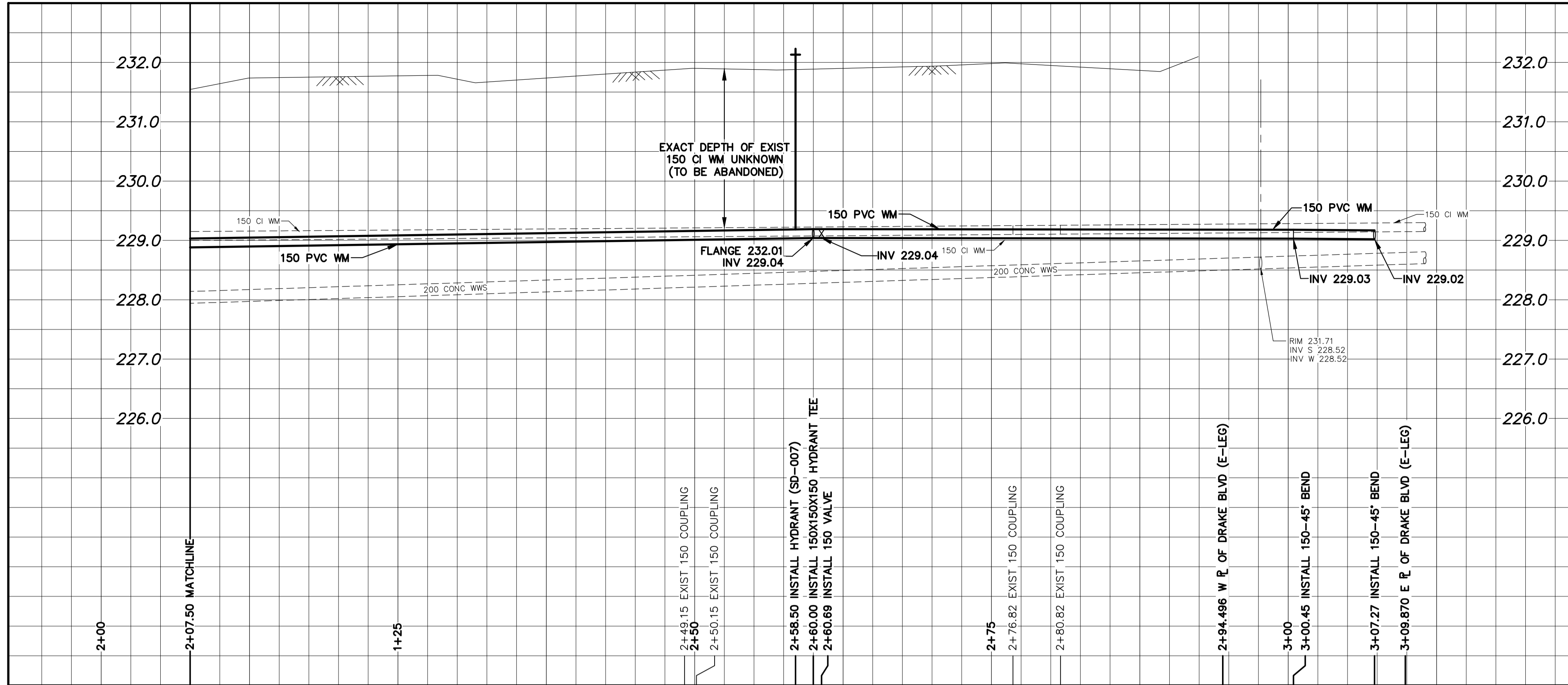


WATER SERVICE INFORMATION

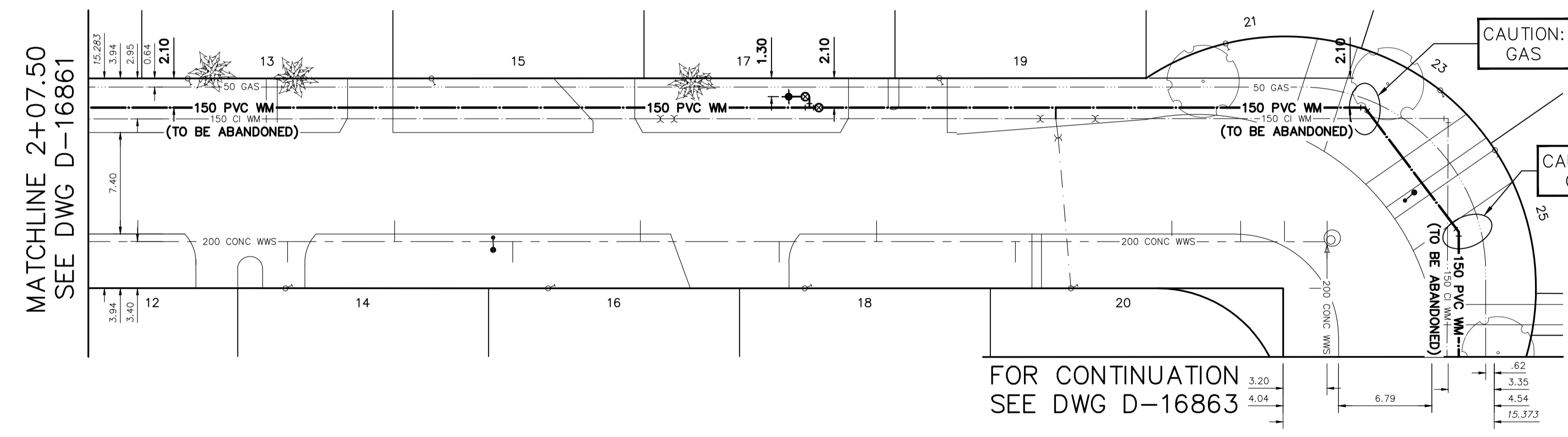
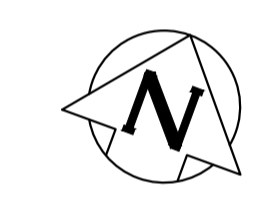
ADDRESS	SIZE (mm) MATERIAL (STREET)	SIZE (mm) MATERIAL (PROP.)	SHORT & LONG MEASUREMENT	LINEAR DISTANCE CORP LOCATION	REMARKS
13 BURNING BUSH BAY	20	20	-- EWL HSE	--	RECONNECT SERVICE
RESIDENTIAL	CU	CU	--- EEL DRAKE BLVD	--	RECONNECT SERVICE
14 BURNING BUSH BAY	20	20	-- WWL HSE	--	RECONNECT SERVICE
RESIDENTIAL	CU	CU	--- EEL DRAKE BLVD	--	RECONNECT SERVICE
15 BURNING BUSH BAY	20	20	-- EWL HSE	--	RECONNECT SERVICE
RESIDENTIAL	CU	CU	--- EEL DRAKE BLVD	--	RECONNECT SERVICE
16 BURNING BUSH BAY	20	20	-- EWL HSE	--	RECONNECT SERVICE
RESIDENTIAL	CU	CU	--- EEL DRAKE BLVD	--	RECONNECT SERVICE
17 BURNING BUSH BAY	20	20	-- EWL HSE	--	RECONNECT SERVICE
RESIDENTIAL	CU	CU	--- EEL DRAKE BLVD	--	RECONNECT SERVICE
18 BURNING BUSH BAY	20	20	-- EWL HSE	--	RECONNECT SERVICE
RESIDENTIAL	CU	CU	--- EEL DRAKE BLVD	--	RECONNECT SERVICE
19 BURNING BUSH BAY	20	20	-- EWL HSE	--	RECONNECT SERVICE
RESIDENTIAL	CU	CU	--- EEL DRAKE BLVD	--	RECONNECT SERVICE
20 BURNING BUSH BAY	20	20	2.04 EWL HSE	1.1 S OF S/C	RECONNECT SERVICE
RESIDENTIAL	CU	CU	177.676 EEL DRAKE BLVD	--	RECONNECT SERVICE
21 BURNING BUSH BAY	20	20	-- WWL HSE	--	RECONNECT SERVICE
RESIDENTIAL	CU	CU	--- EEL DRAKE BLVD	--	RECONNECT SERVICE
23 BURNING BUSH BAY	20	20	5.00 EWL HSE	--	RECONNECT SERVICE
RESIDENTIAL	CU	CU	0.887 SNL BURNING BUSH BAY (N-LEG)	--	RECONNECT SERVICE
25 BURNING BUSH BAY	20	20	-- SNL HSE	--	RECONNECT SERVICE
RESIDENTIAL	CU	CU	--- SSL BURNING BUSH BAY (N-LEG)	--	RECONNECT SERVICE

* SERVICES TO BE RENEWED TO R. ALL OTHERS TO BE RECONNECTED



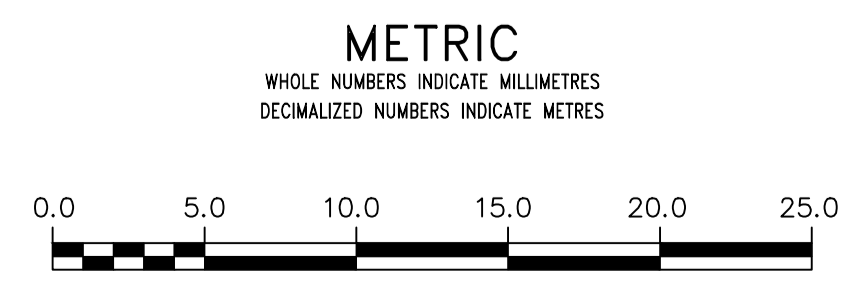
NOTE: CHAINAGES SHOWN ARE ALONG N R OF BURNING BUSH BAY

BURNING BUSH BAY (N-LEG)



FOR INDEX SEE D-16858

NOTE: ALL VALVES TO BE INSTALLED CLOCKWISE TO CLOSE



WARNING
IF POWER EQUIPMENT OR EXPLOSIVES ARE TO BE USED FOR EXCAVATION ON THIS PROJECT THE CONTRACTOR MUST:
1) NOTIFY THE GAS COMPANY OF THE PROPOSED LOCATION OF EXCAVATION.
2) TAKE PRECAUTION TO AVOID DAMAGE TO GAS COMPANY INSTALLATIONS.
SEE PROVINCIAL REGULATION 210/72 FOR DETAILS

LOCATION APPROVED UNDERGROUND STRUCTURES
SUPV. U/G STRUCTURES COMMITTEE DATE
NOTE:
LOCATION OF UNDERGROUND STRUCTURES AS SHOWN ARE BASED ON THE BEST INFORMATION AVAILABLE BUT NO GUARANTEE IS GIVEN THAT ALL EXISTING UTILITIES ARE SHOWN OR THAT THE GIVEN LOCATIONS ARE EXACT. CONFIRMATION OF EXISTENCE AND EXACT LOCATION OF ALL SERVICES MUST BE OBTAINED FROM THE INDIVIDUAL UTILITIES BEFORE PROCEEDING WITH CONSTRUCTION.

VERTICAL DATUM: CGVD28 (HT2.0 Geoid)
HORIZONTAL DATUM: NAD83 (June 1990), Zone 14

NO.	REVISIONS	DATE	BY

DESIGNED BY: RG	CHECKED BY: SC
DRAWN BY: AOM/AJ	APPROVED BY: SC
SCALE: HORIZONTAL: 1:250 VERTICAL: 1:50	RELEASED FOR CONSTRUCTION
DATE: 2024 04 15	DATE:
PLOT DATE: 2024 04 15	

ENGINEER'S SEAL
PROVINCE OF MANITOBA
S.R.J. COURNOYER
Member
22699
2024-04-24
REGISTERED PROFESSIONAL ENGINEER
Digitally signed by Stacy Cournoyer, P. Eng.
CONSULTANT DRAWING NUMBER:

THE CITY OF WINNIPEG
WATER AND WASTE DEPARTMENT
ENGINEERING DIVISION
2024 WATER MAIN RENEWALS
CONTRACT 3
BURNING BUSH BAY (N-LEG)
107.5M E OF DRAKE BOULEVARD TO
BURNING BUSH BAY (E-LEG)

SHEET 6 OF 12
CITY DRAWING NUMBER
D-16862