

WATER SERVICE INFORMATION					
ADDRESS	SIZE (mm) MATERIAL (STREET)	SIZE (mm) MATERIAL (PROP.)	SHORT & LONG MEASUREMENT	LINEAR DISTANCE CORP LOCATION	REMARKS
33 BURNING BUSH BAY RESIDENTIAL	20 CU	20 CU	4.00 NSL HSE	4.3	RENEW TO 150 W/20 CU
35 BURNING BUSH BAY RESIDENTIAL	20 CU	20 CU	7.000 NSL BURNING BUSH BAY (S-LEG)	2.8 N OF S/C	RENEW TO 150 W/20 CU
37 BURNING BUSH BAY RESIDENTIAL	20 CU	20 CU	194.223 EEL DRAKE BLVD	5.4 N OF S/C	RECONNECT SERVICE
38 BURNING BUSH BAY RESIDENTIAL	20 CU	20 CU	12.32 WEL HSE	3.6 W OF S/C	OUTSIDE WORK AREA
39 BURNING BUSH BAY RESIDENTIAL	20 CU	20 CU	173.296 EEL DRAKE BLVD	1.4 W OF S/C	OUTSIDE WORK AREA
40 BURNING BUSH BAY RESIDENTIAL	20 CU	20 CU	0.37 EWL HSE	0.9 E OF S/C	RECONNECT SERVICE
41 BURNING BUSH BAY RESIDENTIAL	20 CU	20 CU	170.263 EEL DRAKE BLVD	1.7 W OF S/C	OUTSIDE WORK AREA
42 BURNING BUSH BAY RESIDENTIAL	20 CU	20 CU	158.376 EEL DRAKE BLVD	2.3 W OF S/C	OUTSIDE WORK AREA
43 BURNING BUSH BAY RESIDENTIAL	20 CU	20 CU	1.00 WML HSE	0.57 WML HSE	RECONNECT SERVICE
44 BURNING BUSH BAY RESIDENTIAL	20 CU	20 CU	151.678 EEL DRAKE BLVD	1.2 W OF S/C	OUTSIDE WORK AREA
45 BURNING BUSH BAY RESIDENTIAL	20 CU	20 CU	5.36 EWL HSE	109.348 EEL DRAKE BLVD	RECONNECT SERVICE

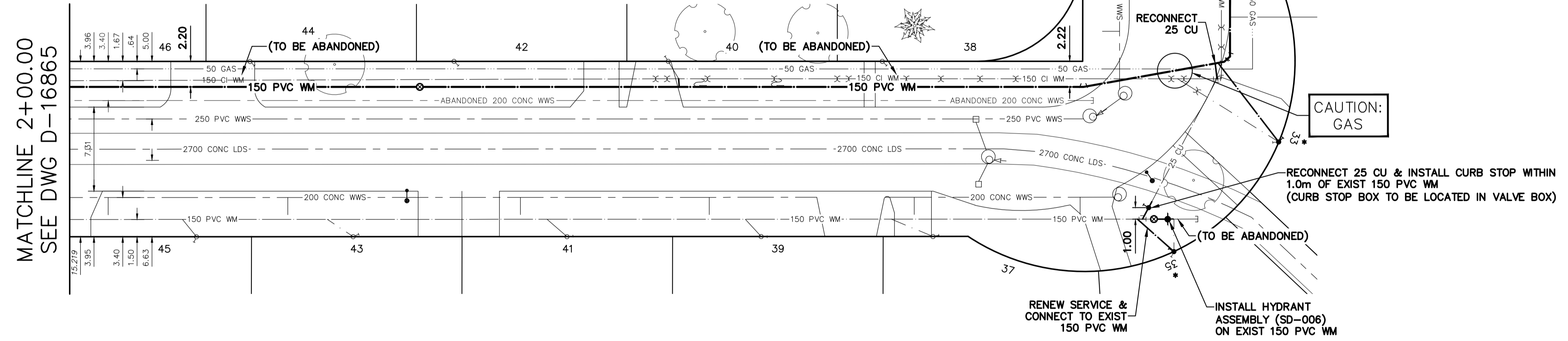
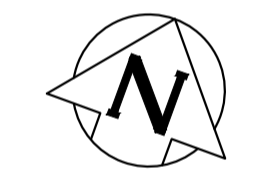
* SERVICES TO BE RENEWED TO 150. ALL OTHERS TO BE RECONNECTED

- 2+00.00 MATCHLINE
- 2+25
- 2+30.10 INSTALL 150 VALVE
- 2+50.90 EXIST 150 COUPLING
- 2+51.90 EXIST 150 COUPLING
- 2+55.40 EXIST 150 COUPLING
- 2+61.20 EXIST 150 COUPLING
- 2+66.67 EXIST 150 COUPLING
- 2+67.67 EXIST 150 COUPLING
- 2+72.67 EXIST 150 COUPLING
- 2+75.67 EXIST 150 COUPLING
- 2+79.07 EXIST 150 COUPLING
- 2+82.17 EXIST 150 COUPLING
- 2+87.884 W R OF DRAKE BLVD (E-LEG)
- 2+88.05 INSTALL 150-22' BEND
- 2+93.55 INSTALL 150-90' BEND
- 2+95.05 INSTALL HYDRANT (SD-006)
- 2+95.65 EXIST 150 COUPLING
- 2+96.75 EXIST 150 COUPLING
- 2+99.52 EXIST 150 COUPLING
- 2+99.65 EXIST 150X150X150 TEE
- 3+00
- 3+00.02 EXIST 150-90' BEND
- 3+00.27 INSTALL 150-22' BEND
- 3+00.48 INSTALL 150-22' BEND
- 3+03.358 E R OF DRAKE BLVD (E-LEG)

NOTE: CHAINAGES SHOWN ARE ALONG N R OF BURNING BUSH BAY

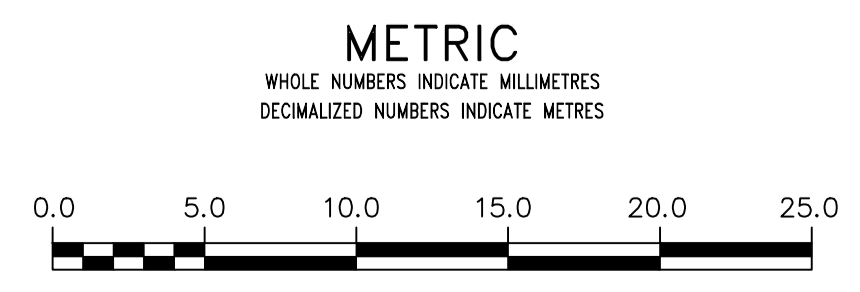
BURNING BUSH BAY (S-LEG)

FOR CONTINUATION SEE DWG D-16863



FOR INDEX SEE D-16858

NOTE: ALL VALVES TO BE INSTALLED CLOCKWISE TO CLOSE

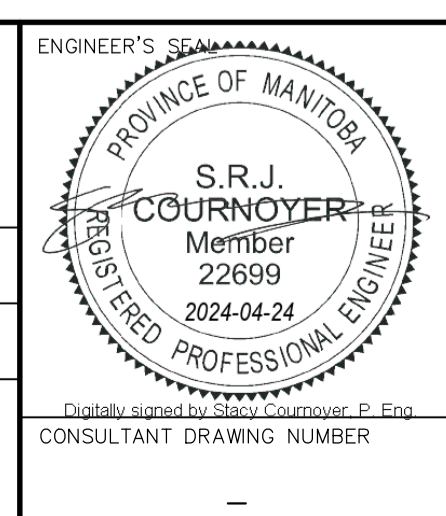


WARNING
IF POWER EQUIPMENT OR EXPLOSIVES ARE TO BE USED FOR EXCAVATION ON THIS PROJECT THE CONTRACTOR MUST:
1) NOTIFY THE GAS COMPANY OF THE PROPOSED LOCATION OF EXCAVATION.
2) TAKE PRECAUTION TO AVOID DAMAGE TO GAS COMPANY INSTALLATIONS.
SEE PROVINCIAL REGULATION 210/72 FOR DETAILS

LOCATION APPROVED
UNDERGROUND STRUCTURES
SUPV. U/G STRUCTURES COMMITTEE DATE
NOTE:
LOCATION OF UNDERGROUND STRUCTURES AS SHOWN ARE BASED ON THE BEST INFORMATION AVAILABLE BUT NO GUARANTEE IS GIVEN THAT ALL EXISTING UTILITIES ARE SHOWN OR THAT THE GIVEN LOCATIONS ARE EXACT. CONFIRMATION OF EXISTENCE AND EXACT LOCATION OF ALL SERVICES MUST BE OBTAINED FROM THE INDIVIDUAL UTILITIES BEFORE PROCEEDING WITH CONSTRUCTION.

VERTICAL DATUM: CGVD28 (HT2.0 Geoid)			
HORIZONTAL DATUM: NAD83 (June 1990), Zone 14			
NO.	REVISIONS DONE BY R.G. COMMENTS	DATE	BY
0		2024/03/12	AJ

DESIGNED BY	RG	CHECKED BY	SC
DRAWN BY	AOM/AJ	APPROVED BY	SC
SCALE:		RELEASED FOR CONSTRUCTION	
HORIZONTAL	1:250		
VERTICAL	1:50		
DATE	2024 04 16	DATE	
PLOT DATE:	2024 04 16		



THE CITY OF WINNIPEG
WATER AND WASTE DEPARTMENT
ENGINEERING DIVISION

2024 WATER MAIN RENEWALS
CONTRACT 3
BURNING BUSH BAY (S-LEG)
100M E OF DRAKE BOULEVARD TO
BURNING BUSH BAY (E-LEG)

SHEET 8 OF 12
CITY DRAWING NUMBER
D-16864

FILE PATH: R:\DRAWINGS\WATER\RENEWAL\2024 RENEWALS\Cont 3\Construction Dwg\ BURNING BUSH BAY.dwg