

**WATER SERVICE INFORMATION**

ADDRESS	SIZE (mm) MATERIAL (STREET)	SIZE (mm) MATERIAL (PROP.)	SHORT & LONG MEASUREMENT	LINEAR DISTANCE CORP LOCATION	REMARKS
46 BURNING BUSH BAY	20	20	2.08 WWL HSE	-	RECONNECT SERVICE
RESIDENTIAL	CU	CU	96.595 EEL DRAKE BLVD	-	RECONNECT SERVICE
47 BURNING BUSH BAY	20	20	3.58 EWL HSE	-	RECONNECT SERVICE
RESIDENTIAL	CU	CU	84.569 EEL DRAKE BLVD	-	RECONNECT SERVICE
48 BURNING BUSH BAY	20	20	1.04 EWL HSE	-	RECONNECT SERVICE
RESIDENTIAL	CU	CU	77.891 EEL DRAKE BLVD	-	RECONNECT SERVICE
49 BURNING BUSH BAY	20	20	2.77 EWL HSE	-	RECONNECT SERVICE
RESIDENTIAL	CU	CU	63.939 EEL DRAKE BLVD	-	RECONNECT SERVICE
50 BURNING BUSH BAY	20	20	0.66 EWL HSE	-	RECONNECT SERVICE
RESIDENTIAL	CU	CU	61.209 EEL DRAKE BLVD	-	RECONNECT SERVICE
51 BURNING BUSH BAY	20	20	-- EWL HSE	-	RECONNECT SERVICE
RESIDENTIAL	CU	CU	-- EEL DRAKE BLVD	-	RECONNECT SERVICE
52 BURNING BUSH BAY	20	20	-- EWL HSE	-	RECONNECT SERVICE
RESIDENTIAL	CU	CU	-- EEL DRAKE BLVD	-	RECONNECT SERVICE
53 BURNING BUSH BAY	20	20	-- WEL HSE	-	RECONNECT SERVICE
RESIDENTIAL	CU	CU	-- EEL DRAKE BLVD	-	RECONNECT SERVICE
54 BURNING BUSH BAY	20	20	-- WEL HSE	-	RECONNECT SERVICE
RESIDENTIAL	CU	CU	-- EEL DRAKE BLVD	-	RECONNECT SERVICE
55 BURNING BUSH BAY	20	20	-- EWL HSE	-	RECONNECT SERVICE
RESIDENTIAL	CU	CU	-- EEL DRAKE BLVD	-	RECONNECT SERVICE
56 BURNING BUSH BAY	20	20	-- WWL HSE	-	RECONNECT SERVICE
RESIDENTIAL	CU	CU	-- EEL DRAKE BLVD	-	RECONNECT SERVICE

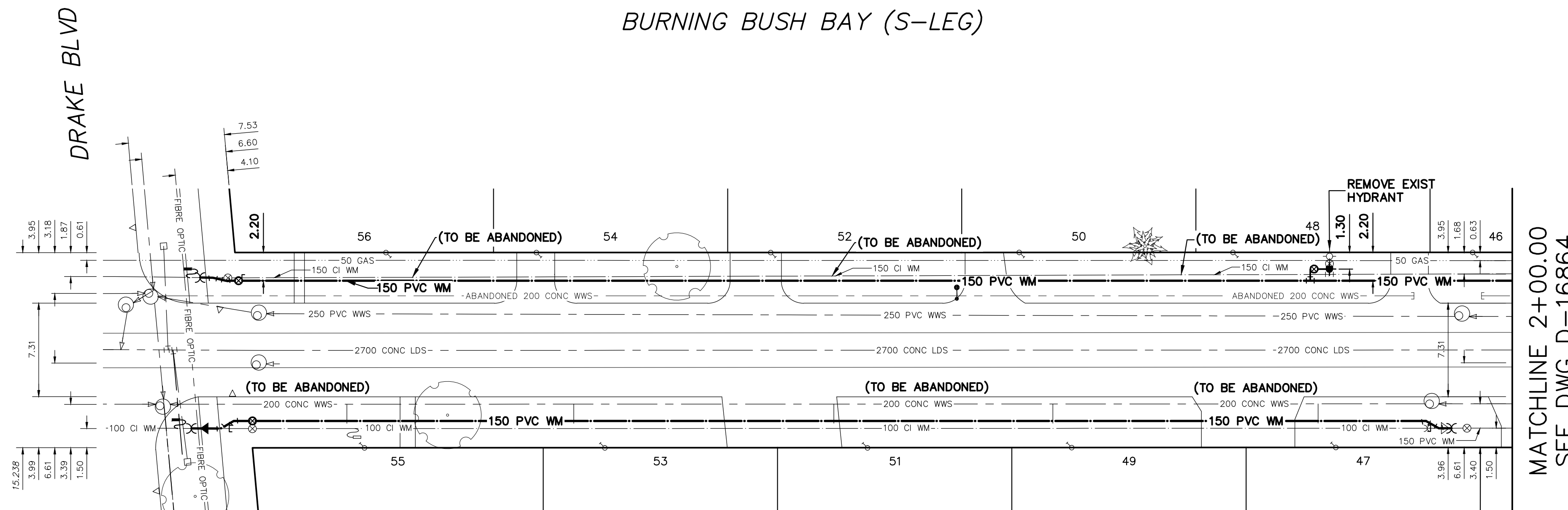
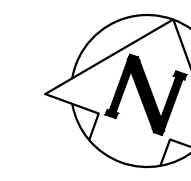
\* SERVICES TO BE RENEWED TO R. ALL OTHERS TO BE RECONNECTED

0+96.60 CONNECT TO EXIST 100 CI S.WM W/COUPLING  
 0+96.60 CONNECT TO EXIST 150 CI N.WM W/COUPLING  
 0+97.60 INSTALL 150-100 REDUCER (S.WM)  
 0+98.28 INSTALL 150-22' BEND (N.WM)  
 0+98.30 INSTALL 150-45' BEND (S.WM)  
 0+98.92 INSTALL 150-22' BEND (N.WM)  
 0+98.90 INSTALL 150-45' BEND (S.WM)  
 1+00.000 E.P. OF DRAKE BLVD  
 1+00.28 INSTALL 150 VALVE (N.WM)  
 1+01.40 INSTALL 150 VALVE (S.WM)

1+83.92 INSTALL 150X150X150 HYDRANT TEE  
 1+85.42 INSTALL HYDRANT ASSEMBLY (SD-006)  
 1+85.42 REMOVE EXIST 150X150X150 TEE & EXIST HYDRANT ASSEMBLY  
 1+92.95 INSTALL 150-45' BEND  
 1+93.06 EXIST 100 COUPLING  
 1+93.92 INSTALL 150-45' BEND  
 1+94.50 INSTALL 150X150X150 TEE  
 1+94.95 CONNECT TO EXIST 150 PVC WM W/COUPLING  
 1+96.16 EXIST 150 VALVE

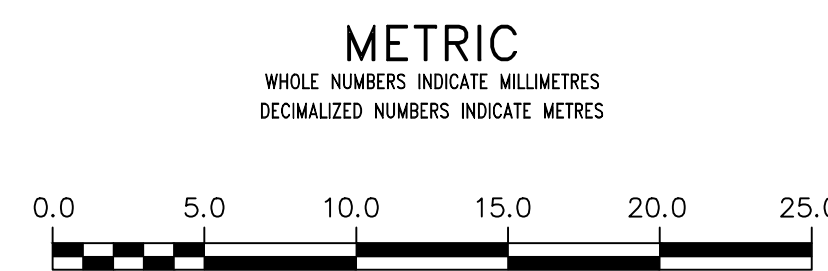
NOTE: CHAINAGES SHOWN ARE ALONG N.P. OF BURNING BUSH BAY

**BURNING BUSH BAY (S-LEG)**



FOR INDEX SEE D-16858

NOTE: ALL VALVES TO BE INSTALLED CLOCKWISE TO CLOSE



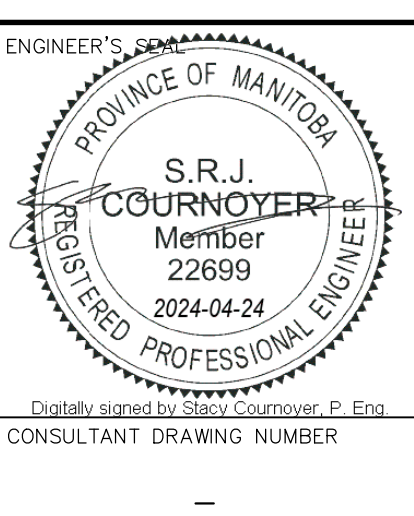
**WARNING**  
 IF POWER EQUIPMENT OR EXPLOSIVES ARE TO BE USED FOR EXCAVATION ON THIS PROJECT THE CONTRACTOR MUST:  
 1) NOTIFY THE GAS COMPANY OF THE PROPOSED LOCATION OF EXCAVATION.  
 2) TAKE PRECAUTION TO AVOID DAMAGE TO GAS COMPANY INSTALLATIONS.  
 SEE PROVINCIAL REGULATION 210/72 FOR DETAILS

**LOCATION APPROVED UNDERGROUND STRUCTURES**  
 SUPV. U/G STRUCTURES COMMITTEE DATE  
 NOTE:  
 LOCATION OF UNDERGROUND STRUCTURES AS SHOWN ARE BASED ON THE BEST INFORMATION AVAILABLE BUT NO GUARANTEE IS GIVEN THAT ALL EXISTING UTILITIES ARE SHOWN OR THAT THE GIVEN LOCATIONS ARE EXACT. CONFIRMATION OF EXISTENCE AND EXACT LOCATION OF ALL SERVICES MUST BE OBTAINED FROM THE INDIVIDUAL UTILITIES BEFORE PROCEEDING WITH CONSTRUCTION.

VERTICAL DATUM: CGVD28 (HT2.0 Geoid)  
 HORIZONTAL DATUM: NAD83 (June 1990), Zone 14

NO.	REVISIONS	DATE	BY

DESIGNED BY	RG	CHECKED BY	SC
DRAWN BY	AOM/AJ	APPROVED BY	SC
SCALE:		RELEASED FOR CONSTRUCTION	
HORIZONTAL	1:250		
VERTICAL	1:50		
DATE	2024 04 15	DATE	
PLOT DATE:	2024 04 15		



**THE CITY OF WINNIPEG**  
 WATER AND WASTE DEPARTMENT  
 ENGINEERING DIVISION

2024 WATER MAIN RENEWALS  
 CONTRACT 3  
**BURNING BUSH BAY (S-LEG)**  
 100M E OF DRAKE BOULEVARD

SHEET 9 OF 12  
 CITY DRAWING NUMBER  
**D-16865**