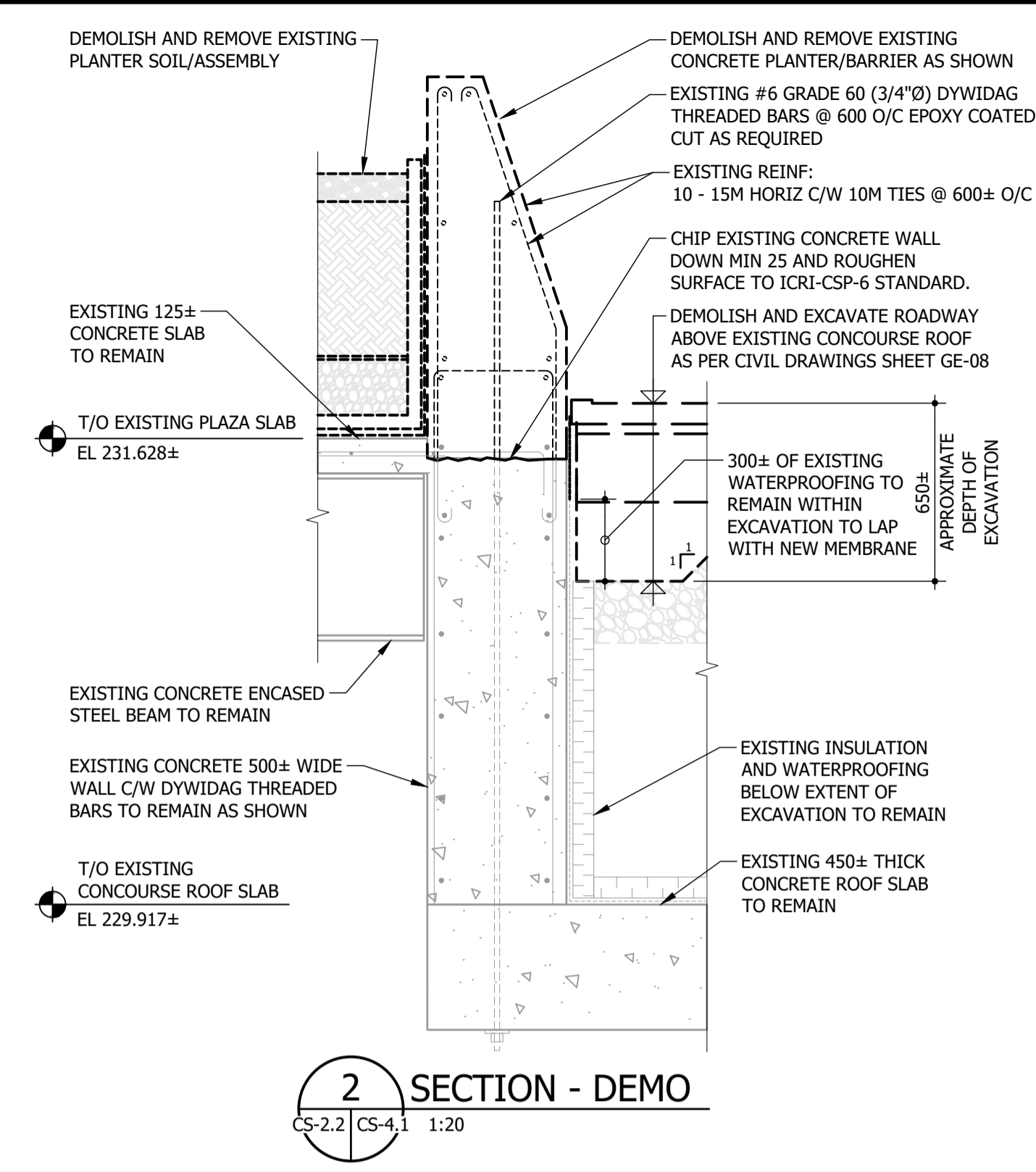
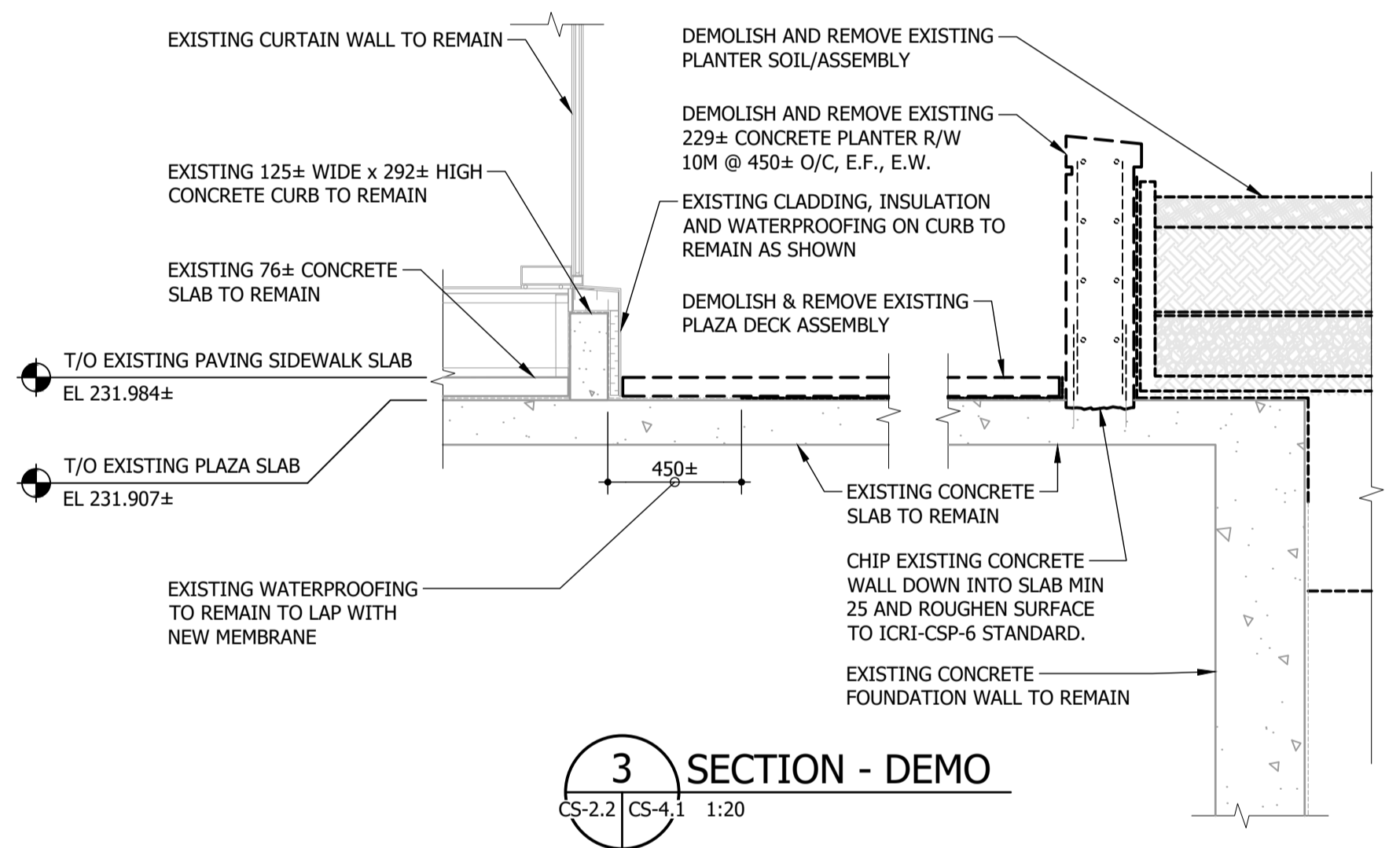


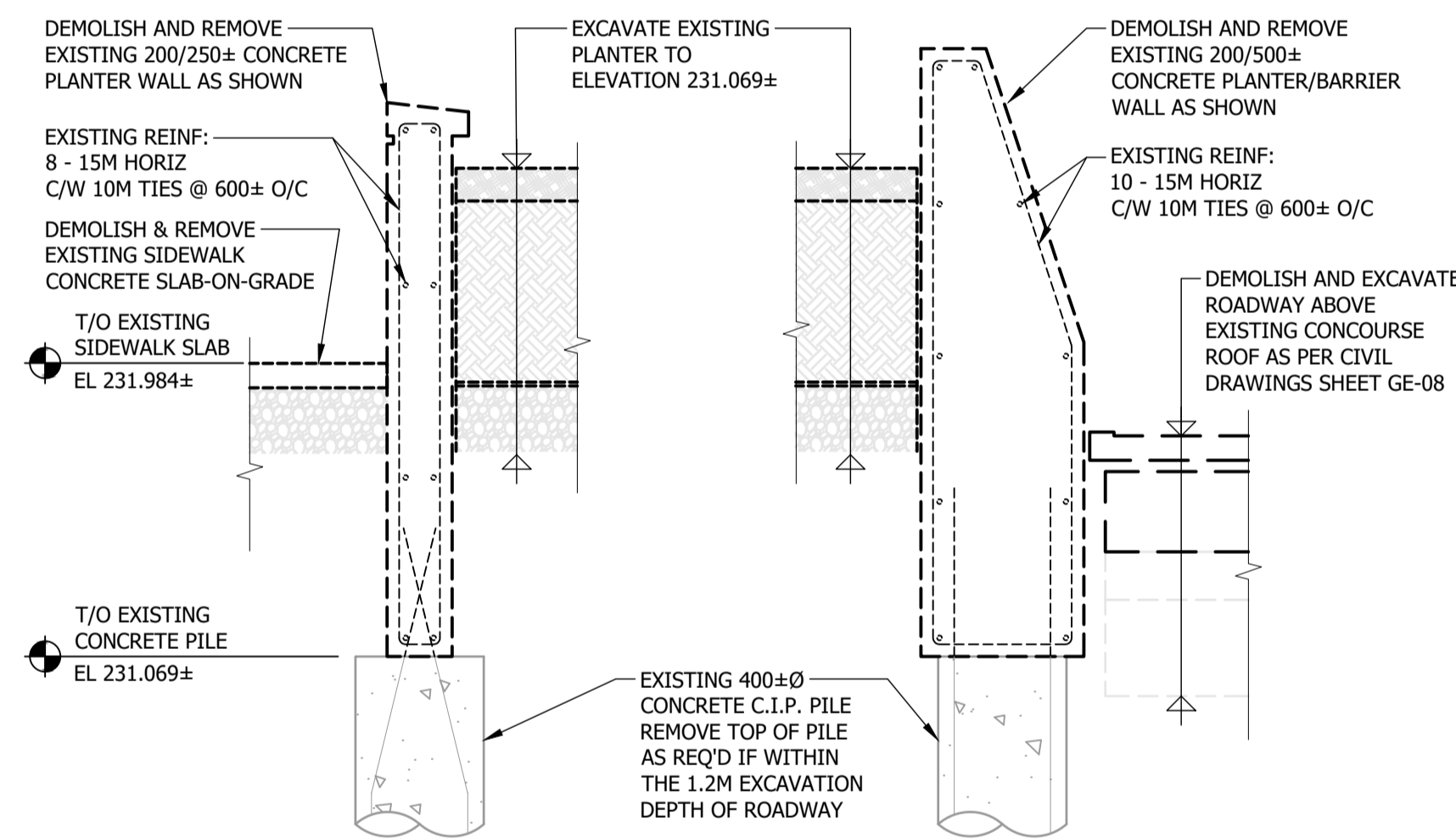
1 SECTION - DEMO
CS-2.2 CS-4.1 1:20



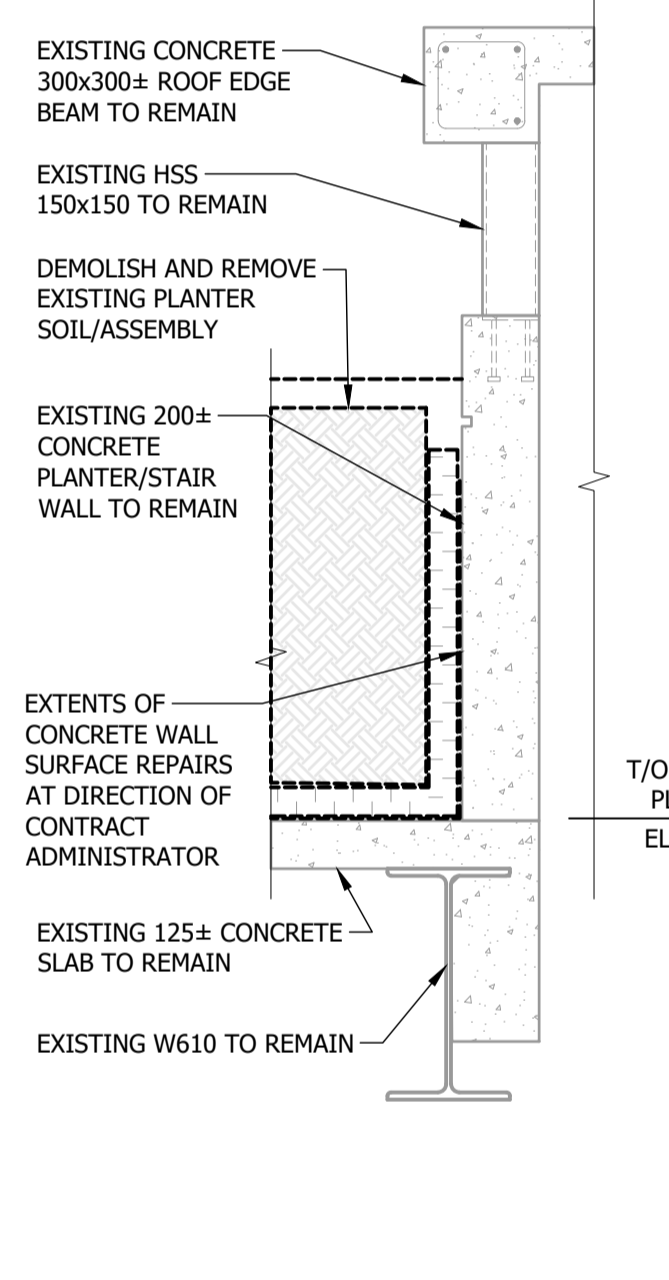
2 SECTION - DEMO
CS-2.2 CS-4.1 1:20



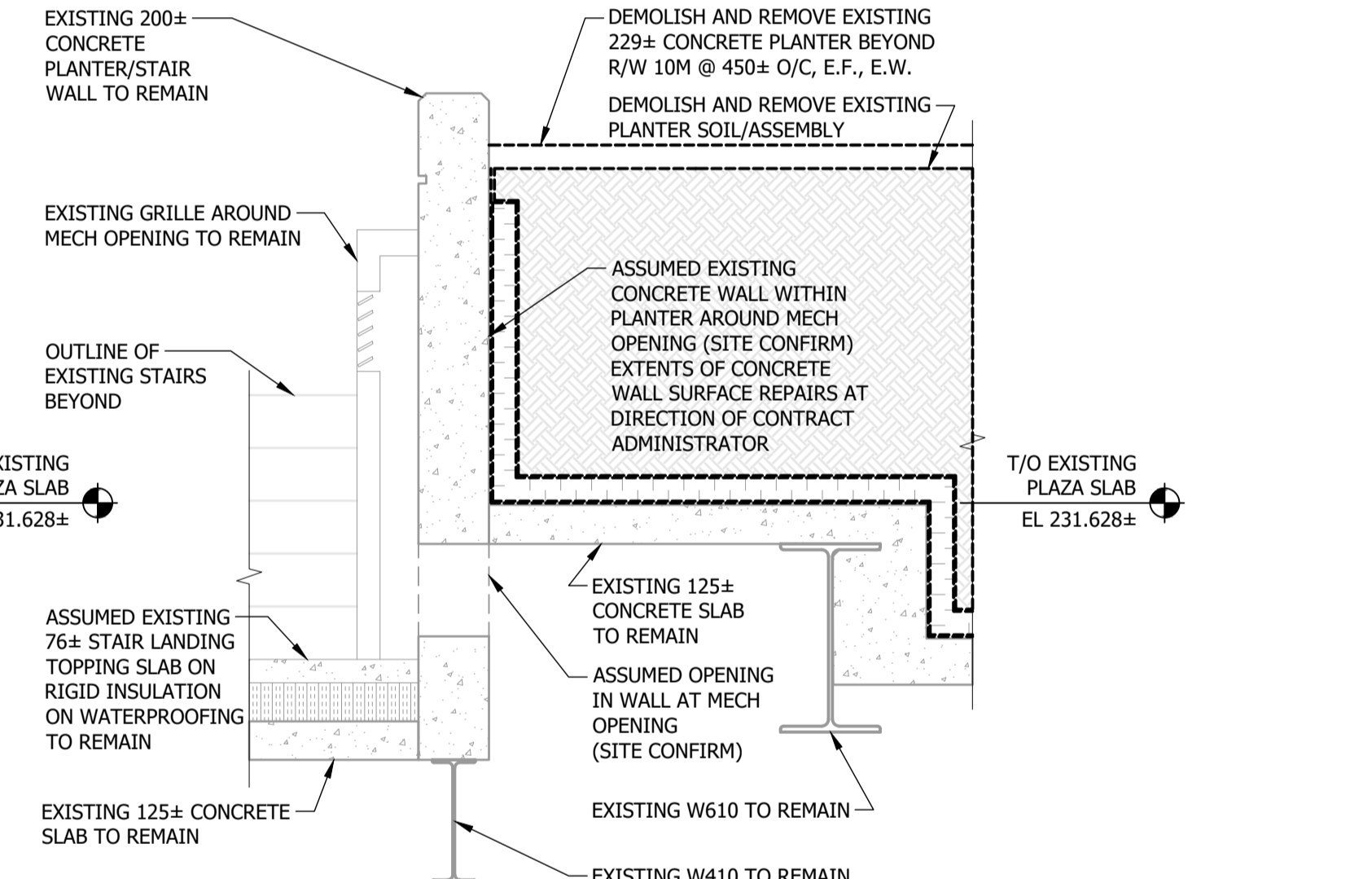
3 SECTION - DEMO
CS-2.2 CS-4.1 1:20



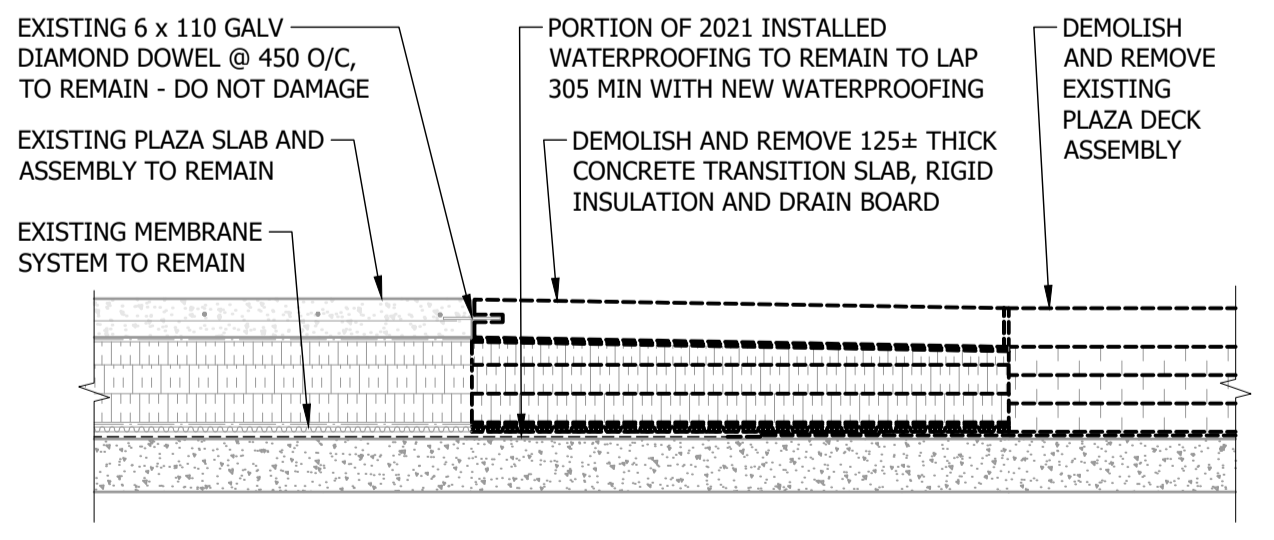
4 SECTION - DEMO
CS-2.2 CS-4.1 1:20



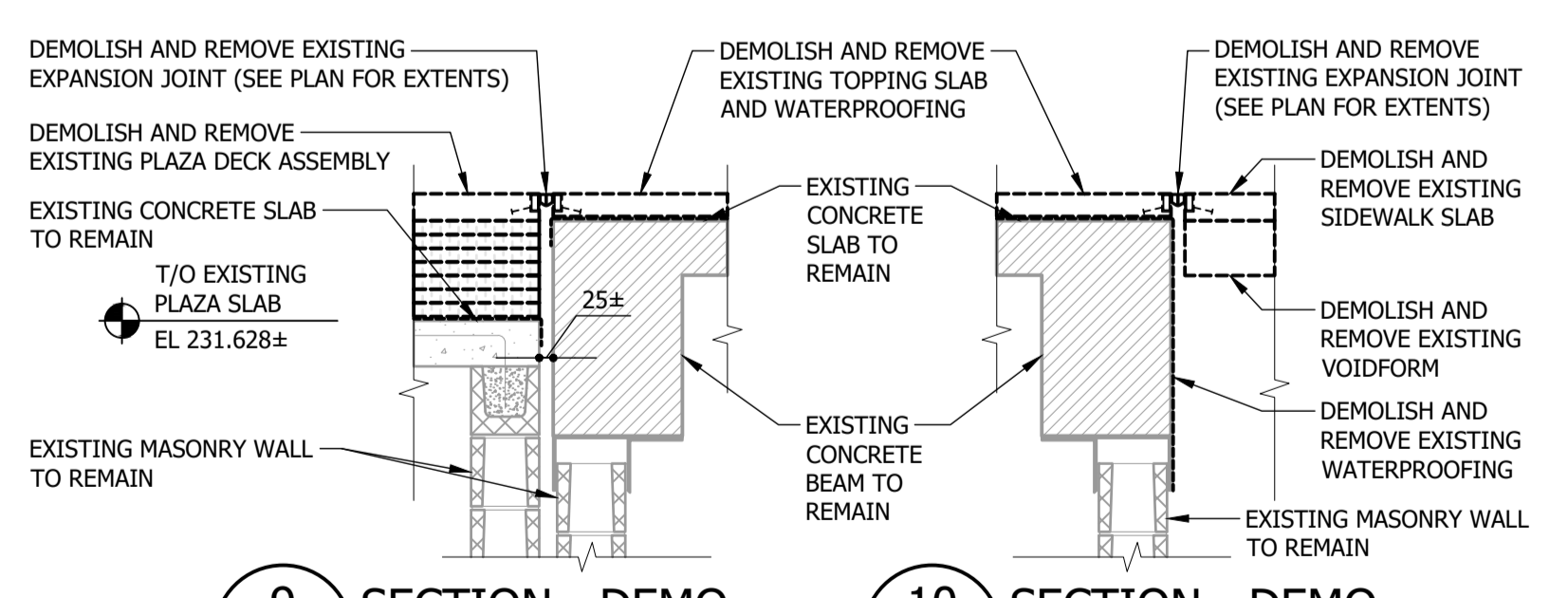
5 SECTION - DEMO
CS-2.2 CS-4.1 1:20



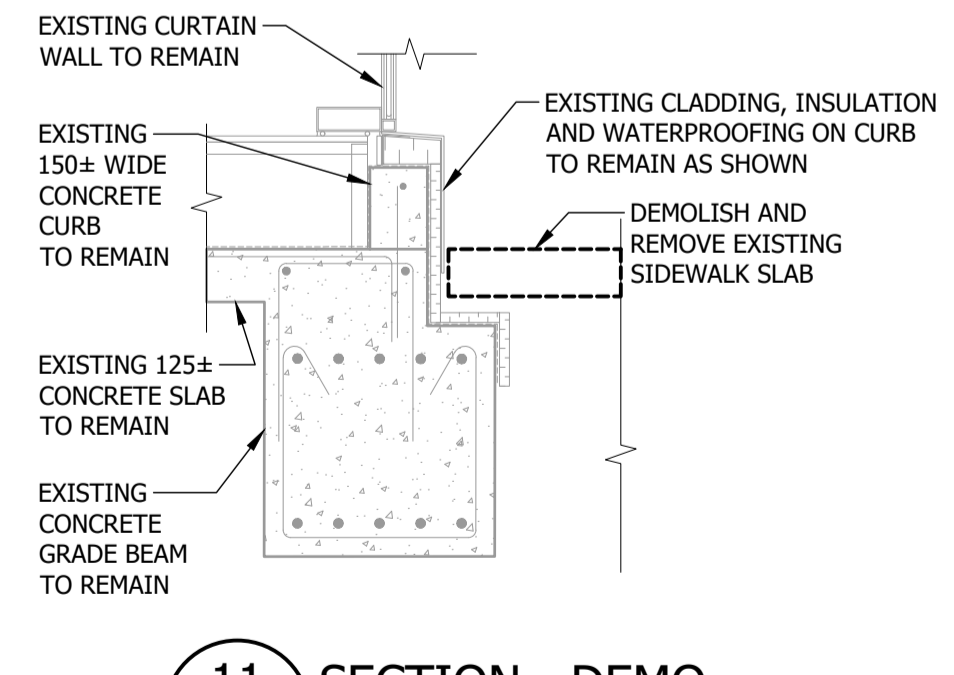
6 SECTION - DEMO
CS-2.2 CS-4.1 1:20



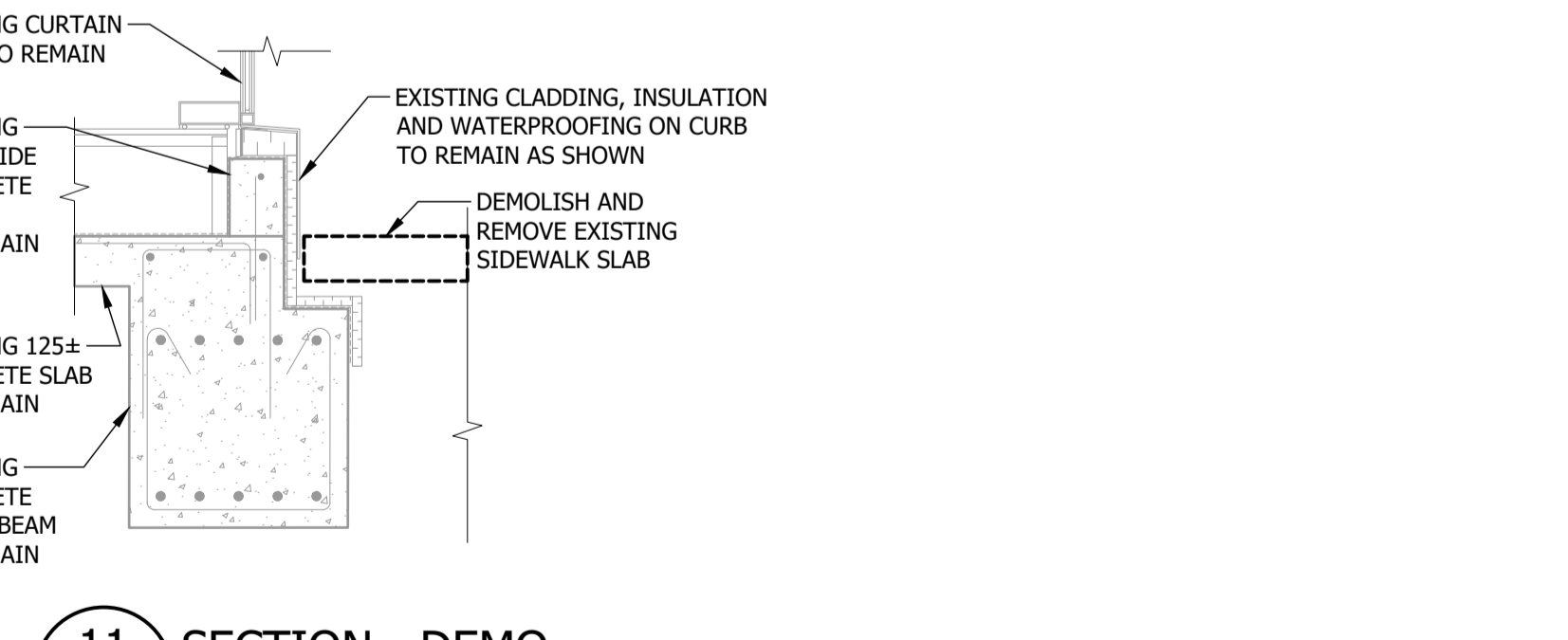
8 TEMPORARY WATERPROOFING TRANSITION SECTION - DEMO
CS-2.2 CS-4.1 1:20



9 SECTION - DEMO
CS-2.2 CS-4.1 1:20



10 SECTION - DEMO
CS-2.2 CS-4.1 1:20



11 SECTION - DEMO
CS-2.2 CS-4.1 1:20

C:\Users\veas\OneDrive - Crosier Kilgour\General - 2024-0410 - Portage & Main Pedestrian Opening\06 Drawings\2024-0410_PORTAGE-MAIN.dwg

B.M. ELEV.		DESIGNED BY	SMC/DJM		ENGINEER'S SEAL		
		DRAWN BY	MS/SAS		PORTAGE & MAIN PEDESTRIAN OPENING NORTHWEST CORNER		
		CHECKED BY	SMC				CITY DRAWING NUMBER
		APPROVED BY	DJM				SHEET OF
1	ADDENDUM 01	24-09-27	SMC	HOR. SCALE		AS NOTED	CONSULTANT PROJECT NUMBER
0	ISSUED FOR TENDER	24-09-09	SMC	VERTICAL	AS NOTED		
NO.	REVISIONS	DATE	BY	DATE	2024-09-27	DATE	

CITY DRAWING NUMBER
SHEET OF
CONSULTANT DRAWING NUMBER