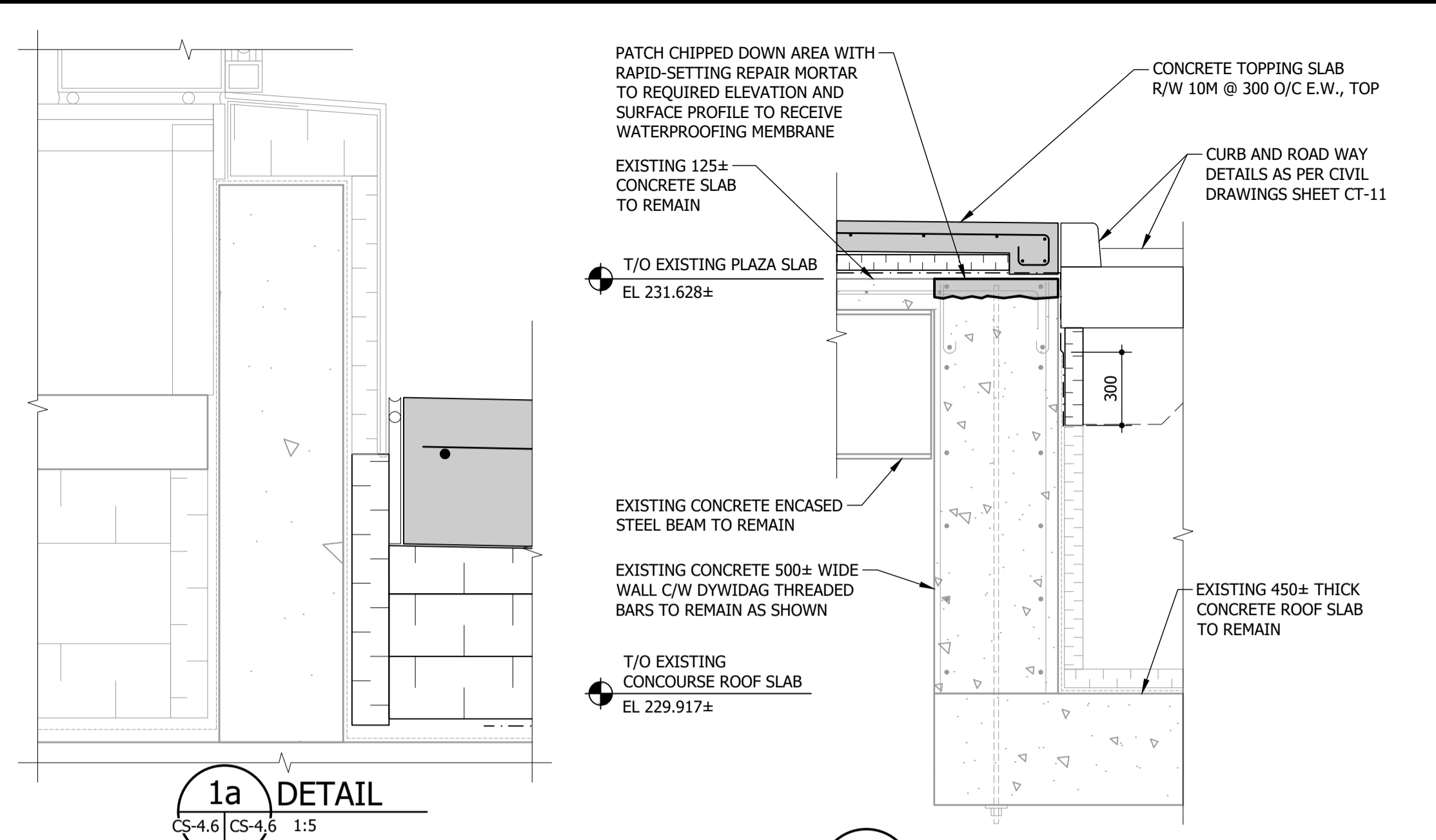


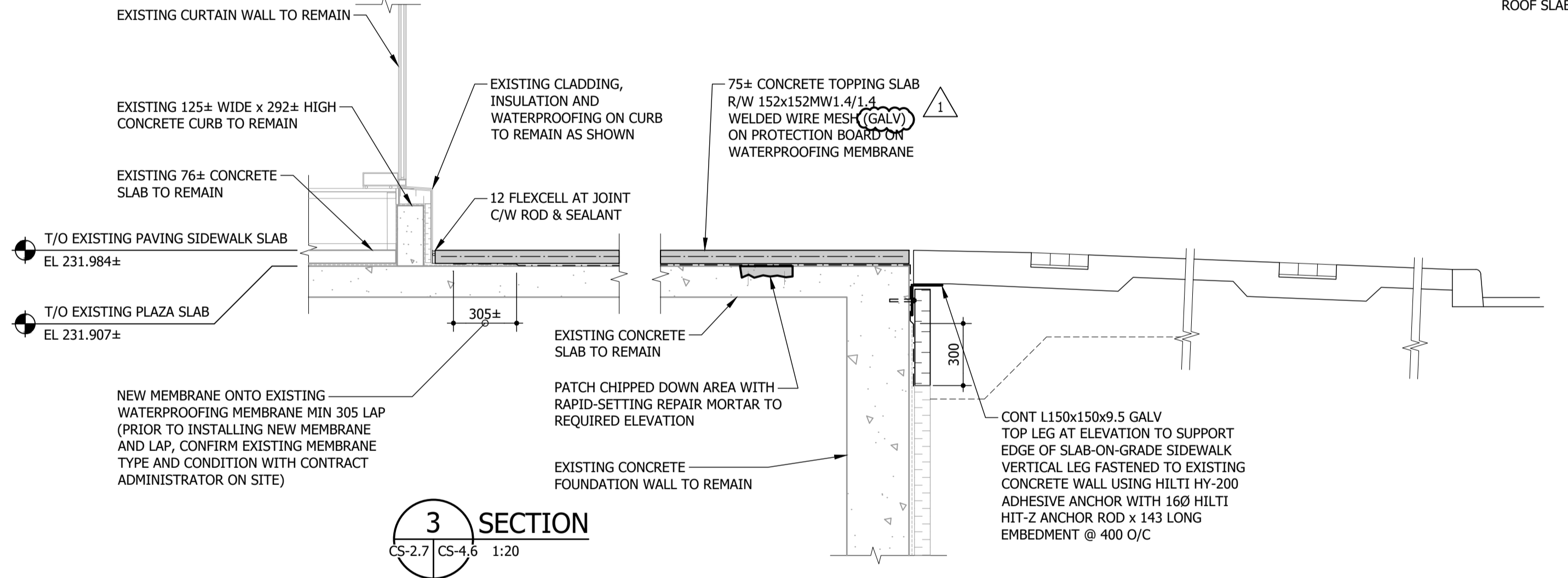
1 SECTION
CS-2.7 CS-4.6 1:20



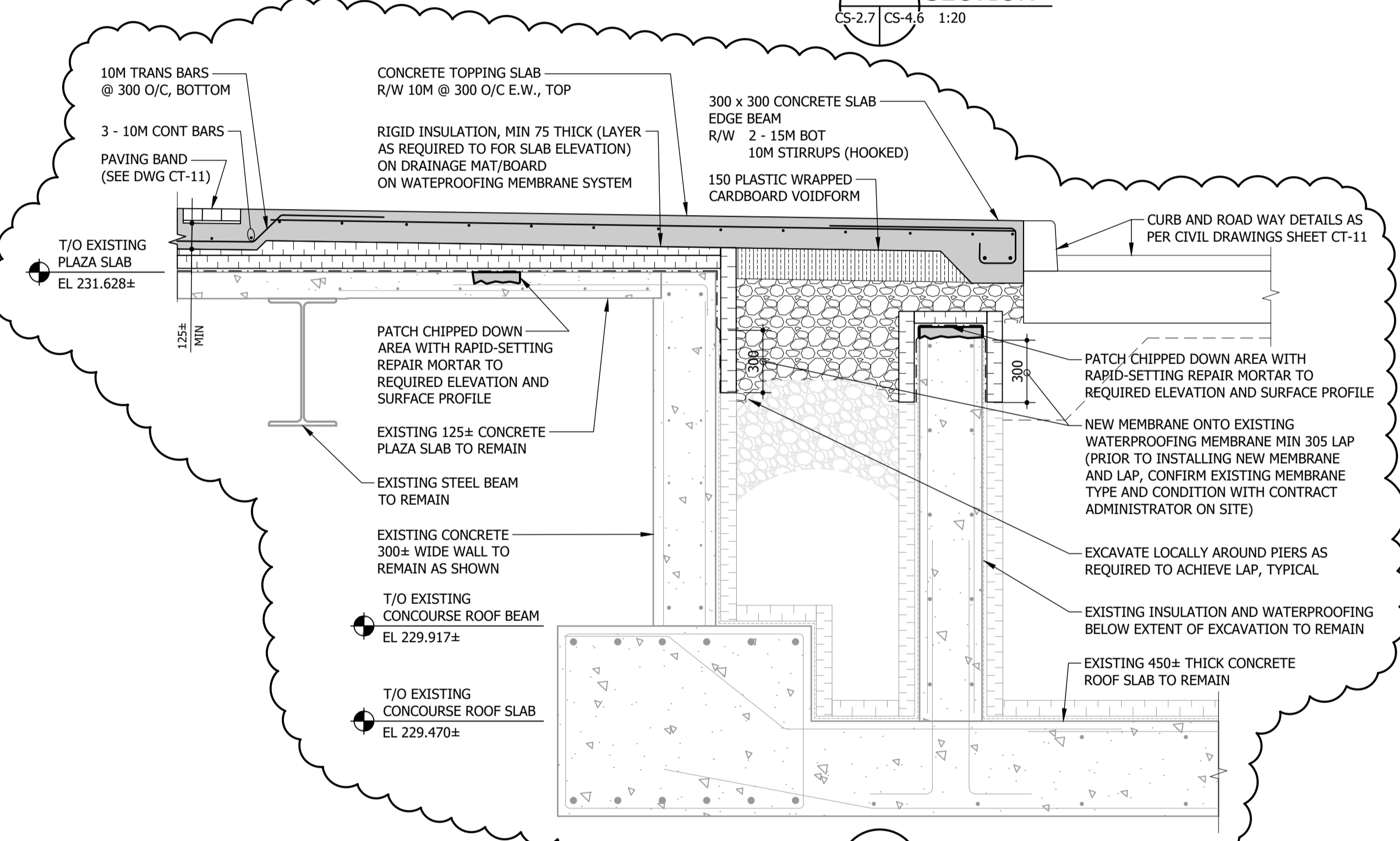
1a DETAIL
CS-4.6 CS-4.6 1:5



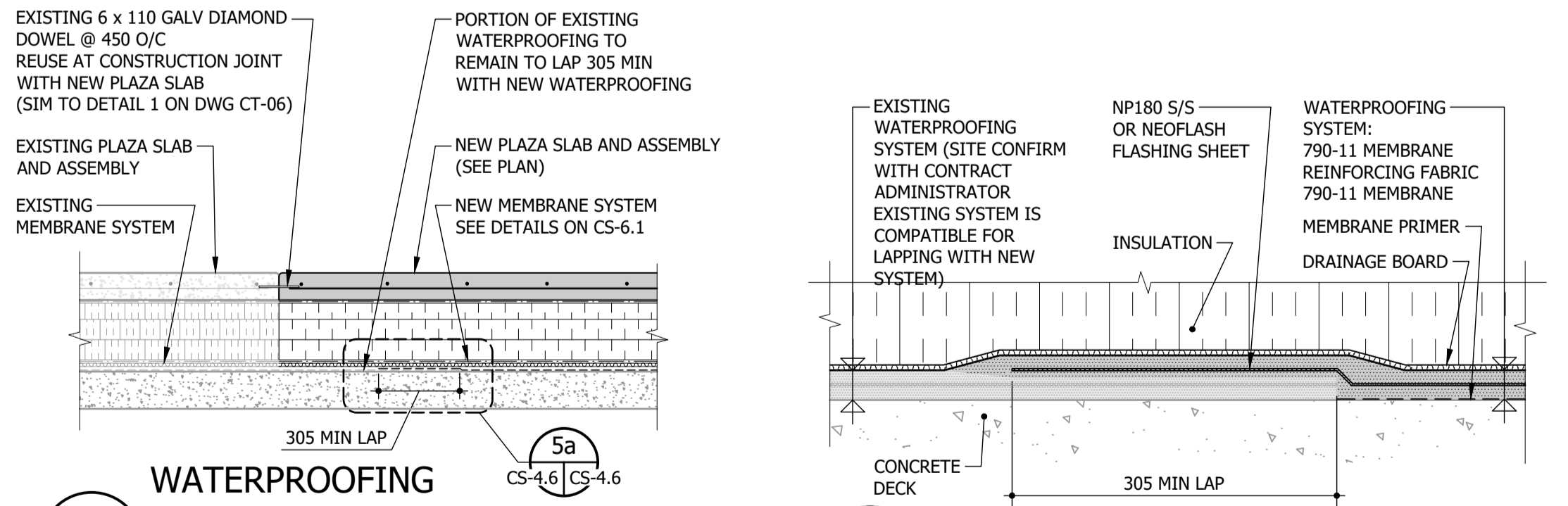
2 SECTION
CS-2.7 CS-4.6 1:20



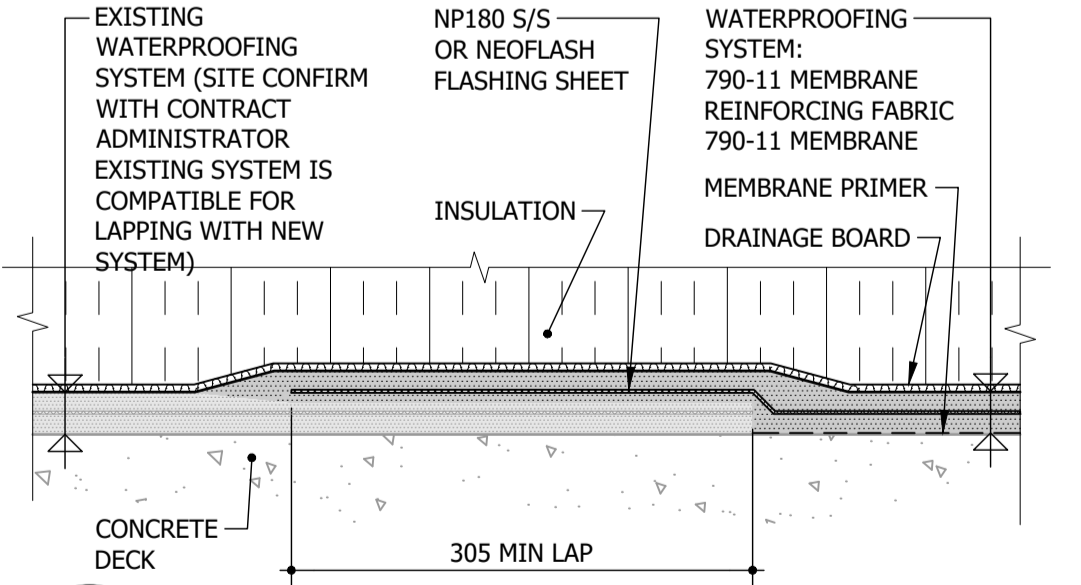
3 SECTION
CS-2.7 CS-4.6 1:20



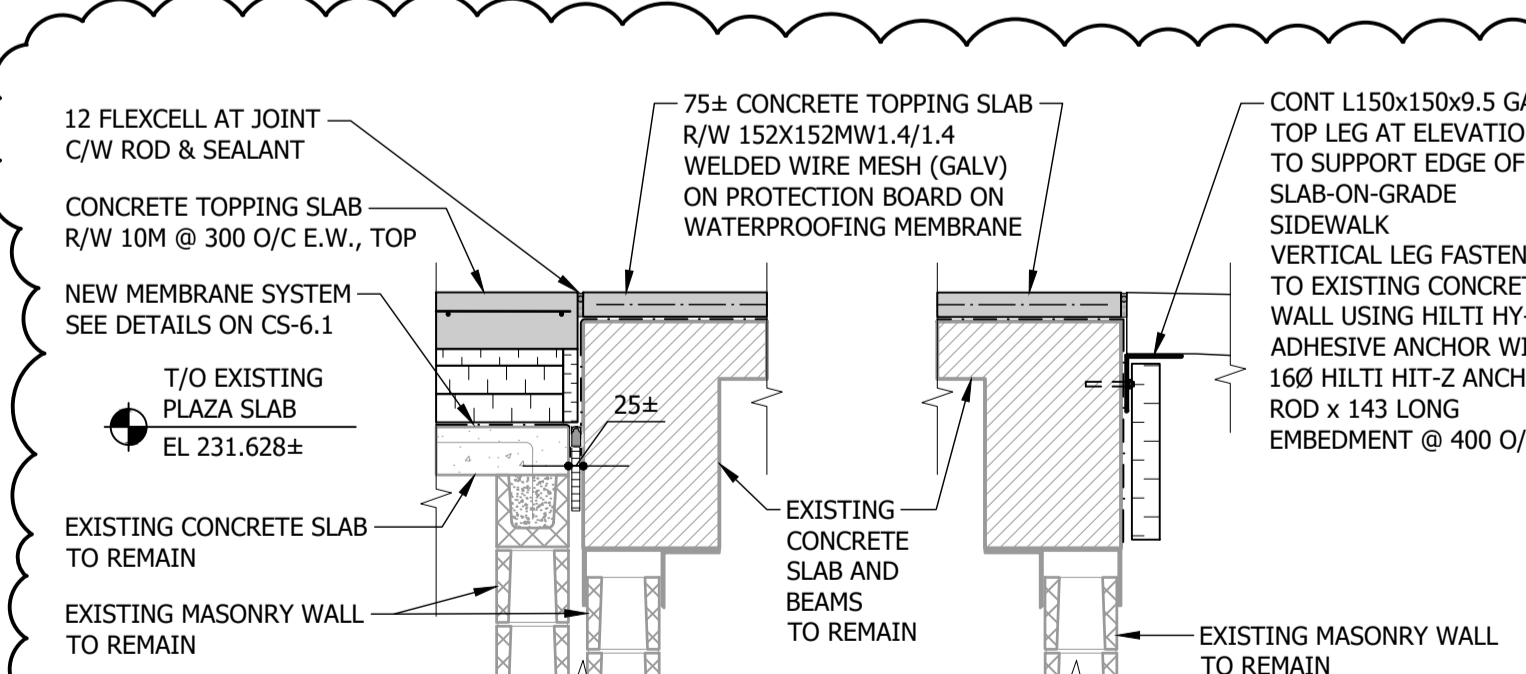
6 SECTION
CS-2.7 CS-4.6 1:20



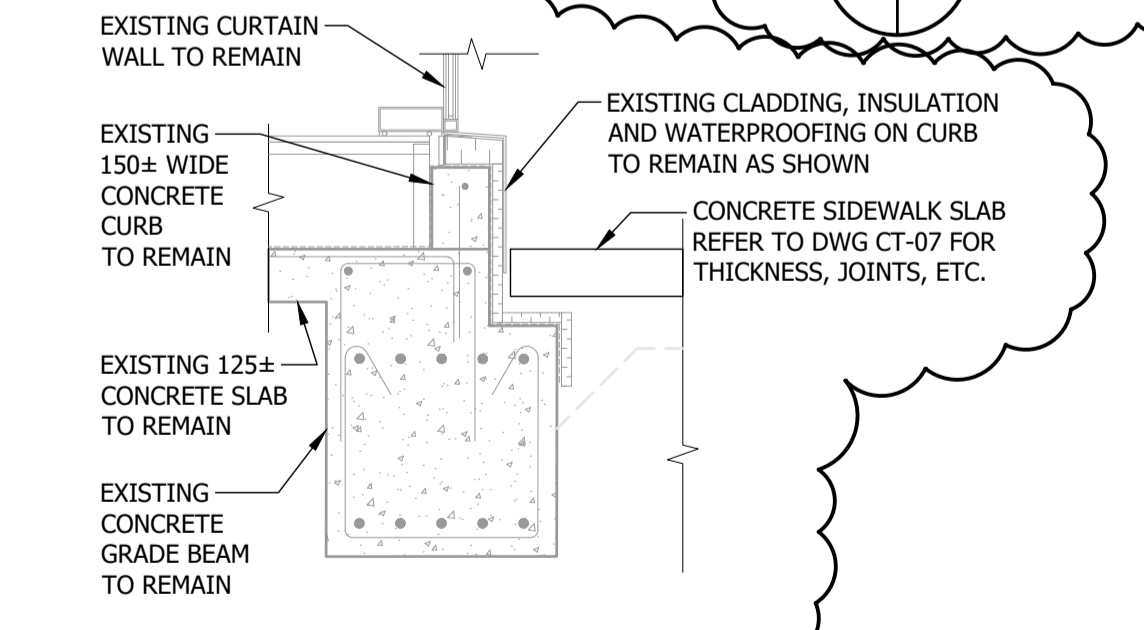
5 WATERPROOFING TRANSITION SECTION
CS-2.7 CS-4.6 1:20



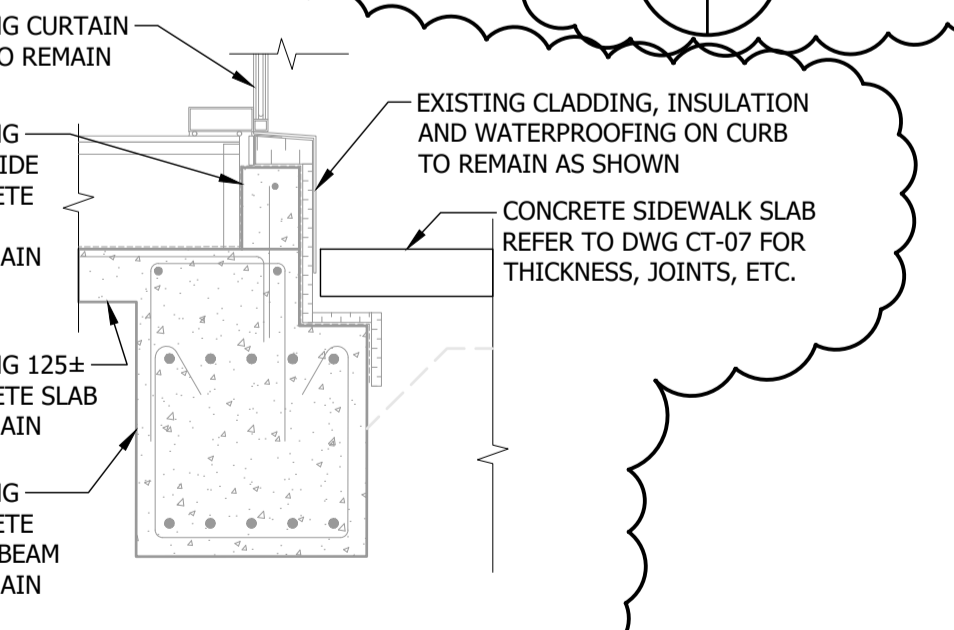
5a WATERPROOFING TRANSITION DETAIL
CS-4.6 CS-4.6 1:5



7 SECTION
CS-2.7 CS-4.6 1:20

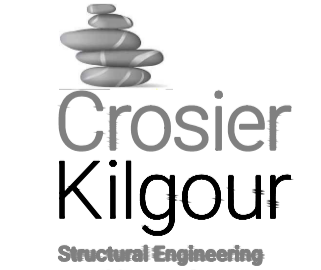



8 SECTION
CS-2.7 CS-4.6 1:20



9 SECTION
CS-2.7 CS-4.6 1:20

C:\Users\veas\OneDrive - Crosier Kilgour\General - 2024-04-10 - Portage & Main Pedestrian Opening\06 Drawings\2024-04-10_PORTAGE-MAIN.dwg

B.M. ELEV.	DESIGNED BY	SMC/DJM		ENGINEER'S SEAL		
	DRAWN BY	MS/SAS			THE CITY OF WINNIPEG PUBLIC WORKS DEPARTMENT	
	CHECKED BY	SMC			PORTAGE & MAIN PEDESTRIAN OPENING	CITY DRAWING NUMBER
	APPROVED BY	DJM			RELEASED FOR CONSTRUCTION	SHEET OF
1 ADDENDUM 01	24-09-27	SMC	HOR. SCALE AS NOTED		CONSULTANT PROJECT NUMBER	
0 ISSUED FOR TENDER	24-09-09	SMC	VERTICAL AS NOTED	2024-0410		
NO. REVISIONS	DATE	BY	DATE	2024-09-27	DATE	

SECTION 5		SECTION 6		SECTION 7		SECTION 8		SECTION 9	
SECTION 1		SECTION 2		SECTION 3		SECTION 5a		SECTION 6	
SECTION 1a		SECTION 1a		SECTION 1a		SECTION 1a		SECTION 1a	
SECTION 1a		SECTION 1a		SECTION 1a		SECTION 1a		SECTION 1a	
SECTION 1a		SECTION 1a		SECTION 1a		SECTION 1a		SECTION 1a	
SECTION 1a		SECTION 1a		SECTION 1a		SECTION 1a		SECTION 1a	
SECTION 1a		SECTION 1a		SECTION 1a		SECTION 1a		SECTION 1a	
SECTION 1a		SECTION 1a		SECTION 1a		SECTION 1a		SECTION 1a	
SECTION 1a		SECTION 1a		SECTION 1a		SECTION 1a		SECTION 1a	
SECTION 1a		SECTION 1a		SECTION 1a		SECTION 1a		SECTION 1a	

CITY DRAWING NUMBER
SHEET OF
CONSULTANT DRAWING NUMBER