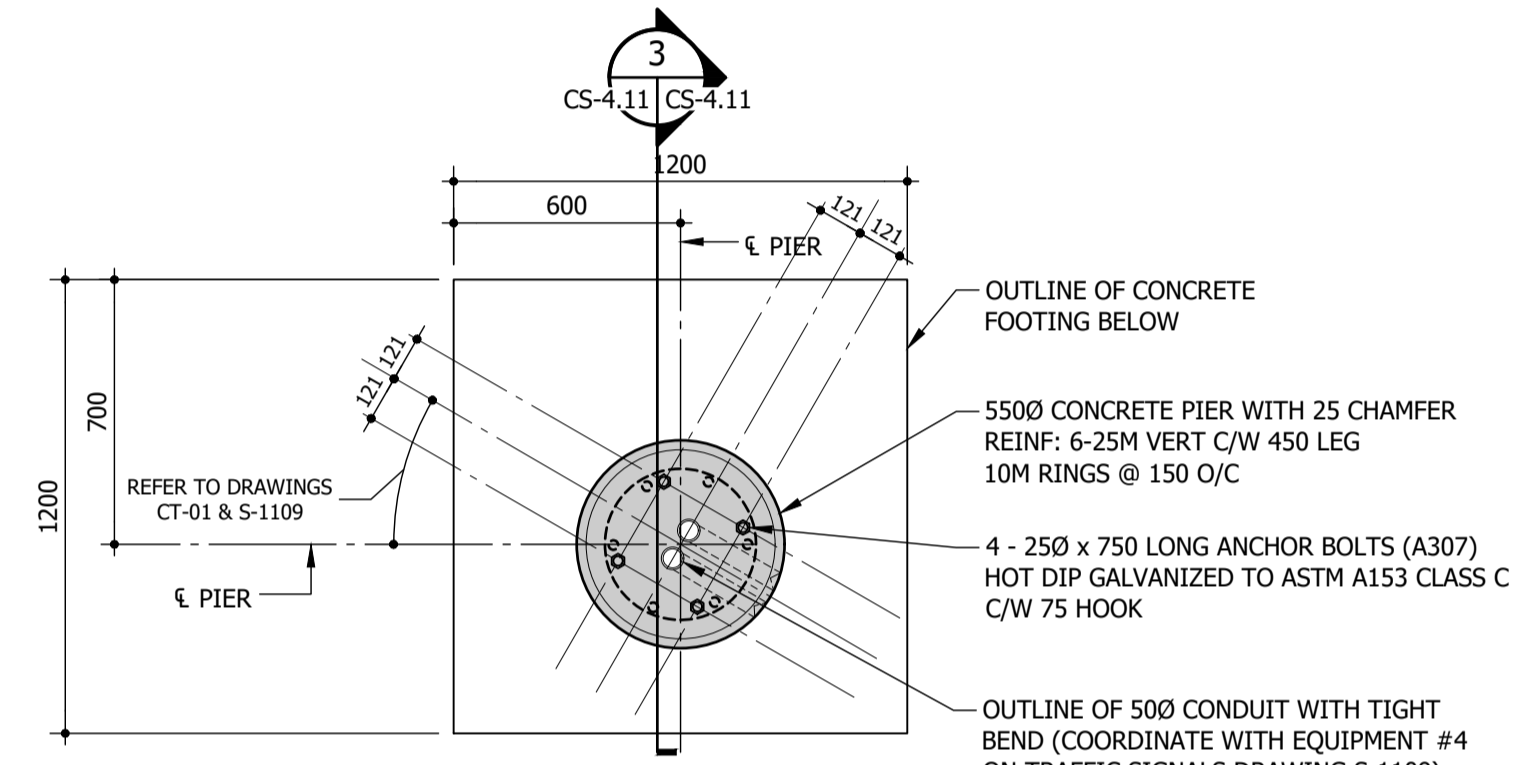


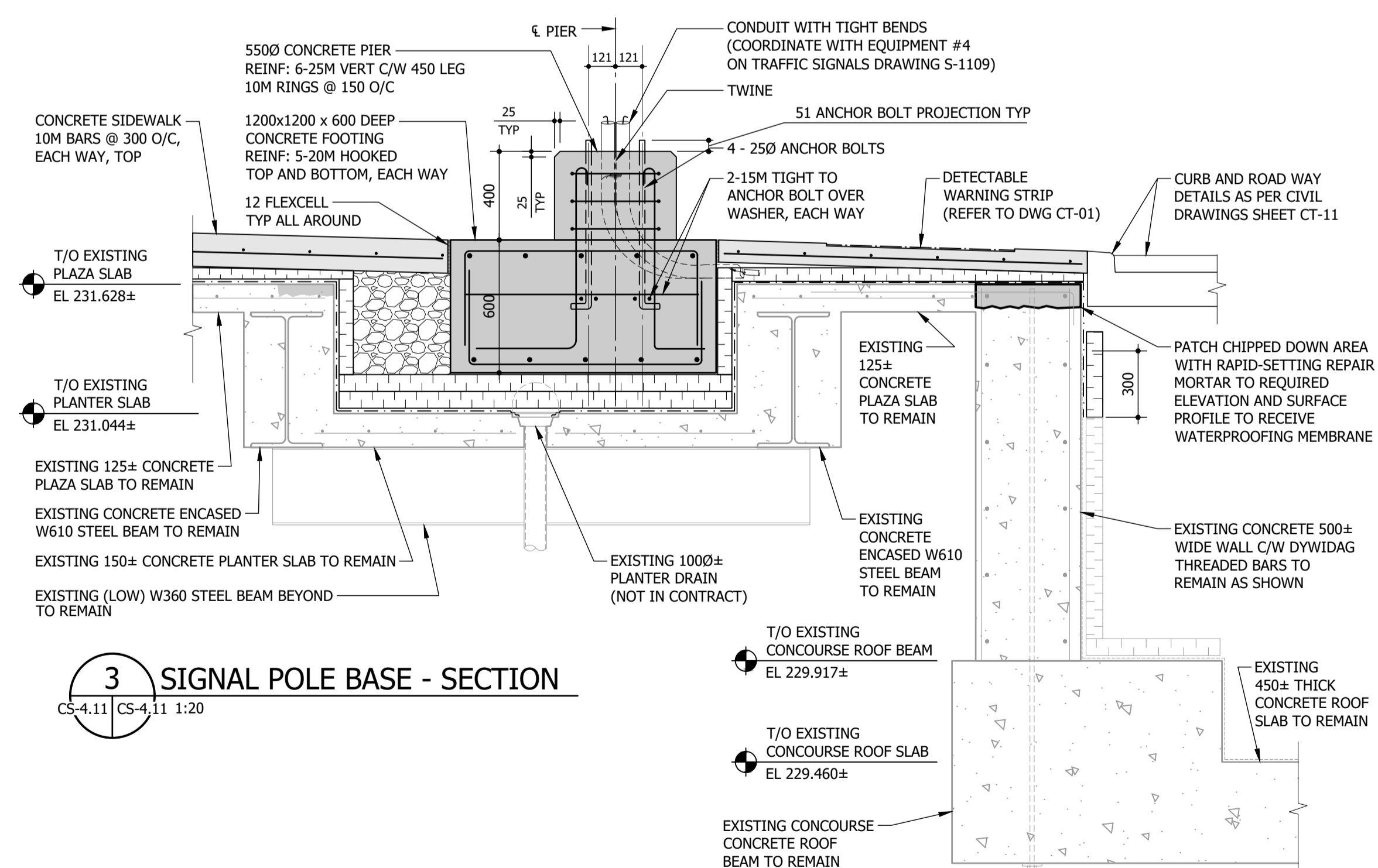
**1 SIGNAL POLE BASE - FOOTING PLAN DETAIL**  
CS-2.7 CS-4.11 1:20

- CUSTOM SIGNAL POLE BASE FOR TRAFFIC SIGNAL EQUIPMENT (#4) IDENTIFIED ON DRAWING S-1109.
- COORDINATE WITH TRAFFIC SIGNALS DRAWING S-1109 AND CIVIL DRAWINGS CT-01 TO CT-06 FOR ANCHOR BOLT ANGLES/ORIENTATION.
- SITE CONFIRM WITH CONTRACT ADMINISTRATOR THAT SIGNAL BASE LOCATION DOES NOT INTERFERE WITH EXISTING STRUCTURE OR WATERPROOFING.

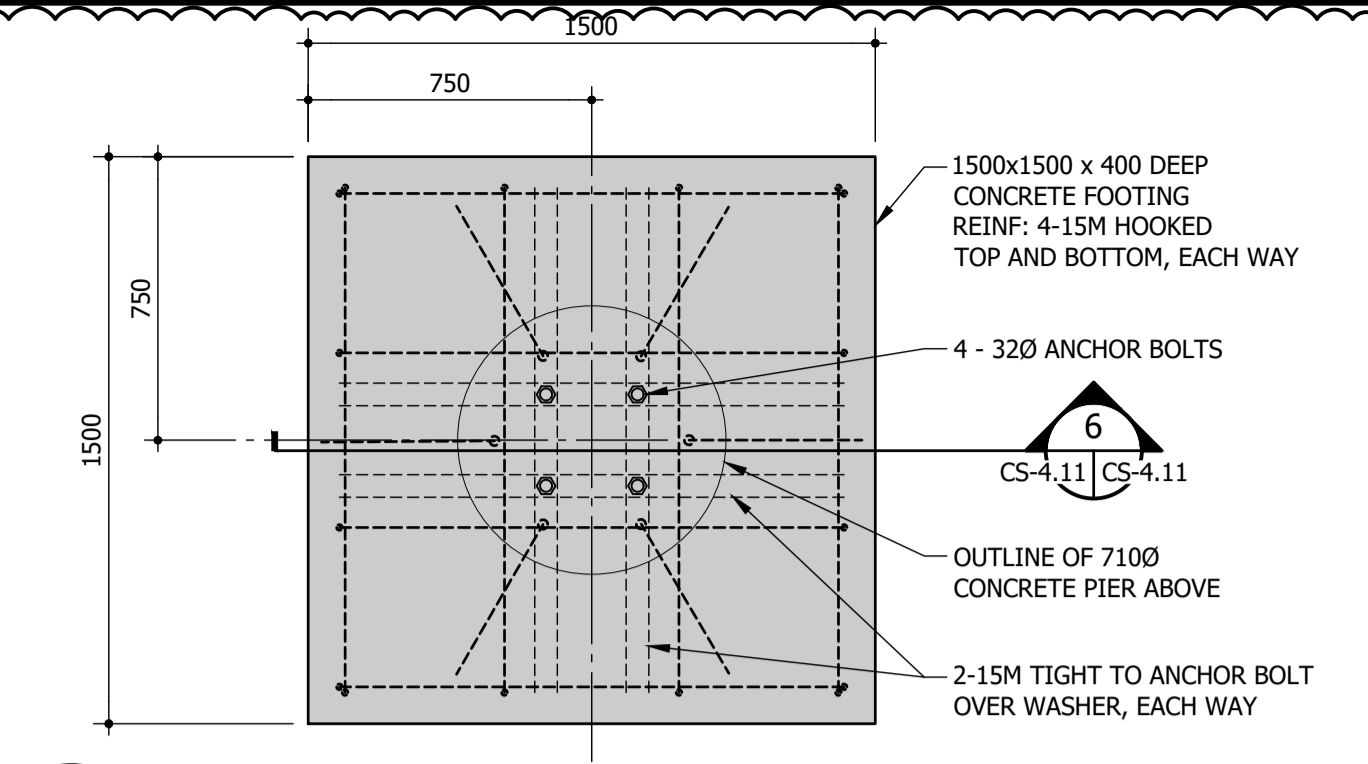


**2 SIGNAL POLE BASE - PIER PLAN DETAIL**  
CS-2.7 CS-4.11 1:20

- CUSTOM SIGNAL POLE BASE FOR TRAFFIC SIGNAL EQUIPMENT (#4) IDENTIFIED ON DRAWING S-1109.
- COORDINATE WITH TRAFFIC SIGNALS DRAWING S-1109 AND CIVIL DRAWINGS CT-01 TO CT-06 FOR ANCHOR BOLT ANGLES/ORIENTATION.
- SITE CONFIRM WITH CONTRACT ADMINISTRATOR THAT SIGNAL BASE LOCATION DOES NOT INTERFERE WITH EXISTING STRUCTURE OR WATERPROOFING.

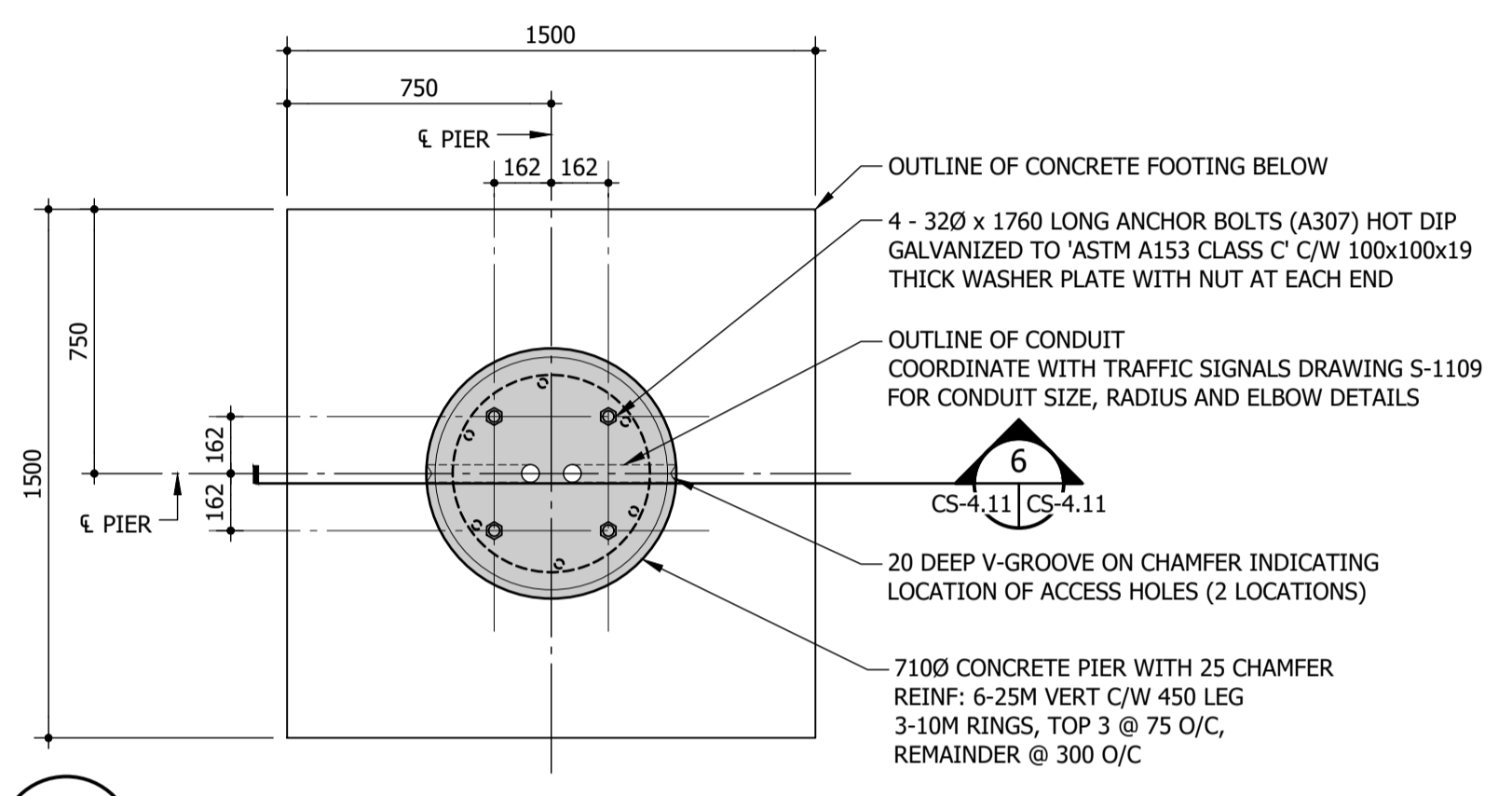


**3 SIGNAL POLE BASE - SECTION**  
CS-4.11 CS-4.11 1:20



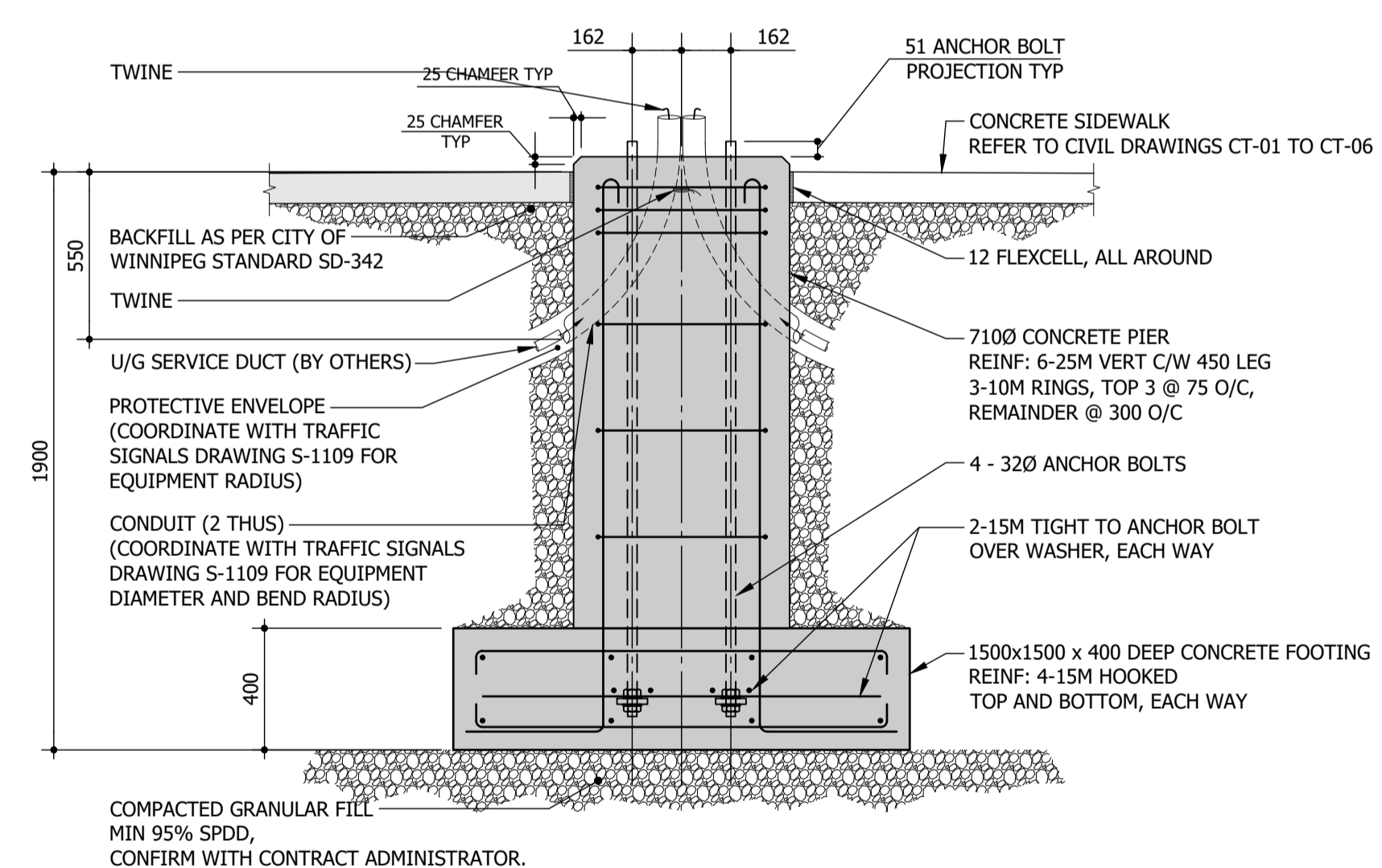
**4 SIGNAL POLE BASE - FOOTING PLAN DETAIL**  
CS-4.11 1:20

- CUSTOM SIGNAL POLE BASE FOR TRAFFIC SIGNAL EQUIPMENT #1, #2, #8, #9, #10, #11, #12. SIGNAL EQUIPMENT & LOCATIONS IDENTIFIED ON DRAWING S-1109.
- COORDINATE WITH TRAFFIC SIGNALS DRAWING S-1109 AND CIVIL DRAWINGS CT-01 TO CT-06 FOR ANCHOR BOLT ANGLES/ORIENTATION.
- SITE CONFIRM WITH CONTRACT ADMINISTRATOR THAT SIGNAL BASE LOCATIONS DO NOT INTERFERE WITH EXISTING STRUCTURE OR WATERPROOFING.



**5 SIGNAL POLE BASE - PIER PLAN DETAIL**  
CS-4.11 1:20

- CUSTOM SIGNAL POLE BASE FOR TRAFFIC SIGNAL EQUIPMENT #1, #2, #8, #9, #10, #11, #12. SIGNAL EQUIPMENT & LOCATIONS IDENTIFIED ON DRAWING S-1109.
- COORDINATE WITH TRAFFIC SIGNALS DRAWING S-1109 AND CIVIL DRAWINGS CT-01 TO CT-06 FOR ANCHOR BOLT ANGLES/ORIENTATION.
- SITE CONFIRM WITH CONTRACT ADMINISTRATOR THAT SIGNAL BASE LOCATIONS DO NOT INTERFERE WITH EXISTING STRUCTURE OR WATERPROOFING.



**6 SIGNAL POLE BASE - SECTION**  
CS-4.11 CS-4.11 1:20

C:\Users\vas\OneDrive - Crosier Kilgour\General - 2024-0410 - Portage & Main Pedestrian Opening\06 Drawings\06 Drawings\2024-0410\_PORTAGE-MAIN.dwg

B.M. ELEV.		DESIGNED BY	SMC/DJM		ENGINEER'S SEAL		CITY DRAWING NUMBER		
		DRAWN BY	MS/SAS				PORTAGE & MAIN PEDESTRIAN OPENING	SHEET OF	
		CHECKED BY	SMC					TYPICAL SECTIONS AND DETAILS	CS-22 OF 25
		APPROVED BY	DJM					CONSULTANT PROJECT NUMBER	CONSULTANT DRAWING NUMBER
1	ISSUED FOR ADDENDUM 02	24-10-08	SMC	2024-0410		CS-4.11			
0	ISSUED FOR TENDER	24-09-09	SMC						
NO.	REVISIONS	DATE	BY	DATE	2024-10-08	DATE			