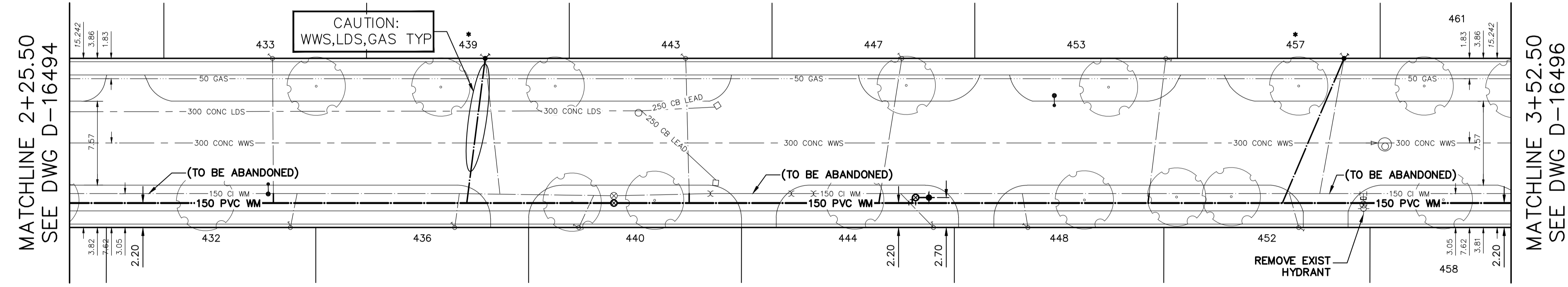
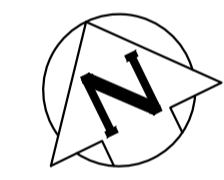


WATER SERVICE INFORMATION					
ADDRESS	SIZE (mm) MATERIAL (STREET)	SIZE (mm) MATERIAL (PROP.)	SHORT & LONG MEASUREMENT	CORP LOCATION	REMARKS
432 LEIGHTON AVE RESIDENTIAL	20 CU	20 CU	0.87 WEL BLDG 142.430 EWL ROCH ST	0.6 E OF S/C	RECONNECT SERVICE
433 LEIGHTON AVE RESIDENTIAL	20 CU	20 CU	3.20 WEL BLDG 140.810 EWL ROCH ST	OPP OF S/C	RECONNECT SERVICE
436 LEIGHTON AVE RESIDENTIAL	20 CU	20 CU	1.95 WEL BLDG 157.260 EWL ROCH ST	0.4 E OF S/C	RECONNECT SERVICE
439 LEIGHTON AVE RESIDENTIAL	20 CU	20 CU	5.39 WEL BLDG 159.990 EWL ROCH ST	1.3 E OF S/C	RENEW TO R W/20 CU
440 LEIGHTON AVE RESIDENTIAL	20 CU	20 CU	3.62 EWL BLDG 168.440 EWL ROCH ST	1.4 E OF S/C	RECONNECT SERVICE
443 LEIGHTON AVE RESIDENTIAL	20 CU	20 CU	3.39 WEL BLDG 178.070 EWL ROCH ST	OPP OF S/C	RECONNECT SERVICE
444 LEIGHTON AVE RESIDENTIAL	20 CU	20 CU	0.10 WEL BLDG	3.0 W OF S/C	RECONNECT SERVICE
447 LEIGHTON AVE RESIDENTIAL	20 CU	20 CU	3.72 WEL BLDG	1.9 W OF S/C	RECONNECT SERVICE
448 LEIGHTON AVE RESIDENTIAL	20 CU	20 CU	3.45 EWL BLDG	0.5 W OF S/C	RECONNECT SERVICE
452 LEIGHTON AVE RESIDENTIAL	20 CU	20 CU	154.040 WWL WATT ST	0.72 EEL BLDG	RECONNECT SERVICE
453 LEIGHTON AVE RESIDENTIAL	20 CU	20 CU	118.230 WWL WATT ST	0.8 W OF S/C	RECONNECT SERVICE
457 LEIGHTON AVE RESIDENTIAL	20 CU	20 CU	0.25 EEL BLDG 130.230 WWL WATT ST	1.5 W E OF S/C	RECONNECT SERVICE
457 LEIGHTON AVE RESIDENTIAL	20 CU	20 CU	1.41 WEL BLDG	2.2 W OF S/C	RENEW TO R W/20 CU
457 LEIGHTON AVE RESIDENTIAL	20 CU	20 CU	114.160 WWL WATT ST		

* SERVICES TO BE RENEWED TO R. ALL OTHERS TO BE RECONNECTED

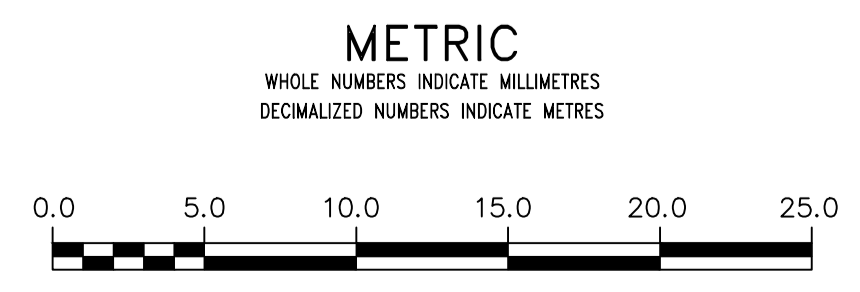
NOTE: CHAINAGES SHOWN ARE ALONG S. R. OF LEIGHTON AVENUE

LEIGHTON AVENUE



FOR INDEX SEE D-16489

NOTE: ALL VALVES TO BE INSTALLED COUNTERCLOCKWISE TO CLOSE

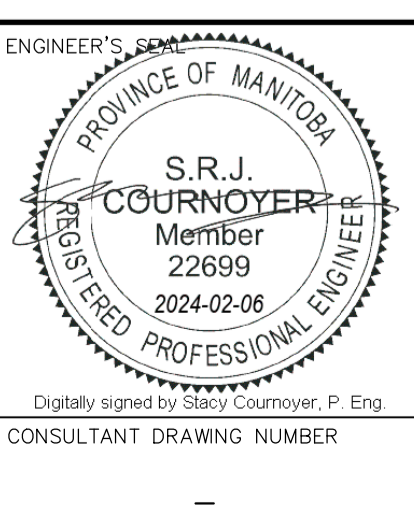


WARNING
IF POWER EQUIPMENT OR EXPLOSIVES ARE TO BE USED FOR EXCAVATION ON THIS PROJECT THE CONTRACTOR MUST:
1) NOTIFY THE GAS COMPANY OF THE PROPOSED LOCATION OF EXCAVATION.
2) TAKE PRECAUTION TO AVOID DAMAGE TO GAS COMPANY INSTALLATIONS.
SEE PROVINCIAL REGULATION 210/72 FOR DETAILS

LOCATION APPROVED
UNDERGROUND STRUCTURES
SUPV. U/G STRUCTURES COMMITTEE DATE
NOTE:
LOCATION OF UNDERGROUND STRUCTURES AS SHOWN ARE BASED ON THE BEST INFORMATION AVAILABLE BUT NO GUARANTEE IS GIVEN THAT ALL EXISTING UTILITIES ARE SHOWN OR THAT THE GIVEN LOCATIONS ARE EXACT. CONFIRMATION OF EXISTENCE AND EXACT LOCATION OF ALL SERVICES MUST BE OBTAINED FROM THE INDIVIDUAL UTILITIES BEFORE PROCEEDING WITH CONSTRUCTION.

VERTICAL DATUM: CGVD28 (HT2.0 Geoid)			
HORIZONTAL DATUM: NAD83 (June 1990), Zone 14			
NO.	REVISIONS	DATE	BY

DESIGNED BY	JB	CHECKED BY	SC
DRAWN BY	AJ	APPROVED BY	SC
SCALE:	HORIZONTAL 1:250 VERTICAL 1:50		
DATE	2024 02 06	RELEASED FOR CONSTRUCTION	DATE
PLOT DATE: 2024 02 06		CONSULTANT DRAWING NUMBER	



THE CITY OF WINNIPEG
WATER AND WASTE DEPARTMENT
ENGINEERING DIVISION

2024 WATER MAIN RENEWALS
CONTRACT 1
LEIGHTON AVENUE
122.5 E OF ROCH STREET TO
99 W OF WATT STREET

SHEET 6 OF 10
CITY DRAWING NUMBER
D-16493