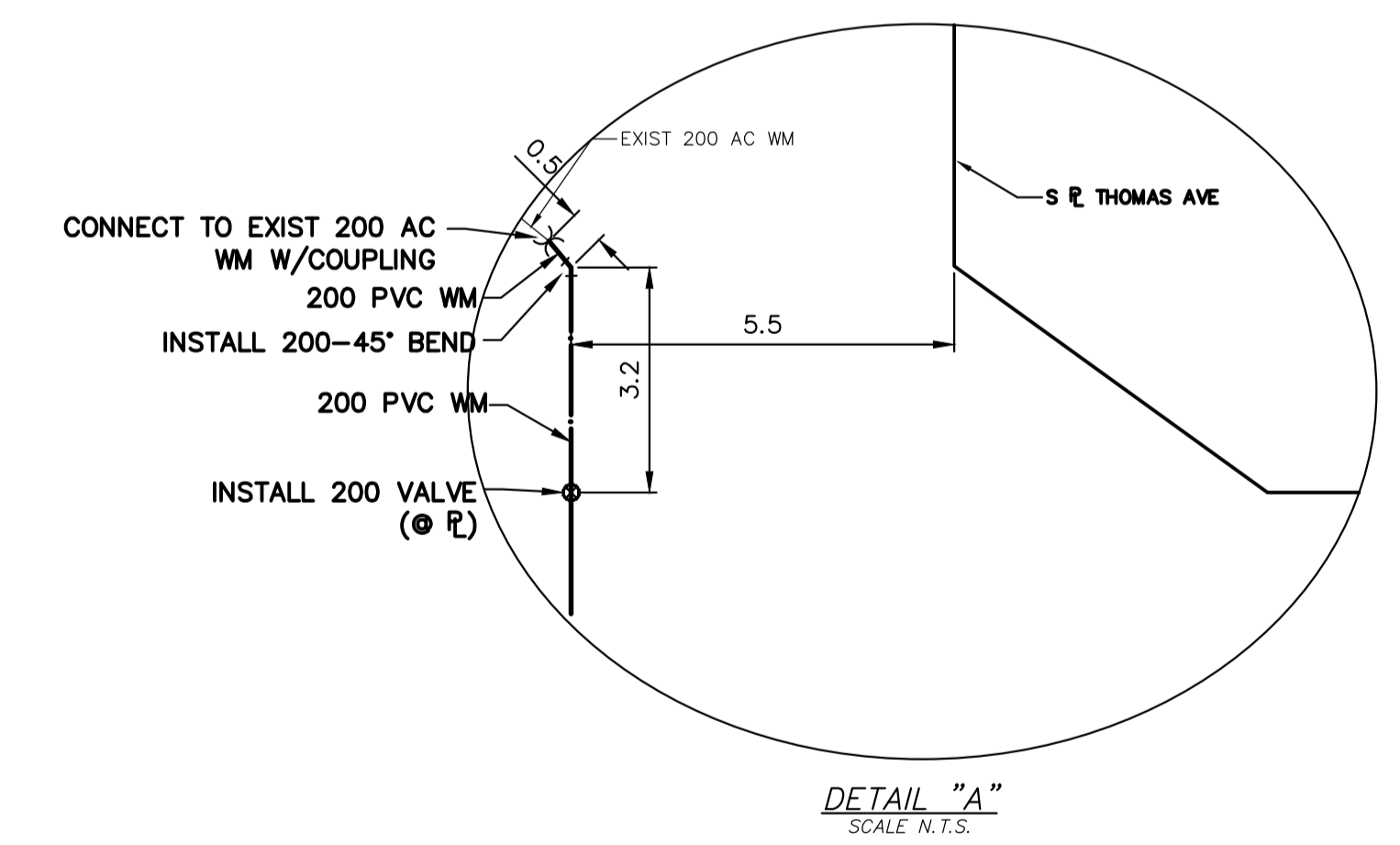
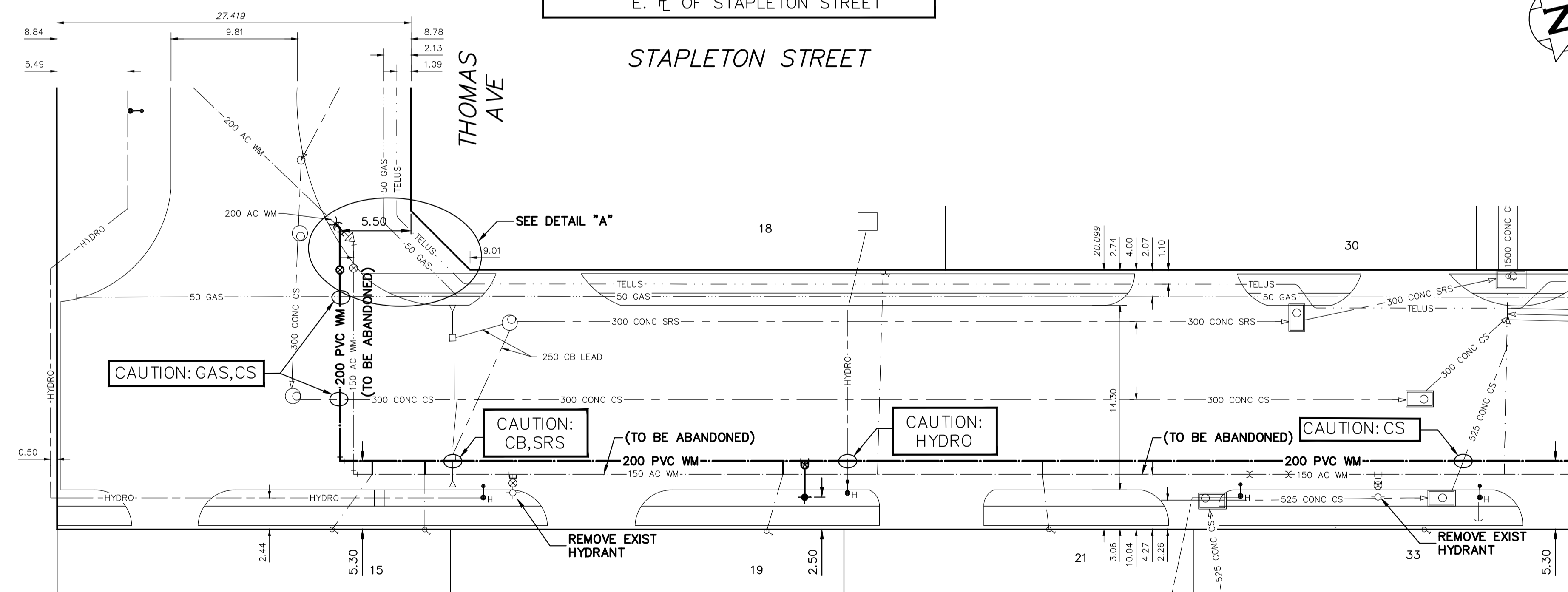


WATER SERVICE INFORMATION

ADDRESS	SIZE (mm) MATERIAL (STREET)	SIZE (mm) MATERIAL (PROP.)	SHORT & LONG MEASUREMENT	CORP. LOCATION	REMARKS
33 STAPLETON ST	COMMERCIAL	50	16.05 SNL HSE	-	RECONNECT SERVICE
30 STAPLETON ST	COMMERCIAL	20	107.800 SSL NAIRN AVE	-	RECONNECT SERVICE
21 STAPLETON ST	COMMERCIAL	20	16.27 NSL HSE	OPP OF S/C	RECONNECT SERVICE
19 STAPLETON ST	COMMERCIAL	20	83.540>NNL THOMAS AVE	0.6 N OF S/C	RECONNECT SERVICE
18 STAPLETON ST	COMMERCIAL	20	0.88 NSL HSE	-	RECONNECT SERVICE
15 STAPLETON ST	COMMERCIAL	20	49.420>NNL THOMAS AVE	1.3 N OF S/C	RECONNECT SERVICE
15 STAPLETON ST	COMMERCIAL	20	3.98 SNL HSE	-	RECONNECT SERVICE
15 STAPLETON ST	COMMERCIAL	20	27.550>NNL THOMAS AVE	0.4 S OF S/C	RECONNECT SERVICE
15 STAPLETON ST	COMMERCIAL	20	36.570>NNL THOMAS AVE	0.4 S OF S/C	RECONNECT SERVICE
15 STAPLETON ST	COMMERCIAL	50	0.10 SNL HSE	OPP OF S/C	RECONNECT SERVICE
15 STAPLETON ST	COMMERCIAL	50	1.080>NNL THOMAS AVE	-	RECONNECT SERVICE
15 STAPLETON ST	COMMERCIAL	50	7.29 SNL HSE	3.1 N OF S/C	RECONNECT SERVICE
15 STAPLETON ST	COMMERCIAL	50	6.120>NNL THOMAS AVE	-	RECONNECT SERVICE

* SERVICES TO BE RENEWED TO R. ALL OTHERS TO BE RECONNECTED

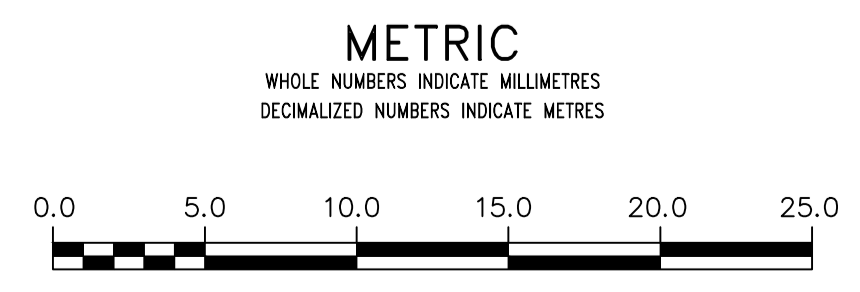
NOTE: CHAINAGES SHOWN ARE ALONG E. R. OF STAPLETON STREET



MATCHLINE 1+90.00
SEE DWG D-16499

FOR INDEX SEE D-16489

NOTE: ALL VALVES TO BE INSTALLED COUNTERCLOCKWISE TO CLOSE



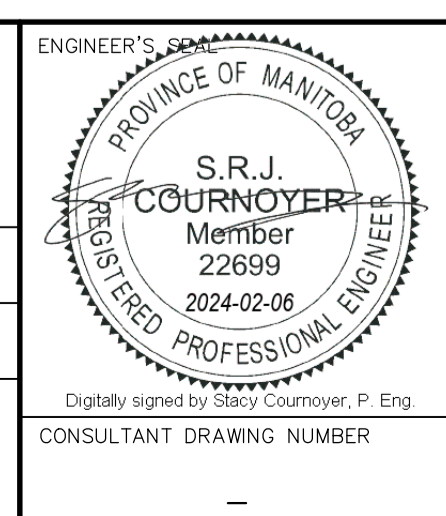
WARNING
IF POWER EQUIPMENT OR EXPLOSIVES ARE TO BE USED FOR EXCAVATION ON THIS PROJECT THE CONTRACTOR MUST:
1) NOTIFY THE GAS COMPANY OF THE PROPOSED LOCATION OF EXCAVATION.
2) TAKE PRECAUTION TO AVOID DAMAGE TO GAS COMPANY INSTALLATIONS.
SEE PROVINCIAL REGULATION 210/72 FOR DETAILS

LOCATION APPROVED UNDERGROUND STRUCTURES
SUPV. U/G STRUCTURES COMMITTEE DATE
NOTE:
LOCATION OF UNDERGROUND STRUCTURES AS SHOWN ARE BASED ON THE BEST INFORMATION AVAILABLE BUT NO GUARANTEE IS GIVEN THAT ALL EXISTING UTILITIES ARE SHOWN OR THAT THE GIVEN LOCATIONS ARE EXACT. CONFIRMATION OF EXISTENCE AND EXACT LOCATION OF ALL SERVICES MUST BE OBTAINED FROM THE INDIVIDUAL UTILITIES BEFORE PROCEEDING WITH CONSTRUCTION.

VERTICAL DATUM: CGVD28 (HT2.0 Geoid)
HORIZONTAL DATUM: NAD83 (June 1990), Zone 14

NO.	REVISIONS	DATE	BY

DESIGNED BY	JB	CHECKED BY	SC
DRAWN BY	AJ	APPROVED BY	SC
SCALE:		RELEASED FOR CONSTRUCTION	
HORIZONTAL	1:250		
VERTICAL	1:50		
DATE	2024 02 06	DATE	
PLOT DATE:	2024 02 06		



THE CITY OF WINNIPEG
WATER AND WASTE DEPARTMENT
ENGINEERING DIVISION

2024 WATER MAIN RENEWALS
CONTRACT 1
STAPLETON STREET
THOMAS AVENUE TO
90 N OF THOMAS AVENUE

SHEET 9 OF 10
CITY DRAWING NUMBER
D-16496