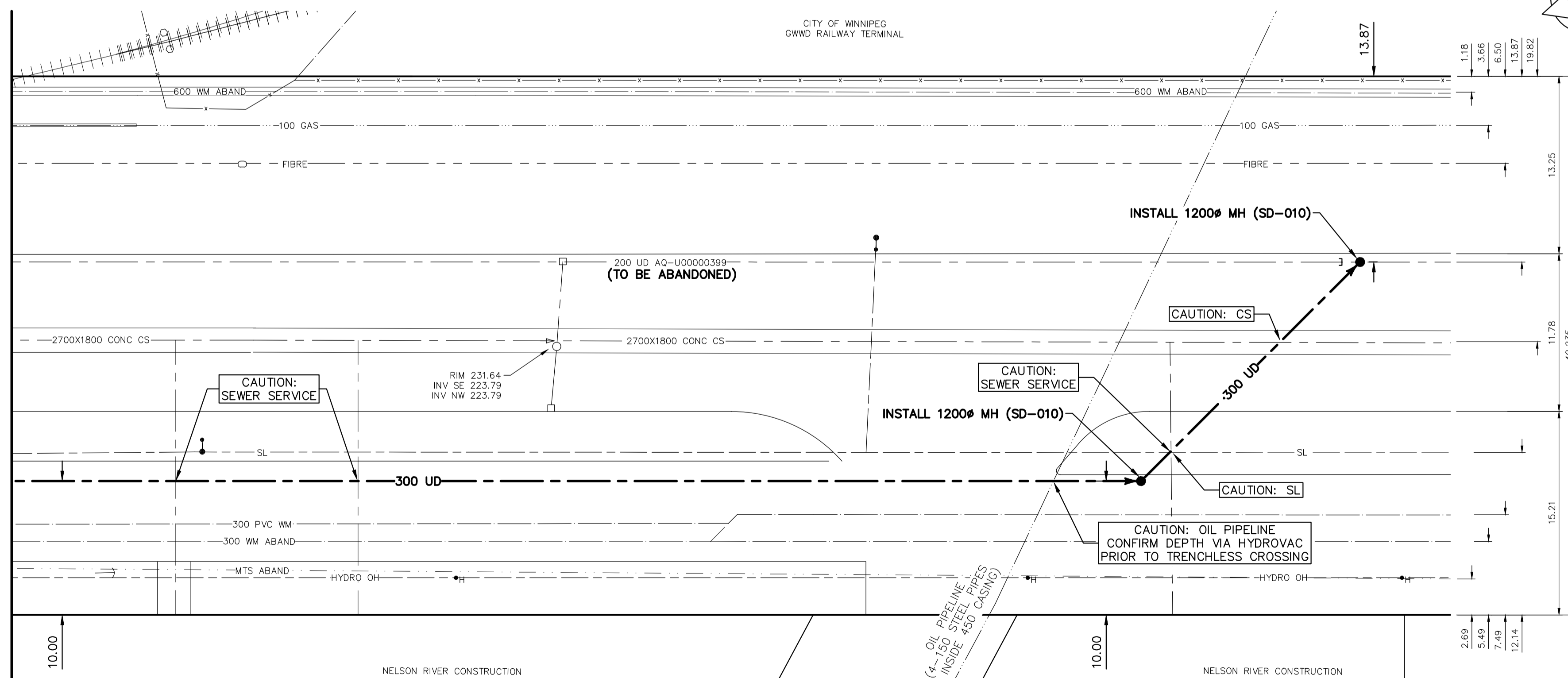


NOTE: CHAINAGES SHOWN ARE ALONG E_C OF DAWSON RD N

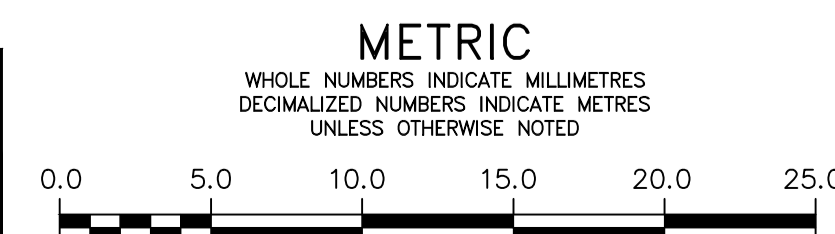
DAWSON ROAD N

CITY OF WINNIPEG
GWD RAILWAY TERMINAL

MATCHLINE 2+10.00
SEE DWG 1-0751N-C0008-001



FOR INDEX SEE DWG
1-0751A-D0007-001



LOCATION APPROVED
UNDERGROUND STRUCTURES

SUPV. U/G STRUCTURES COMMITTEE DATE

NOTE:
LOCATION OF UNDERGROUND STRUCTURES AS SHOWN ARE BASED ON THE BEST INFORMATION AVAILABLE BUT NO GUARANTEE IS GIVEN THAT ALL EXISTING UTILITIES ARE SHOWN OR THAT THE GIVEN LOCATIONS ARE EXACT. CONFIRMATION OF EXISTENCE AND EXACT LOCATION OF ALL SERVICES MUST BE OBTAINED FROM THE INDIVIDUAL UTILITIES BEFORE PROCEEDING WITH CONSTRUCTION.

VERTICAL DATUM: CGVD28 (HT2.0 Geoid)	
HORIZONTAL DATUM: NAD83 (June 1990), Zone 14	
NO.	REVISIONS
1	ADDED EXISTING SEWER SERVICES 2024/10/18 ADB
0	ISSUED FOR CONSTRUCTION 2024/09/23 ADB
NO.	REVISIONS YYYY/MM/DD BY

DESIGNED BY: ADB
CHECKED BY: JF
DRAWN BY: DML
APPROVED BY: ADB

SCALE:
HORIZONTAL: 1:250
VERTICAL: 1:50

DATE: SEPTEMBER 23, 2024
PLOT DATE: 2024 10 18

ENGINEER'S SEAL

ORIGINAL DRAWING REV No. 0

SEALED BY:
A.D. BRAUN
Member 24453
2024-09-23

CONSULTANT DRAWING NUMBER

THE CITY OF WINNIPEG
WATER AND WASTE DEPARTMENT
ENGINEERING SERVICES DIVISION

BRANCH 1 AQUEDUCT
UNDERDRAIN OUTFALL REPAIRS
DAWSON ROAD N
10m N OF MESSIER STREET TO
275m S OF PLINGUET STREET

SHEET 12 OF 17
CITY DRAWING NUMBER
1-0751N-C0009-001