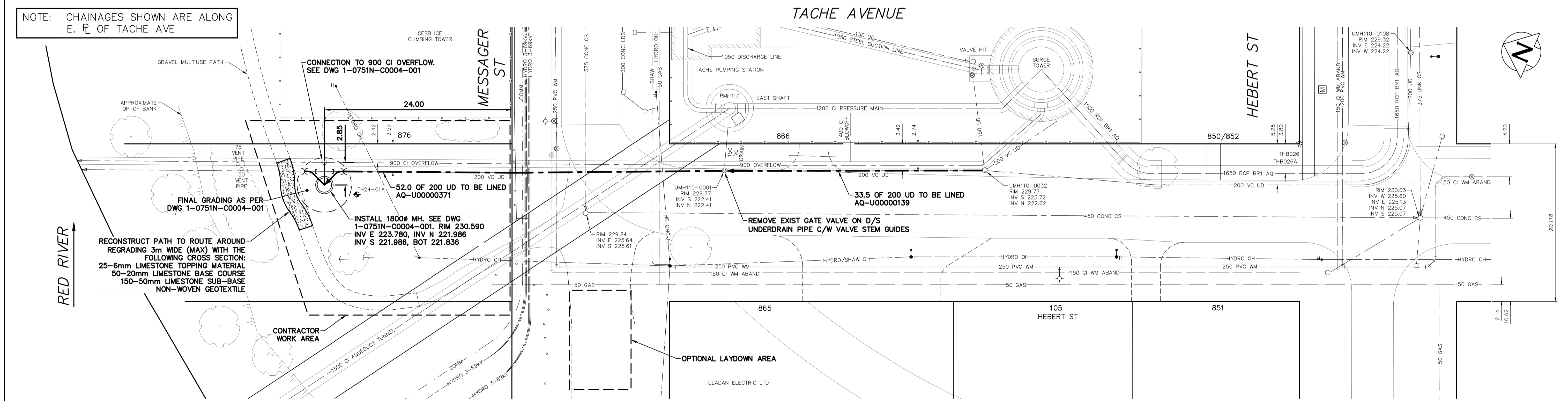


- NOTES:**
- CONSTRUCTION NOTES:**
- NO STOCKPILING OF MATERIALS WITHIN 30m OF THE TOP OF THE RIVER BANK.
 - ALL EXCAVATED MATERIAL UNSUITABLE FOR BACKFILL SHALL BE REMOVED AND DISPOSED OFF SITE.
 - THE CONTRACTOR SHALL DEVELOP SUITABLE ACCESS AND LAYDOWN AREA(S) AS REQUIRED TO FACILITATE CONSTRUCTION. THE CONTRACTOR SHALL MAKE EVERY REASONABLE EFFORT TO MINIMIZE THE CONSTRUCTION FOOTPRINT AND SURFACE IMPACTS. CONTRACTOR SHALL PROVIDE ACCESS PLAN AND EQUIPMENT LIST PRIOR TO CONSTRUCTION.
 - PROTECT TREES UNLESS MARKED FOR REMOVAL. REVIEW AND CONFIRM ANY TREES THAT NEED TO BE REMOVED WITH THE CONTRACT ADMINISTRATOR, PRIOR TO PROCEEDING WITH REMOVAL.
 - CONTRACTOR SHALL PROTECT AND MAINTAIN EXISTING GEOTECHNICAL BORE HOLES AND INSTRUMENTATION.
 - THE CONTRACTOR SHALL LOCATE THE EXISTING SURGE TOWER OVERFLOW PRIOR TO INSTALLATION OF SHORING.
 - EXISTING UNDERDRAIN MANHOLES 750mm DIAMETER.
 - GRANULAR PATH MATERIAL SHALL BE PLACED AND COMPACTED IN ACCORDANCE WITH CW 3310.
 - ALL MATERIALS, INCLUDING TEMPORARY MATERIALS PLACED FOR CONSTRUCTION ACCESS, SHALL BE REMOVED FROM SITE FOLLOWING COMPLETION OF CONSTRUCTION.
- RESTORATION NOTES:**
- RESTORE ALL GRASSED AREAS VIA SODDING.
 - RESTORE GRAVEL MULTIUSE PATH AS NOTED. TEMPORARILY RESTORE TRAIL BETWEEN CONSTRUCTION AND PERMANENT RESTORATION.
 - RESTORE ALL SIDEWALKS AND PAVEMENT IN ACCORDANCE WITH THE SPECIFICATIONS.
- EROSION PROTECTION NOTES:**
- EROSION PROTECTION MEASURES SHALL BE INSTALLED AS SHOWN AND AS PER THE CONTRACTORS SUBMITTED EROSION AND SEDIMENT CONTROL PLAN.
- TRAFFIC NOTES:**
- PLACE SIDEWALK CLOSED SIGNS AT START AND END OF PATHS/TRAILS IF TRAILS OR PATHS BLOCKED DURING CONSTRUCTION.



NOTE: CHAINAGES SHOWN ARE ALONG E. R. OF TACHE AVE

SEINE RIVER

RED RIVER

RECONSTRUCT PATH TO ROUTE AROUND REGRADING 3m WIDE (MAX) WITH THE FOLLOWING CROSS SECTION:
 25-6mm LIMESTONE TOPPING MATERIAL
 50-20mm LIMESTONE BASE COURSE
 150-50mm LIMESTONE SUB-BASE
 NON-WOVEN GEOTEXTILE

FINAL GRADING AS PER DWG 1-0751N-C0004-001

INSTALL 1800Ø MH. SEE DWG 1-0751N-C0004-001. RIM 230.590
 INV E 223.780, INV N 221.986
 INV S 221.986, BOT 221.836

52.0 OF 200 UD TO BE LINED AQ-U00000371

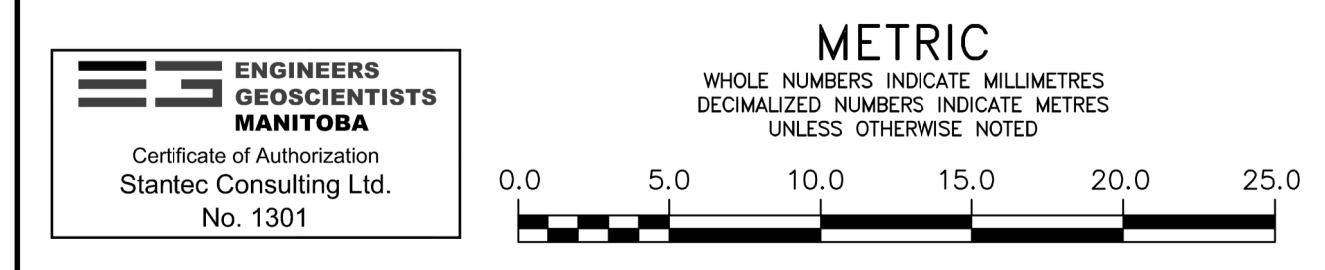
33.5 OF 200 UD TO BE LINED AQ-U00000139

REMOVE EXIST GATE VALVE ON D/S UNDERDRAIN PIPE C/W VALVE STEM GUIDES

OPTIONAL LAYDOWN AREA

CLADAN ELECTRIC LTD

FOR INDEX SEE DWG 1-0751A-D0007-001



ENGINEERS GEOSCIENTISTS MANITOBA
 Certificate of Authorization
 Stantec Consulting Ltd.
 No. 1301

LOCATION APPROVED UNDERGROUND STRUCTURES		VERTICAL DATUM: CGVD28 (HT2.0 Geoid)	
SUPV. U/G STRUCTURES COMMITTEE		HORIZONTAL DATUM: NAD83 (June 1990), Zone 14	
NOTE: LOCATION OF UNDERGROUND STRUCTURES AS SHOWN ARE BASED ON THE BEST INFORMATION AVAILABLE BUT NO GUARANTEE IS GIVEN THAT ALL EXISTING UTILITIES ARE SHOWN OR THAT THE GIVEN LOCATIONS ARE EXACT. CONFIRMATION OF EXISTENCE AND EXACT LOCATION OF ALL SERVICES MUST BE OBTAINED FROM THE INDIVIDUAL UTILITIES BEFORE PROCEEDING WITH CONSTRUCTION.			
NO.	ISSUED FOR CONSTRUCTION	DATE	BY
0	ISSUED FOR CONSTRUCTION	2024/09/23	ADB
NO.	REVISIONS	YYYY/MM/DD	BY

Stantec	
DESIGNED BY: BK/ADB	CHECKED BY: JF
DRAWN BY: DML	APPROVED BY: ADB
SCALE: HORIZONTAL 1:250	RELEASED FOR CONSTRUCTION
VERTICAL 1:50	JESSICA McCOMBE, P. Eng.
DATE: SEPTEMBER 23, 2024	DATE: SEPTEMBER 23, 2024

ENGINEER'S SEAL

CONSULTANT DRAWING NUMBER

THE CITY OF WINNIPEG
 WATER AND WASTE DEPARTMENT
 ENGINEERING SERVICES DIVISION

BRANCH I AQUEDUCT
 UNDERDRAIN OUTFALL REPAIRS
 BRANCH I AQUEDUCT
 AVENUE TACHE UNDERDRAIN OUTFALL
 PLAN & PROFILE

SHEET 5 OF 17
 CITY DRAWING NUMBER
 1-0751N-C0003-001