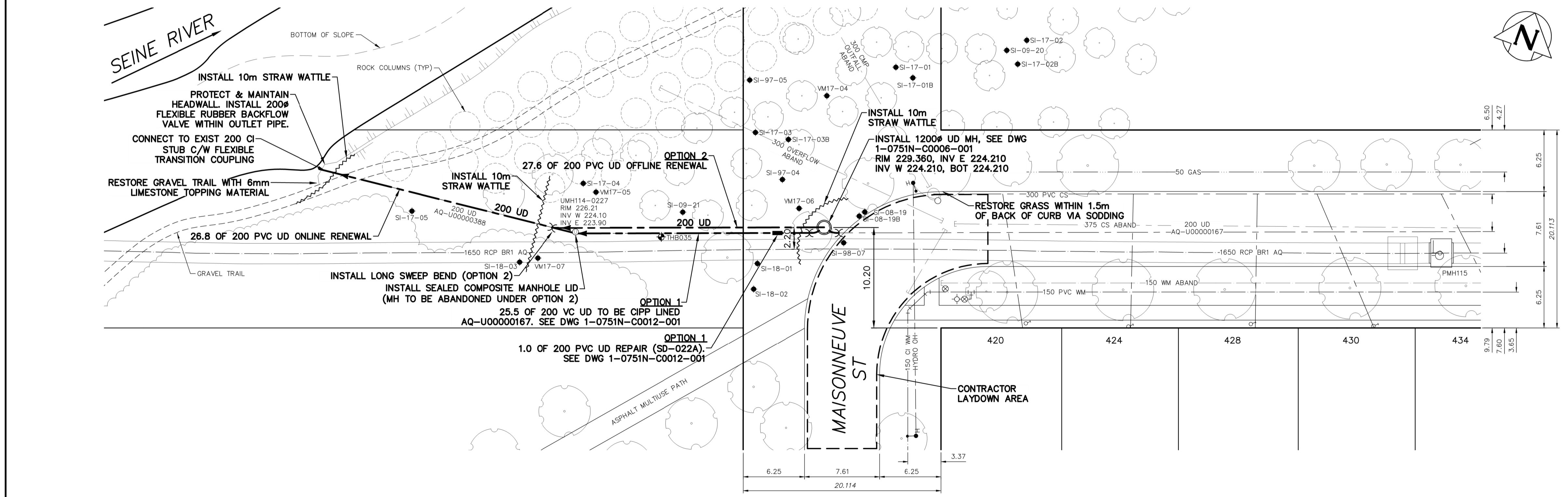
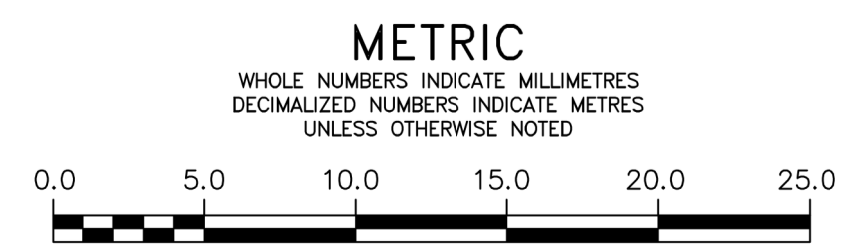


NOTE: CHAINAGES SHOWN ARE ALONG S. R. OF RUE NOTRE DAME



FOR INDEX SEE DWG 1-0751A-D0007-001

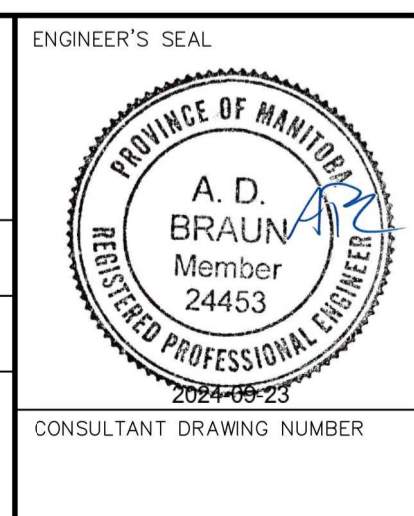
- NOTES:**
- SEQUENCE OF WORK:**
- CONSTRUCT EXCAVATION FOR NEW MANHOLE.
 - COMPLETE PRE-REPAIR CCTV INSPECTION FOR AQ-U00000167.
 - REVIEW CONDITION OF AQ-U00000167 WITH CONTRACT ADMINISTRATOR AND PROCEED WITH OPTION 1 OR 2 AS DIRECTED.
- OPTION 1:**
- COMPLETE EPR AT 20.5 U/S OF UMH114-0227.
 - INSTALL NEW MANHOLE.
 - ONLINE RENEWAL OF AQ-U00000388.
 - CIPP LINING OF AQ-U00000167 FROM UMH114-0227 TO NEW MANHOLE. MAY BE COMPLETED IN THE SPRING.
- OPTION 2:**
- OFFLINE RENEWAL OF AQ-U00000167 FROM UMH114-0227 TO NEW MANHOLE.
 - INSTALL NEW MANHOLE.
 - ABANDON EXISTING UNDERDRAIN ALONG THE SAME LENGTH.
 - ABANDON UMH114-0227.
 - ONLINE RENEWAL OF AQ-U00000388.
- CONSTRUCTION NOTES:**
- ALL WORK IN CLOSE PROXIMITY TO THE BRANCH I AQUEDUCT SHALL BE COMPLETED WITH AN ABUNDANCE OF CAUTION AND IN ACCORDANCE WITH THE SPECIFICATIONS.
 - NO STOCKPILING OF MATERIALS WITHIN 30m OF THE TOP OF THE RIVERBANK.
 - ALL EXCAVATED MATERIAL UNSUITABLE FOR BACKFILL SHALL BE REMOVED AND DISPOSED OFF SITE.
 - THE CONTRACTOR SHALL DEVELOP SUITABLE ACCESS AND LAYDOWN AREA(S) AS REQUIRED TO FACILITATE CONSTRUCTION. THE CONTRACTOR SHALL MAKE EVERY REASONABLE EFFORT TO MINIMIZE THE CONSTRUCTION FOOTPRINT AND SURFACE IMPACTS. CONTRACTOR SHALL PROVIDE ACCESS PLAN AND EQUIPMENT LIST PRIOR TO CONSTRUCTION.
 - PROTECT TREES UNLESS MARKED FOR REMOVAL. REVIEW AND CONFIRM ANY TREES THAT NEED TO BE REMOVED WITH THE CONTRACT ADMINISTRATOR, PRIOR TO PROCEEDING WITH REMOVAL.
 - CLEAR AND GRUB SHRUBS WHERE NECESSARY FOR INSTALLATION OF PROPOSED UNDERDRAIN, ACCESS ROAD CONSTRUCTION.
 - CONTRACTOR SHALL PROTECT AND MAINTAIN EXISTING GEOTECHNICAL BORE HOLES AND INSTRUMENTATION.
 - EXISTING UNDERDRAIN MANHOLES 750mm DIAMETER
 - EXCAVATIONS FOR UNDERDRAIN REPAIRS AND INSTALLATION WITHIN 5 m OF THE BRANCH I AQUEDUCT SHALL BE BACKFILLED TO CLASS 4 STANDARDS WITH THAWED CLAY BACKFILL MATERIAL.
 - ALL MATERIALS, INCLUDING TEMPORARY MATERIALS PLACED FOR CONSTRUCTION ACCESS, SHALL BE REMOVED FROM SITE FOLLOWING COMPLETION OF CONSTRUCTION.
- RESTORATION NOTES:**
- RESTORE RIVERBANK (NON MOWED AREAS) USING NATIVE SEED BLEND:
 - EXCAVATIONS TO BE BACKFILLED AND MOUNDED TO ACCOMMODATE SETTLEMENT. ALL DISTURBED AREAS TO BE PROTECTED BY PLACING STRAW OR LIGHT MULCH AND TRACKED TO PREVENT PONDING, RUTTING AND EROSION.
 - COMPLETE FLOOD TAMPING OF ALL EXCAVATIONS AFTER THE SPRING FRESHET.
 - HYDROSEED.
 - RESTORE MOWED GRASS AREAS VIA SODDING.
 - RESTORE PATHS, SIDEWALKS AND PAVEMENT IN ACCORDANCE WITH SPECIFICATIONS.
- TRAFFIC NOTES:**
- CONTRACTOR MAY CLOSE RUE NOTRE DAME / MAISONNEUVE ST FOR LAYDOWN AREA AS SHOWN. DO NOT BLOCK ACCESS TO THE DRIVEWAY TO #420 RUE NOTRE DAME.
 - PLACE SIDEWALK CLOSED SIGNS AT START AND END OF PATHS/TRAILS IF TRAILS OR PATHS BLOCKED DURING CONSTRUCTION.



LOCATION APPROVED UNDERGROUND STRUCTURES		VERTICAL DATUM: CGVD28 (HT2.0 Geoid)	
SUPV. U/G STRUCTURES COMMITTEE		HORIZONTAL DATUM: NAD83 (June 1990), Zone 14	
NOTE: LOCATION OF UNDERGROUND STRUCTURES AS SHOWN ARE BASED ON THE BEST INFORMATION AVAILABLE BUT NO GUARANTEE IS GIVEN THAT ALL EXISTING UTILITIES ARE SHOWN OR THAT THE GIVEN LOCATIONS ARE EXACT. CONFIRMATION OF EXISTENCE AND EXACT LOCATION OF ALL SERVICES MUST BE OBTAINED FROM THE INDIVIDUAL UTILITIES BEFORE PROCEEDING WITH CONSTRUCTION.		DESIGNED BY: BK/ADB	
		CHECKED BY: JF	
		DRAWN BY: DML	
		APPROVED BY: ADB	
		SCALE: HORIZONTAL: 1:250 VERTICAL: 1:50	
		RELEASED FOR CONSTRUCTION JESSICA McCOMBE, P. Eng.	
		DATE: SEPTEMBER 23, 2024	
		DATE: SEPTEMBER 23, 2024	
		PLOT DATE: 2024 09 23	

Stantec

DESIGNED BY: BK/ADB
CHECKED BY: JF
DRAWN BY: DML
APPROVED BY: ADB
SCALE: HORIZONTAL: 1:250, VERTICAL: 1:50
RELEASED FOR CONSTRUCTION: JESSICA McCOMBE, P. Eng.
DATE: SEPTEMBER 23, 2024



THE CITY OF WINNIPEG
WATER AND WASTE DEPARTMENT
ENGINEERING SERVICES DIVISION

BRANCH I AQUEDUCT
UNDERDRAIN OUTFALL REPAIRS
RUE NOTRE DAME UNDERDRAIN OUTFALL
PLAN & PROFILE

SHEET 8 OF 17
CITY DRAWING NUMBER
1-0751N-C0005-001