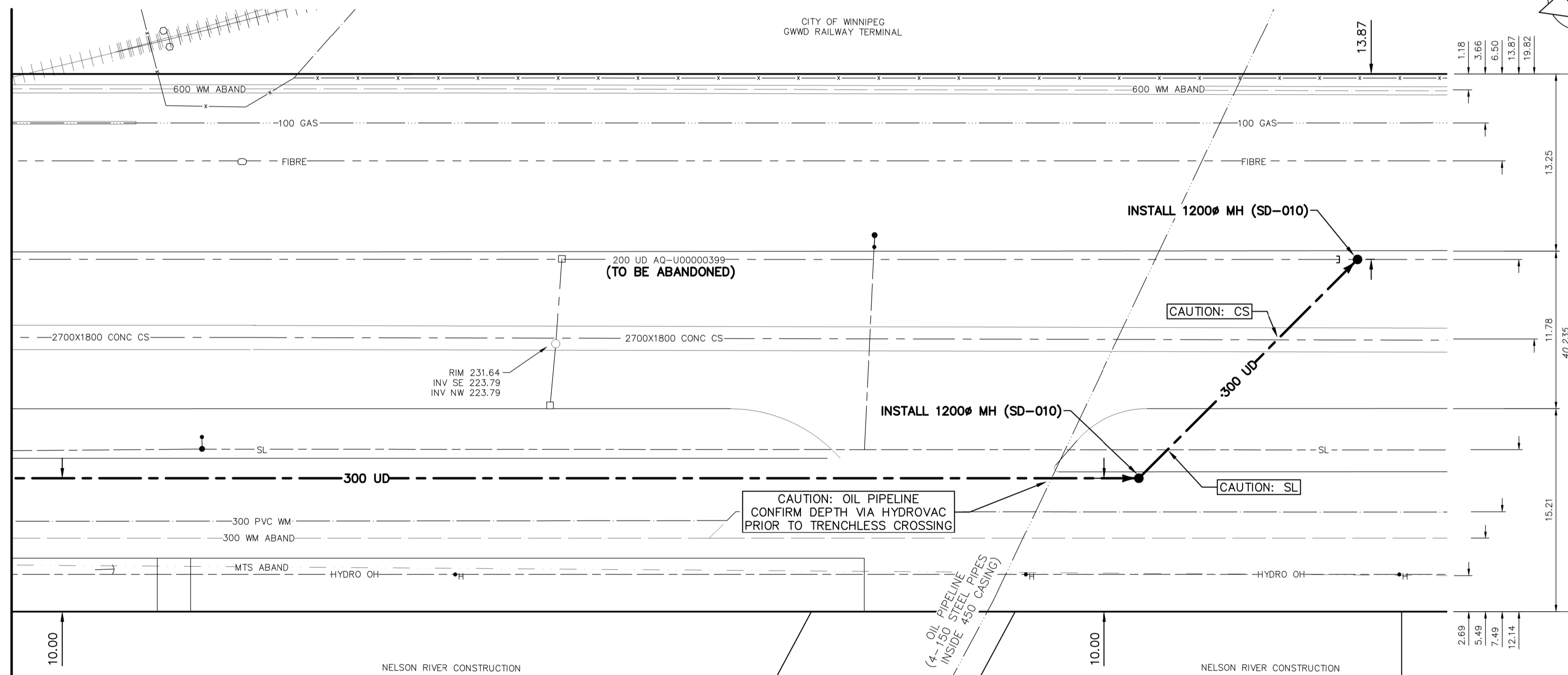


NOTE: CHAINAGES SHOWN ARE ALONG E_C OF DAWSON RD N

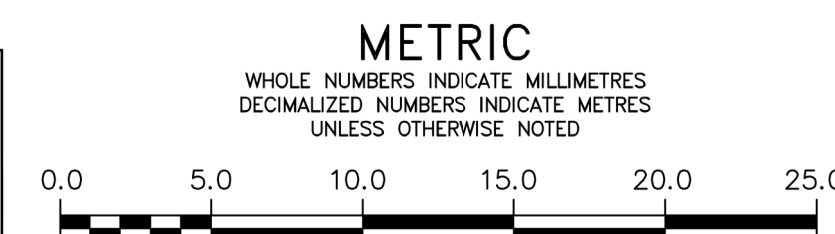
DAWSON ROAD N

CITY OF WINNIPEG
GWD RAILWAY TERMINAL

MATCHLINE 2+10.00
SEE DWG 1-0751N-C0008-001



FOR INDEX SEE DWG
1-0751A-D0007-001



LOCATION APPROVED UNDERGROUND STRUCTURES	
SUPV. U/G STRUCTURES COMMITTEE	DATE
NOTE: LOCATION OF UNDERGROUND STRUCTURES AS SHOWN ARE BASED ON THE BEST INFORMATION AVAILABLE BUT NO GUARANTEE IS GIVEN THAT ALL EXISTING UTILITIES ARE SHOWN OR THAT THE GIVEN LOCATIONS ARE EXACT. CONFIRMATION OF EXISTENCE AND EXACT LOCATION OF ALL SERVICES MUST BE OBTAINED FROM THE INDIVIDUAL UTILITIES BEFORE PROCEEDING WITH CONSTRUCTION.	

VERTICAL DATUM: CGVD28 (HT2.0 Geoid)			
HORIZONTAL DATUM: NAD83 (June 1990), Zone 14			
NO.	ISSUED FOR CONSTRUCTION	2024/09/23	ADB
NO.	REVISIONS	YYYY/MM/DD	BY

DESIGNED BY	ADB	CHECKED BY	JF
DRAWN BY	DML	APPROVED BY	ADB
SCALE:	HORIZONTAL: 1:250 VERTICAL: 1:50		
DATE	SEPTEMBER 23, 2024	DATE	SEPTEMBER 23, 2024

ENGINEER'S SEAL

CONSULTANT DRAWING NUMBER

THE CITY OF WINNIPEG
WATER AND WASTE DEPARTMENT
ENGINEERING SERVICES DIVISION

BRANCH 1 AQUEDUCT
UNDERDRAIN OUTFALL REPAIRS
DAWSON ROAD N
10m N OF MESSIER STREET TO
275m S OF PLINGUET STREET

SHEET 12 OF 17
CITY DRAWING NUMBER
1-0751N-C0009-001