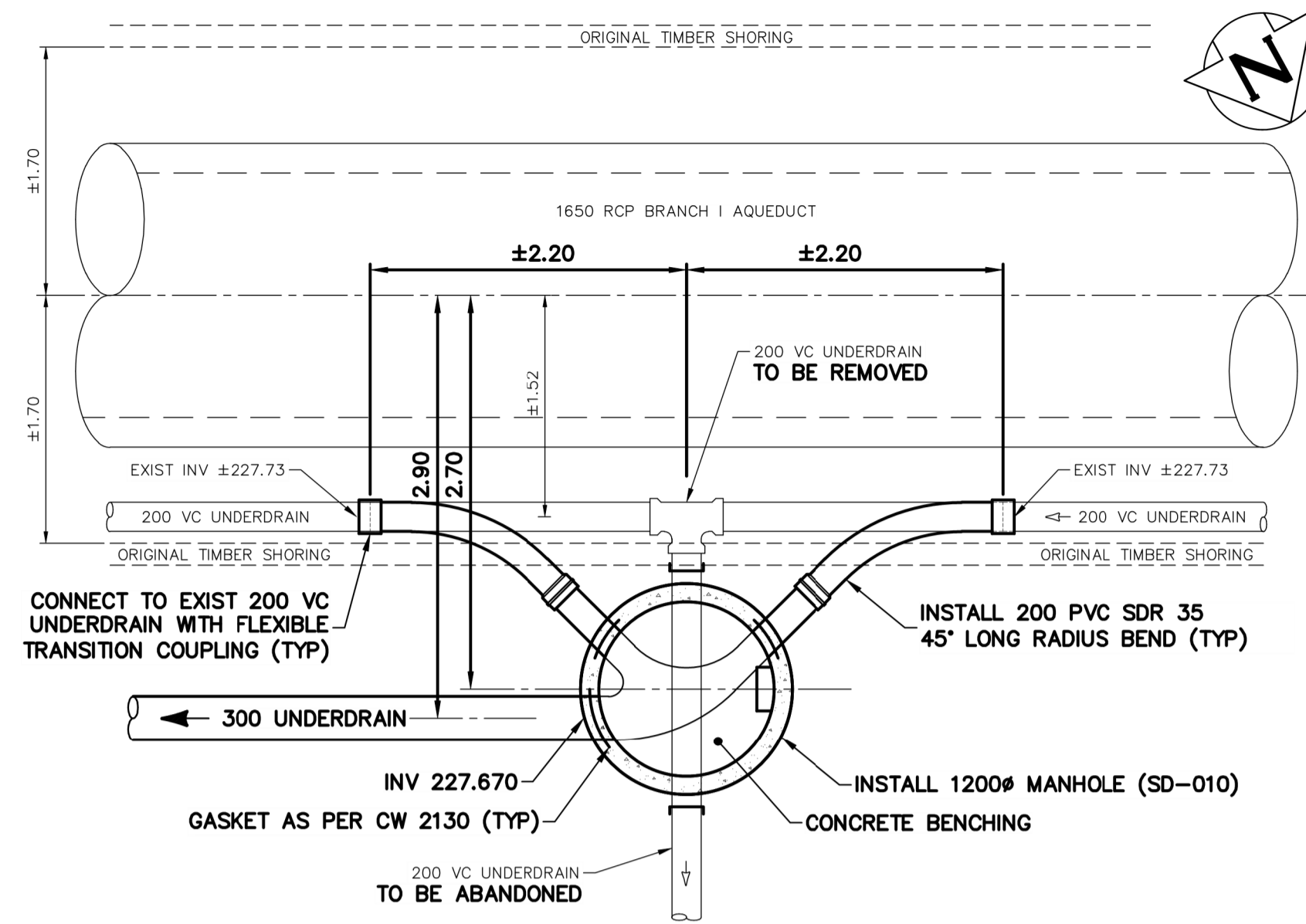
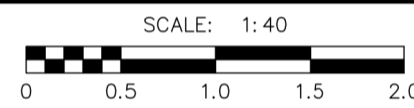
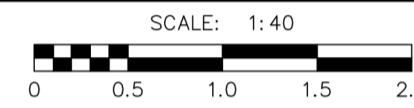


PLAN - MANHOLE UMH119-0137 REPLACEMENT

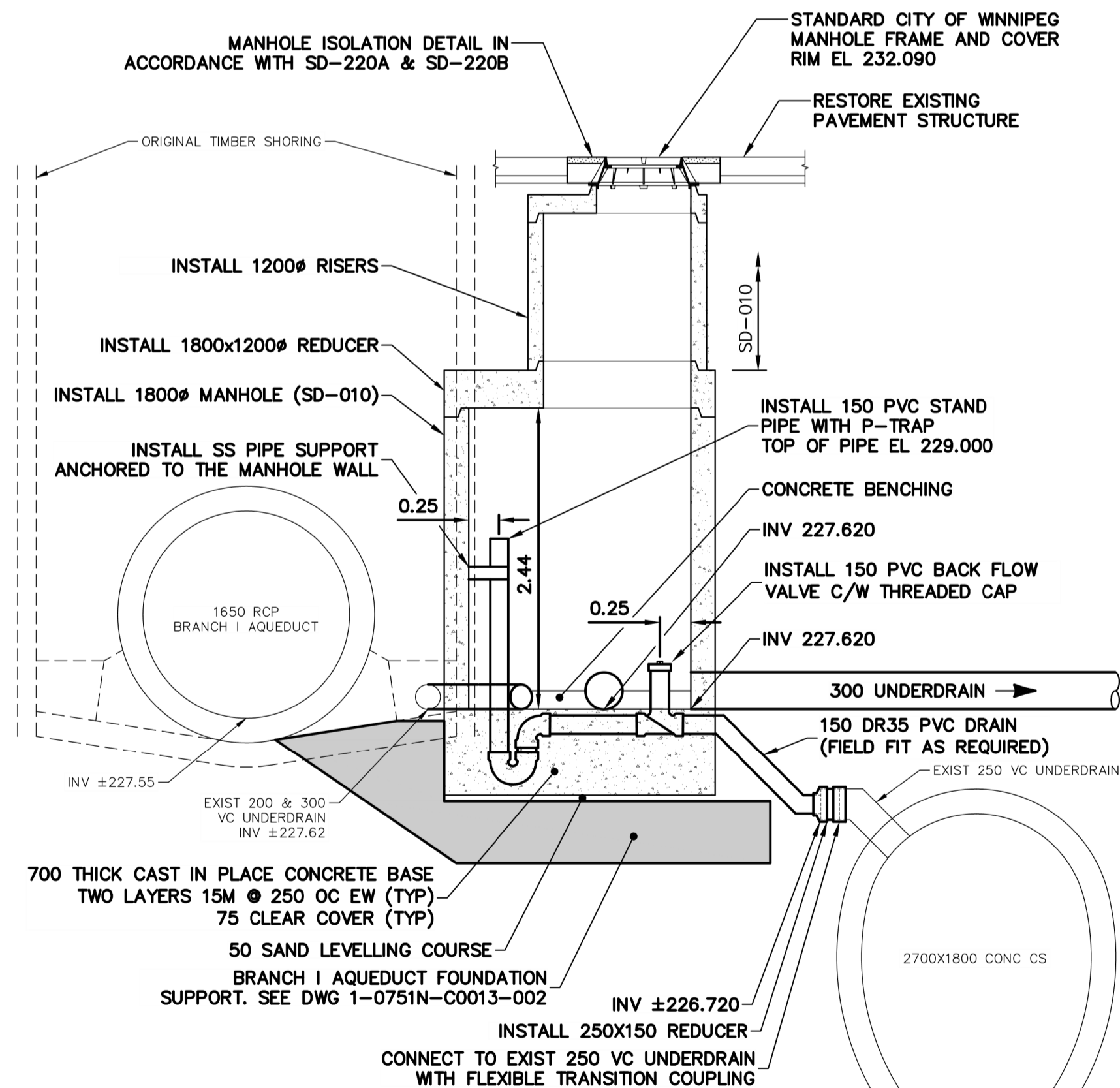


PLAN - MANHOLE UMH119-0114 REPLACEMENT

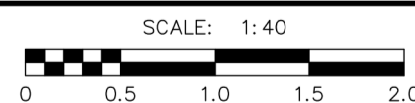


CONSTRUCTION NOTES:

- ALL WORK IN CLOSE PROXIMITY TO THE BRANCH I AQUEDUCT SHALL BE COMPLETED WITH AN ABUNDANCE OF CAUTION AND IN ACCORDANCE WITH THE SPECIFICATIONS.
- EXCAVATIONS TO BE COMPLETED IN ACCORDANCE WITH BRANCH I AQUEDUCT EXCAVATION DETAIL ON DWG 1-0751N-C0013-002. BRANCH I AQUEDUCT FOUNDATION STABILIZATION REQUIRED FOR THE CONSTRUCTION OF BOTH MANHOLES.
- IF ORIGINAL TIMBER SHORING PLANKS ARE ENCOUNTERED THEY SHALL NOT BE PUSHED DOWN OR PULLED UP AS THIS COULD LEAD TO MOVEMENT OF THE BRANCH I AQUEDUCT. ORIGINAL SHORING SHALL BE CAREFULLY EXPOSED AND CUT OFF.
- EXCAVATIONS SHALL BE BACKFILLED TO CLASS 2 STANDARDS WITHIN 5 m OF THE BRANCH I AQUEDUCT WHERE WITHIN 1 m OF PAVEMENT. OTHER AREAS WITHIN 5 m OF THE BRANCH I AQUEDUCT MAY BE BACKFILLED TO CLASS 2 OR CLASS 4 STANDARDS.



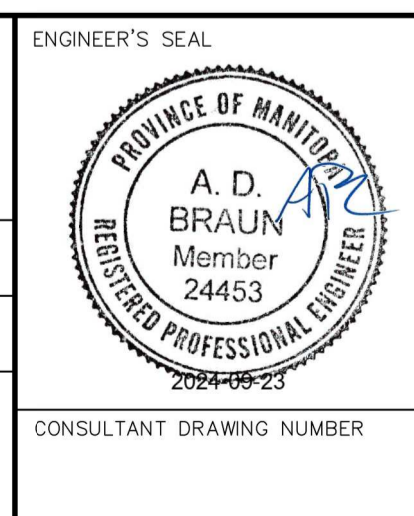
SECTION - MANHOLE UMH119-0137 REPLACEMENT



METRIC
WHOLE NUMBERS INDICATE MILLIMETRES
DECIMALIZED NUMBERS INDICATE METRES
UNLESS OTHERWISE NOTED

LOCATION APPROVED UNDERGROUND STRUCTURES		VERTICAL DATUM: CGVD28 (HT2.0 Geoid)	
HORIZONTAL DATUM: NAD83 (June 1990), Zone 14			
SUPV. U/G STRUCTURES COMMITTEE	DATE		
NOTE:	LOCATION OF UNDERGROUND STRUCTURES AS SHOWN ARE BASED ON THE BEST INFORMATION AVAILABLE BUT NO GUARANTEE IS GIVEN THAT ALL EXISTING UTILITIES ARE SHOWN OR THAT THE GIVEN LOCATIONS ARE EXACT. CONFIRMATION OF EXISTENCE AND EXACT LOCATION OF ALL SERVICES MUST BE OBTAINED FROM THE INDIVIDUAL UTILITIES BEFORE PROCEEDING WITH CONSTRUCTION.		
NO.	ISSUED FOR CONSTRUCTION	2024/09/23	ADB
	REVISIONS	YYYY/MM/DD	BY

Stantec		ENGINEER'S SEAL	
DESIGNED BY	ADB	CHECKED BY	JF
DRAWN BY	DML	APPROVED BY	ADB
SCALE:	HORIZONTAL 1:250 VERTICAL 1:50		
DATE	SEPTEMBER 23, 2024	DATE	SEPTEMBER 23, 2024
PLOT DATE: 2024 09 23		TENDER NUMBER: 694-2024 CONTRACT NUMBER: N/A	



THE CITY OF WINNIPEG
WATER AND WASTE DEPARTMENT
ENGINEERING SERVICES DIVISION

BRANCH I AQUEDUCT
UNDERDRAIN OUTFALL REPAIRS
BRANCH I AQUEDUCT
DAWSON RD N UNDERDRAIN CROSS CONNECTION
DETAILS

SHEET 13 OF 17
CITY DRAWING NUMBER
1-0751N-C0010-001

FOR INDEX SEE DWG 1-0751A-D0007-001