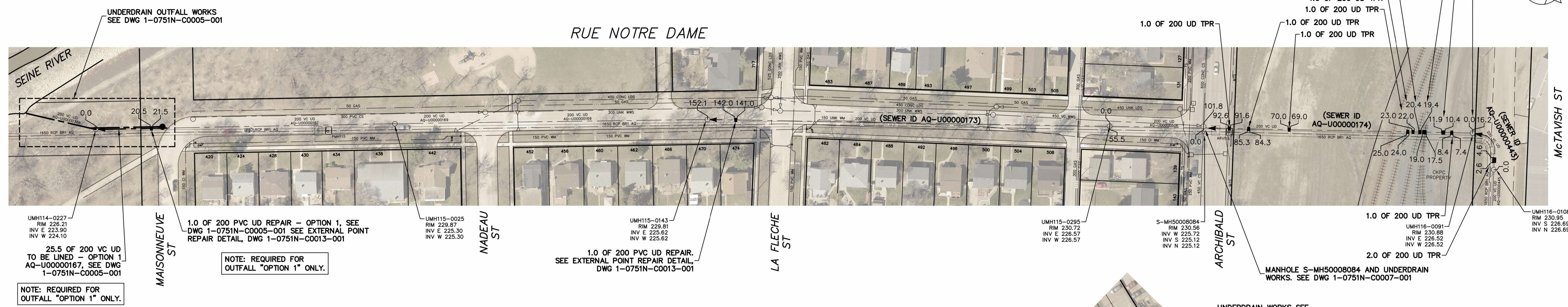


NOTE: UMH116-0091 LOCATED ON CPKC PROPERTY. ACCESS AGREEMENT REQUIRED (BY CITY).
COORDINATE ACCESS WITH CONTRACT ADMINISTRATOR PRIOR TO COMMENCEMENT OF TRENCHLESS REPAIR WORK.



UMH114-0227
RIM 226.21
INV E 223.90
INV W 224.10

25.5 OF 200 VC UD
TO BE LINED - OPTION 1
AQ-U0000167, SEE DWG
1-0751N-C0005-001

NOTE: REQUIRED FOR
OUTFALL "OPTION 1" ONLY.

1.0 OF 200 PVC UD REPAIR - OPTION 1, SEE
DWG 1-0751N-C0005-001 SEE EXTERNAL POINT
REPAIR DETAIL, DWG 1-0751N-C0013-001

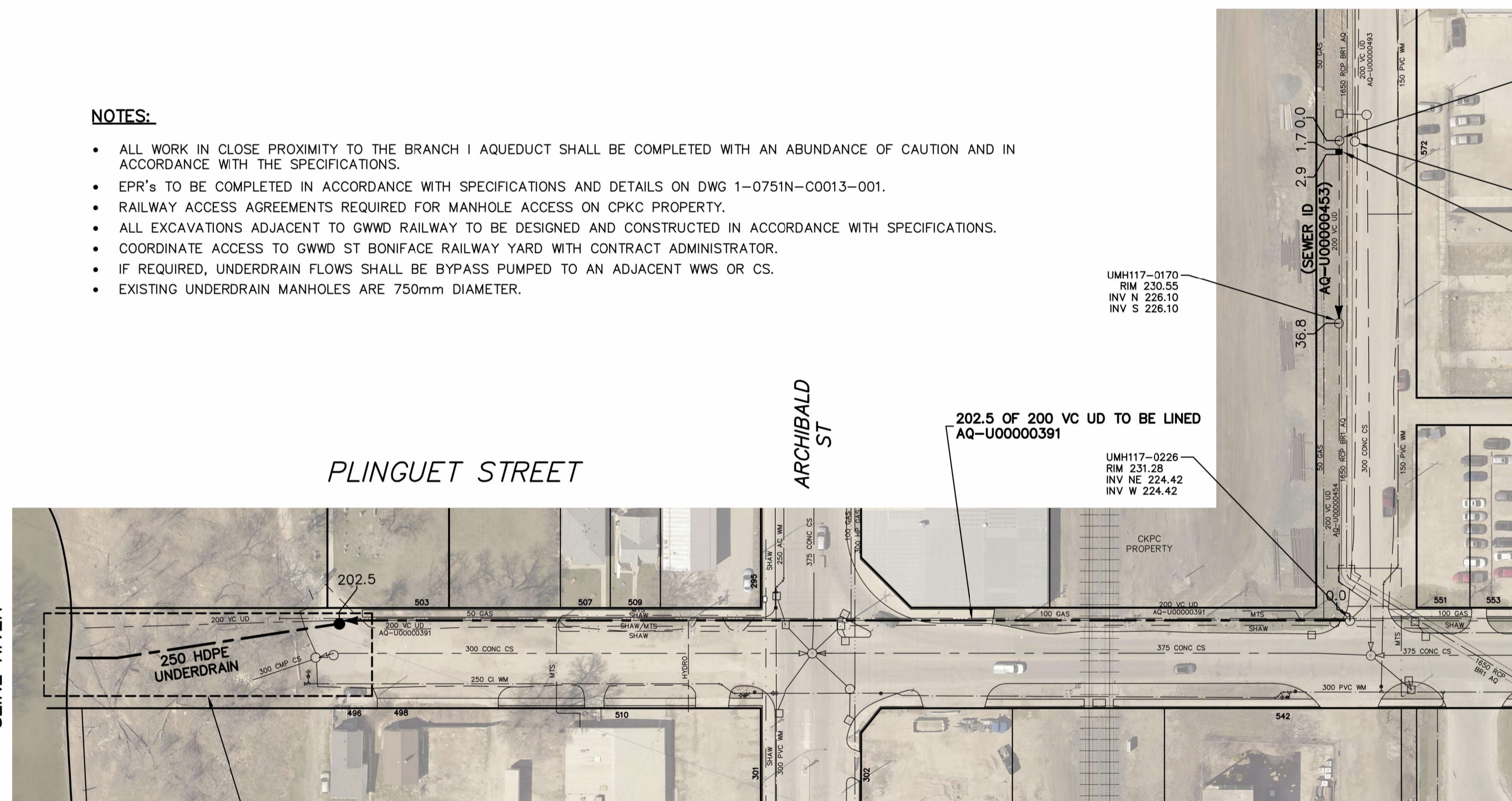
NOTE: REQUIRED FOR
OUTFALL "OPTION 1" ONLY.

1.0 OF 200 PVC UD REPAIR.
SEE EXTERNAL POINT REPAIR DETAIL,
DWG 1-0751N-C0013-001

MANHOLE S-MH50008084 AND UNDERDRAIN
WORKS. SEE DWG 1-0751N-C0007-001

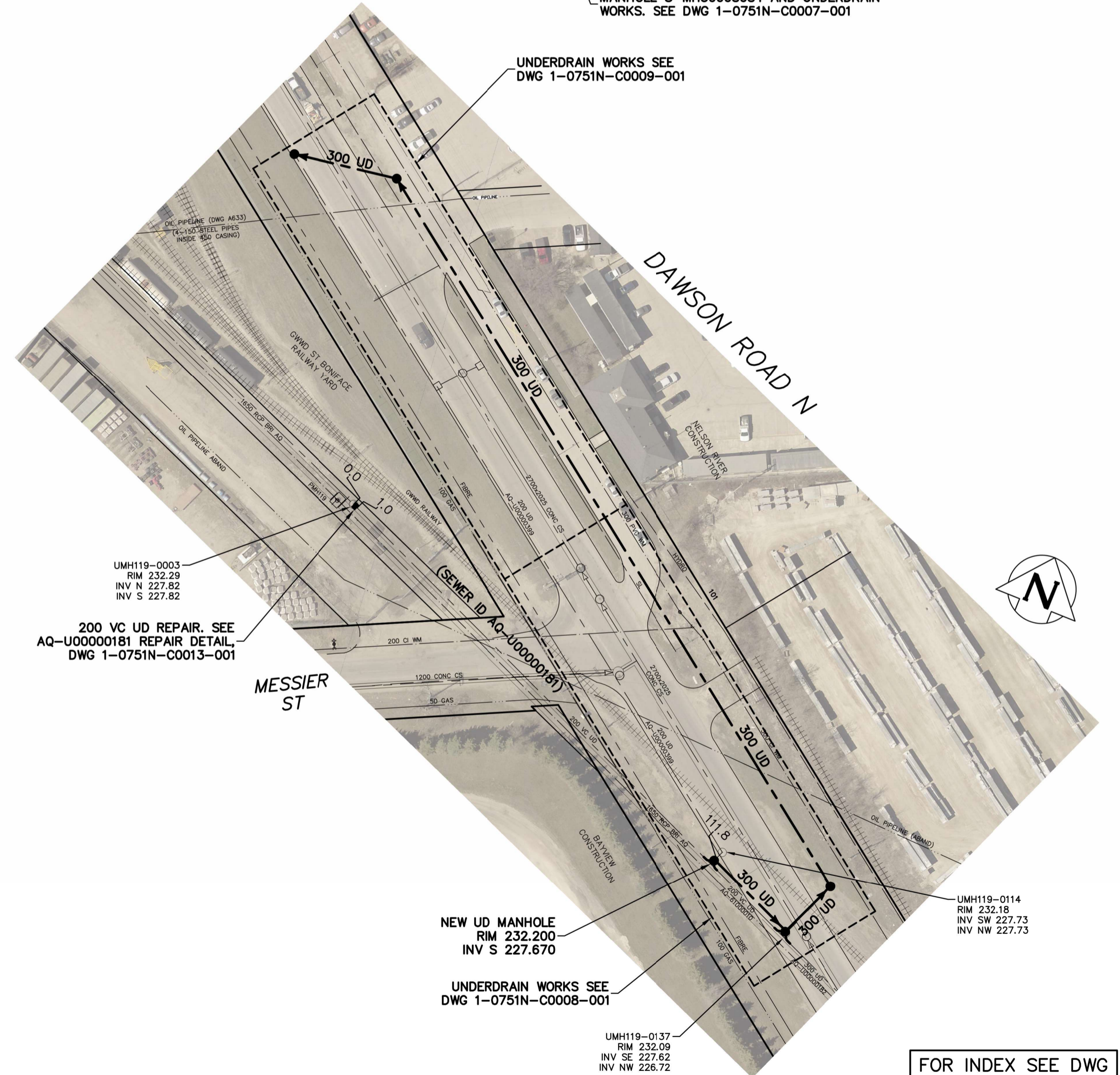
NOTES:

- ALL WORK IN CLOSE PROXIMITY TO THE BRANCH I AQUEDUCT SHALL BE COMPLETED WITH AN ABUNDANCE OF CAUTION AND IN ACCORDANCE WITH THE SPECIFICATIONS.
- EPR's TO BE COMPLETED IN ACCORDANCE WITH SPECIFICATIONS AND DETAILS ON DWG 1-0751N-C0013-001.
- RAILWAY ACCESS AGREEMENTS REQUIRED FOR MANHOLE ACCESS ON CPKC PROPERTY.
- ALL EXCAVATIONS ADJACENT TO GWWD RAILWAY TO BE DESIGNED AND CONSTRUCTED IN ACCORDANCE WITH SPECIFICATIONS.
- COORDINATE ACCESS TO GWWD ST BONIFACE RAILWAY YARD WITH CONTRACT ADMINISTRATOR.
- IF REQUIRED, UNDERDRAIN FLOWS SHALL BE BYPASS PUMPED TO AN ADJACENT WWS OR CS.
- EXISTING UNDERDRAIN MANHOLES ARE 750mm DIAMETER.



202.5 OF 200 VC UD TO BE LINED
AQ-U00000391

1.25 OF 200 UD TPR

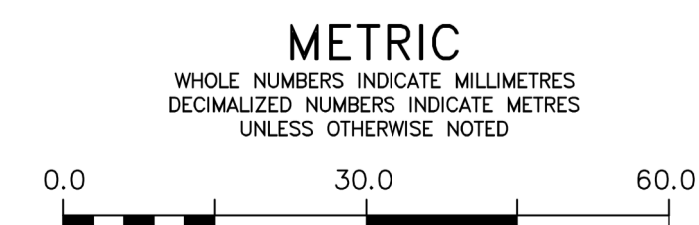


200 VC UD REPAIR. SEE
AQ-U00000181 REPAIR DETAIL,
DWG 1-0751N-C0013-001

NEW UD MANHOLE
RIM 232.200
INV S 227.670

UNDERDRAIN WORKS SEE
DWG 1-0751N-C0008-001

FOR INDEX SEE DWG
1-0751A-D0007-001



LOCATION APPROVED UNDERGROUND STRUCTURES		VERTICAL DATUM: CGVD28 (HT2.0 Geoid)	
SUPV. U/G STRUCTURES COMMITTEE		HORIZONTAL DATUM: NAD83 (June 1990), Zone 14	
DATE			
NOTE:	LOCATION OF UNDERGROUND STRUCTURES AS SHOWN ARE BASED ON THE BEST INFORMATION AVAILABLE BUT NO GUARANTEE IS GIVEN THAT ALL EXISTING UTILITIES ARE SHOWN OR THAT THE GIVEN LOCATIONS ARE EXACT. CONFIRMATION OF EXISTENCE AND EXACT LOCATION OF ALL SERVICES MUST BE OBTAINED FROM THE INDIVIDUAL UTILITIES BEFORE PROCEEDING WITH CONSTRUCTION.		
NO.	ISSUED FOR CONSTRUCTION	2024/09/23	ADB
	REVISIONS	YYYY/MM/DD	BY

DESIGNED BY	ADB	CHECKED BY	JF
DRAWN BY	DML	APPROVED BY	ADB
SCALE:	HORIZONTAL: 1:750		
VERTICAL	RELEASED FOR CONSTRUCTION		
DATE	SEPTEMBER 23, 2024	DATE	SEPTEMBER 23, 2024

ENGINEER'S SEAL

CONSULTANT DRAWING NUMBER

THE CITY OF WINNIPEG
WATER AND WASTE DEPARTMENT
ENGINEERING SERVICES DIVISION

BRANCH I AQUEDUCT
UNDERDRAIN OUTFALL REPAIRS
BRANCH I AQUEDUCT
UNDERDRAIN REPAIRS
PLAN

SHEET 15 OF 17
CITY DRAWING NUMBER
1-0751N-C0012-001