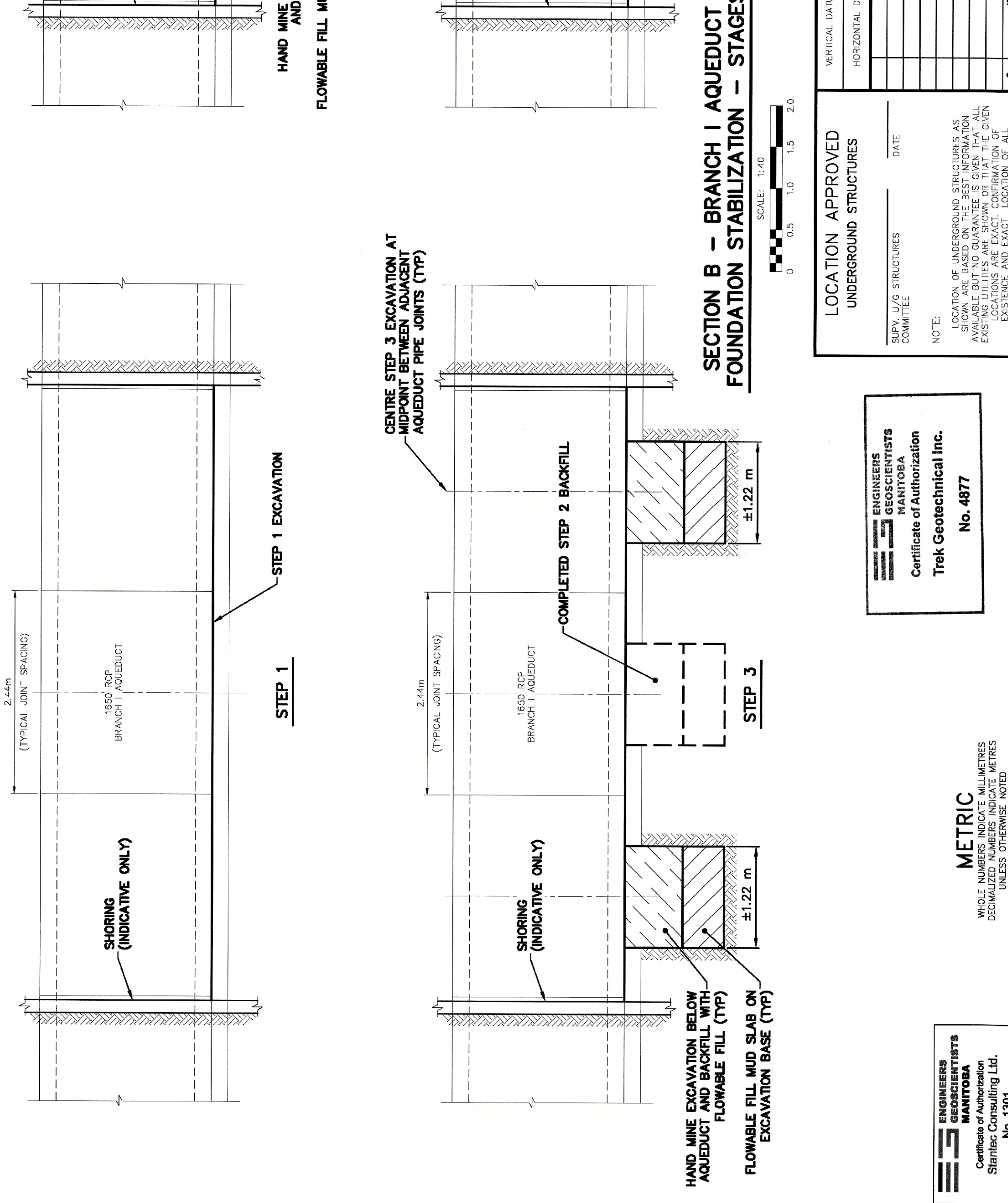


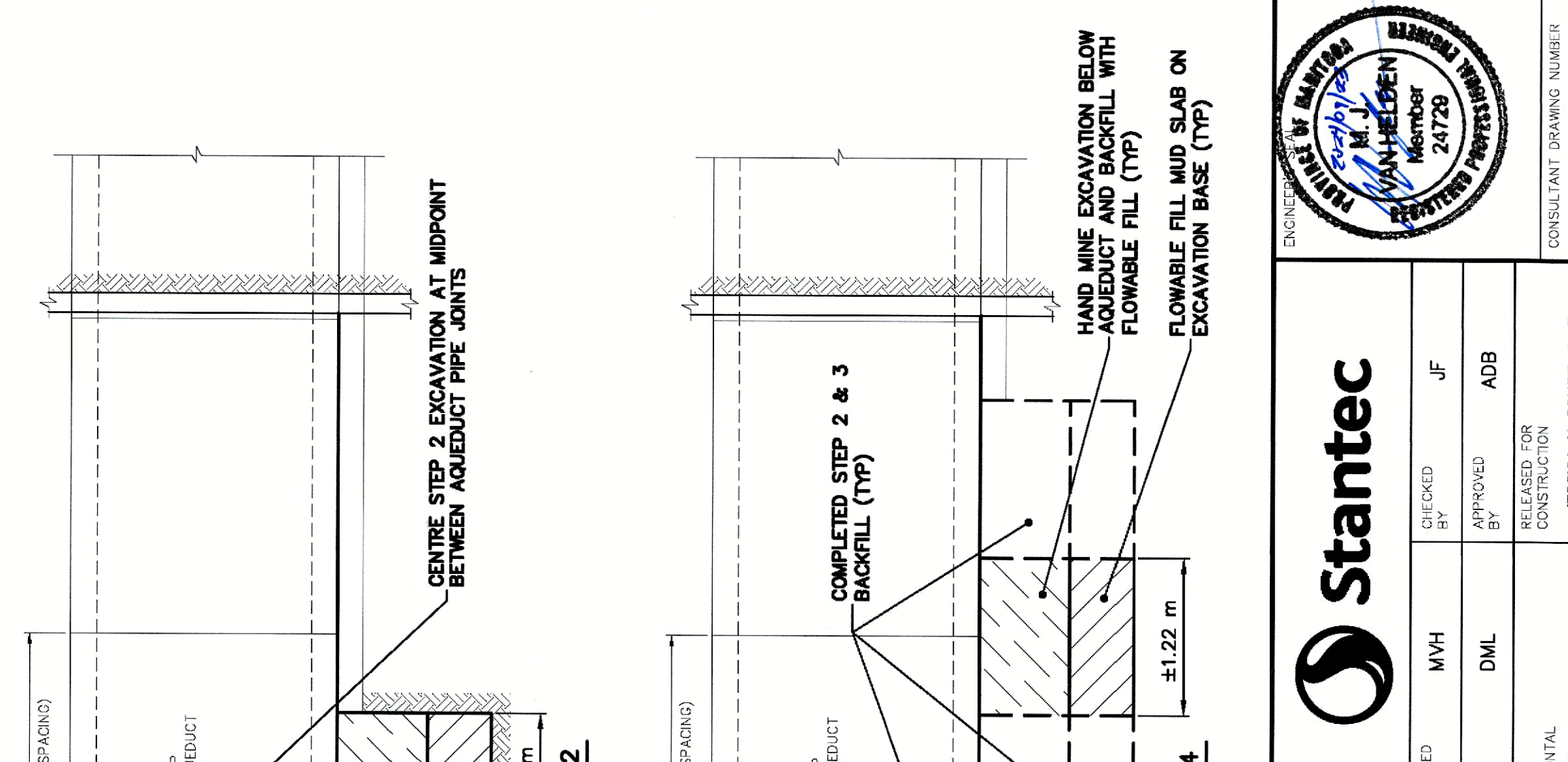
**BRANCH I AQUEDUCT EXCAVATION AND FOUNDATION STABILIZATION PLAN FOR UMH119-0114 AND UMH119-0137**

SCALE: 1:40



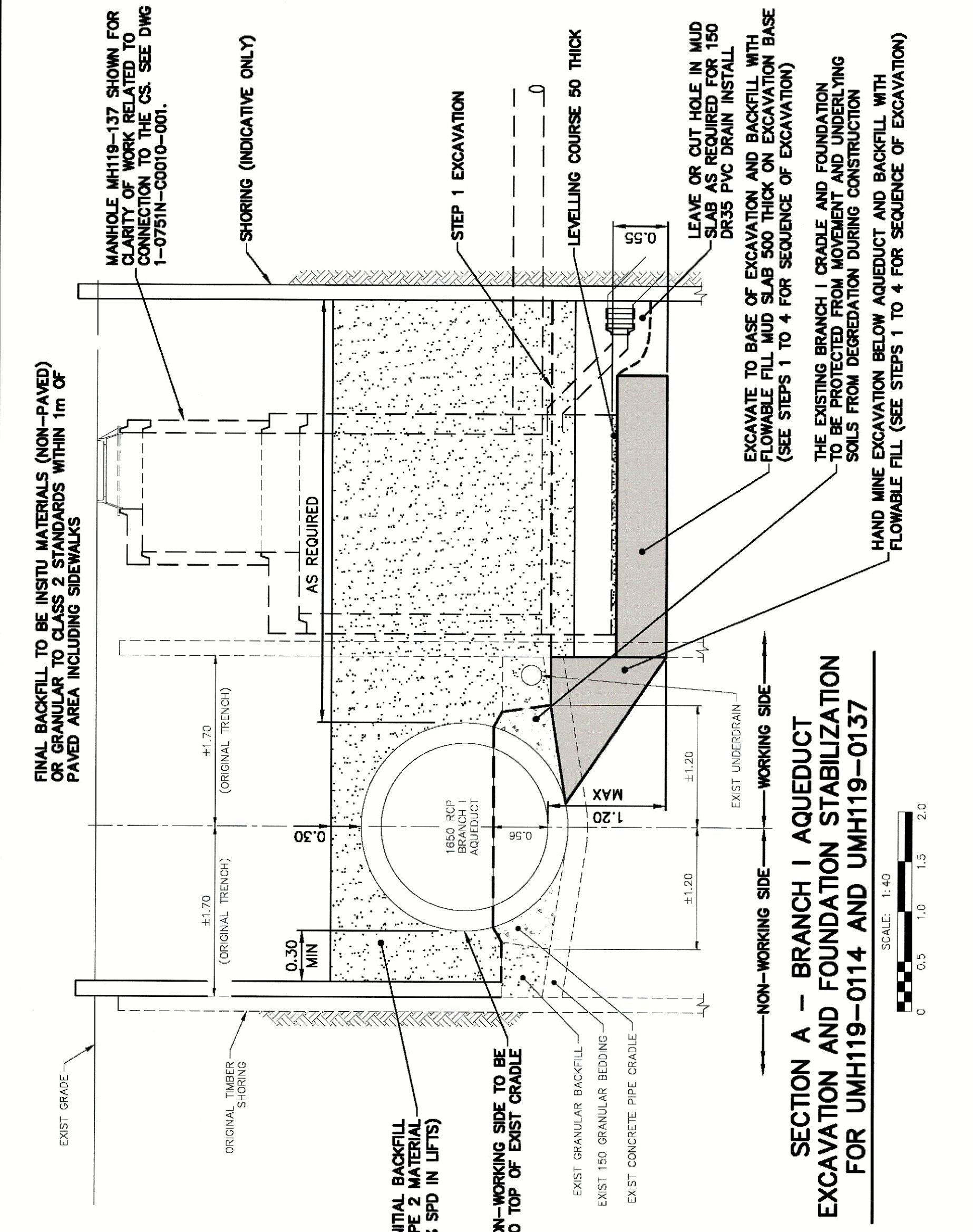
**SECTION A - BRANCH I AQUEDUCT EXCAVATION AND FOUNDATION STABILIZATION FOR UMH119-0114 AND UMH119-0137**

SCALE: 1:40



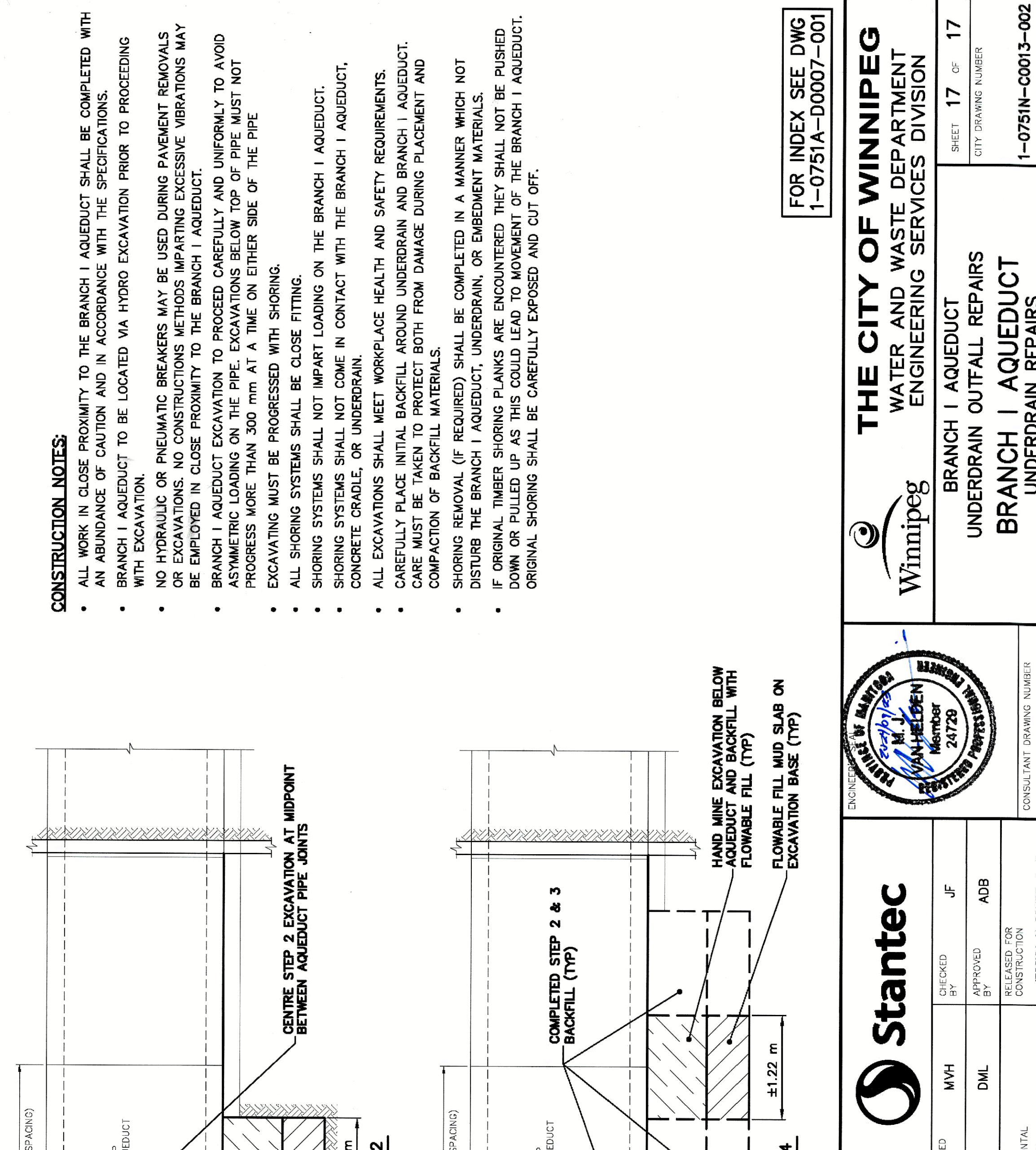
**SECTION B - BRANCH I AQUEDUCT FOUNDATION STABILIZATION - STAGES**

SCALE: 1:40



**SECTION A - BRANCH I AQUEDUCT EXCAVATION AND FOUNDATION STABILIZATION FOR UMH119-0114 AND UMH119-0137**

SCALE: 1:40



- CONSTRUCTION NOTES:**
- ALL WORK IN CLOSE PROXIMITY TO THE BRANCH I AQUEDUCT SHALL BE COMPLETED WITH AN ABUNDANCE OF CAUTION AND IN ACCORDANCE WITH THE SPECIFICATIONS.
  - BRANCH I AQUEDUCT TO BE LOCATED VIA HYDRO EXCAVATION PRIOR TO PROCEEDING WITH EXCAVATION.
  - NO HYDRAULIC OR PNEUMATIC BREAKERS MAY BE USED DURING PAVEMENT REMOVALS OR EXCAVATIONS. NO CONSTRUCTION METHODS IMPARTING EXCESSIVE VIBRATIONS MAY BE EMPLOYED IN CLOSE PROXIMITY TO THE BRANCH I AQUEDUCT.
  - BRANCH I AQUEDUCT EXCAVATION TO PROCEED CAREFULLY AND UNIFORMLY TO AVOID ASYMMETRIC LOADING ON THE PIPE. EXCAVATIONS BELOW TOP OF PIPE MUST NOT PROGRESS MORE THAN 300 mm AT A TIME ON EITHER SIDE OF THE PIPE.
  - EXCAVATING MUST BE PROGRESSED WITH SHORING.
  - ALL SHORING SYSTEMS SHALL BE CLOSE FITTING.
  - SHORING SYSTEMS SHALL NOT IMPART LOADING ON THE BRANCH I AQUEDUCT.
  - SHORING SYSTEMS SHALL NOT COME IN CONTACT WITH THE BRANCH I AQUEDUCT, CONCRETE CRADLE, OR UNDERDRAIN.
  - ALL EXCAVATIONS SHALL MEET WORKPLACE HEALTH AND SAFETY REQUIREMENTS.
  - CAREFULLY PLACE INITIAL BACKFILL AROUND UNDERDRAIN AND BRANCH I AQUEDUCT. CARE MUST BE TAKEN TO PROTECT BOTH FROM DAMAGE DURING PLACEMENT AND COMPACTION OF BACKFILL MATERIALS.
  - SHORING REMOVAL (IF REQUIRED) SHALL BE COMPLETED IN A MANNER WHICH NOT DISTURB THE BRANCH I AQUEDUCT, UNDERDRAIN, OR EMBEDMENT MATERIALS.
  - IF ORIGINAL TIMBER SHORING PLANKS ARE ENCOUNTERED THEY SHALL NOT BE PUSHED DOWN OR PULLED UP AS THIS COULD LEAD TO MOVEMENT OF THE BRANCH I AQUEDUCT. ORIGINAL SHORING SHALL BE CAREFULLY EXPOSED AND CUT OFF.

FOR INDEX SEE DWG 1-0751A-D0007-001

**THE CITY OF WINNIPEG**  
 WATER AND WASTE DEPARTMENT  
 ENGINEERING SERVICES DIVISION

BRANCH I AQUEDUCT  
 UNDERDRAIN OUTFALL REPAIRS  
 BRANCH I AQUEDUCT  
 UNDERDRAIN REPAIRS  
 DETAILS II

SHEET 17 OF 17  
 CITY DRAWING NUMBER  
 1-0751A-C0013-002

**Stantec**

DESIGNED BY: MVH  
 DRAWN BY: DML  
 CHECKED BY: JF  
 APPROVED BY: ADB

RELEASED FOR CONSTRUCTION  
 JESSICA MCCORMIE, P. Eng.  
 DATE: SEPTEMBER 23, 2024

LOCATION APPROVED  
 UNDERGROUND STRUCTURES

SUPPLY STRUCTURES COMMITTEE

DATE

NOTE:  
 LOCATION OF UNDERGROUND STRUCTURES AS SHOWN ON THIS PLAN IS BASED ON RECORDS AS AVAILABLE BUT NO GUARANTEE IS GIVEN THAT ALL EXISTENCE AND EXACT LOCATION OF ALL UTILITIES BEFORE PROCEEDING WITH CONSTRUCTION.

ENGINEERS  
 GEOTECHNICALS  
 MANITOBA  
 Certificate of Authorization  
 Trek Geotechnical Inc.  
 No. 4877

ENGINEERS  
 GEOTECHNICALS  
 MANITOBA  
 Certificate of Authorization  
 Stantec Consulting Ltd.  
 No. 1301

**METRIC**  
 WHOLE NUMBERS INDICATE MILLIMETRES  
 DECIMALIZED NUMBERS INDICATE METRES  
 UNLESS OTHERWISE NOTED

LOCATION APPROVED  
 UNDERGROUND STRUCTURES

SUPPLY STRUCTURES COMMITTEE

DATE

NOTE:  
 LOCATION OF UNDERGROUND STRUCTURES AS SHOWN ON THIS PLAN IS BASED ON RECORDS AS AVAILABLE BUT NO GUARANTEE IS GIVEN THAT ALL EXISTENCE AND EXACT LOCATION OF ALL UTILITIES BEFORE PROCEEDING WITH CONSTRUCTION.