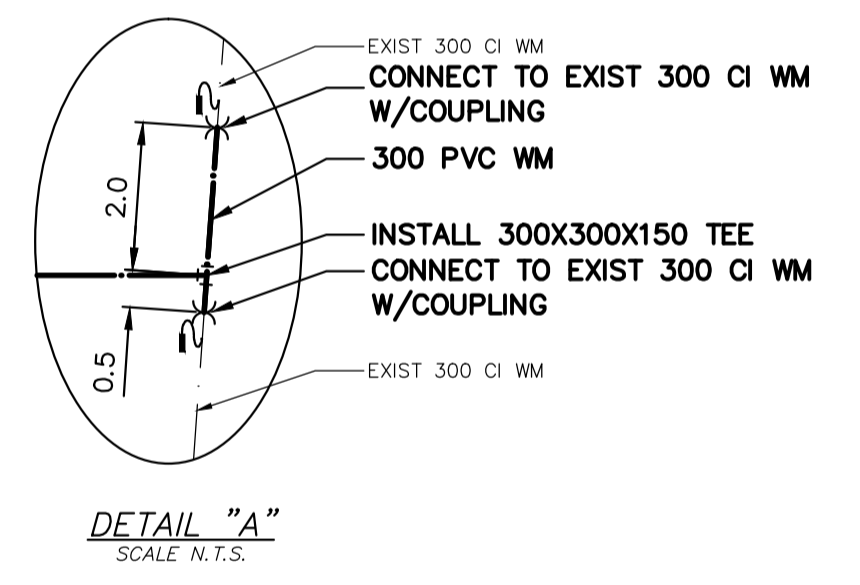
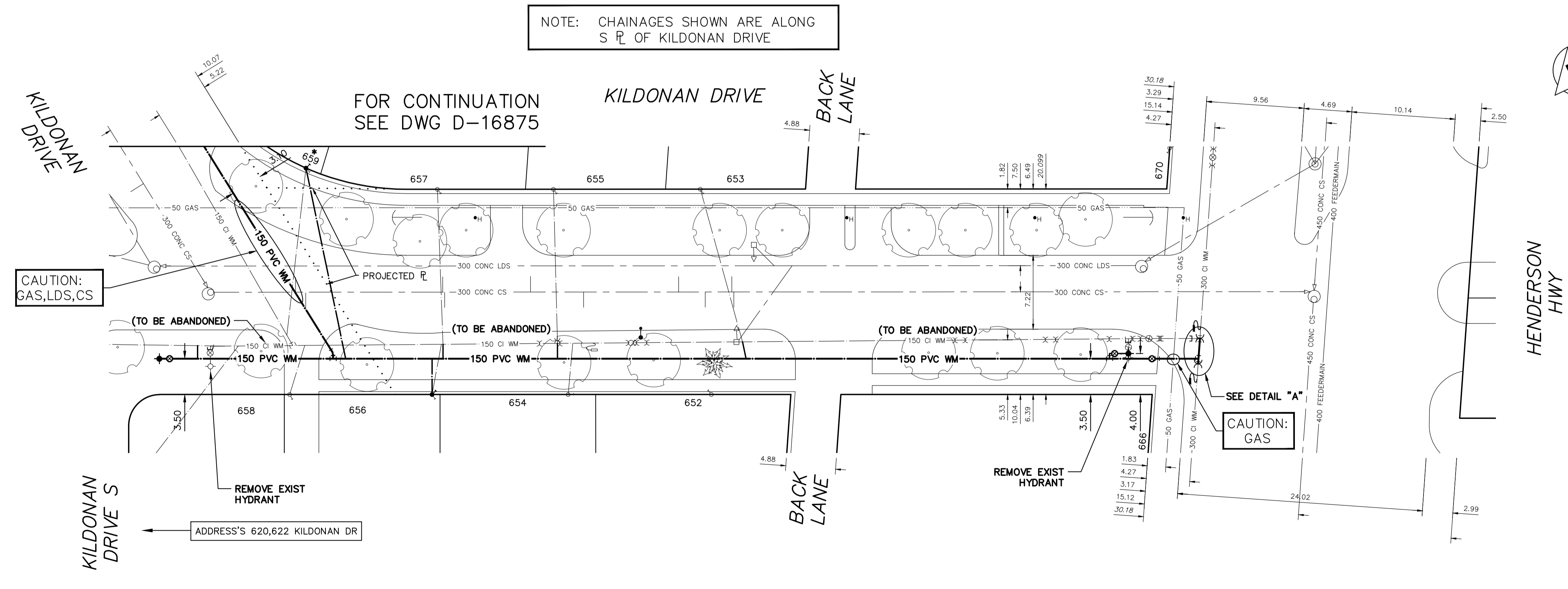


WATER SERVICE INFORMATION

ADDRESS	SIZE (mm) MATERIAL (STREET)	SIZE (mm) MATERIAL (PROP.)	SHORT & LONG MEASUREMENT	CORP LOCATION	REMARKS
666 HENDERSON HIGHWAY	12 LEAD	12 LEAD	3.64 SNL HSE	0.7 N OS S/C	OUTSIDE LIMITS SERVICED OFF HENDERSON HWY
670 HENDERSON HIGHWAY	16 CU	12	1.89 SSL HSE	1.5 N OF S/C	OUTSIDE LIMITS SERVICED OFF HENDERSON HWY
652 KILDONAN DRIVE	-	12	0.91 WEL HSE	-	RECONNECT SERVICE
653 KILDONAN DRIVE	12 CU	12	4.010>NNL HENDERSON DR	4.2 E OF S/C	RECONNECT SERVICE
654 KILDONAN DRIVE	12 CU	12	43.151 WML HENDERSON HWY	-	RECONNECT SERVICE
655 KILDONAN DRIVE	12 CU	12	45.658 WML HENDERSON HWY	0.5 E OF S/C	RECONNECT SERVICE
656 KILDONAN DRIVE	12 CU	12	57.186 WML HENDERSON HWY	0.4 E OF S/C	RECONNECT SERVICE
657 KILDONAN DRIVE	20 CU	20	60.029 WML HENDERSON HWY	0.9 E OF S/C	RECONNECT SERVICE
658 KILDONAN DRIVE	12 CU	12	1.09 WEL HSE	1.8 W OF S/C	RENEW TO P W/20 CU
659 KILDONAN DRIVE	12 CU	12	70.492 WML HENDERSON HWY	0.5 E OF S/C	RECONNECT SERVICE
659 KILDONAN DRIVE	12 CU	12	71.395 WML HENDERSON HWY	1.4 E OF S/C	RECONNECT SERVICE
659 KILDONAN DRIVE	12 CU	12	84.417 WML HENDERSON HWY	1.8 W OF S/C	RENEW TO P W/20 CU
659 KILDONAN DRIVE	12 CU	12	0.34 WEL HSE	-	RECONNECT SERVICE
659 KILDONAN DRIVE	12 CU	12	100.889 WML HENDERSON HWY	-	RECONNECT SERVICE

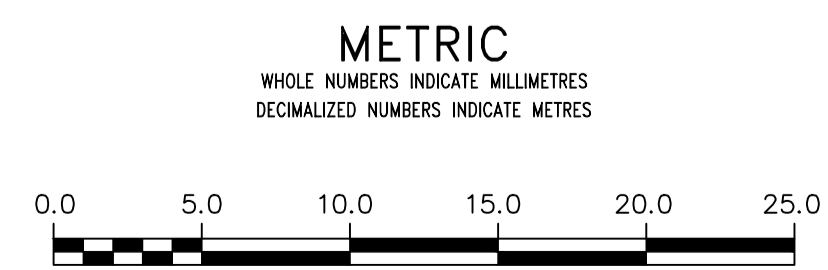
* SERVICES TO BE RENEWED TO P. ALL OTHERS TO BE RECONNECTED

NOTE: CHAINAGES SHOWN ARE ALONG S R OF KILDONAN DRIVE



FOR INDEX SEE D-16868

NOTE: ALL VALVES TO BE INSTALLED COUNTERCLOCKWISE TO CLOSE



<p>WARNING</p> <p>IF POWER EQUIPMENT OR EXPLOSIVES ARE TO BE USED FOR EXCAVATION ON THIS PROJECT THE CONTRACTOR MUST:</p> <p>1) NOTIFY THE GAS COMPANY OF THE PROPOSED LOCATION OF EXCAVATION.</p> <p>2) TAKE PRECAUTION TO AVOID DAMAGE TO GAS COMPANY INSTALLATIONS.</p> <p>SEE PROVINCIAL REGULATION 210/72 FOR DETAILS</p>	<p>LOCATION APPROVED UNDERGROUND STRUCTURES</p> <p>SUPV. U/G STRUCTURES COMMITTEE DATE</p> <p>NOTE: LOCATION OF UNDERGROUND STRUCTURES AS SHOWN ARE BASED ON THE BEST INFORMATION AVAILABLE BUT NO GUARANTEE IS GIVEN THAT ALL EXISTING UTILITIES ARE SHOWN OR THAT THE GIVEN LOCATIONS ARE EXACT. CONFIRMATION OF EXISTENCE AND EXACT LOCATION OF ALL SERVICES MUST BE OBTAINED FROM THE INDIVIDUAL UTILITIES BEFORE PROCEEDING WITH CONSTRUCTION.</p>	<p>VERTICAL DATUM: CGVD28 (HT2.0 Geoid)</p> <p>HORIZONTAL DATUM: NAD83 (June 1990), Zone 14</p>		<p>ENGINEER'S SEAL</p> <p>PROVINCE OF MANITOBA</p> <p>S.R.J. COUNROYER</p> <p>Member 22899</p> <p>2024-04-24</p> <p>REGISTERED PROFESSIONAL ENGINEER</p> <p>Digitally signed by S.R.J. Cournoyer, P. Eng</p> <p>CONSULTANT DRAWING NUMBER</p>	<p>THE CITY OF WINNIPEG</p> <p>WATER AND WASTE DEPARTMENT</p> <p>ENGINEERING DIVISION</p> <p>2024 WATER MAIN RENEWALS</p> <p>CONTRACT #5</p> <p>KILDONAN DRIVE</p> <p>HENDERSON HIGHWAY TO</p> <p>KILDONAN DRIVE SOUTH</p>	<p>SHEET 7 OF 13</p> <p>CITY DRAWING NUMBER</p> <p>D-16874</p>
		<p>DESIGNED BY: JB</p> <p>CHECKED BY: SC</p> <p>DRAWN BY: AOM</p> <p>APPROVED BY: SC</p> <p>SCALE: HORIZONTAL 1:250, VERTICAL 1:50</p> <p>RELEASED FOR CONSTRUCTION</p> <p>DATE: 2024 04 09</p> <p>PLOT DATE: 2024 04 09</p>	<p>CONTRACT NUMBER: 5</p> <p>FILE PATH: R:\DRAWINGS\WATER\RENEWAL\2024 RENEWALS\Cont 5\Construction Dwg\ KILDONAN DR.dwg</p>			