

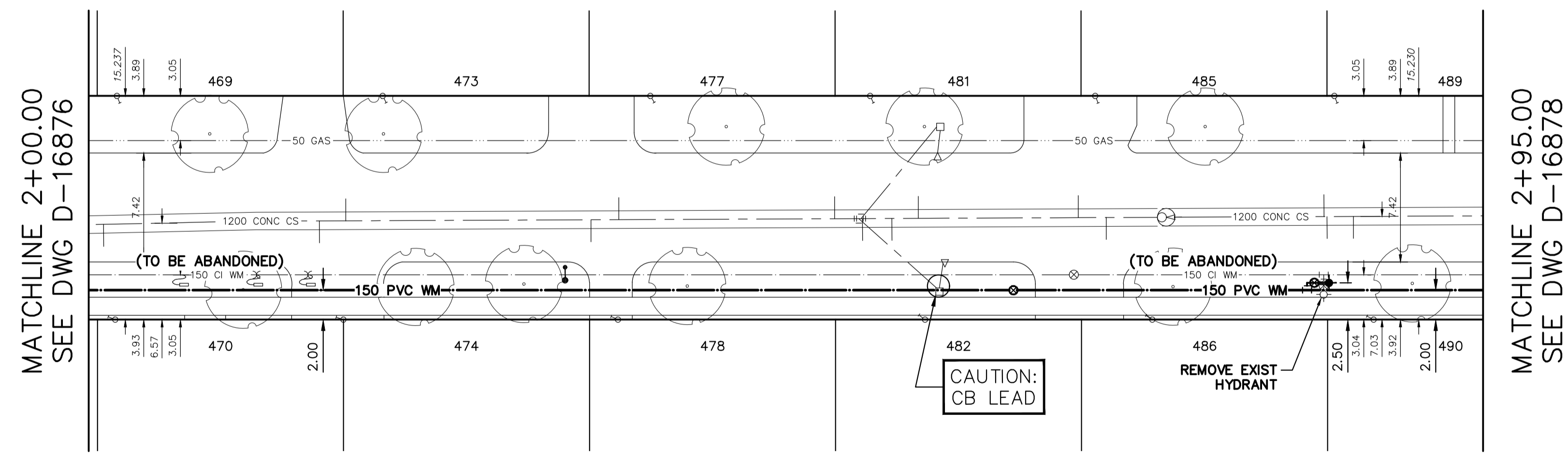
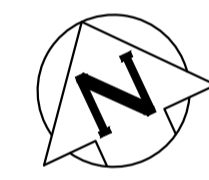
**WATER SERVICE INFORMATION**

ADDRESS	SIZE (mm) MATERIAL (STREET)	SIZE (mm) MATERIAL (PROP.)	SHORT & LONG MEASUREMENT	LINEAR DISTANCE CORP LOCATION	REMARKS
469 KINGSFORD AVENUE RESIDENTIAL	-	CU	0.34 WWL HSE 101.934 EEL DeFEHR STREET	-	RECONNECT SERVICE
470 KINGSFORD AVENUE RESIDENTIAL	-	CU	0.95 WWL HSE 101.821 EEL DeFEHR STREET	-	RECONNECT SERVICE
473 KINGSFORD AVENUE RESIDENTIAL	-	CU	0.84 EWL HSE 120.043 EEL DeFEHR STREET	-	RECONNECT SERVICE
474 KINGSFORD AVENUE RESIDENTIAL	-	CU	3.25 WWL HSE 117.373 EEL DeFEHR STREET	-	RECONNECT SERVICE
477 KINGSFORD AVENUE RESIDENTIAL	-	CU	1.24 EWL HSE 138.271 EEL DeFEHR STREET	-	RECONNECT SERVICE
478 KINGSFORD AVENUE RESIDENTIAL	-	CU	1.22 EWL HSE 136.084 EEL DeFEHR STREET	-	RECONNECT SERVICE
481 KINGSFORD AVENUE RESIDENTIAL	-	CU	0.19 EWL HSE 153.243 EEL DeFEHR STREET	-	RECONNECT SERVICE
482 KINGSFORD AVENUE RESIDENTIAL	-	CU	4.08 EWL HSE 156.995 EEL DeFEHR STREET	-	RECONNECT SERVICE
485 KINGSFORD AVENUE RESIDENTIAL	-	CU	2.89 WWL HSE 168.584 EEL DeFEHR STREET	-	RECONNECT SERVICE
486 KINGSFORD AVENUE RESIDENTIAL	-	CU	0.73 EWL HSE 172.482 EEL DeFEHR STREET	-	RECONNECT SERVICE
489 KINGSFORD AVENUE RESIDENTIAL	-	CU	1.26 WWL HSE 184.560 EEL DeFEHR STREET	-	RECONNECT SERVICE
490 KINGSFORD AVENUE RESIDENTIAL	-	CU	1.18 EWL HSE 187.560 EEL DeFEHR STREET	-	RECONNECT SERVICE

\* SERVICES TO BE RENEWED TO R. ALL OTHERS TO BE RECONNECTED

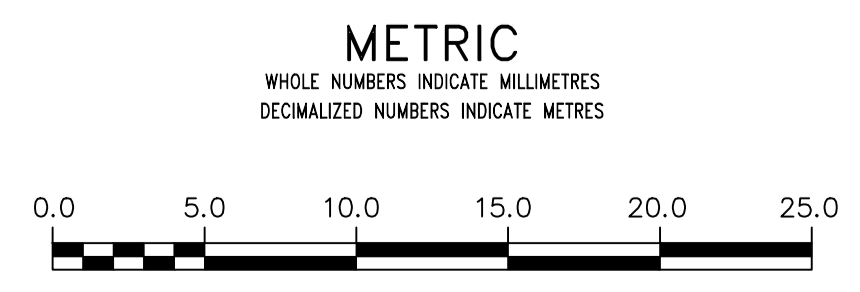
NOTE: CHAINAGES SHOWN ARE ALONG N P OF KINGSFORD AVENUE

**KINGSFORD AVENUE**



FOR INDEX SEE D-16869

NOTE: ALL VALVES TO BE INSTALLED COUNTERCLOCKWISE TO CLOSE



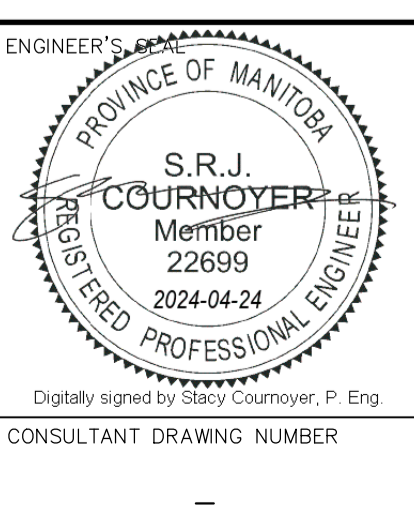
**WARNING**  
 IF POWER EQUIPMENT OR EXPLOSIVES ARE TO BE USED FOR EXCAVATION ON THIS PROJECT THE CONTRACTOR MUST:  
 1) NOTIFY THE GAS COMPANY OF THE PROPOSED LOCATION OF EXCAVATION.  
 2) TAKE PRECAUTION TO AVOID DAMAGE TO GAS COMPANY INSTALLATIONS.  
 SEE PROVINCIAL REGULATION 210/72 FOR DETAILS

**LOCATION APPROVED**  
 UNDERGROUND STRUCTURES  
 SUPV. U/G STRUCTURES COMMITTEE DATE  
 NOTE:  
 LOCATION OF UNDERGROUND STRUCTURES AS SHOWN ARE BASED ON THE BEST INFORMATION AVAILABLE BUT NO GUARANTEE IS GIVEN THAT ALL EXISTING UTILITIES ARE SHOWN OR THAT THE GIVEN LOCATIONS ARE EXACT. CONFIRMATION OF EXISTENCE AND EXACT LOCATION OF ALL SERVICES MUST BE OBTAINED FROM THE INDIVIDUAL UTILITIES BEFORE PROCEEDING WITH CONSTRUCTION.

VERTICAL DATUM: CGVD28 (HT2.0 Geoid)  
 HORIZONTAL DATUM: NAD83 (June 1990), Zone 14

NO.	REVISIONS	DATE	BY

DESIGNED BY	JB	CHECKED BY	SC
DRAWN BY	AOM	APPROVED BY	SC
SCALE:		RELEASED FOR CONSTRUCTION	
HORIZONTAL	1:250		
VERTICAL	1:50		
DATE	2024 04 05	DATE	
PLOT DATE: 2024 04 05			



**THE CITY OF WINNIPEG**  
 WATER AND WASTE DEPARTMENT  
 ENGINEERING DIVISION

2024 WATER MAIN RENEWALS  
 CONTRACT #5  
**KINGSFORD AVENUE**  
 100.0 E OF DeFEHR STREET TO  
 195.0 E OF DeFEHR STREET

SHEET 10 OF 13  
 CITY DRAWING NUMBER  
**D-16877**