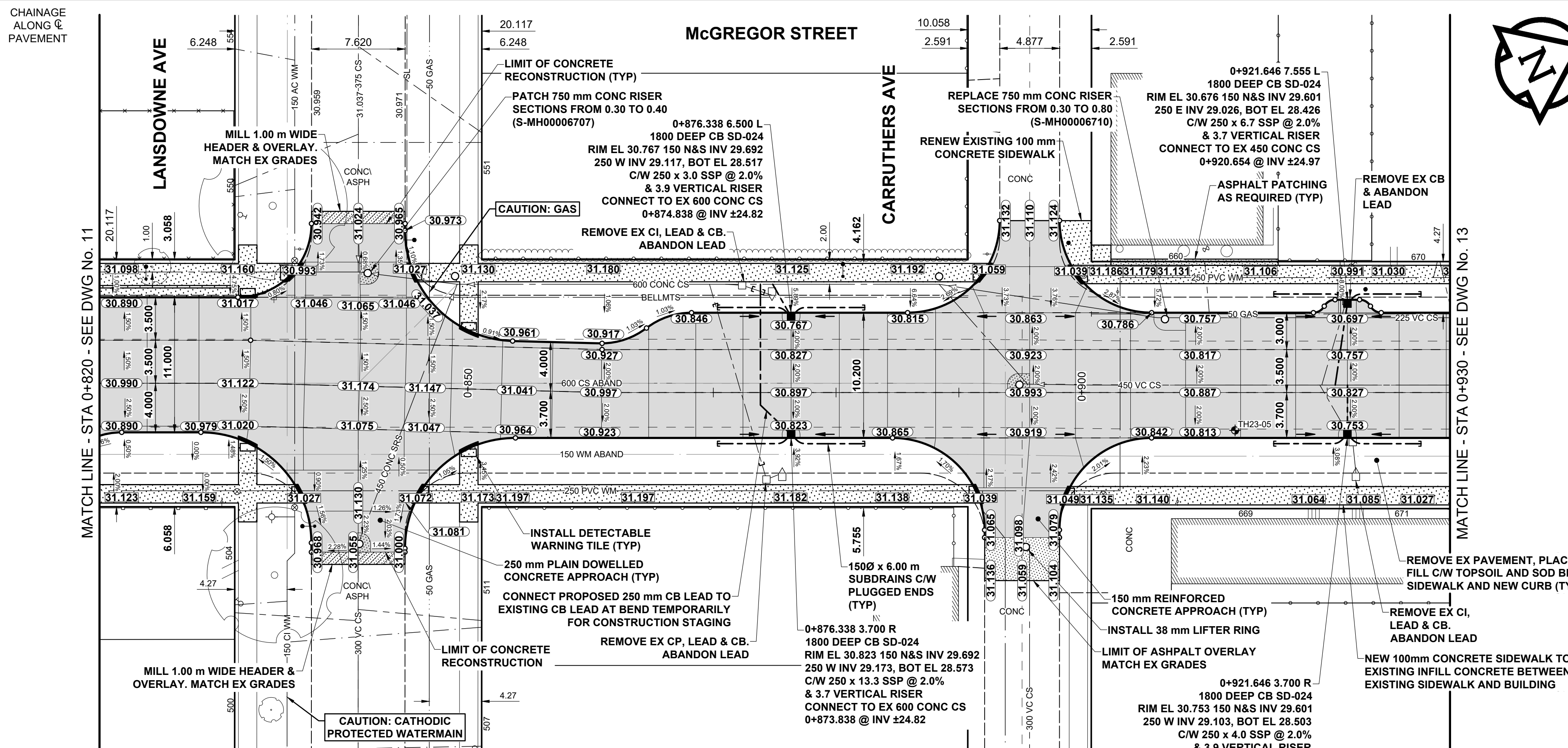


- NOTES**
- ADJUST MH AND CB RIMS TO NEW GRADES.
 - LAMP STANDARDS, HYDRO POLES, AND ANCHORS THAT REQUIRE TEMPORARY SUPPORT, REMOVAL OR REPLACEMENT, TO BE DONE SO AT THE EXPENSE OF THE CONTRACTOR AS NECESSARY.
 - CONTRACTOR TO REGRADE/RENEW EXISTING PRIVATE SIDEWALKS TO LIMITS AS SHOWN. SIDEWALKS TO BE RENEWED WITH CONCRETE UNLESS NOTED OTHERWISE.
 - CONTRACTOR TO TAKE PRECAUTIONARY STEPS TO PROTECT EXISTING TREES WITHIN THE LIMITS OF CONSTRUCTION FROM DAMAGE FROM CONSTRUCTION ACTIVITIES AS OUTLINED IN THE SPECIFICATIONS.
 - CONTRACTOR TO CONFIRM THE LOCATION OF ALL UTILITIES/SERVICES IN THE FIELD PRIOR TO CONSTRUCTION.
 - SD-024 OFFSETS ARE DIMENSIONED TO BOC.
 - IN GENERAL, PAVEMENT AND SIDEWALK AREAS TO BE REMOVED. MATCH RECONSTRUCTION LIMITS.
 - REFER TO TENDER FOR DETAILS REGARDING TRAFFIC MANAGEMENT.
 - EXISTING LONG WATER SERVICES TO BE INSULATED (SD-018). REFER TO TENDER FOR FURTHER REQUIREMENTS AND AS NOTED IN PLAN.
 - ALL COSTS, MATERIALS AND LABOR ASSOCIATED WITH THE RESTORATION OF THE CATHODIC PROTECTED WATERMAIN WILL BE RESPONSIBILITY OF THE CONTRACTOR.
 - ADD 200.000 m TO ABBREVIATED ELEVATIONS TO OBTAIN GEODETIC ELEVATIONS.

- AC WATERMAIN NOTES**
- USE OF VIBRATORY HEAVY EQUIPMENT WITHIN 3.0 METERS HORIZONTALLY OF THE ASBESTOS-CONCRETE WATER MAIN CENTERLINE IS PROHIBITED FOR SUBGRADE AND SUB-BASE MATERIALS. THIS RESTRICTION DOES NOT APPLY TO THE USE OF VIBRATORY ROLLERS ON THE PAVEMENT SURFACE LAYERS AND BASE COURSE LAYER.
 - CONCRETE DEMOLITION AND REMOVAL WITHIN 3.0 METERS HORIZONTALLY OF THE ASBESTOS-CONCRETE WATER MAIN SHALL BE COMPLETED BY SAW CUTTING OR USE OF HAND-HELD JACKHAMMERS. USE OF MACHINE MOUNTED CONCRETE BREAKERS ABOVE ASBESTOS-CONCRETE WATER MAINS IS PROHIBITED.



EXISTING	LEGEND - PLAN	PROPOSED	EXISTING	LEGEND - PLAN	PROPOSED	EXISTING	LEGEND - PLAN	PROPOSED
⊕	HYDRANT	⊕	---	LDS / WWS	---	---	CONCRETE	---
⊖	VALVE	⊖	---	WATER MAIN	---	---	CONC SIDEWALK / MEDIAN	---
⊙	CURB STOP	⊙	---	GAS	---	---	ASPHALT	---
⊚	MANHOLE	⊚	---	TRAFFIC SIGNALS	---	---	PAVING STONE	---
⊠	CATCH BASIN / CATCH PIT	⊠	---	HYDRO / STREET LIGHT	---	---	GRAVEL	---
⊡	CURB INLET	⊡	---	COMMUNICATIONS	---	---	PLANING / REMOVAL	---
⊙	POLE	⊙	---	CURB RENEWAL	---	---	DITCH FLOW	---
⊙	LIGHT STANDARD	⊙	---	PROPERTY LINE	---	---	TOP OF SLOPE	---
⊙	TRAFFIC SIGNAL POLE	⊙	---	RAMP CURB	---	---	CULVERT	---
⊙	SURVEY BAR	⊙	---	ELEVATIONS	---	---	SEWER FLOW DIRECTION	---
⊙	TEST HOLE / CORE HOLE	⊙	---	TREE / TREELINE	---	---		---
---	LEGEND - PLAN	---	---	LEGEND - PLAN	---	---		---

LOCATION APPROVED
UNDERGROUND STRUCTURES

SUPR. UG STRUCTURES DATE

NOTE:
LOCATION OF UNDERGROUND STRUCTURES AS SHOWN ARE BASED ON THE BEST INFORMATION AVAILABLE BUT NO GUARANTEE IS GIVEN THAT ALL EXISTING UTILITIES ARE SHOWN OR THAT THE GIVEN LOCATIONS ARE EXACT. CONFIRMATION OF EXISTENCE AND EXACT LOCATION OF ALL SERVICES MUST BE OBTAINED FROM THE INDIVIDUAL UTILITIES BEFORE PROCEEDING WITH CONSTRUCTION.

BIM 26-03	Bolt in 14.3 m Conc. pile, 2.2 m S. of N.L. of Inkster Blvd., and on W.L. of Atkins St.
ELEV 230.992 m	
DESIGNED BY	ASM
CHECKED BY	GFC
DRAWN BY	KMB
APPROVED BY	RPB
RELEASED FOR CONSTRUCTION	
HOR SCALE	1:250
VERT SCALE	1:10
DATE	JANUARY 7, 2025
ISSUED FOR TENDER	25/01/07 GFC
REVISIONS	Y/M/MDD BY

PROFESSIONAL'S SEAL

PROVINCE OF MANITOBA

G.F. COOLIDGE
Member
24465
2023-01-07

REGISTERED PROFESSIONAL ENGINEER

CONSULTANT FILE NAME
2303678-McGregor-PP.dwg

THE CITY OF WINNIPEG
PUBLIC WORKS DEPARTMENT
ENGINEERING DIVISION

2025 REGIONAL STREET RENEWAL

McGREGOR STREET
CHURCH AVENUE TO McADAM AVENUE
PAVING AND GRADING
STA 0+820 TO STA 0+930

CITY DRAWING NUMBER
P-3587-12

SHEET 12 OF 14

DRAWING NUMBER
12

TENDER No. 728-2024

ENGINEERS
GEOSCIENTISTS
MANITOBA

Certificate of Authorization
Stantec Consulting Ltd.
No. 1301

Stantec
500 - 311 Portage Avenue, Winnipeg MB Canada R3B 2B9
Tel. 204.489.5900 Fax. 204.453.9012 www.stantec.com