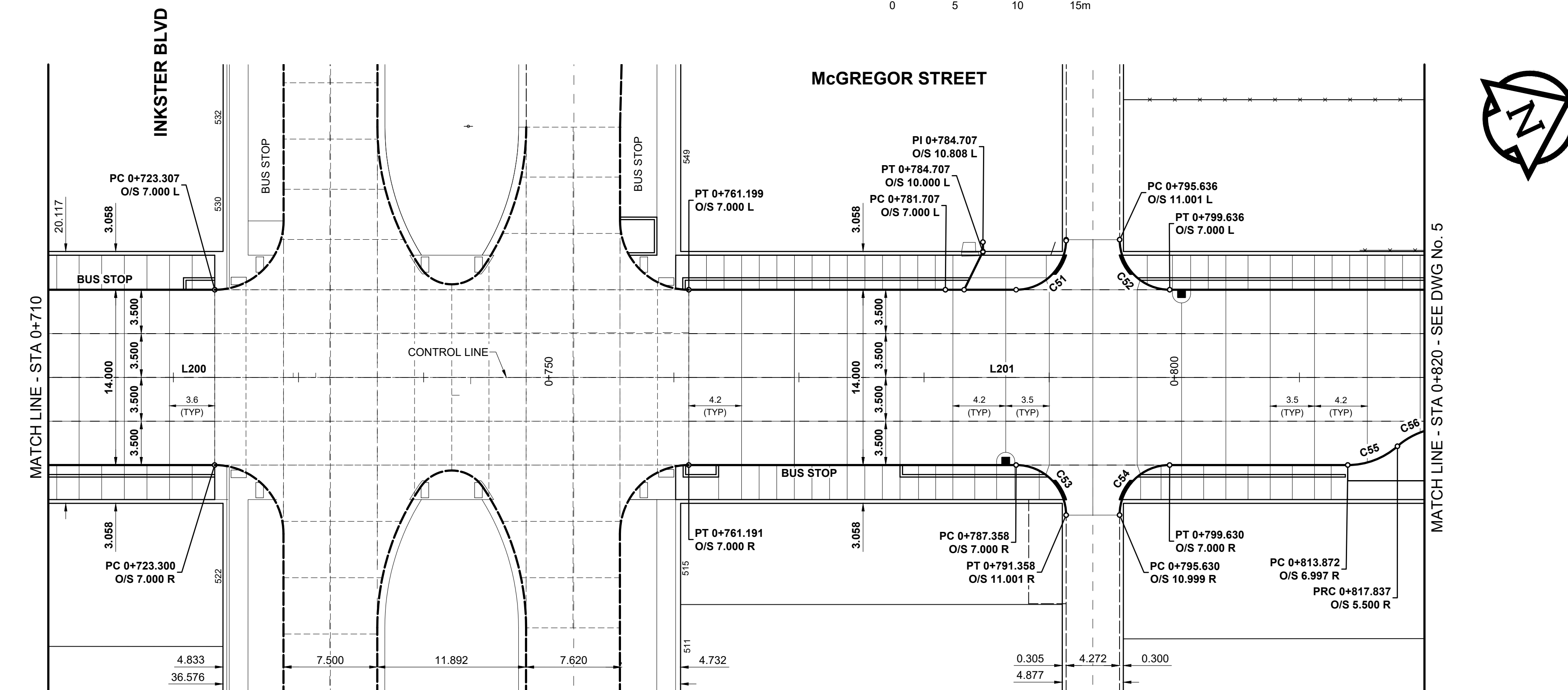


**PLAN**  
SCALE: 1:250



**PLAN**  
SCALE: 1:250

CURVE TABLE				
CURVE	RADIUS	LENGTH	DELTA	TANGENT
C37	5.000	7.853	89°59'00"	4.999
C38	5.000	7.855	90°01'00"	5.001
C39	5.000	7.852	89°58'40"	4.998
C40	5.000	7.856	90°01'20"	5.002
C41	2.500	3.927	90°00'00"	2.500
C42	2.000	3.142	90°00'00"	2.000
C43	3.500	5.496	89°58'40"	3.499
C44	3.500	5.499	90°01'20"	3.501
C45	3.500	5.497	89°59'00"	3.499
C46	3.500	5.499	90°01'00"	3.501
C47	3.500	5.497	89°59'05"	3.499
C48	2.500	3.927	90°00'21"	2.500
C49	4.000	5.333	76°23'05"	3.147
C50	4.000	5.333	76°23'05"	3.147
C51	4.000	6.206	88°53'37"	3.924
C52	4.000	6.284	90°00'57"	4.001
C53	4.000	6.284	90°00'57"	4.001
C54	4.000	6.282	89°59'03"	3.999
C55	6.000	4.336	41°24'35"	2.268
C56	6.000	4.336	41°24'35"	2.268

CONTROL LINE GEOMETRY										
NUMBER	LENGTH	RADIUS	DELTA	TANGENT	START STATION	NORTHING	EASTING	END STATION	NORTHING	EASTING
L200	713.836				0+009.471	8047.643	12487.462	0+723.307	8694.191	12790.013
L201	108.925				0+723.307	8694.191	12790.013	0+832.232	8792.849	12836.180

**METRIC**  
WHOLE NUMBERS INDICATE MILLIMETRES  
DECIMALIZED NUMBERS INDICATE METRES

EXISTING	LEGEND - PLAN	PROPOSED	EXISTING	LEGEND - PLAN	PROPOSED	EXISTING	LEGEND - PLAN	PROPOSED
⊕	HYDRANT	⊕	---	LDS / WWS	---	▨	CONCRETE	▨
⊙	VALVE	⊙	---	WATER MAIN	---	▩	CONC SIDEWALK / MEDIAN	▩
⊖	CURB STOP	⊖	---	GAS	---	▧	ASPHALT	▧
○	MANHOLE	○	---	TRAFFIC SIGNALS	---	▤	PAVING STONE	▤
□	CATCH BASIN / CATCH PIT	□	---	HYDRO / STREET LIGHT	---	▥	GRAVEL	▥
△	CURB INLET	△	---	COMMUNICATIONS	---	▦	PLANING / REMOVAL	▦
•	POLE	•	---	CURB RENEWAL	---	▧	DITCH FLOW	▧
•	LIGHT STANDARD	•	---	PROPERTY LINE	---	▨	TOP OF SLOPE	▨
•	TRAFFIC SIGNAL POLE	•	---	RAMP CURB	---	▩	CULVERT	▩
⊕	SURVEY BAR	⊕	---	ELEVATIONS	(32.123)	▩	SEWER FLOW DIRECTION	▩
⊕	TEST HOLE / CORE HOLE	⊕	---	TREE / TREELINE	---	▩		▩

**LOCATION APPROVED**  
UNDERGROUND STRUCTURES

SUPR. U/G STRUCTURES DATE

**NOTE:**  
LOCATION OF UNDERGROUND STRUCTURES AS SHOWN ARE BASED ON THE BEST INFORMATION AVAILABLE BUT NO GUARANTEE IS GIVEN THAT ALL EXISTING UTILITIES ARE SHOWN OR THAT THE GIVEN LOCATIONS ARE EXACT. CONFIRMATION OF EXISTENCE AND EXACT LOCATION OF ALL SERVICES MUST BE OBTAINED FROM THE INDIVIDUAL UTILITIES BEFORE PROCEEDING WITH CONSTRUCTION.

BM 26-03	Bolt in 14.3 m Conc. pile, 2.2 m S. of N.L. of Inkster Blvd., and on W.L. of Atkins St.		
ELEV 230.992 m			
0	ISSUED FOR TENDER	25/01/07	GFC
No.	REVISIONS	YYMMDD	BY

**Stantec**  
500 - 311 Portage Avenue, Winnipeg MB Canada R3B 2B9  
Tel. 204.489.5900 Fax. 204.453.9012 www.stantec.com

DESIGNED BY	ASM	CHECKED BY	GFC
DRAWN BY	KMB	APPROVED BY	RPB
RELEASED FOR CONSTRUCTION			
HOR SCALE	1:250		
VERT SCALE			
DATE	JANUARY 7, 2025	DATE	

PROFESSIONAL'S SEAL

PROVINCE OF MANITOBA  
**G.F. COOLIDGE**  
Member 24465  
REGISTERED PROFESSIONAL ENGINEER

CONSULTANT FILE NAME  
2303678-McGregor-HG.dwg

**THE CITY OF WINNIPEG**  
PUBLIC WORKS DEPARTMENT  
ENGINEERING DIVISION

**2025 REGIONAL STREET RENEWAL**

**McGREGOR STREET**  
CHURCH AVENUE TO McADAM AVENUE  
HORIZONTAL GEOMETRY  
STA 0+590 TO STA 0+820

CITY DRAWING NUMBER	P-3587-4
SHEET	4 OF 14
DRAWING NUMBER	4

TENDER No. 728-2024