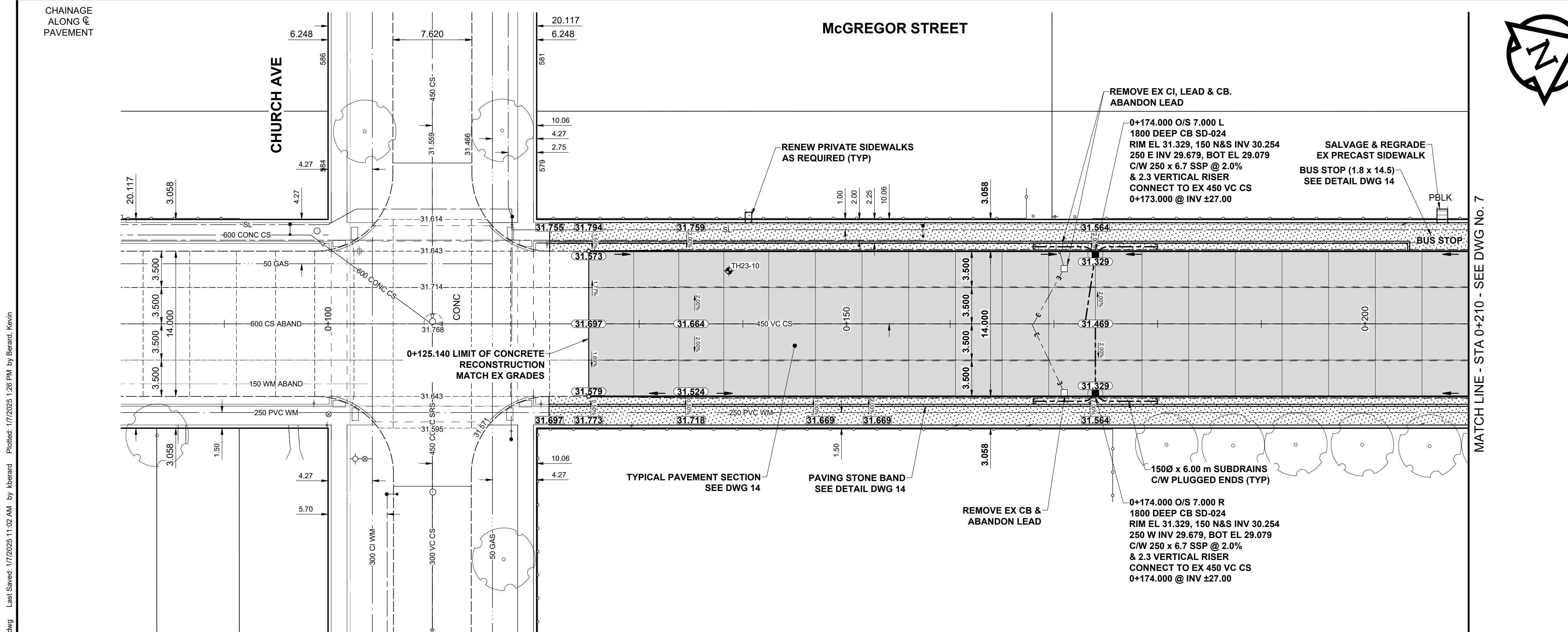


- NOTES**
- ADJUST MH AND CB RIMS TO NEW GRADES.
  - LAMP STANDARDS, HYDRO POLES, AND ANCHORS THAT REQUIRE TEMPORARY SUPPORT, REMOVAL OR REPLACEMENT, TO BE DONE SO AT THE EXPENSE OF THE CONTRACTOR AS NECESSARY.
  - CONTRACTOR TO REGRADE/RENEW EXISTING PRIVATE SIDEWALKS TO LIMITS AS SHOWN. SIDEWALKS TO BE RENEWED WITH CONCRETE UNLESS NOTED OTHERWISE.
  - CONTRACTOR TO TAKE PRECAUTIONARY STEPS TO PROTECT EXISTING TREES WITHIN THE LIMITS OF CONSTRUCTION FROM DAMAGE FROM CONSTRUCTION ACTIVITIES AS OUTLINED IN THE SPECIFICATIONS.
  - CONTRACTOR TO CONFIRM THE LOCATION OF ALL UTILITIES/SERVICES IN THE FIELD PRIOR TO CONSTRUCTION.
  - SD-024 OFFSETS ARE DIMENSIONED TO BOC.
  - IN GENERAL, PAVEMENT AND SIDEWALK AREAS TO BE REMOVED. MATCH RECONSTRUCTION LIMITS.
  - REFER TO TENDER FOR DETAILS REGARDING TRAFFIC MANAGEMENT.
  - EXISTING LONG WATER SERVICES TO BE INSULATED (SD-018). REFER TO TENDER FOR FURTHER REQUIREMENTS AND AS NOTED IN PLAN.
  - ALL COSTS, MATERIALS AND LABOR ASSOCIATED WITH THE RESTORATION OF THE CATHODIC PROTECTED WATERMAIN WILL BE RESPONSIBILITY OF THE CONTRACTOR.
  - ADD 200.000 m TO ABBREVIATED ELEVATIONS TO OBTAIN GEODETIC ELEVATIONS.



**METRIC**  
WHOLE NUMBERS INDICATE MILLIMETRES  
DECIMALIZED NUMBERS INDICATE METRES

**PLAN**  
SCALE: 1:250

EXISTING	LEGEND - PLAN	PROPOSED	EXISTING	LEGEND - PLAN	PROPOSED	EXISTING	LEGEND - PLAN	PROPOSED
⊕	HYDRANT	⊕	---	LDS / WWS	---	CONCRETE	---	CONCRETE
⊙	VALVE	⊙	---	WATER MAIN	---	CONC SIDEWALK / MEDIAN	---	CONC SIDEWALK / MEDIAN
⊖	CURB STOP	⊖	---	GAS	---	ASPHALT	---	ASPHALT
○	MANHOLE	○	---	TRAFFIC SIGNALS	---	PAVING STONE	---	PAVING STONE
□	CATCH BASIN / CATCH PIT	□	---	HYDRO / STREET LIGHT	---	GRAVEL	---	GRAVEL
△	CURB INLET	△	---	COMMUNICATIONS	---	PLANING / REMOVAL	---	PLANING / REMOVAL
•	POLE	•	---	RAMP CURB	---	DITCH FLOW	---	DITCH FLOW
•	LIGHT STANDARD	•	---	ELEVATIONS	(32.123)	TOP OF SLOPE	---	TOP OF SLOPE
•	TRAFFIC SIGNAL POLE	•	---	TREE / TREELINE	---	CULVERT	---	CULVERT
+	SURVEY BAR	+	---	SEWER FLOW DIRECTION	---		---	
⊕	TEST HOLE / CORE HOLE	⊕	---		---		---	

**LOCATION APPROVED**  
UNDERGROUND STRUCTURES

DATE: \_\_\_\_\_

**NOTE:**  
LOCATION OF UNDERGROUND STRUCTURES AS SHOWN ARE BASED ON THE BEST INFORMATION AVAILABLE BUT NO GUARANTEE IS GIVEN THAT ALL EXISTING UTILITIES ARE SHOWN OR THAT THE GIVEN LOCATIONS ARE EXACT. CONFIRMATION OF EXISTENCE AND EXACT LOCATION OF ALL SERVICES MUST BE OBTAINED FROM THE INDIVIDUAL UTILITIES BEFORE PROCEEDING WITH CONSTRUCTION.

BM 26-03	Bolt in 14.3 m Conc. pile, 2.2 m S. of N.L. of Inlander Blvd., and on W.L. of Alkins St.
ELEV 230.992 m	

DESIGNED BY: ASM  
CHECKED BY: GFC  
DRAWN BY: KMB  
APPROVED BY: RPB  
RELEASED FOR CONSTRUCTION

HOR SCALE: 1:250  
VERT SCALE: 1:10  
DATE: JANUARY 7, 2025

PROFESSIONAL'S SEAL  
G.F. COOLIDGE  
Member 24465  
REGISTERED PROFESSIONAL ENGINEER

CONSULTANT FILE NAME  
2303678-McGregor-PP.dwg



MATCH LINE - STA 0+210 - SEE DWG No. 7

**ENGINEERS**  
**GEOSCIENTISTS**  
MARNIT OSA  
Certificate of Authorization  
Stantec Consulting Ltd.  
No. 1301

TENDER No. 728-2024

**THE CITY OF WINNIPEG**  
**PUBLIC WORKS DEPARTMENT**  
**ENGINEERING DIVISION**

**2025 REGIONAL STREET RENEWAL**

**McGREGOR STREET**  
**CHURCH AVENUE TO McADAM AVENUE**  
**PAVING AND GRADING**  
**CHURCH AVE TO STA 0+210**

CITY DRAWING NUMBER  
P-3587-6

SHEET 6 OF 14

DRAWING NUMBER  
**6**