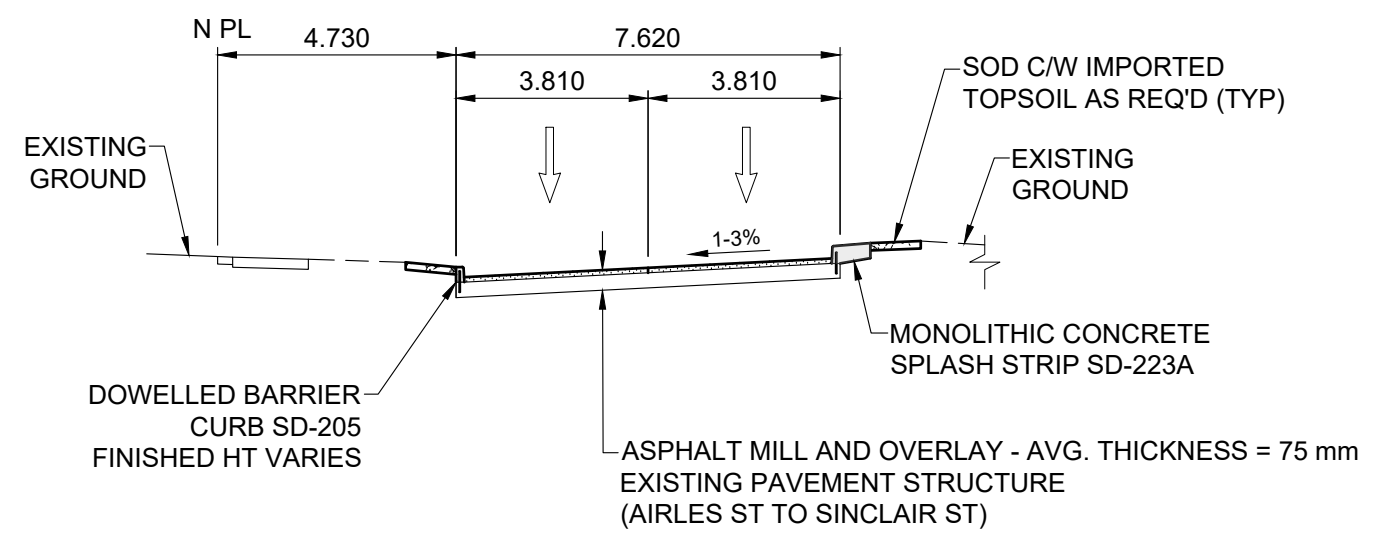
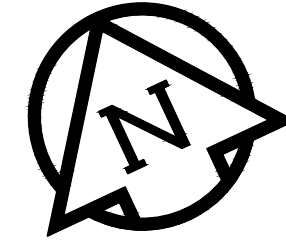
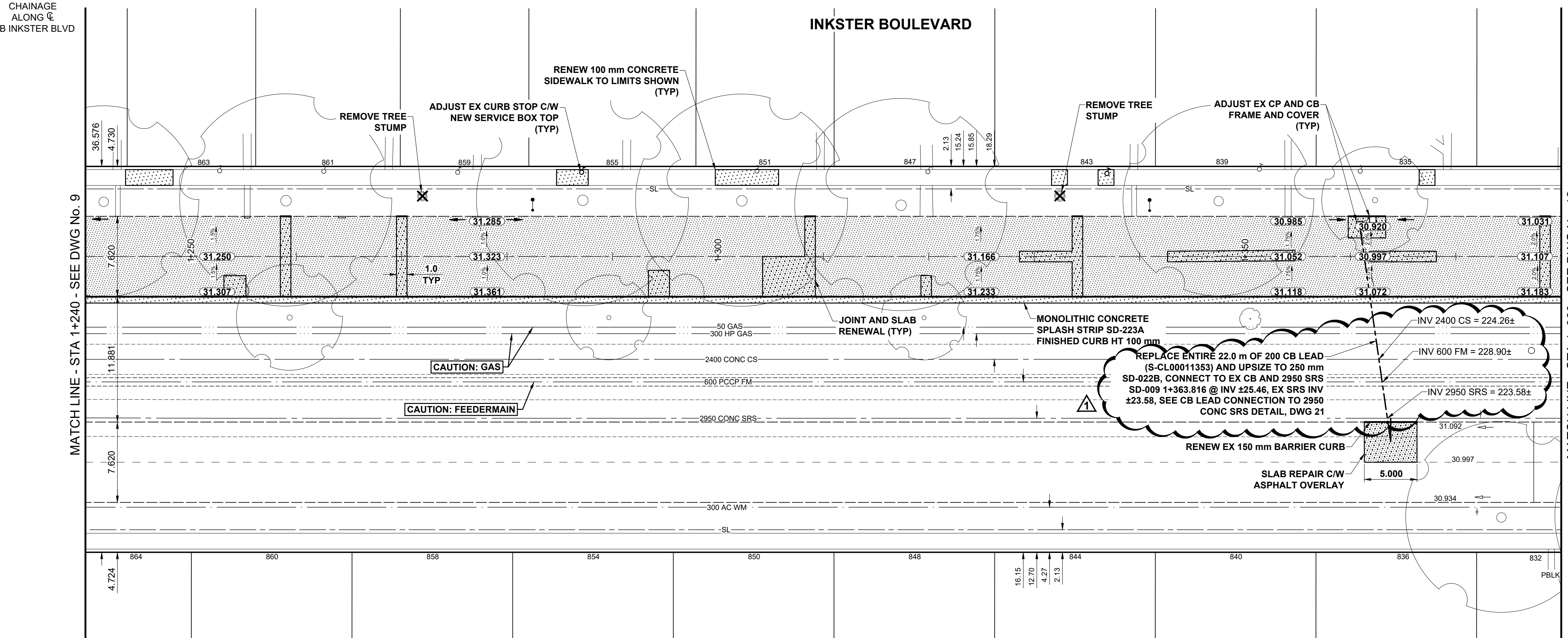


- NOTES**
- ADJUST MH AND CB RIMS TO NEW GRADES.
  - LAMP STANDARDS, HYDRO POLES, AND ANCHORS THAT REQUIRE TEMPORARY SUPPORT, REMOVAL OR REPLACEMENT, TO BE DONE SO AT THE EXPENSE OF THE CONTRACTOR AS NECESSARY.
  - CONTRACTOR TO REGRADE/RENEW EXISTING PRIVATE SIDEWALKS TO LIMITS AS SHOWN. SIDEWALKS TO BE RENEWED WITH CONCRETE UNLESS NOTED OTHERWISE.
  - CONTRACTOR TO TAKE PRECAUTIONARY STEPS TO PROTECT EXISTING TREES WITHIN THE LIMITS OF CONSTRUCTION FROM DAMAGE FROM CONSTRUCTION ACTIVITIES AS OUTLINED IN THE SPECIFICATIONS.
  - CONTRACTOR TO CONFIRM THE LOCATION OF ALL UTILITIES/SERVICES IN THE FIELD PRIOR TO CONSTRUCTION.
  - MODIFIED BARRIER CURB TO BE USED AT ALL INTERSECTION RADII, BACK LANE RADII AND BULLNOSES.
  - CONTRACTOR TO OVERLAY DRIVEWAYS TO ENSURE POSITIVE DRAINAGE TO NEW STREET GRADES. FINAL LIMITS TO BE DETERMINED IN THE FIELD BY CONTRACT ADMINISTRATOR.
  - SD-024 OFFSETS ARE DIMENSIONED TO BOC.
  - REFER TO TENDER FOR DETAILS REGARDING TRAFFIC MANAGEMENT.
  - MATCH EXISTING GRADES AT DOOR SILLS.
  - ADJUST EXISTING WATER VALVES AND WATER SERVICE CURB STOPS TO GRADE.
  - ALL COSTS, MATERIALS AND LABOR ASSOCIATED WITH THE RESTORATION OF THE CATHODIC PROTECTED WATERMAIN WILL BE RESPONSIBILITY OF THE CONTRACTOR.
  - ADD 200.000 m TO ABBREVIATED ELEVATIONS TO OBTAIN GEODETIC ELEVATIONS.
  - EXCAVATION SHALL BE PERFORMED IN A MANNER THAT MINIMIZES DAMAGE TO THE EXISTING TREE ROOT SYSTEMS. WHERE ROOTS MUST BE CUT TO FACILITATE EXCAVATION, THEY SHALL BE PRUNED NEATLY AT THE FACE OF EXCAVATION.

- FEEDERMAIN NOTES**
- CONTACT THE WATER AND WASTE DEPARTMENT'S CONSTRUCTION SERVICES COORDINATOR AT 204-986-4289, 7 DAYS PRIOR TO THE COMMENCEMENT OF CONSTRUCTION TO ARRANGE FOR AN INSPECTION.
  - PRIOR TO ANY CONSTRUCTION, THE FEEDERMAIN MUST BE EXPOSED BY A SOFT DIG METHOD SO AS TO CONFIRM DEPTH AND LOCATION.
  - A MINIMUM CLEARANCE OF 0.5 m MUST BE PROVIDED BETWEEN THE UNDERSIDE OF THE PROPOSED WORKS AND THE TOP ANY EXISTING FEEDERMAIN BY TRENCHLESS OR OPEN TRENCH.



**WESTBOUND INKSTER BOULEVARD  
TYPICAL PAVEMENT SECTION**  
CONCRETE REHABILITATION  
SCALE: NTS

**ENGINEERS  
GEOSCIENTISTS  
MANITOBA**  
Certificate of Authorization  
Stantec Consulting Ltd.  
No. 1301  
TENDER No. 729-2024

**METRIC**  
WHOLE NUMBERS INDICATE MILLIMETRES  
DECIMALIZED NUMBERS INDICATE METRES

**PLAN**  
SCALE: 1:250

EXISTING	LEGEND - PLAN	PROPOSED	EXISTING	LEGEND - PLAN	PROPOSED	EXISTING	LEGEND - PLAN	PROPOSED
○	HYDRANT	◆	---	LDS / WWS	---	▨	CONCRETE	▨
⊗	VALVE	⊗	---	WATER MAIN	---	▨	CONC SIDEWALK / MEDIAN	▨
○	CURB STOP	○	---	GAS	---	▨	ASPHALT	▨
○	MANHOLE	●	---	TRAFFIC SIGNALS	---	▨	PAVING STONE	▨
□	CATCH BASIN / CATCH PIT	■	---	HYDRO / STREET LIGHT	---	▨	GRAVEL	▨
△	CURB INLET	▲	---	COMMUNICATIONS	---	▨	PLANING / REMOVAL	▨
•	POLE	•	---	CURB RENEWAL	---	▨	DITCH FLOW	▨
•	LIGHT STANDARD	•	---	PROPERTY LINE	---	▨	TOP OF SLOPE	▨
•	TRAFFIC SIGNAL POLE	•	---	RAMP CURB	---	▨	CULVERT	▨
+	SURVEY BAR	+	---	ELEVATIONS	(32.123)	▨	SEWER FLOW DIRECTION	▨
◆	TEST HOLE / CORE HOLE	◆	---	TREE / TREELINE	---	▨		▨

**LOCATION APPROVED  
UNDERGROUND STRUCTURES**

SUPR. U/G STRUCTURES COMMITTEE DATE

**NOTE:**  
LOCATION OF UNDERGROUND STRUCTURES AS SHOWN ARE BASED ON THE BEST INFORMATION AVAILABLE BUT NO GUARANTEE IS GIVEN THAT ALL EXISTING UTILITIES ARE SHOWN OR THAT THE GIVEN LOCATIONS ARE EXACT. CONFIRMATION OF EXISTENCE AND EXACT LOCATION OF ALL SERVICES MUST BE OBTAINED FROM THE INDIVIDUAL UTILITIES BEFORE PROCEEDING WITH CONSTRUCTION.

No.	REVISIONS	DATE	BY
1	ISSUED FOR ADDENDUM 1	25/01/13	RPB
0	ISSUED FOR TENDER	24/12/18	RPB

**Stantec**  
500 - 311 Portage Avenue, Winnipeg MB Canada R3B 2B9  
Tel. 204.489.5900 Fax. 204.453.9012 www.stantec.com

DESIGNED BY: RPB CHECKED BY: GFC  
DRAWN BY: KMB APPROVED BY: RPB  
RELEASED FOR CONSTRUCTION

HOR SCALE: 1:250  
VERT SCALE: 1:10  
DATE: DECEMBER 18, 2024

PROFESSIONAL'S SEAL

ORIGINAL DRAWING  
REV No. 0

SEALED BY:  
R.P. BRUCE  
2024-12-18

CONSULTANT FILE NAME  
2303678-Inkster WB-PP-REHAB\_2.dwg

**THE CITY OF WINNIPEG  
PUBLIC WORKS DEPARTMENT  
ENGINEERING DIVISION**

**2025 REGIONAL STREET RENEWALS**

**WESTBOUND INKSTER BOULEVARD  
AIRLIES STREET TO SINCLAIR STREET**

**PAVING AND GRADING**  
STA 1+240 TO STA 1+380

CITY DRAWING NUMBER: P-3586-10  
SHEET 10 OF 21  
DRAWING NUMBER: 10