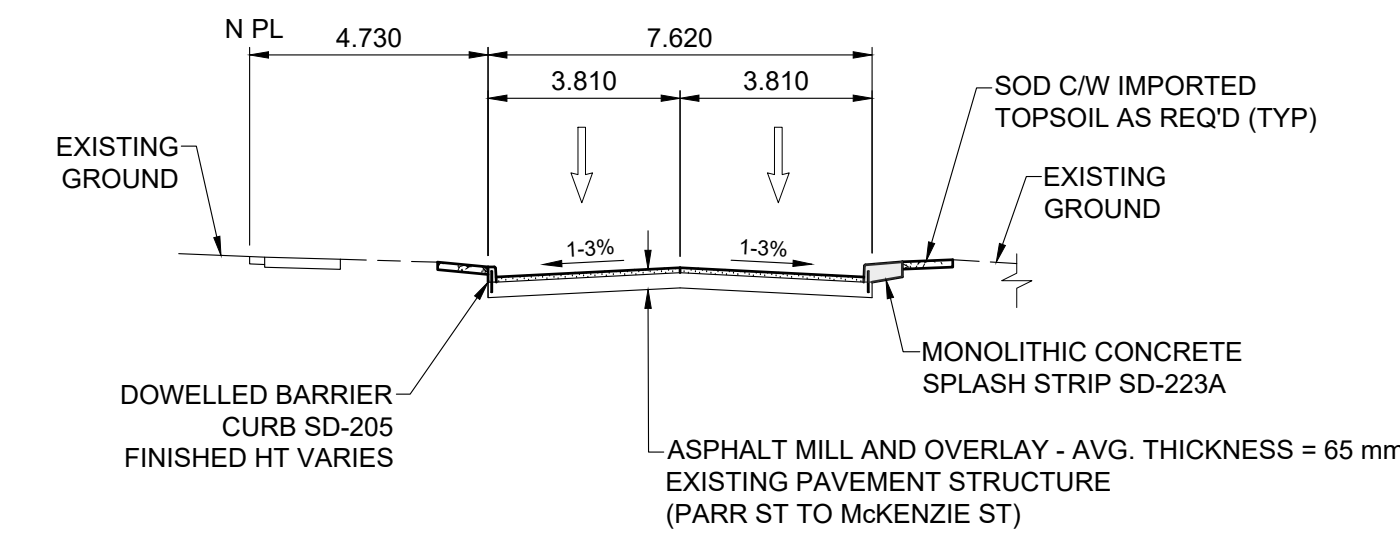
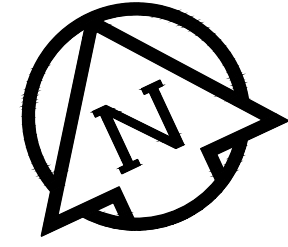
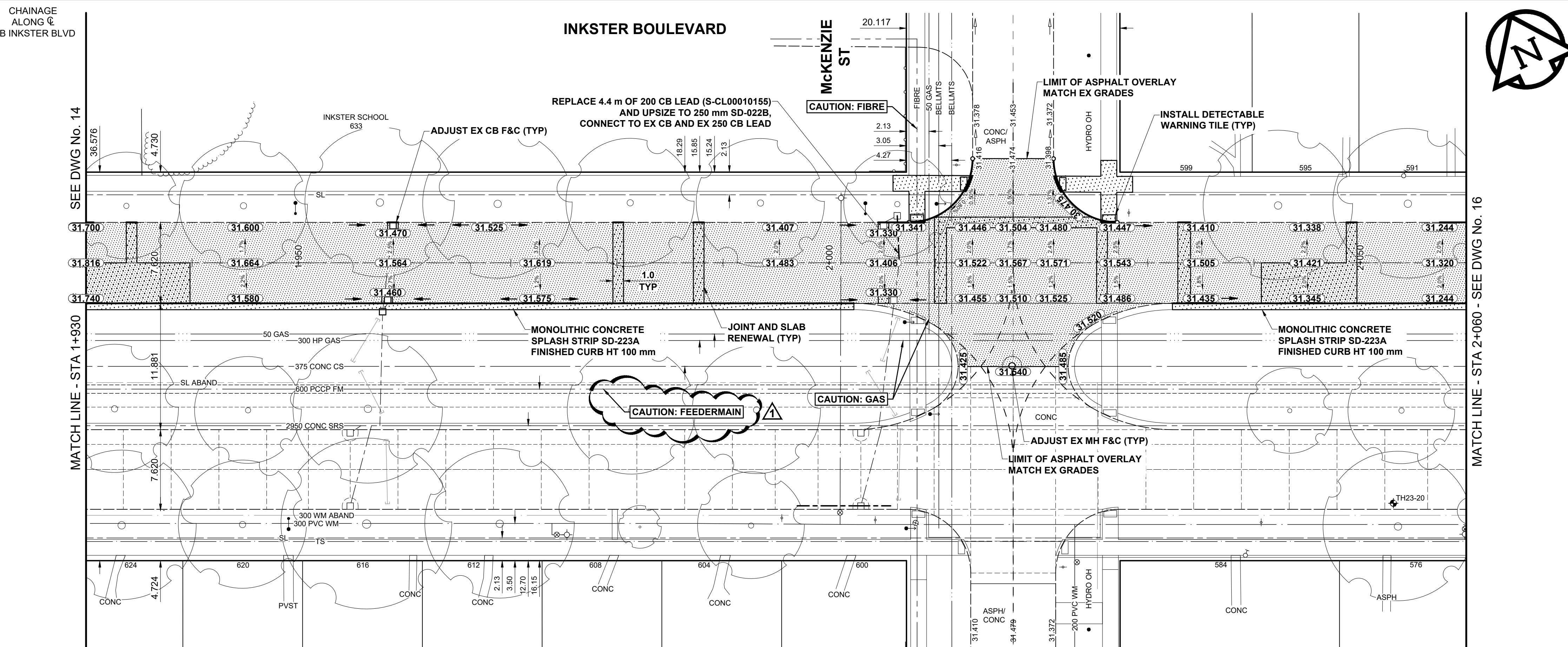


- NOTES**
- ADJUST MH AND CB RIMS TO NEW GRADES.
  - LAMP STANDARDS, HYDRO POLES, AND ANCHORS THAT REQUIRE TEMPORARY SUPPORT, REMOVAL OR REPLACEMENT, TO BE DONE SO AT THE EXPENSE OF THE CONTRACTOR AS NECESSARY.
  - CONTRACTOR TO REGRADE/RENEW EXISTING PRIVATE SIDEWALKS TO LIMITS AS SHOWN. SIDEWALKS TO BE RENEWED WITH CONCRETE UNLESS NOTED OTHERWISE.
  - CONTRACTOR TO TAKE PRECAUTIONARY STEPS TO PROTECT EXISTING TREES WITHIN THE LIMITS OF CONSTRUCTION FROM DAMAGE FROM CONSTRUCTION ACTIVITIES AS OUTLINED IN THE SPECIFICATIONS.
  - CONTRACTOR TO CONFIRM THE LOCATION OF ALL UTILITIES/SERVICES IN THE FIELD PRIOR TO CONSTRUCTION.
  - MODIFIED BARRIER CURB TO BE USED AT ALL INTERSECTION RADII, BACK LANE RADII AND BULLNOSES.
  - CONTRACTOR TO OVERLAY DRIVEWAYS TO ENSURE POSITIVE DRAINAGE TO NEW STREET GRADES. FINAL LIMITS TO BE DETERMINED IN THE FIELD BY CONTRACT ADMINISTRATOR.
  - ADD 200.000 m TO ABBREVIATED ELEVATIONS TO OBTAIN GEODETIC ELEVATIONS.
  - EXCAVATION SHALL BE PERFORMED IN A MANNER THAT MINIMIZES DAMAGE TO THE EXISTING TREE ROOT SYSTEMS. WHERE ROOTS MUST BE CUT TO FACILITATE EXCAVATION, THEY SHALL BE PRUNED NEATLY AT THE FACE OF EXCAVATION.

- FEEDERMAIN NOTES**
- CONTACT THE WATER AND WASTE DEPARTMENT'S CONSTRUCTION SERVICES COORDINATOR AT 204-986-4289, 7 DAYS PRIOR TO THE COMMENCEMENT OF CONSTRUCTION TO ARRANGE FOR AN INSPECTION.
  - PRIOR TO ANY CONSTRUCTION, THE FEEDERMAIN MUST BE EXPOSED BY A SOFT DIG METHOD SO AS TO CONFIRM DEPTH AND LOCATION.
  - A MINIMUM CLEARANCE OF 0.5 m MUST BE PROVIDED BETWEEN THE UNDERSIDE OF THE PROPOSED WORKS AND THE TOP ANY EXISTING FEEDERMAIN BY TRENCHLESS OR OPEN TRENCH.



**WESTBOUND INKSTER BOULEVARD TYPICAL PAVEMENT SECTION**

MILL AND FILL  
SCALE: NTS

**ENGINEERS GEOSCIENTISTS**  
MANITOBA  
Certificate of Authorization  
Stantec Consulting Ltd.  
No. 1301

TENDER No. 729-2024

**METRIC**  
WHOLE NUMBERS INDICATE MILLIMETRES  
DECIMALIZED NUMBERS INDICATE METRES

**PLAN**  
SCALE: 1:250

⊕	HYDRANT	◆	LDs / WWS	▨	CONCRETE
⊖	VALVE	⊗	WATER MAIN	▩	CONC SIDEWALK / MEDIAN
⊙	CURB STOP	⊘	GAS	▧	ASPHALT
○	MANHOLE	●	TRAFFIC SIGNALS	▦	PAVING STONE
□	CATCH BASIN / CATCH PIT	■	HYDRO / STREET LIGHT	▥	GRAVEL
△	CURB INLET	▲	COMMUNICATIONS	▤	PLANING / REMOVAL
•	POLE	◆	PROPERTY LINE	▣	DITCH FLOW
••	LIGHT STANDARD	▬	RAMP CURB	▢	TOP OF SLOPE
•••	TRAFFIC SIGNAL POLE	▬	ELEVATIONS	□	CULVERT
⊕	SURVEY BAR	233.000	TREE / TREELINE	■	SEWER FLOW DIRECTION
⊕-TH-12	TEST HOLE / CORE HOLE	⊕		▤	
EXISTING	LEGEND - PLAN	PROPOSED	EXISTING	LEGEND - PLAN	PROPOSED

**LOCATION APPROVED UNDERGROUND STRUCTURES**

DATE: \_\_\_\_\_

**NOTE:** LOCATION OF UNDERGROUND STRUCTURES AS SHOWN ARE BASED ON THE BEST INFORMATION AVAILABLE BUT NO GUARANTEE IS GIVEN THAT ALL EXISTING UTILITIES ARE SHOWN OR THAT THE GIVEN LOCATIONS ARE EXACT. CONFIRMATION OF EXISTENCE AND EXACT LOCATION OF ALL SERVICES MUST BE OBTAINED FROM THE INDIVIDUAL UTILITIES BEFORE PROCEEDING WITH CONSTRUCTION.

BM 26-03	Bolt in 14.3 m Conc. pile, 2.2 m S. of N.L. of Inkster Blvd., and on W.L. of Atkins St.		
ELEV 230.992 m			
1	ISSUED FOR ADDENDUM 1	25/01/13	RPB
0	ISSUED FOR TENDER	24/12/18	RPB
No.	REVISIONS	YY/MM/DD	BY

**Stantec**  
500 - 311 Portage Avenue, Winnipeg MB Canada R3B 2B9  
Tel. 204.489.5900 Fax. 204.453.9012 www.stantec.com

DESIGNED BY	RPB	CHECKED BY	GFC
DRAWN BY	KMB	APPROVED BY	RPB
RELEASED FOR CONSTRUCTION			
HOR SCALE	1:250	DATE	DECEMBER 18, 2024
VERT SCALE	1:10	DATE	

PROFESSIONAL'S SEAL
ORIGINAL DRAWING REV No. 0
SEALED BY: R.P. BRUCE
2024-12-18
CONSULTANT FILE NAME 2303678-inkster WB-PP-REHAB_2.dwg

**THE CITY OF WINNIPEG**  
PUBLIC WORKS DEPARTMENT  
ENGINEERING DIVISION

**2025 REGIONAL STREET RENEWALS**

**WESTBOUND INKSTER BOULEVARD  
PARR STREET TO MCKENZIE STREET**

**PAVING AND GRADING**  
STA 1+930 TO STA 2+060

CITY DRAWING NUMBER	P-3586-15
SHEET	15 OF 21
DRAWING NUMBER	15