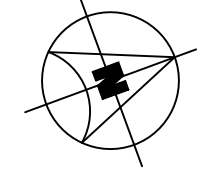
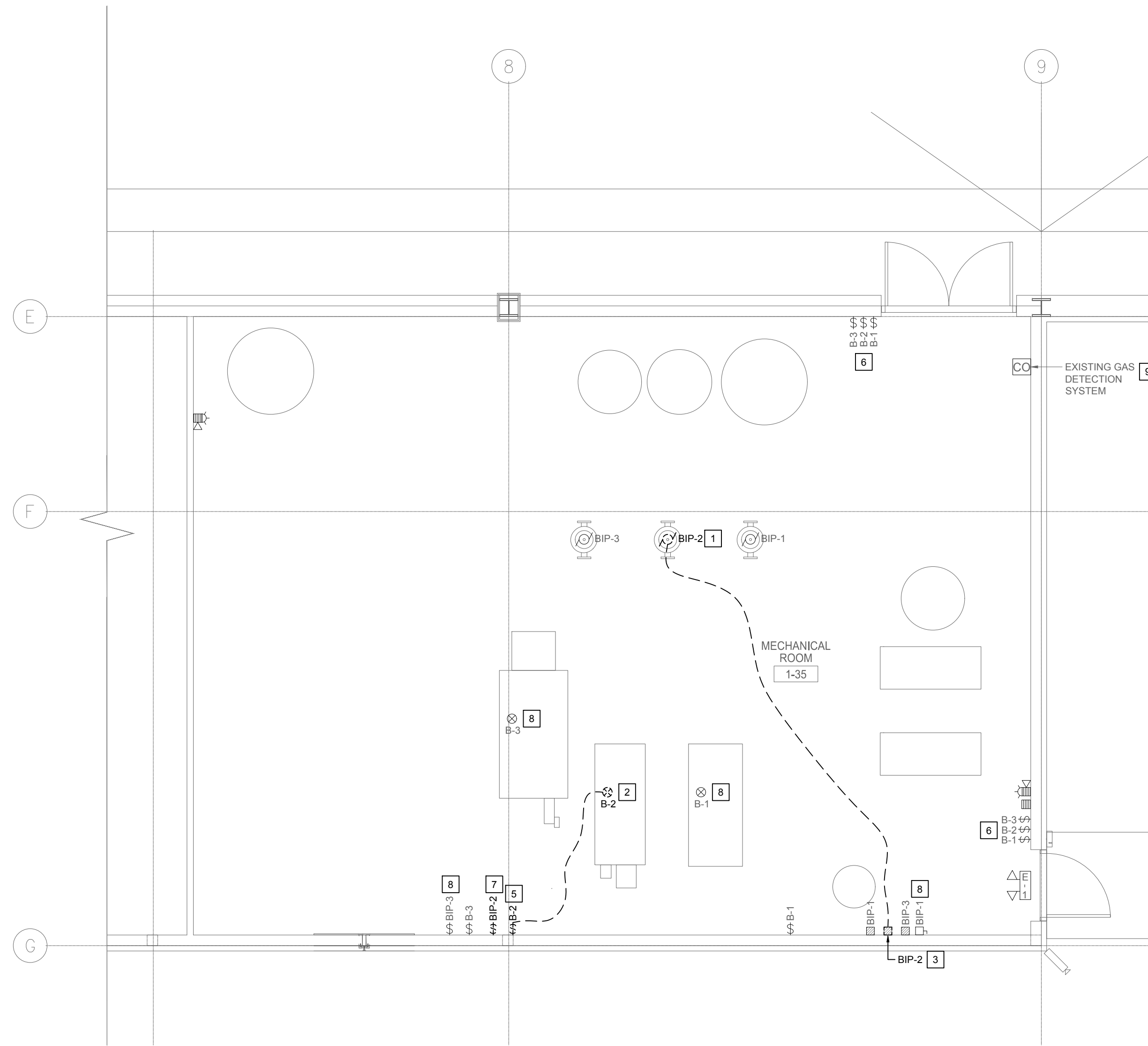


**1 PARTIAL MAIN FLOOR PLAN - ELECTRICAL - DEMOLITION PART A**  
E101 SCALE: 1:50



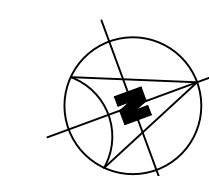
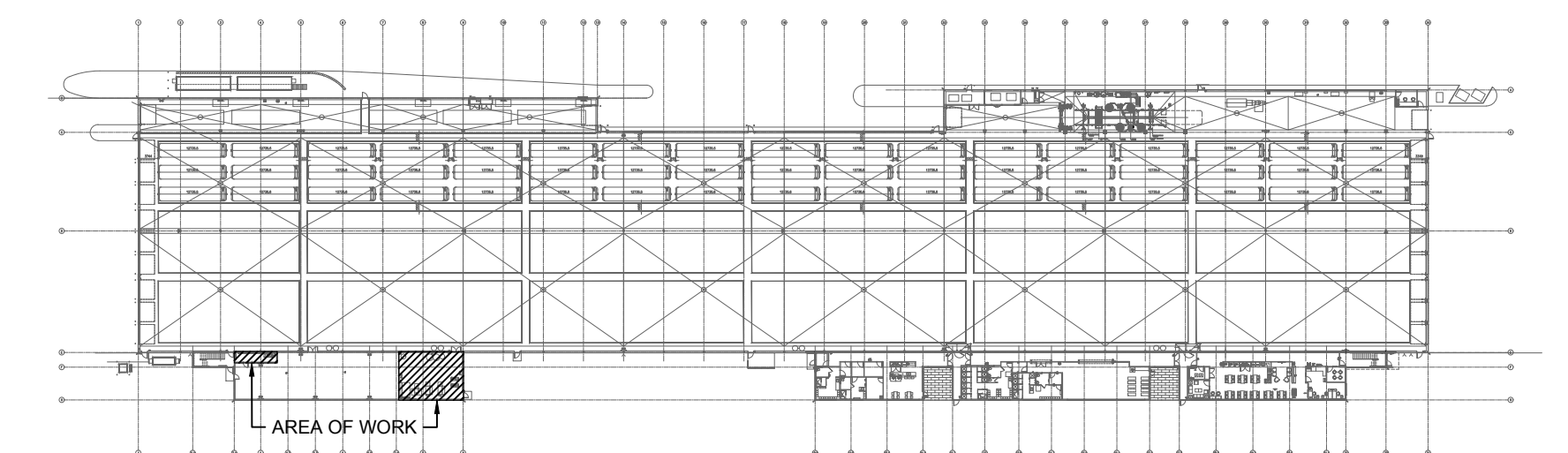
**1 PARTIAL MAIN FLOOR PLAN - ELECTRICAL - DEMOLITION PART B**  
E101 SCALE: 1:50

**GENERAL NOTES**

- A. CONTRACTOR TO VISIT SITE DURING BID AND VERIFY ALL EXISTING SERVICES ON SITE PRIOR TO SUBMITTING BID. REPORT ANY DISCREPANCIES TO CONSULTANT DURING BID PERIOD.
- B. ALL EXISTING ELECTRICAL OUTLETS, CONDUITS, WIRING ETC. REQUIRED TO BE REMOVED ARE NOT NECESSARILY SHOWN ON THIS DRAWING. CONTRACTOR SHALL REMOVE ALL UNNECESSARY EXISTING ELECTRICAL OUTLETS, WIRING CONDUIT ETC. IN PORTIONS OF EXISTING BUILDING WHICH ARE BEING ALTERED AND REMODELED. ANY ELECTRICAL OUTLETS, WIRING ETC. ADJACENT TO THE AREA BEING RENOVATED WHICH ARE NECESSARY FOR THE OPERATION OF THE EXISTING BUILDING SHALL BE RELOCATED AS REQUIRED AND RECONNECTED TO SUIT. CONTRACTOR TO ADVISE GENERAL CONTRACTOR TO PATCH, REPAIR AND PAINT EXISTING WALLS WHERE EXISTING ELECTRICAL DEVICES HAVE BEEN REMOVED (INSTALLATION OF BLANK COVERPLATES OVER ABANDONED OUTLETS IS NOT ACCEPTABLE, UNLESS NOTED OTHERWISE).
- C. ALL EQUIPMENT, DEVICES, FIXTURES REMOVED UNDER DEMOLITION SCOPE WILL BE FIRST OFFERED TO THE CITY FOR REFUSAL FOLLOWED BY CONTRACTOR AND FINALLY TO BE LEGALLY DISPOSED OF.
- D. FOR ALL EXISTING ELECTRICAL DEVICES, EQUIPMENT, ETC. THAT ARE TO BE REMOVED, REMOVE EXISTING CONDUIT, WIRING, ETC. BACK TO SOURCE UNLESS NOTED OTHERWISE.
- E. CO-ORDINATE FULLY WITH MECHANICAL FOR THE SEQUENCE OF DEMOLITION AND CONSTRUCTION. REFER TO MECHANICAL DRAWINGS FOR PHASING OF WORK.
- F. CO-ORDINATE WITH THE CITY PRIOR TO SHUT-DOWN OF EQUIPMENT.

**DEMOLITION KEY NOTES**

- 1. DISCONNECT AND REMOVE WIRE, CONDUIT, ETC. ASSOCIATED WITH EXISTING PUMP BIP-2. COORDINATE REMOVAL WITH MECHANICAL CONTRACTOR.
- 2. DISCONNECT AND REMOVE WIRING ASSOCIATED WITH EXISTING BOILER B-2 DEVICES: LOW WATER CUTOFF (LWCO), AND HILIMIT SWITCH. COORDINATE REMOVAL WITH MECHANICAL CONTRACTOR.
- 3. EXISTING STARTER FOR BIP-2 TO REMAIN. REMOVE EXISTING MOTOR OVERLOAD LOCATED IN STARTER ENCLOSURE. RE-USE RESET ADAPTER ACCESSORY FOR NEW INSTALLATION. TURN-OVER DEVICE TO THE CITY. REFER TO NEW CONSTRUCTION FOR FURTHER INFORMATION.
- 4. BREAKERS IN 'PANEL A' ASSOCIATED WITH DEMOLISHED BIP-2 AND B-2 TO REMAIN AS SPARE. UPDATE PANEL DIRECTORY.
- 5. DISCONNECT AND REMOVE WIRING ASSOCIATED WITH EXISTING BOILER B-2 BACK TO EXISTING PANEL. SWITCH OUTLET BOX AND CONDUIT TO PANEL TO BE RE-USED. SWITCH TO BE REPLACED WITH SUITABLE RATING. COORDINATE REMOVAL WITH MECHANICAL CONTRACTOR.
- 6. EXISTING BOILER B-2 EMERGENCY SHUTDOWN SWITCHES TO REMAIN. RE-USE SWITCH TO SHUT DOWN NEW BOILER. RECONFIGURE WIRING AS REQUIRED. REFER TO NEW CONSTRUCTION FOR FURTHER INFORMATION.
- 7. DISCONNECT AND REMOVE EXISTING GENERAL PURPOSE SWITCH ASSOCIATED WITH BIP-2. PROVIDE BLANK COVERPLATE.
- 8. EXISTING BOILER B-1, B-3 AND ASSOCIATED PUMPS/SWITCHES/STARTERS TO REMAIN AS IS.
- 9. EXISTING GAS DETECTION SYSTEM (INTERCONNECTED WITH FIRE ALARM) TO REMAIN AS IS.



**KEY PLAN**  
N.T.S.

FILE NAME AND PATH: G:\PROJECTS\2024\24-214 Transit Brandon Garage Boiler 2 Replacement\3.0 CAD\Revit3.4\Bldg\24\_110\_CAD\_1.dwg  
LAYOUT: E101 LAST SAVED BY: asmm DATE PLOTTED: October 20, 2022 10:12:54 AM

A	ISSUED FOR REVIEW	AS	13/09/24	 <b>ENGINEERS GEO-SCIENTISTS MANITOBA</b> Certificate of Authorization <b>SMS Engineering Ltd.</b> No. 166		 770 Bradford Street Winnipeg, Canada (204) 775-0291 smseng.com	Project Title <b>WINNIPEG TRANSIT BRANDON GARAGE BOILER #2 REPLACEMENT</b>	Drawing Title <b>PARTIAL MAIN FLOOR PLAN - ELECTRICAL - DEMOLITION</b>	Drawn By WPD Checked By AS Approved By AS Scale AS NOTED Date SEPTEMBER 2024 Project No. 24-214-01	Revision Number <b>A</b> Drawing Number  Sheet Order 2 OF 3
LETTER OR NUMBER	DESCRIPTION	BY	DD/MM/YY							