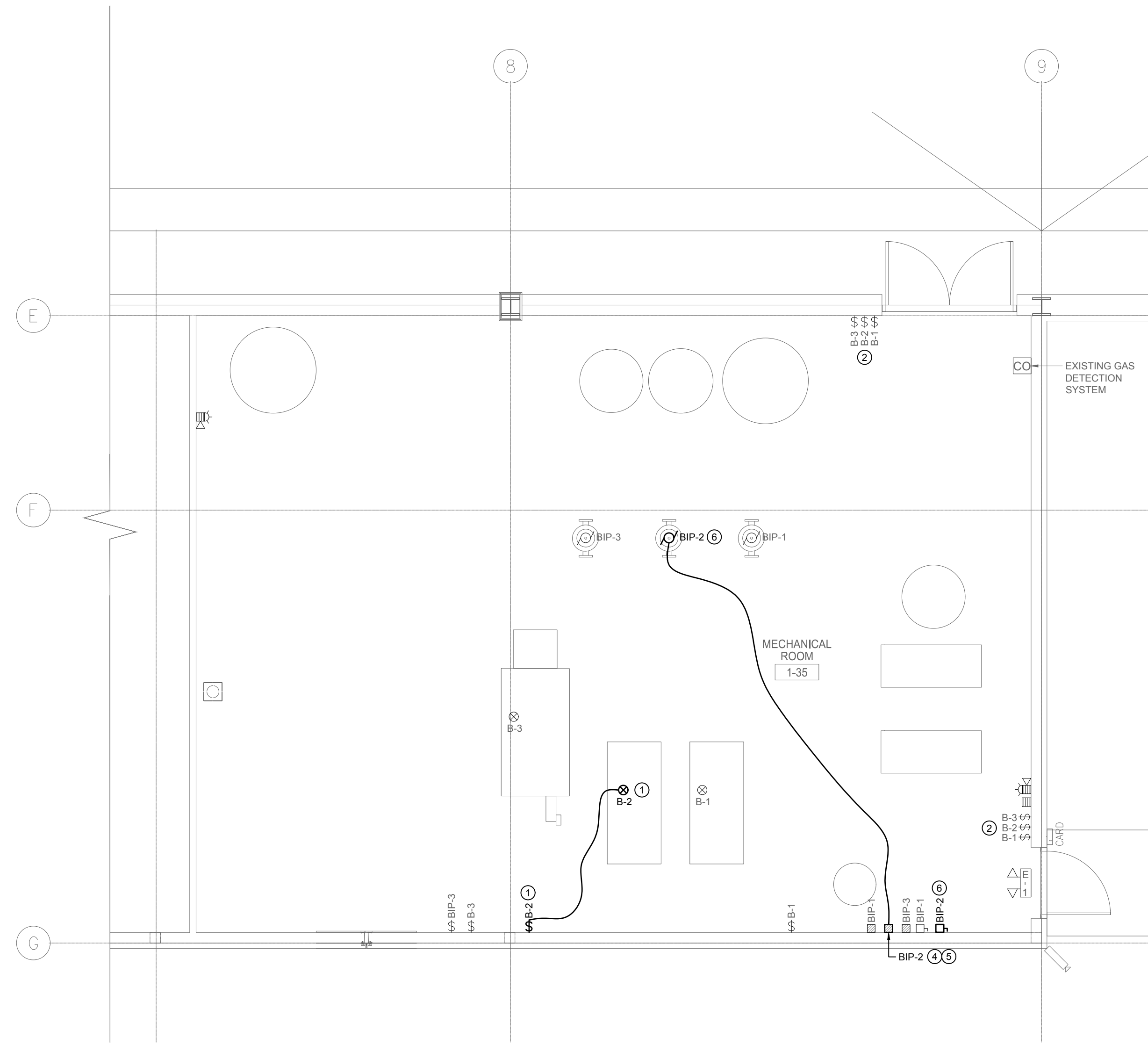


1 PARTIAL MAIN FLOOR PLAN - ELECTRICAL - NEW CONSTRUCTION PART A
 E102 SCALE: 1:50



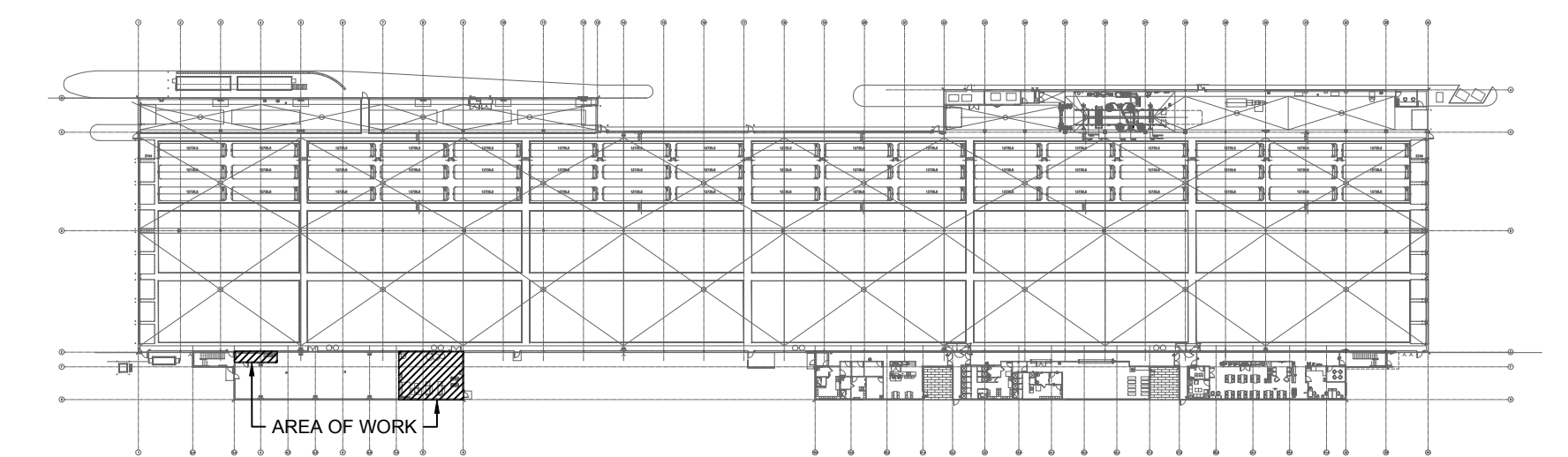
2 PARTIAL MAIN FLOOR PLAN - ELECTRICAL - NEW CONSTRUCTION PART B
 E102 SCALE: 1:50

GENERAL NOTES

- A. CONTRACTOR TO VISIT SITE DURING BID AND VERIFY ALL EXISTING SERVICES ON SITE PRIOR TO SUBMITTING BID. REPORT ANY DISCREPANCIES TO CONSULTANT DURING BID PERIOD.
- B. CONTRACTOR SHALL BE RESPONSIBLE FOR COORDINATING EXACT LAYOUT, ROUTING, ETC. VERIFY EXISTING SERVICES ON SITE.
- C. VERIFY ALL EXISTING EQUIPMENT BEING RE-USED ARE WORKING PRIOR TO INSTALLATION. SUPPLY NEW EQUIPMENT IF NECESSARY.
- D. CONTRACTOR TO DETERMINE EXACT CABLE ROUTES ON SITE. WHERE POSSIBLE FOLLOW EXISTING CABLE ROUTES THROUGH BUILDING. RE-USE EXISTING WALL OPENINGS AND PENETRATIONS TO ROUTE CABLES. PROVIDE NEW PENETRATIONS WHERE EXISTING CANNOT BE RE-USED. SEAL ALL PENETRATIONS.
- E. SEAL ALL PENETRATIONS THROUGH FIRE RATED WALLS WITH FIRE STOP MATERIALS AS REQUIRED TO MAINTAIN ASSEMBLY RATING.
- F. CONTRACTOR TO COORDINATE WITH MECHANICAL FOR SEQUENCE OF DEMOLITION AND CONSTRUCTION.
- G. COORDINATE WITH THE CITY PRIOR TO SHUT DOWN OF EQUIPMENT.
- H. PROVIDE LIQUID TIGHT CONNECTORS ON ALL CONNECTIONS.
- I. FINAL CONNECTIONS TO EQUIPMENT AND INTER-CONNECTIONS BETWEEN EQUIPMENT WHERE NECESSARY ARE TO BE MADE BY ELECTRICAL CONTRACTOR.
- J. CONFIRM ALL EQUIPMENT CONNECTIONS AND ELECTRICAL REQUIREMENTS WITH EQUIPMENT SUPPLIER PRIOR TO ROUGH-IN. MAKE ADJUSTMENTS AND INSTALL AS PER SUPPLIERS REQUIREMENTS AT NO ADDITIONAL CHARGE.
- K. ALL CONTROL WIRING BY MECHANICAL CONTRACTOR.
- L. PATCH AND REPAIR SURFACES AS REQUIRED.

KEY NOTES

- 1. NEW BOILER B-2 PROVIDED BY MECHANICAL. ELECTRICAL CONTRACTOR TO WIRE AND CONNECT BOILER TO A NEW 25A-120V CIRCUIT IN PANEL A. PROVIDE NEW 30A-120V HEAVY DUTY RATED GENERAL PURPOSE SWITCH.
- 2. RE-WIRE AND CONNECT EXISTING BOILER EMERGENCY SHUT DOWN SWITCH TO NEW BOILER B-2 AS REQUIRED. VERIFY OPERATION AFTER INSTALLATION.
- 3. PROVIDE NEW BREAKERS FOR NEW PUMP BIP-2 AND B-2. BREAKERS TO MATCH EXISTING IN ALL RESPECTS. UPDATE PANEL DIRECTORY. REFER TO SINGLE LINE DIAGRAM FOR FURTHER DETAILS.
- 4. PROVIDE NEW WIRE, CONDUIT, ETC. TO CONNECT NEW 15A-3P BREAKER TO EXISTING STARTER. APPROXIMATE DISTANCE IS 35 METERS. REFER TO SINGLE LINE DIAGRAM FOR FURTHER DETAILS.
- 5. PROVIDE NEW ALLEN-BRADLEY OVERLOAD RELAY 193-1EEDB, OR APPROVED EQUIVALENT. TO BE LOCATED IN STARTER ENCLOSURE ASSOCIATED WITH BIP-2. RE-USE RESET ADAPTER FOR EXTERNAL RESET. ADJUST TRIP SETTING AS PER CSA C22.1 RULE 28-306.
- 6. WIRE AND CONNECT NEW MOTOR FOR BIP-2 SUPPLIED BY MECHANICAL TO NEW STARTER. PROVIDE LOCAL DISCONNECT SWITCH.



KEY PLAN
 N.T.S.

FILE NAME AND PATH: G:\PROJECTS\2024\24-11 Transp Brandon Garage Boiler 2 Replacement\3.0 CAD\Revit3.4 E102\24_E102.dwg
 LAYOUT: E102
 LAST SAVED BY: asmm
 DATE PLOTTED: October 20, 2022 10:12:54 AM

A	ISSUED FOR REVIEW	AS	13/09/24	 ENGINEERS GEOSCIENTISTS MANITOBA Certificate of Authorization SMS Engineering Ltd. No. 166		 SMS Engineering 770 Bradford Street Winnipeg, Canada (204) 775-0291 smseng.com	Project Title WINNIPEG TRANSIT BRANDON GARAGE BOILER #2 REPLACEMENT	Drawing Title PARTIAL MAIN FLOOR PLAN - ELECTRICAL - NEW CONSTRUCTION	Drawn By WPD Checked By AS Approved By AS Scale AS NOTED Date SEPTEMBER 2024 Project No. 24-214-01	Revision Number A Drawing Number Sheet Order 3 OF 3
	LETTER OR NUMBER	DESCRIPTION	BY							