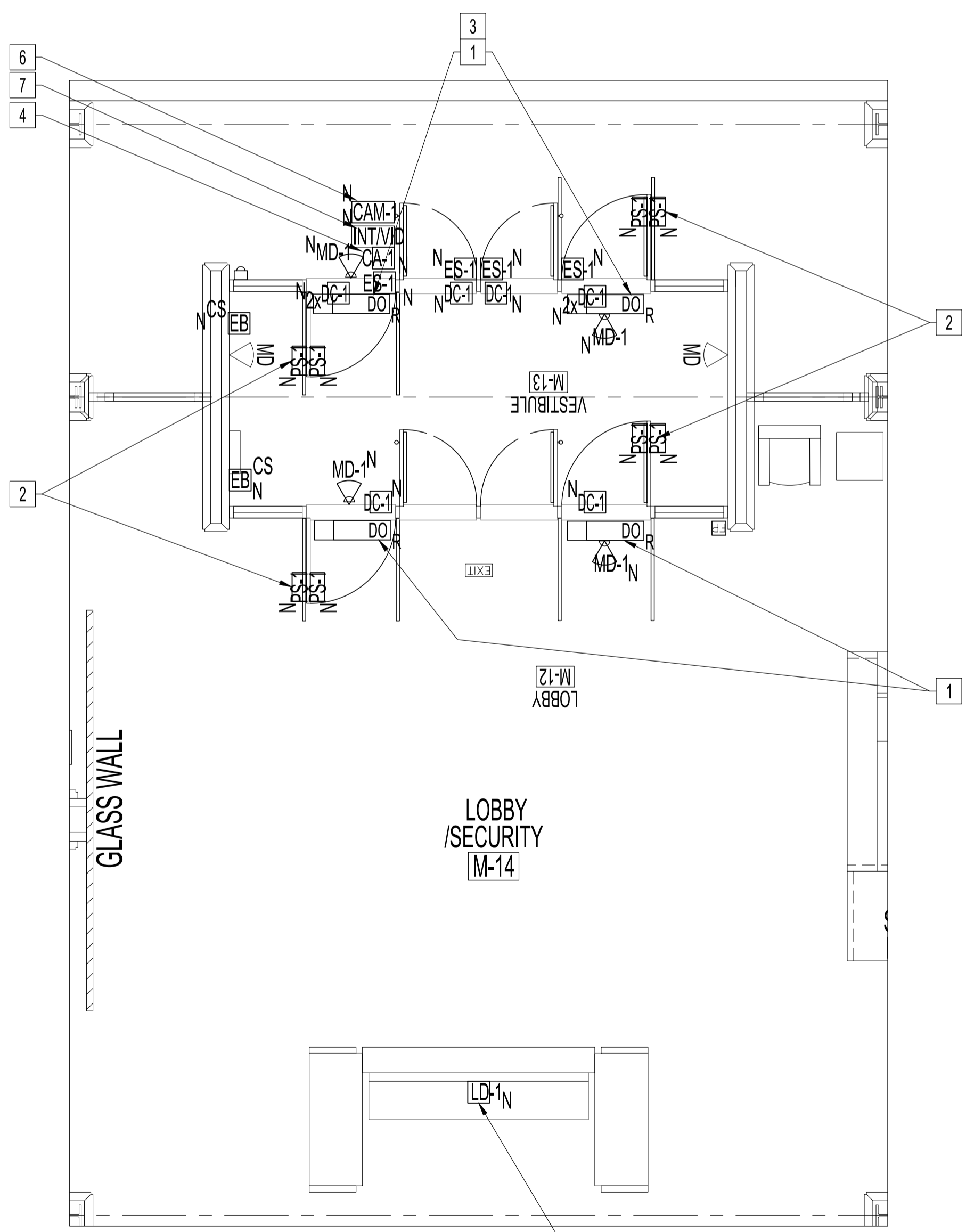


MAIN FLOOR PLAN - COUNCIL DEMO
SCALE: 1/8"=1'-0"

- POWER AND SYSTEMS DEMOLITION NOTES: "X"**
- ALSO SEE NOTES & SPECIFICATIONS.
REFER TO APPLICABLE RENOVATION DRAWING FOR RELOCATED COMPONENTS.
ALL ABANDONED CABLES TO BE REMOVED AS REQUIRED BY LATEST CANADIAN ELECTRICAL CODE.
DO NOT DISTURB OR DISCONNECT ANY WIRING & CABLING IN AREA OF WORK REQUIRED FOR OTHER AREAS.
- REMOVE ALL EXISTING DOOR MOUNTED ELECTRICAL DEVICES/WIRING BACK TO SOURCE. RETURN DEVICES TO THE CITY FOR SPARE PARTS.
 - ALL EXISTING DOOR OPERATORS (DO) TO BE REUSED, RECONNECTED TO EXISTING CIRCUIT & RECONFIGURED TO WORK WITH NEW CARD ACCESS SYSTEM & LOCK-DOWN. SEE RENOVATION NOTES.
 - REMOVE (INT), (DB) & WIRING BACK TO SOURCE.

- ELECTRICAL POWER & SYSTEMS RENOVATION NOTES: "X"**
- ALSO SEE NOTES & SPECIFICATIONS.
ALL WIRING & CABLING SHALL BE CONCEALED IN DOOR/TRANSOM FRAMES &/OR IN WALL CAVITY FOR FINISH SPACE (EG. OFFICES, CORRIDORS...).
ALL HOLES DRILLED IN STONE WALLS MUST BE DRILLED THROUGH MORTAR NOT STONE. ALL NEW WIRING & CABLING IN CEILING SPACE SHALL BE IN EMT AS PER LATEST CEC. PROGRAMMING OF CONTROLLERS NETWORK IPs & CARD ACCESS SERVER BY CITY OF WINNIPEG - FST SECTION. SUPPLY & PROGRAMMING OF KEY CARDS BY THE CITY. COMMISSION CARD ACCESS SYSTEM TO FULLY OPERATE.

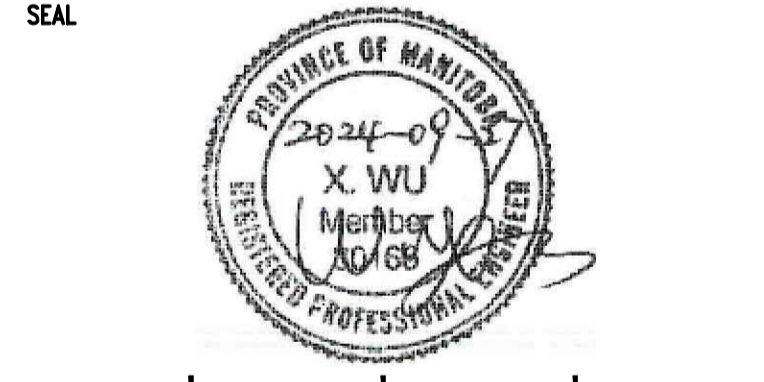
- DOOR OPERATOR (DO)
 - REINSTALL ALL (4) DOOR OPERATORS (DO) WITH EXISTING BRANCH CIRCUITS & RECONFIGURE WIRING/ CONTROLS TO OPERATE WITH NEW CARD ACCESS & LOCKDOWN SYSTEM. PROVIDE CAMDEN DOOR INTERFACE RELAY CX-12 PLUS TO ELIMINATE BINDING OF LOCKED EXTERIOR DOORS. BY DELAYING EXTERIOR (DO) UNTIL (ES-1) DEACTIVATES FIRST.
 - THE (2) INTERIOR (DO) SHALL NOT BE CONNECTED TO THE NEW LOCKDOWN SYSTEM.
 - PROVIDE (MD-1) FOR EACH (DO). LOCATION TBD.
 - LABEL ALL (DO) WITH BRANCH CIRCUIT & DOOR DESIGNATION.
- PROVIDE PRESENCE SENSORS (PS-1) & INSTALL ON THE TOP RAIL ON BOTH SIDES OF THE DOOR LEAF AS CLOSE AS POSSIBLE TO THE CLOSING LEAF, 3/4". THE (PS-1) TRANSMITTER SHALL BE PLACED NEXT TO THE DOOR EDGE. TURN THE (PS-1) MODULE IF NECESSARY. WIRE ONE (PS) MODULE TO THE DOOR CONTROLLER AS MASTER & PLUG-IN SLAVE CABLE BETWEEN BOTH (PS-1) MODULES FOR INTENDED DOOR SWING ACT. EACH (PS-1) HAS TWO RELAYS. SET TO FUNCTION. CALIBRATE EACH (PS-1) & PERFORM DOOR SAFETY CHECK. PROVIDE SIST POWER TRANSFER LOOPS.
- PROVIDE EXTRA (DC-1) FOR EACH EXTERIOR (DO) TO FUNCTION WITH EXISTING INTRUSION SYSTEM. INSTALL IN FACTORY PREP 1" DIA. TOP DOOR FRAME OPENINGS.
- CARD ACCESS
 - NOTE: COUNCIL BUILDING FRONT DOORS ARE CONTROLLED BY EXISTING CONTROLLER (010-510 MAIN COUNCIL EAST CB60) & SHALL BE USED FOR NEW CARD ACCESS.
 - PROVIDE (ES-1) & (DC-1) AS SHOWN. MOUNT (ES-1) ONTO VERTICAL DOOR FRAME WITH (ES-1) & (DC-1) WIRING CONCEALED IN DOOR FRAMES, CEILING SPACES & WALL CAVITIES. IF SURFACE-MOUNTED WIRING IS REQUIRED. USE LEGRAND RACEWAY COMPONENTS COLOUR TO BLEND IN & MINIMUM PATHWAY OPTIC. MAXIMUM LATCH PROJECTION ON RIM EXIT DEVICE IS ESSENTIAL TO OBTAINING FULL HOLDING FORCE ON (ES-1).
 - PROVIDE (CA-1) AS SHOWN. MOUNT AT DOOR LATCH CENTERLINE HEIGHT ON LATCH SIDE OF DOOR FRAME OR AS SHOWN.
 - PROVIDE HOME RUN HONEYWELL PROFUSION ACCESS CONTROL CABLE 2195 (RISER RATED, FT4) IN EMT FROM EXISTING CARD ACCESS CONTROL PANEL TO THE FURTHEST CARD ACCESS DEVICE CONNECTION. TERMINATE ALL DEVICES TO CARD ACCESS CONTROLLER & MODULE(S), ASSOCIATED COMPONENTS & CONFIGURE TO FUNCTION. LABEL ACCESS CONTROL CABLES WITH DOOR DESIGNATIONS AT DOOR LOCATIONS & AT CONTROL PANEL. ALL (4) HONEYWELL PROFUSION ACCESS CONTROL JACKETED CABLES TO BE TERMINATED PER FOLLOWING:
 - ALL WIRE CONNECTORS SHALL BE:
 - 4.4.1.1. B-WIRE GEL FILLED CONNECTORS FOR EXTERIOR OR INTERIOR USE.
 - 4.4.1. DOOR ELECTRIC STRIKE (ES-1) 184 STR (SETUP FOR FAIL-SECURE) INSTALL WITH STRIKE SURGE PROTECTION AT DEVICE END.
 - 4.4.2. CARD ACCESS READER (CA-1) 226 STR OAS
 - 4.4.3. DOOR CONTACT (DC-1) 222 STR
 - 4.4.3.1. DOOR CONTACTS (DC-1) WIRED WITH A 4-STATE, DOUBLE END-OF-LINE 1k RESISTORS IN THE NIC STATE. (DC-1) IN DOOR FRAME HEADER.
 - 4.4.3.2. PROVIDE MAGNET & INSTALL ONTO DOOR TOP CHANNEL TO ALIGN WITH (DC-1).
 - 4.4.4. REQUEST TO EXIT (RTE) 224 STR. NOT REQUIRED BUT COIL-UP SUFFICIENT LENGTH IN CEILING SPACE OR ELECTRICAL BOX FOR FUTURE INSTALL & LABEL.
 - LOCKDOWN (SUPERVISED & MONITORED)
 - SEQUENCE OF OPERATION
 - WHEN LOCKDOWN "RED" BUTTON IS PUSHED
 - 5.1.1.1. ALL (4) EXTERIOR VESTIBULE DOORS WILL BE LOCKED VIA (ES-1). EGRESS IS VIA RIM EXIT DEVICES (BY ARCHITECTURAL). INGRESS DOORS HAVE RIM EXIT DEVICE WITH THUMB KEY LOCK LATCH. EGRESS DOORS HAVE RIM EXIT DEVICE WITH PULL.
 - 5.1.1.2. EXTERIOR DOORS & (CA-1) WILL BE PLACED INTO "LOCKED MODE" INCLUDING DISABLING (DO) & (MD-1). VALID ACCESS CARDS CANNOT UNLOCK THE CARD READER (CA-1).
 - 5.1.1.3. A SILENT ALARM IS SENT TO CENTRAL CONTROLS.
 - PROVIDE (LD-1) WITH DUAL E.O.L RESISTORS. INSTALL UNDER SECURITY FRONT COUNTER (EXACT LOCATION TBD).
 - WIRE (LD-1) TO EXISTING BOSCH INTRUSION PANEL ZONE. PUSHING (LD-1) RED BUTTON ACTUATES CONTACT CLOSURE & TRIGGERS INTRUSION PANEL RELAY OUTPUT; CONFIGURE TO NOTIFYING COW CENTRAL CONTROLS.
 - PROVIDE COW CENTRAL CONTROLS WITH SIMILAR (LD-1) IN THEIR SPACE (LOCATION TBC)
 - CONFIGURE THE INTRUSION ALARM OUTPUT CONTACT IN THE EXISTING CARD ACCESS POWER SUPPLY WITH FACP CUTOFF TO DISABLE POWER TO THE FAIL-SECURE (ES-1) TO LOCK ALL (4) EXTERIOR VESTIBULE DOORS INCLUDING DISABLING (DO) & (MD-1).
 - CCTV
 - PROVIDE (CAM-1) & RECONNECT HOME RUN USING EXISTING CCTV NETWORK CABLE. USE NEW NETWORK CABLE IF EXISTING IS TOO SHORT. MOUNT ABOVE (INT/VID) ON DOOR LATCH MULLION, EXACT LOCATION TBD.
 - INTERCOM/VIDEO
 - PROVIDE INTERCOMBUZZER/VIDEO CAMERA (INT/VID), VIDEO MASTER STATION & INCLUDED AIPHONE POWER SUPPLY AT SECURITY DESK. MOUNT DOOR STATION ON DOOR LATCH SIDE DOOR JAMB OR BESIDE AT 47" AFF TO PROVIDE A FACIAL VIEW. WIRE WITH 18/2 SOLID CONDUCTOR UNSHIELDED GREY FT-6 CABLE. PLENUM RATED OR NON-PLENUM RATED IN EMT TO VIDEO MASTER STATION. WIRE 18/4 STRANDED, UNTWISTED, UNSHIELDED GREY FT-6 CABLE, PLENUM RATED OR NON-PLENUM RATED IN EMT FROM VIDEO MASTER STATION TO EXISTING CARD ACCESS PANEL (LEAVE EXTRA 4 FEET COILED LENGTH IN PANEL FOR CITY TO TERMINATE & PROGRAM). MOUNT (INT/VID) ON DOOR LATCH MULLION, EXACT LOCATION TBD.



MAIN FLOOR PLAN - COUNCIL RENO
SCALE: 1/8"=1'-0"

NOTES:
REFER TO DRAWING E1 & DRAWING LISTS

No.	REVISION/DESCRIPTION	BY	DATE
0	ISSUED FOR CONSTRUCTION	D.AU	2024.06.27



DRAWN	CHECKED	DESIGNED	APPROVED
D.AU	D.AU	D.AU	D.AU

THE CITY OF WINNIPEG
ASSETS AND PROJECT MANAGEMENT
DEPARTMENT
MUNICIPAL ACCOMMODATIONS DIVISION
3-65 GARRY STREET, R3C 4K4

PROJECT
ADMINISTRATION AND COUNCIL BUILDINGS
DESIGN AND CONSTRUCTION OF
EXTERIOR DOOR REPLACEMENT
510 MAIN STREET

SHEET TITLE
COUNCIL BUILDING
PARTIAL MAIN FLOOR PLAN
ELECTRICAL - POWER AND SYSTEMS

SCALE	PROJECT No:	SHEET No:
AS SHOWN	2021-111	E2