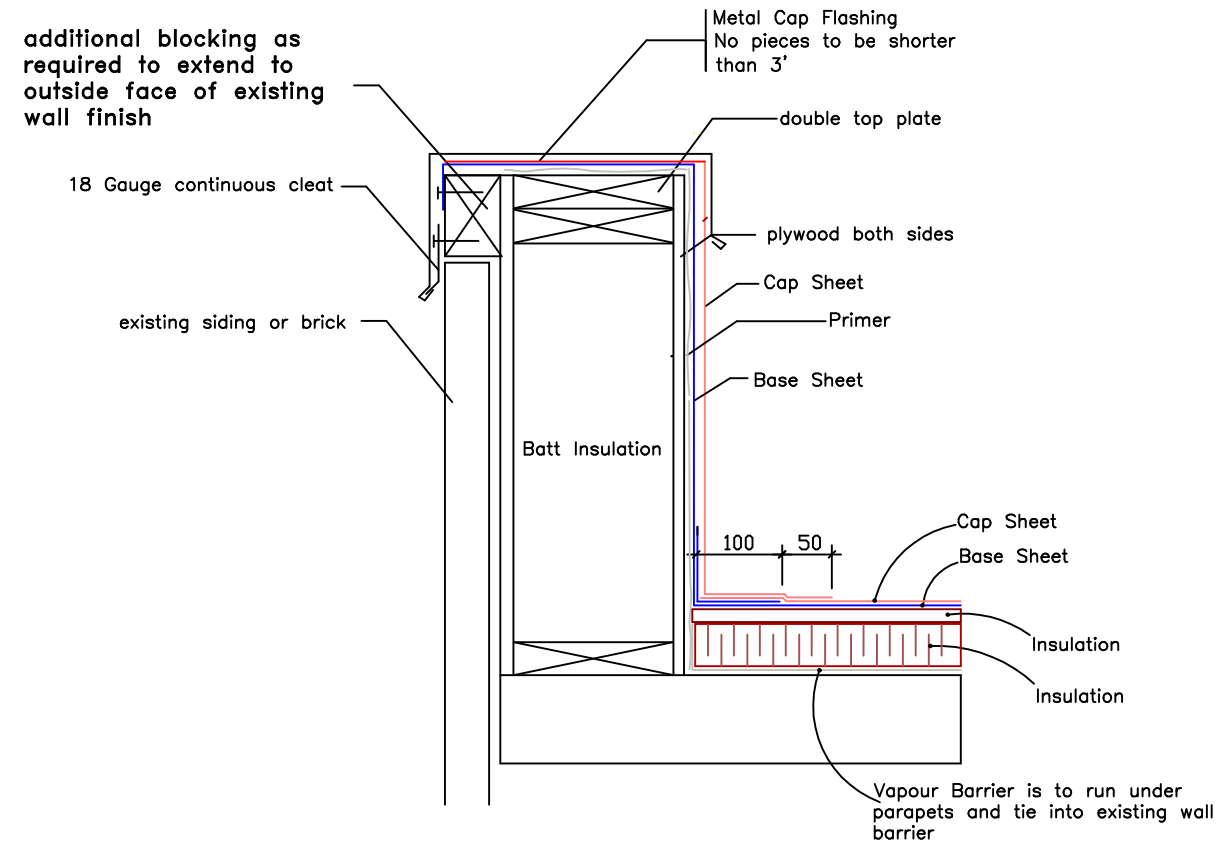
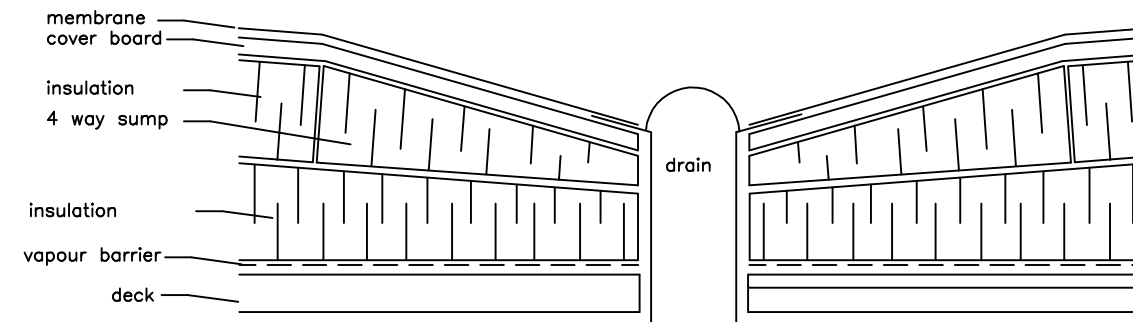


# Typical Parapet Construction

Existing wood parapets to be demolished



# Drain Sump



26 Gauge counter flashing complete with approx. 1/2" 45 degree bottom kick out is to be installed over all membrane stripping. Terminate flashing about 1" above top of new roofing. Do not install any fasteners behind the cap flashing and use only lap joints. This is to allow easy removal for future repairs.

A continuous 18 gauge galvanized cleat is to be installed to insure outside face of flashing is firmly attached to outside face whenever outside face of flashing exceeds 3". No fasteners will be accepted on the outside face.

Agassiz Consulting Group Ltd.  
Box 41, Warren, Manitoba R0C 3E0  
Office Phone: (204) 383-5538

Project: Sargent Tommy Prince Place  
90 Sinclair Street  
Winnipeg, MB

Date: September 26, 2024

Drawing No. D-1 (revision 1)

File no: 3503-24 Scale: NTS