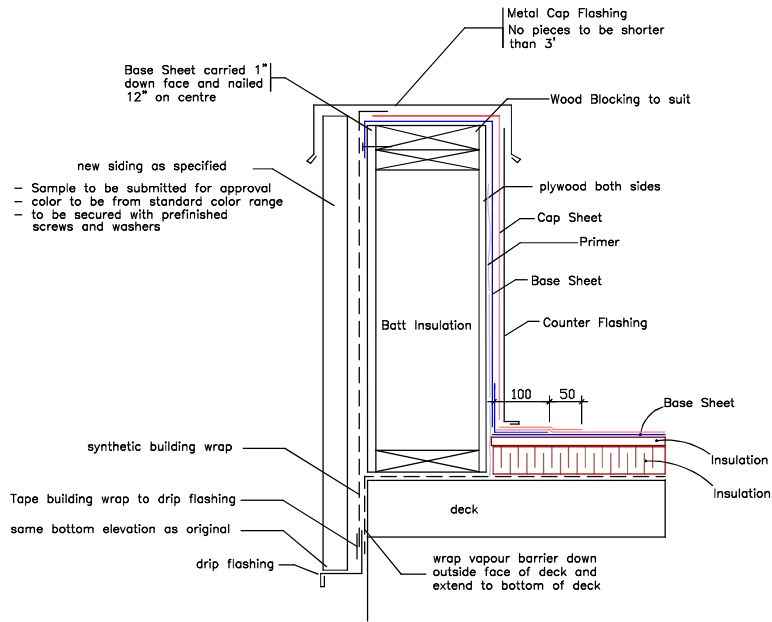


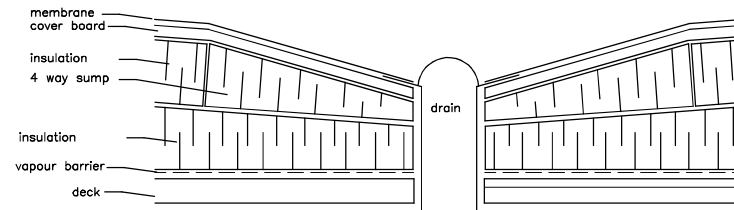
# New Parapet



26 Gauge counter flashing complete with approx. 1/2" 45 degree bottom kick out is to be installed over all membrane stripping. Terminate flashing about 1" above top of new roofing. Do not install any fasteners behind the cap flashing and use only lap joints. This is to allow easy removal for future repairs.

A continuous 18 gauge galvanized cleat is to be installed to insure outside face of flashing is firmly attached to outside face whenever outside face of flashing exceeds 3". No fasteners will be accepted on the outside face.

# Drain Sump



<b>Agassiz Consulting Group Ltd.</b> Box 41, Warren, Manitoba R0C 3E0 Office Phone: (204) 383-5538	
Project:	Sargent Tommy Prince Place 90 Sinclair Street Winnipeg, MB
Date:	August 14, 2024
Drawing No.	D-1
File no:	3503-24
Scale:	NTS