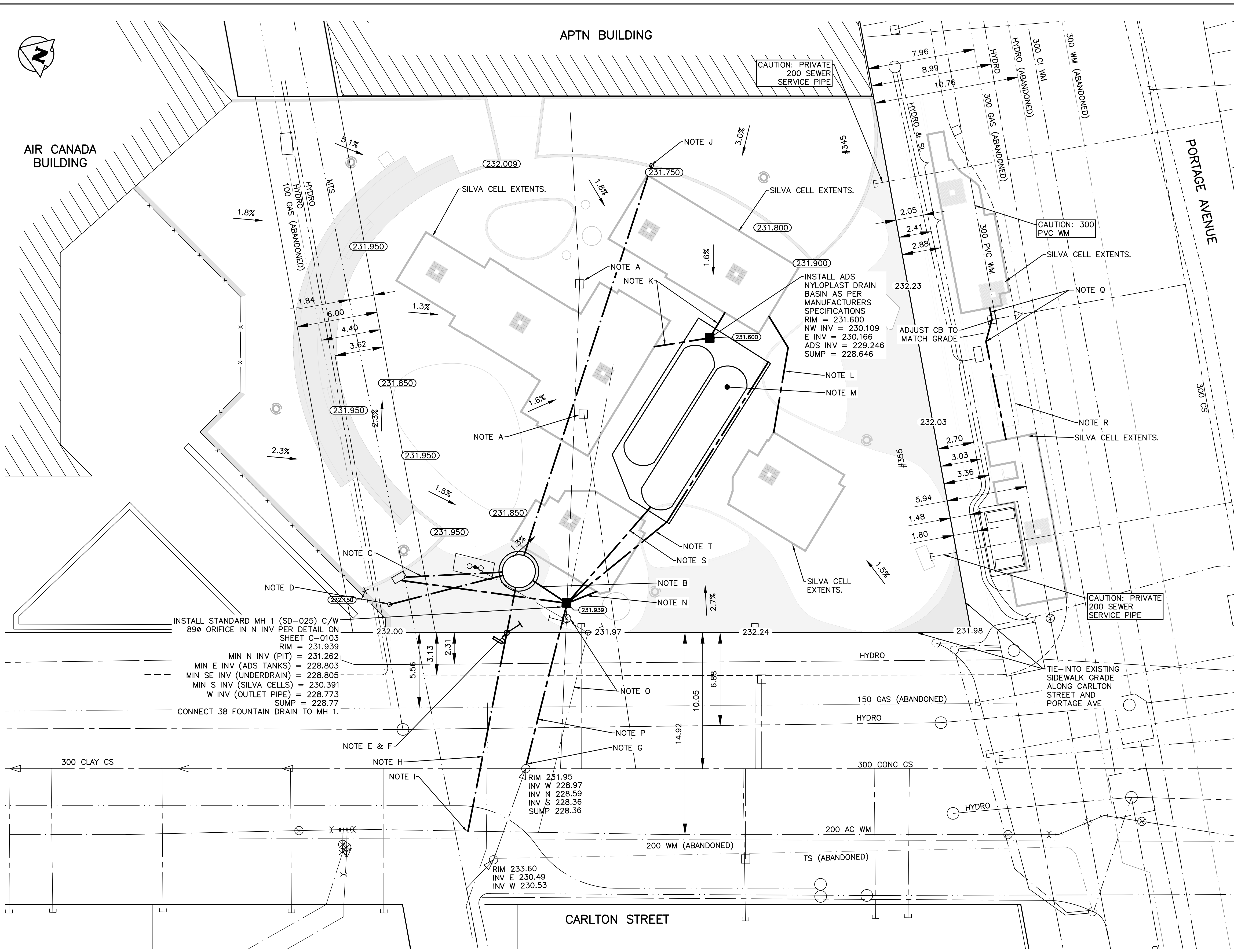


File name: U:\FMS\23-0109-004\Air Canada Park\_CAD = TabC1.0 Plotted By: Akley 24/02/09 [Fri 2:59pm] sheet size: Super A1 24" x 36" plot scale: 1:1 (metric)



**PLAN NOTES:**

- A. ABANDON EXISTING CATCH BASIN & LEAD PIPE
- B. INSTALL 3.0 - 100# NON-PERFORATED SUBDRAIN AT MIN 1% FROM MECHANICAL VAULT TO MH 1.
- C. INSTALL 7.1 - 25# COPPER WATER SERVICE LINE FROM METER TO BOTTLE FILL STATION. INSTALL 12.4 - 3# DRAIN LINE FROM BOTTLE FILL STATION TO CONNECT TO MH 1 AT MIN 1% SLOPE.
- D. INSTALL 8.7 - 25# COPPER WATER SERVICE LINE FROM PIT TO HY 500 DECK HYDRANT. OFFSET MIN 300 FROM STRUCTURAL WALL.
- E. INSTALL 3.5 - 25# COPPER WATER SERVICE LINE FROM CURB STOP TO MECHANICAL PIT (SEE MECHANICAL DRAWING M1.0). MAINTAIN MIN 2.8 DEPTH UP TO EDGE OF MECHANICAL PIT.
- F. INSTALL NEW ZINC ANODE, CURB STOP, AND CURB BOX AT PROPERTY LINE.
- G. CONNECT SEWER LINE TO EXISTING MANHOLE. E. ELEV = 228.65
- H. INSTALL 15.0 - 25# COPPER SERVICE LINE FROM 200# AC WM TO NEW CURB STOP AT PROPERTY LINE. MAINTAIN MIN 2.8 DEPTH FOR WATER SERVICE LINE. CONTRACTOR TO RESTORE SIDEWALK AND ROADWAY TO MATCH EXISTING CONDITIONS.
- I. CONNECT NEW 25# COPPER SERVICE LINE TO EXISTING 200# AC WM
- J. INSTALL 30.0 - 25# COPPER WATER SERVICE LINE FROM PIT TO HY 500 DECK HYDRANT. MIN OFFSET 300 FROM LANDSCAPING WALL.
- K. INSTALL 100# NON-PERFORATED SUBDRAIN PIPE @ MIN 1% FROM SILVA CELLS TO ADS NYLOPLAST DRAIN BASIN.
- L. INSTALL 10.0 - 100 NON-PERFORATED SUBDRAIN PIPE CONNECTING SILVA CELL BLOCKS. CONNECT TO SILVA CELL SUBDRAINS USING MANUFACTURER APPROVED COUPLER.
- M. PROVIDE 47m<sup>3</sup> OF STORAGE USING ADS STORMTECH SYSTEM (BOTTOM OF STONE ELEVATION = 228.987). INSTALL 14.0 - 100# PERFORATED SUBDRAIN ALONG SOUTH SIDE. SEE ADS DETAIL SHEETS.
- N. INSTALL 2.4 - 100# NON-PERFORATED SUBDRAIN PIPE @ MIN 1% TO CONNECT FROM SILVA CELLS TO MH 1. CONNECT TO SILVA CELL SUBDRAIN USING MANUFACTURER APPROVED COUPLER.
- O. ABANDON EXISTING WATER SERVICE LINE, EXISTING WATER METER & PIT, AND EXISTING CURB STOP. REMOVE EXISTING VALVE.
- P. INSTALL 12.3 - 250# PVC SEWER PIPE @ MIN 1%. CONNECT TO EXISTING MANHOLE ON CARLTON. CONTRACTOR TO RESTORE SIDEWALK AND ROADWAY TO MATCH EXISTING CONDITIONS.
- Q. INSTALL SUBDRAIN CONNECTING SILVA CELLS TO EXISTING CATCH BASIN IN SIDEWALK. SEE LANDSCAPE DRAWING FOR SILVA CELL AND SIDEWALK RESTORATION DETAILS. COORDINATE WITH CONTRACT ADMINISTRATOR AND TRANSIT FOR TEMPORARY BUS STOP RELOCATION DURING CONSTRUCTION.
- R. EXISTING BUS SHELTER TO BE REMOVED. CONTRACTOR TO COORDINATE WITH TRANSIT AND CONTRACT ADMINISTRATOR FOR REMOVAL AND STORAGE.
- S. INSTALL 9.5 - 250# PVC CONNECTING ADS TANKS TO NEW MH 1 @ MIN 1% SLOPE.
- T. INSTALL 9.5 - 100# NON-PERFORATED SUBDRAIN PIPE CONNECTING FROM ADS SUBDRAIN TO MH 1.

**NOTES:**

- GENERAL NOTES:**
- ALL WORK & MATERIALS TO BE IN ACCORDANCE WITH THE LATEST REVISION OF THE CITY OF WINNIPEG STANDARD CONSTRUCTION SPECIFICATIONS AS OF THREE DAYS BEFORE TENDER CLOSES. SPECIFICATIONS AS OF THREE DAYS BEFORE TENDER CLOSES.
  - CONTRACTOR TO CONFIRM THE LOCATION OF ALL UTILITIES & SERVICES IN THE FIELD PRIOR TO CONSTRUCTION.
  - ALL UTILITY DIMENSIONS ARE SHOWN TO PROPERTY LINE.
  - CONTRACTOR TO PROTECT EXISTING TREES REMAINING ON SITE WITHIN LIMITS OF CONSTRUCTION.
  - LAMP STANDARDS, HYDRO POLES, AND ANCHORS THAT REQUIRE TEMPORARY SUPPORT, REMOVAL OR REPLACEMENT, TO BE DONE AT CONTRACTORS EXPENSE.
  - INSTALL CONCRETE ISOLATIONS IN ACCORDANCE WITH CITY OF WINNIPEG STANDARDS.
  - REPLACE FRAMES & COVERS WHERE DIRECTED. ADJUST ALL WATER VALVES, HYDRANTS, MANHOLES, WATER SERVICE SHUT-OFF VALVES (CURB STOPS), & CATCH BASINS IN AREA OF WORK TO MATCH NEW GRADES.
  - CONTRACTOR TO RESTORE EXISTING SIDEWALK, CURB, AND ROAD PAVEMENT TO MATCH EXISTING CONDITION UNLESS OTHERWISE NOTED IN DRAWINGS.

**PROPERTY LIMITS DELINEATION**

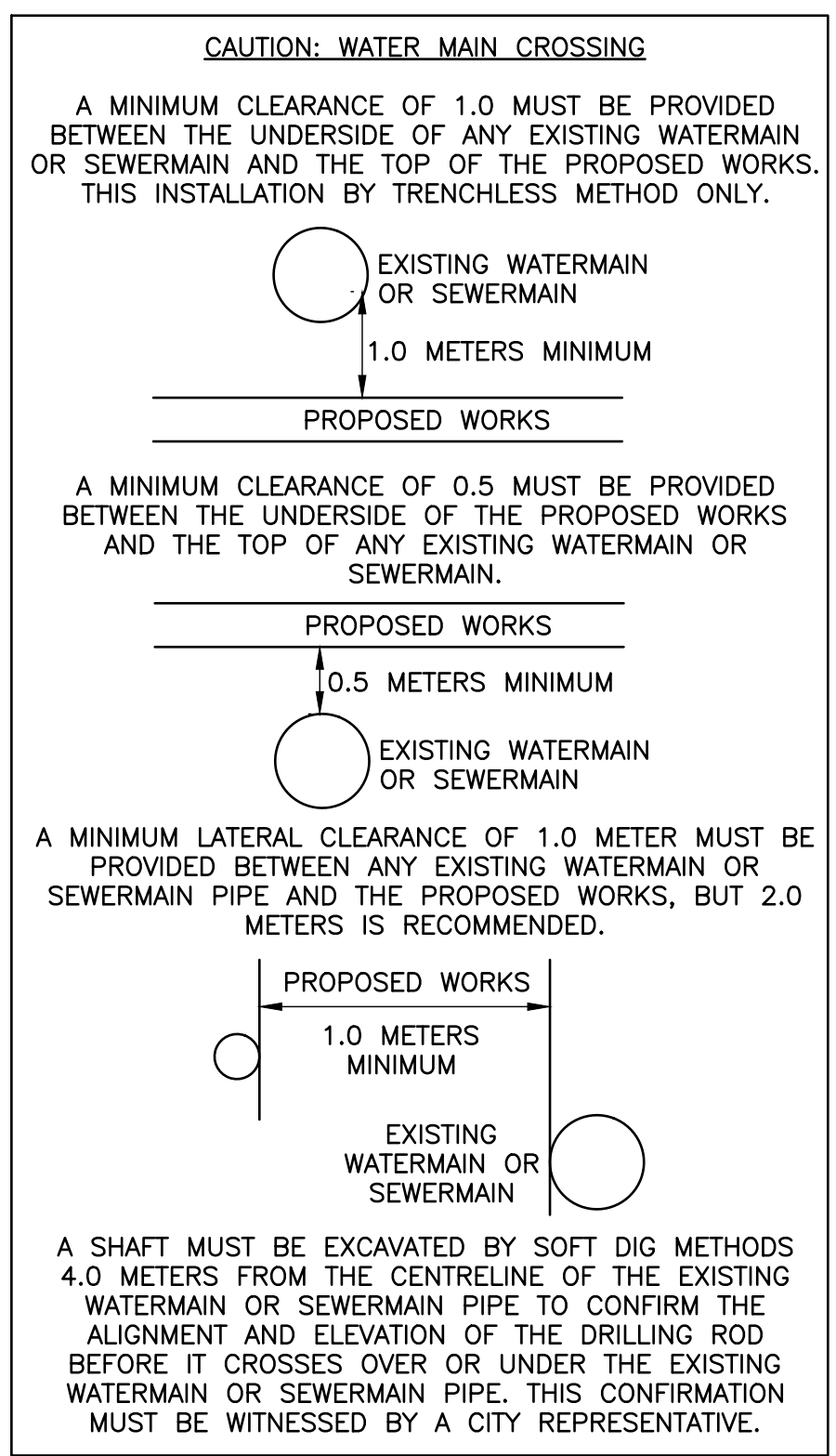
DELINEATION OF PROPERTY LIMITS AS SHOWN ON THIS DWG DOES NOT REPRESENT A "LEGAL SURVEY". KGS GROUP MAKES NO REPRESENTATION OR WARRANTY AS TO THE ACCURACY OF PROPERTY LIMITS DELINEATED ON THIS DWG, NOR ON THE DIMENSIONAL ACCURACY OF DWG FEATURES RELATIVE TO THOSE PROPERTY LIMITS.

**METRIC**

WHOLE NUMBERS INDICATE MILLIMETRES  
DECIMALIZED NUMBERS INDICATE METRES

**WARNING**

NOTIFY THE GAS COMPANY OF THE PROPOSED LOCATION OF EXCAVATION.  
TAKE PRECAUTION TO AVOID DAMAGE TO GAS COMPANY INSTALLATIONS.  
SEE PROVINCIAL REGULATION 210/72 FOR DETAILS.



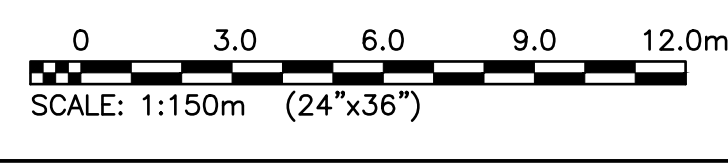
**PLAN**  
SCALE: 1:150 HOR

EXISTING	LEGEND-PLAN	PROPOSED	EXISTING	LEGEND-PLAN	PROPOSED
300 LBS	LAND DRAINAGE SEWER	300 LBS	x	FENCE	o
250 WWS	WASTE WATER SEWER	250 WWS	>	DITCH	o
---	GAS	---	---	BACK OF CURB	---
---	HYDRO	---	---	ASPHALT MILL & FILL	---
---	M.T.S.	---	---	ASPHALT	---
150 WM	WATER MAIN	150 WM	---	CONCRETE	---
+	HYDRANT	+	---	LANDSCAPING	---
o	VALVE	o	---	PROPERTY LINE	---
o	MANHOLE	o	---	TEST HOLE	---
o	CATCH BASIN	o	---	GEODETIC BENCHMARK	---
o	CURB INLET	o	---	ELEVATION	---
o	POLES	o	---	LEGEND-PLAN	---
o	GUY WIRE	o	---	PROPOSED	---
---	EXISTING	---	---	PROPOSED	---

**LOCATION APPROVED UNDERGROUND STRUCTURES**

NOTE:  
LOCATION OF UNDERGROUND STRUCTURES AS SHOWN ARE BASED ON THE BEST INFORMATION AVAILABLE BUT NO GUARANTEE IS GIVEN THAT ALL EXISTING UTILITIES ARE SHOWN OR THAT THE GIVEN LOCATIONS ARE EXACT. CONFIRMATION OF EXISTENCE AND EXACT LOCATION OF ALL SERVICES MUST BE OBTAINED FROM THE INDIVIDUAL UTILITIES BEFORE PROCEEDING WITH CONSTRUCTION.

**FOR TENDER ONLY**  
NOT TO BE USED FOR CONSTRUCTION



**ENGINEERS GEOSCIENTISTS**  
MANITOBA  
Certificate of Authorization  
KGS Group  
No. 245

BID OPPORTUNITY No. 78-2024

**SCATLIFF + MILLER + MURRAY**  
visionary urban design + landscapes

CONSULTANT FILE NAME	AIR CANADA PARK REDEVELOPMENT		
CLIENT	CITY OF WINNIPEG PLANNING, PROPERTY & DEVELOPMENT		
CITY DRAWING NUMBER	SHEET	OF	
	1	2	
MUNICIPAL	UNDERGROUND SITE SERVICING		
DESIGN	DRAWN	DATE - Y / M / D	SCALE
ALH	ALH	23/07/25	1:150
CHECKED	APPROVED	PROJECT No.	DRAWING No.
MAT	MAT	23-0109-004	C1.0