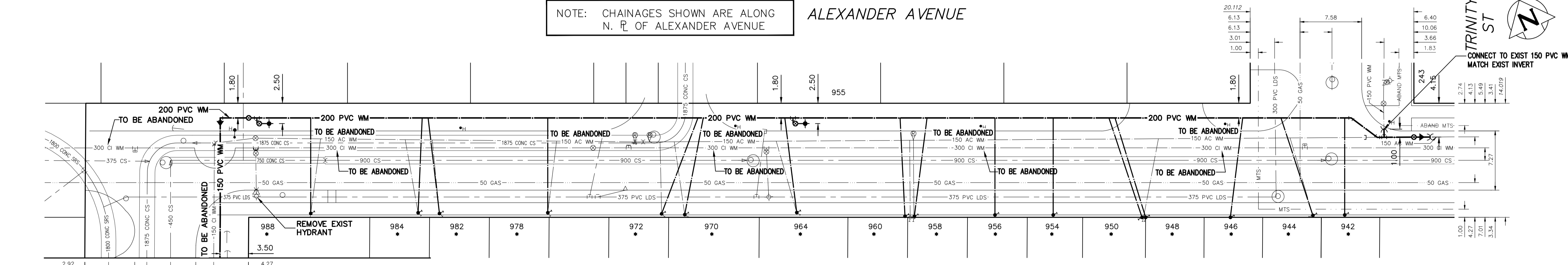


NOTE: CHAINAGES SHOWN ARE ALONG N. R. OF ALEXANDER AVENUE

ALEXANDER AVENUE



FOR CONTINUATION SEE DWG D-17146

WATER SERVICE INFORMATION

ADDRESS	SIZE (mm) MATERIAL (STREET)	SIZE (mm) MATERIAL (PROP.)	SHORT & LONG MEASUREMENT	CORP LOCATION	REMARKS
* 988 ALEXANDER AVE RESIDENTIAL	20 CU	20 CU	4.91 WEL BLDG 7.620 EEL XANTE ST	1.20 E OF S/C	RENEW TO R W/20 CU
* 984 ALEXANDER AVE RESIDENTIAL	20 CU	12 LEAD	1.68 WEL BLDG 20.810 EEL XANTE ST	1.60 W OF S/C	RENEW TO R W/20 CU
* 982 ALEXANDER AVE RESIDENTIAL	20 CU	12 LEAD	0.61 WEL BLDG 23.440 EEL XANTE ST	0.80 W OF S/C	RENEW TO R W/20 CU
* 978 ALEXANDER AVE RESIDENTIAL	20 CU	20 CU	1.17 EEL BLDG 36.750 EEL XANTE ST	1.30 E OF S/C	RENEW TO R W/20 CU
* 972 ALEXANDER AVE RESIDENTIAL	20 CU	20 CU	0.44 EEL BLDG 50.740 EEL XANTE ST	1.20 W OF S/C	RENEW TO R W/20 CU
* 970 ALEXANDER AVE RESIDENTIAL	20 CU	12 LEAD	4.32 WEL BLDG 53.590 EEL XANTE ST	0.30 W OF S/C	RENEW TO R W/20 CU
* 964 ALEXANDER AVE RESIDENTIAL	20 CU	12 LEAD	6.20 WEL BLDG 67.340 EEL XANTE ST	2.52 W OF S/C	RENEW TO R W/20 CU
* 960 ALEXANDER AVE RESIDENTIAL	12 CU	20 CU	1.90 EEL BLDG 81.290 EEL XANTE ST	OPP OF S/C	RENEW TO R W/20 CU
* 958 ALEXANDER AVE RESIDENTIAL	20 CU	20 CU	0.46 EWL BLDG 81.750 EEL XANTE ST	OPP OF S/C	RENEW TO R W/20 CU
* 956 ALEXANDER AVE RESIDENTIAL	20 CU	12 LEAD	1.68 WEL BLDG	-	RENEW TO R W/20 CU
* 954 ALEXANDER AVE RESIDENTIAL	20 CU	12 LEAD	8.19 EEL BLDG 109.960 EEL XANTE ST	1.83 E OF S/C	RENEW TO R W/20 CU Y-SERVICE WITH 950
* 950 ALEXANDER AVE RESIDENTIAL	20 CU	12 LEAD	1.59 EEL BLDG 110.220 EEL XANTE ST	1.83 E OF S/C	RENEW TO R W/20 CU Y-SERVICE WITH 954
* 948 ALEXANDER AVE RESIDENTIAL	20 CU	12 LEAD	-	-	RENEW TO R W/20 CU
* 946 ALEXANDER AVE RESIDENTIAL	20 CU	12 LEAD	-	-	RENEW TO R W/20 CU
* 944 ALEXANDER AVE RESIDENTIAL	20 CU	20 CU	1.35 EEL BLDG 130.770 EEL XANTE ST	2.80 W OF S/C	RENEW TO R W/20 CU
* 942 ALEXANDER AVE RESIDENTIAL	20 CU	20 CU	-	-	RENEW TO R W/20 CU

* 958 ALEXANDER AVE RESIDENTIAL	20 CU	20 CU	0.46 EWL BLDG 81.750 EEL XANTE ST	OPP OF S/C	RENEW TO R W/20 CU
* 956 ALEXANDER AVE RESIDENTIAL	20 CU	12 LEAD	1.68 WEL BLDG	-	RENEW TO R W/20 CU
* 954 ALEXANDER AVE RESIDENTIAL	20 CU	12 LEAD	8.19 EEL BLDG 109.960 EEL XANTE ST	1.83 E OF S/C	RENEW TO R W/20 CU Y-SERVICE WITH 950
* 950 ALEXANDER AVE RESIDENTIAL	20 CU	12 LEAD	1.59 EEL BLDG 110.220 EEL XANTE ST	1.83 E OF S/C	RENEW TO R W/20 CU Y-SERVICE WITH 954
* 948 ALEXANDER AVE RESIDENTIAL	20 CU	12 LEAD	-	-	RENEW TO R W/20 CU
* 946 ALEXANDER AVE RESIDENTIAL	20 CU	12 LEAD	-	-	RENEW TO R W/20 CU
* 944 ALEXANDER AVE RESIDENTIAL	20 CU	20 CU	1.35 EEL BLDG 130.770 EEL XANTE ST	2.80 W OF S/C	RENEW TO R W/20 CU
* 942 ALEXANDER AVE RESIDENTIAL	20 CU	20 CU	-	-	RENEW TO R W/20 CU

* SERVICES TO BE RENEWED TO R. ALL OTHERS TO BE RECONNECTED

FOR INDEX SEE D-17135

NOTE: ALL VALVES TO BE INSTALLED COUNTERCLOCKWISE TO CLOSE

WARNING
IF POWER EQUIPMENT OR EXPLOSIVES ARE TO BE USED FOR EXCAVATION ON THIS PROJECT THE CONTRACTOR MUST:
1) NOTIFY THE GAS COMPANY OF THE PROPOSED LOCATION OF EXCAVATION.
2) TAKE PRECAUTION TO AVOID DAMAGE TO GAS COMPANY INSTALLATIONS.
SEE PROVINCIAL REGULATION 210/72 FOR DETAILS

LOCATION APPROVED
UNDERGROUND STRUCTURES
SUPV. U/G STRUCTURES COMMITTEE DATE
NOTE:
LOCATION OF UNDERGROUND STRUCTURES AS SHOWN ARE BASED ON THE BEST INFORMATION AVAILABLE BUT NO GUARANTEE IS GIVEN THAT ALL EXISTING UTILITIES ARE SHOWN OR THAT THE GIVEN LOCATIONS ARE EXACT. CONFIRMATION OF EXISTENCE AND EXACT LOCATION OF ALL UTILITIES MUST BE OBTAINED FROM THE INDIVIDUAL UTILITIES BEFORE PROCEEDING WITH CONSTRUCTION.

NO.	ISSUED FOR TENDER	DATE	BY	REVISIONS
00	ISSUED FOR TENDER	2024/12/05	SC	

DESIGNED BY	CHECKED BY	DATE
RG	SC	2024 12 05
DRAWN BY	APPROVED BY	DATE
AJ	SC	2024 12 05

ENGINEER'S SEAL
S.R.J. COUNROYER
Member
22699
2024-12-06
REGISTERED PROFESSIONAL ENGINEER
Digitally signed by Stacy Courtoyer, P. Eng

THE CITY OF WINNIPEG
WATER AND WASTE DEPARTMENT
ENGINEERING DIVISION
2024 WATER MAIN RENEWALS
CONTRACT 11
ALEXANDER AVENUE
TRINITY STREET TO XANTE STREET
SHEET 6 OF 13
CITY DRAWING NUMBER
D-17139

