

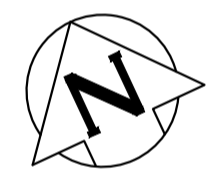
WATER SERVICE INFORMATION

ADDRESS	SIZE (mm) MATERIAL (STREET)	SIZE (mm) MATERIAL (PROP.)	SHORT & LONG MEASUREMENT	CORP LOCATION	REMARKS
1266 AIKINS ST	-	20	4.01 EWL HSE	-	RECONNECT SERVICE
RESIDENTIAL	-	CU	8.778 WWL AIKINS ST	-	SERVICED OFF OF SOUTHALL
251 SOUTHALL DR	-	20	5.03 EWL HSE	-	RECONNECT SERVICE
RESIDENTIAL	-	CU	10.848 WWL AIKINS ST	-	-
254 SOUTHALL DR	-	20	3.57 EWL HSE	-	RECONNECT SERVICE
RESIDENTIAL	-	CU	25.908 WWL AIKINS ST	-	-
255 SOUTHALL DR	-	20	4.33 EWL HSE	-	RECONNECT SERVICE
RESIDENTIAL	-	CU	27.978 WWL AIKINS ST	-	-
* 258 SOUTHALL DR	-	20	3.71 EWL HSE	-	RENEW TO R W/20 CU
RESIDENTIAL	-	CU	40.630 WWL AIKINS ST	-	-
259 SOUTHALL DR	-	20	4.47 EWL HSE	-	RECONNECT SERVICE
RESIDENTIAL	-	CU	44.194 WWL AIKINS ST	-	-
262 SOUTHALL DR	-	20	3.80 EWL HSE	-	RECONNECT SERVICE
RESIDENTIAL	-	CU	55.717 WWL AIKINS ST	-	-
263 SOUTHALL DR	-	20	4.31 EWL HSE	-	RECONNECT SERVICE
RESIDENTIAL	-	CU	60.836 WWL AIKINS ST	-	-
266 SOUTHALL DR	-	20	3.46 EWL HSE	-	RECONNECT SERVICE
RESIDENTIAL	-	CU	71.871 WWL AIKINS ST	-	-
267 SOUTHALL DR	-	20	4.31 EWL HSE	-	RECONNECT SERVICE
RESIDENTIAL	-	CU	77.109 WWL AIKINS ST	-	-
270 SOUTHALL DR	-	20	3.92 EWL HSE	-	RECONNECT SERVICE
RESIDENTIAL	-	CU	86.197 WWL AIKINS ST	-	-
271 SOUTHALL DR	-	20	4.70 EWL HSE	-	RECONNECT SERVICE
RESIDENTIAL	-	CU	92.350 WWL AIKINS ST	-	-
274 SOUTHALL DR	-	20	4.93 EWL HSE	-	RECONNECT SERVICE
RESIDENTIAL	-	CU	101.340 WWL AIKINS ST	-	-
275 SOUTHALL DR	-	20	4.77 EWL HSE	-	RECONNECT SERVICE
RESIDENTIAL	-	CU	108.809 WWL AIKINS ST	-	-
278 SOUTHALL DR	-	20	4.21 EWL HSE	-	RECONNECT SERVICE
RESIDENTIAL	-	CU	117.134 WWL AIKINS ST	-	-
279 SOUTHALL DR	-	20	4.01 EWL HSE	-	RECONNECT SERVICE
RESIDENTIAL	-	CU	124.963 WWL AIKINS ST	-	-

* SERVICES TO BE RENEWED TO R. ALL OTHERS TO BE RECONNECTED

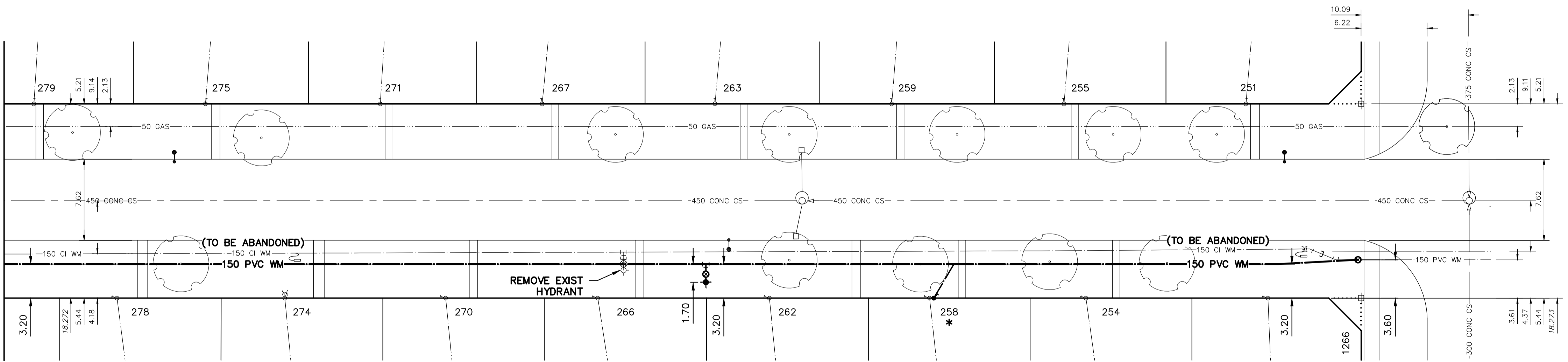
NOTE: CHAINAGES SHOWN ARE ALONG N R OF SOUTHALL DRIVE

SOUTHALL DRIVE



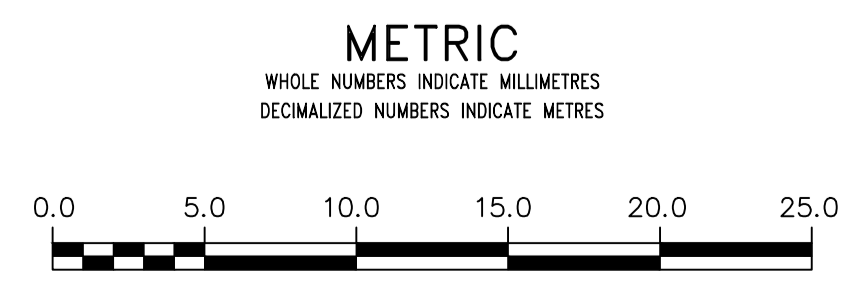
MATCHLINE 3+55.00
SEE DWG D-17144

AIKINS STREET



FOR INDEX SEE 17135

NOTE: ALL VALVES TO BE INSTALLED CLOCKWISE TO CLOSE



WARNING
IF POWER EQUIPMENT OR EXPLOSIVES ARE TO BE USED FOR EXCAVATION ON THIS PROJECT THE CONTRACTOR MUST:
1) NOTIFY THE GAS COMPANY OF THE PROPOSED LOCATION OF EXCAVATION.
2) TAKE PRECAUTION TO AVOID DAMAGE TO GAS COMPANY INSTALLATIONS.
SEE PROVINCIAL REGULATION 210/72 FOR DETAILS

LOCATION APPROVED UNDERGROUND STRUCTURES
SUPV. U/G STRUCTURES COMMITTEE DATE
NOTE:
LOCATION OF UNDERGROUND STRUCTURES AS SHOWN ARE BASED ON THE BEST INFORMATION AVAILABLE BUT NO GUARANTEE IS GIVEN THAT ALL EXISTING UTILITIES ARE SHOWN OR THAT THE GIVEN LOCATIONS ARE EXACT. CONFIRMATION OF EXISTENCE AND EXACT LOCATION OF ALL SERVICES MUST BE OBTAINED FROM THE INDIVIDUAL UTILITIES BEFORE PROCEEDING WITH CONSTRUCTION.

VERTICAL DATUM: CGVD28 (HT2.0 Geoid)			
HORIZONTAL DATUM: NAD83 (June 1990), Zone 14			
NO.	ISSUED FOR TENDER	2024/12/05	SC
NO.	REVISIONS	DATE	BY

DESIGNED BY	RG	CHECKED BY	SC
DRAWN BY	AOM	APPROVED BY	SC
SCALE:		RELEASED FOR CONSTRUCTION	
HORIZONTAL	1:250		
VERTICAL	1:50		
DATE	2024 12 05	DATE	

CONSULTANT DRAWING NUMBER

Digitally signed by Stacy Cournoyer, P. Eng

THE CITY OF WINNIPEG
WATER AND WASTE DEPARTMENT
ENGINEERING DIVISION

2024 WATER MAIN RENEWALS
CONTRACT 11
SOUTHALL DRIVE
255 E OF SALTER STREET TO
AIKINS STREET

SHEET 12 OF 13
CITY DRAWING NUMBER
D-17145