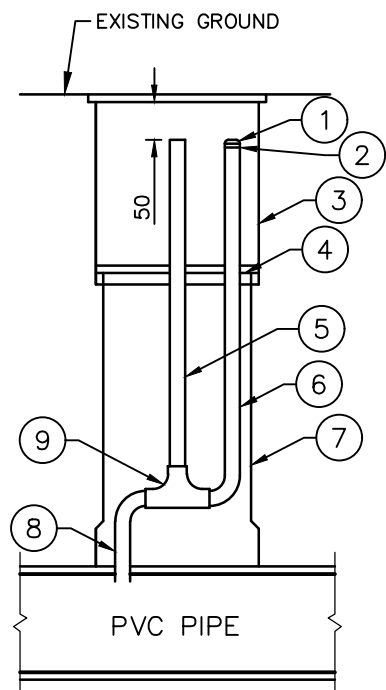


SEWER JUNCTION INFORMATION FROM SEWER VIDEO INSPECTION		
SEWER ID S-MA00016990		
DISTANCE FROM S-MH00000958		
DISTANCE	DIAMETER	CLOCK
11.5	250	10:00
15.8	250	10:00
23.8	250	10:00
41.8	150	11:00
47.0	250	1:00
69.3	150	11:00



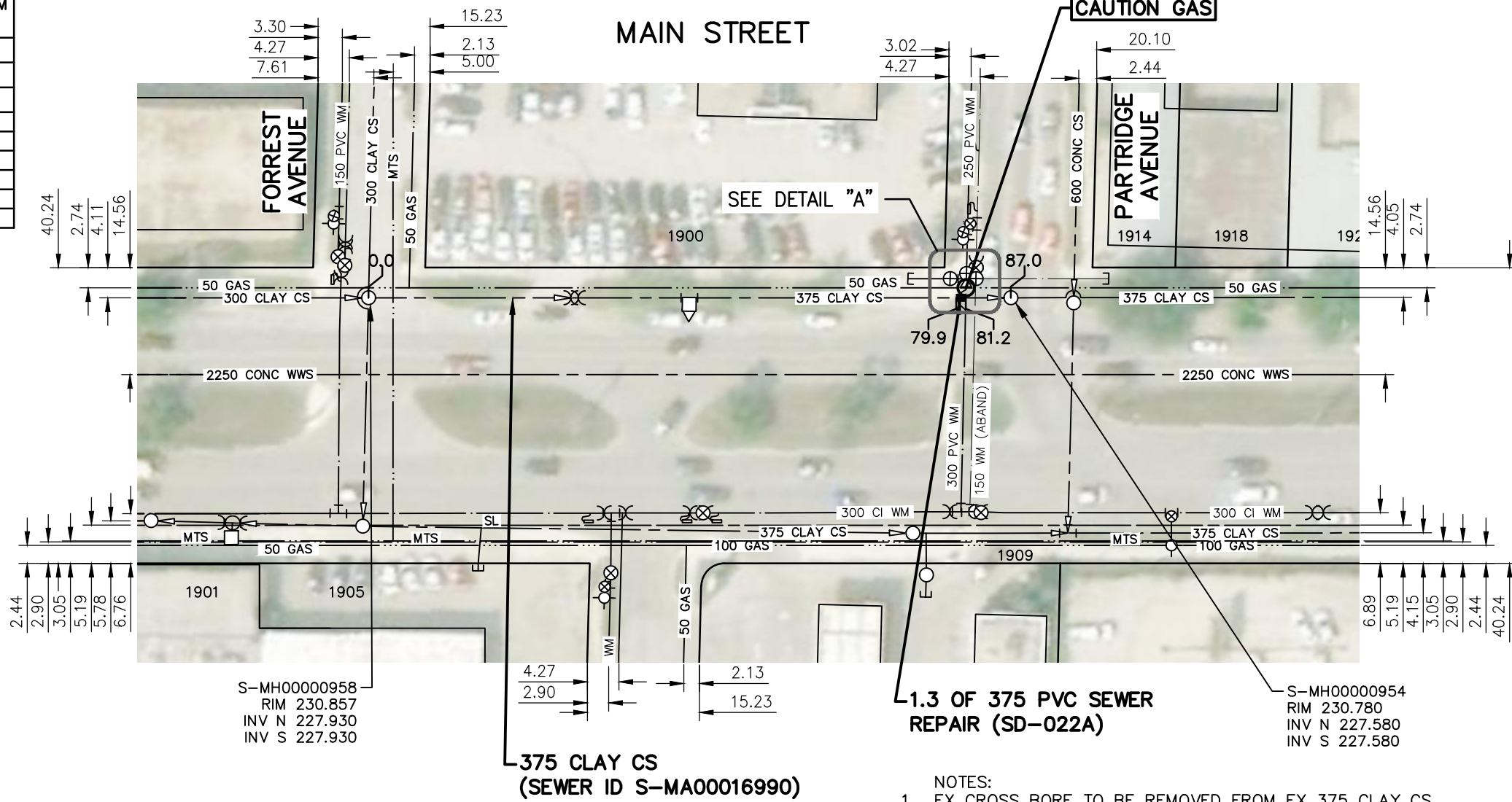
**AIR RELEASE VALVE DETAIL**

SCALE : NTS

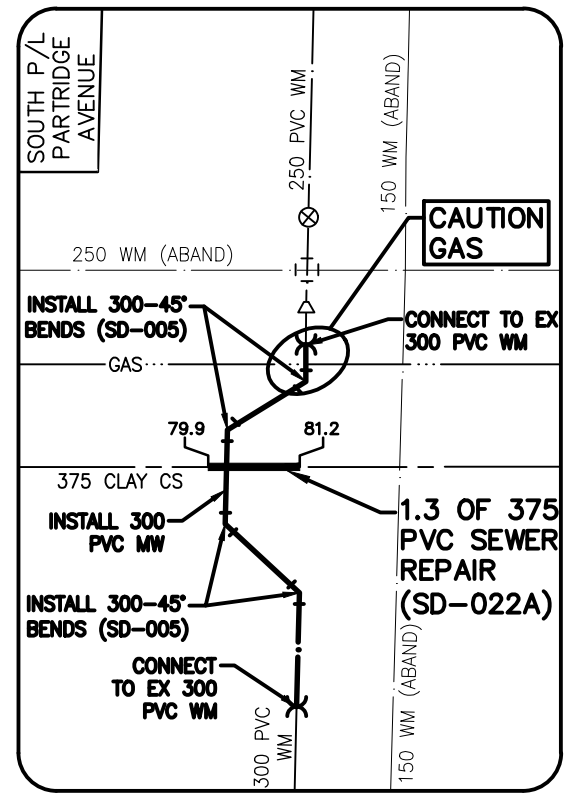
**WARNING**

IF POWER EQUIPMENT OR EXPLOSIVES ARE TO BE USED FOR EXCAVATION ON THIS PROJECT THE CONTRACTOR MUST:  
 1) NOTIFY THE GAS COMPANY OF THE PROPOSED LOCATION OF EXCAVATION.  
 2) TAKE PRECAUTION TO AVOID DAMAGE TO GAS COMPANY INSTALLATIONS.  
 SEE PROVINCIAL REGULATION 140/92 FOR DETAILS

- ① 20 CAST BRASS PLUG (FINGER TIGHT).
- ② 20 COPPER COUPLING (SOLDER TO F.I.P. THREAD).
- ③ STANDARD CITY OF WINNIPEG ADJUSTABLE VALVE BOX AND SOLID COVER.
- ④ SUPPORT WASHER.
- ⑤ 25 TYPE 316 STAINLESS STEEL VALVE OPERATING STEM.
- ⑥ 20 COPPER PIPE (FIELD MEASURED).
- ⑦ PVC BOX LOWER.
- ⑧ 20 CORPORATION COCK F.I.P. OUTLET THREAD, AWWA INLET THREAD.
- ⑨ 20 CURB STOP & DRAIN (F.I.P. OUTLETS).



**1.3 OF 375 PVC SEWER REPAIR (SD-022A)**



**DETAIL "A"**  
SCALE : NTS

**NOTES:**

1. EX CROSS BORE TO BE REMOVED FROM EX 375 CLAY CS.
2. PROVIDE 0.45 SEPARATION FROM NEW WM TO EX CS.
3. PROVIDE INSULATION AS PER SD-018 WHERE NEW WM HAS LESS THAN 2.4m COVER.
4. WATER MAIN OFFSET SHOWN ONLY TO BETTER SHOW PROPOSED VERTICAL BENDS. NEW WATER MAIN ALIGNMENT TO MATCH EXISTING.
5. VERTICAL BENDS TO GO OVER OR UNDER EXISTING COMBINED SEWER, AND TO BE CONFIRMED IN THE FIELD. IF PROPOSED RENEWAL TO GO OVER EXISTING COMBINED SEWER, AIR RELEASE VALVE TO BE PROVIDED AS PER DETAIL "B".

**ENGINEERS GEOSCIENTISTS MANITOBA**  
 Certificate of Authorization  
 Stantec Consulting Ltd.  
 No. 1301

FOR INDEX SEE 13567

TENDER NO. 832-2024

**METRIC**

WHOLE NUMBERS INDICATE MILLIMETRES  
 DECIMALIZED NUMBERS INDICATE METRES



**LOCATION APPROVED UNDERGROUND STRUCTURES**

SUPV. U/G STRUCTURES DATE COMMITTEE

**NOTE:**  
 LOCATION OF UNDERGROUND STRUCTURES AS SHOWN ARE BASED ON THE BEST INFORMATION AVAILABLE BUT NO GUARANTEE IS GIVEN THAT ALL EXISTING UTILITIES ARE SHOWN OR THAT THE GIVEN LOCATIONS ARE EXACT. CONFIRMATION OF EXISTENCE AND EXACT LOCATION OF ALL SERVICES MUST BE OBTAINED FROM THE INDIVIDUAL UTILITIES BEFORE PROCEEDING WITH CONSTRUCTION.

B.M. ELEV.	NO.	REVISIONS	DATE	BY
	00	ISSUED FOR TENDER	24.10.01	RS

**Stantec**  
 311 Portage Avenue, Winnipeg, Manitoba  
 Tel 204-489-5900 Fax 204-453-9012

DESIGNED BY	RS	CHECKED BY	RS
DRAWN BY	MR	APPROVED BY	RS
HOR. SCALE:	1:750	RELEASED FOR CONSTRUCTION:	AD
VERTICAL:		DATE	24.10.01

ENGINEER'S SEAL  
  
 CONSULTANT DRAWING NO.  
**C-III**

**THE CITY OF WINNIPEG**  
**WATER AND WASTE DEPARTMENT**

**2024 SEWER MAIN RENEWALS AND EXTERNAL POINT REPAIRS**  
 CONTRACT 1  
**MAIN STREET**  
 MH AT FORREST AVENUE TO  
 MH AT PARTRIDGE AVENUE

SHEET	OF
<b>13</b>	<b>28</b>
CAD FILE DRAWING NUMBER <b>20895c-108_113.dwg</b>	
CITY DRAWING NUMBER <b>13579</b>	

U:\11220895\0300\_drawing\0302\_sheet\_files\iso\_11x17\20895c-108\_113.dwg