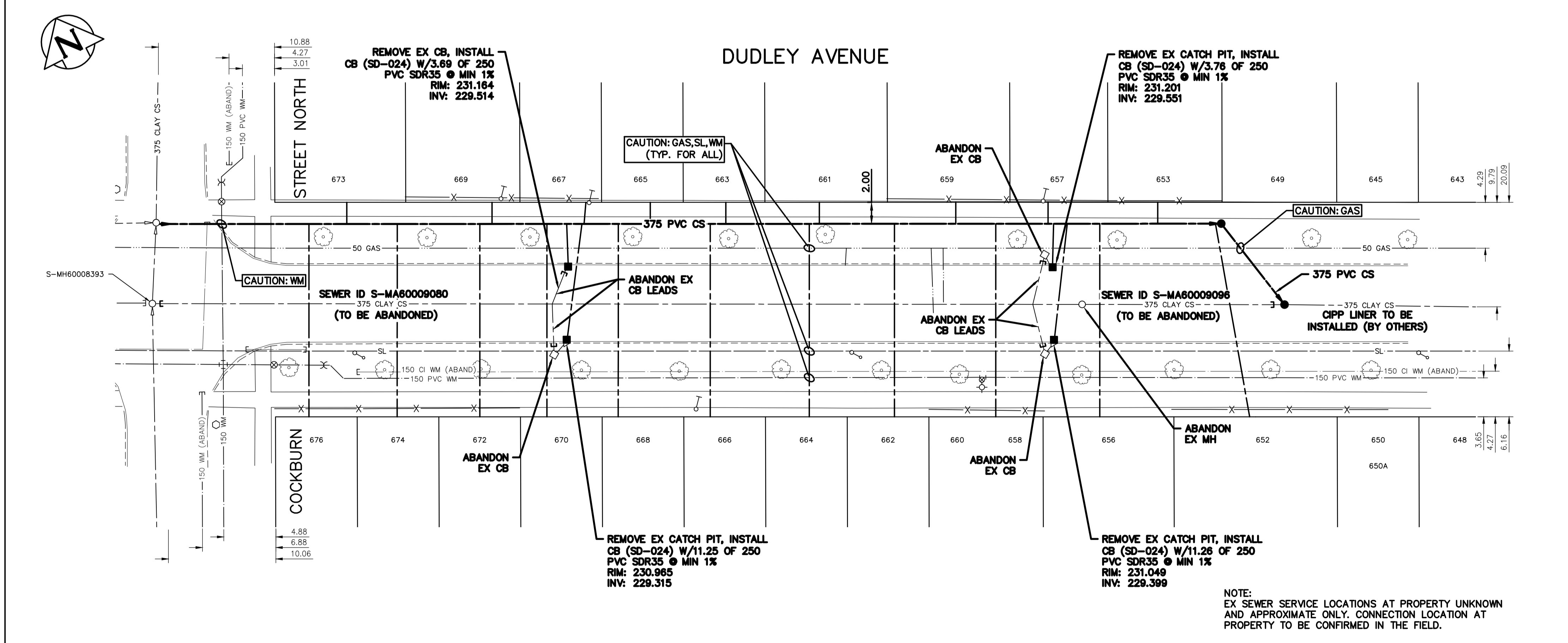


**SEWER SERVICE INFORMATION**

ADDRESS	SIZE (mm)	P/L DIST	REMARKS
652 DUDLEY	-	-	-
653 DUDLEY	-	-	-
656 DUDLEY	-	-	-
657 DUDLEY	-	-	-
658/660 DUDLEY	-	-	-
659 DUDLEY	-	-	-
661 DUDLEY	-	-	-
662 DUDLEY	-	-	-
663 DUDLEY	-	-	-
664 DUDLEY	-	-	-
665 DUDLEY	-	-	-
666 DUDLEY	-	-	-
667 DUDLEY	-	-	-
668 DUDLEY	-	-	-
669 DUDLEY	-	-	-
670 DUDLEY	-	-	-
672 DUDLEY	-	-	-
673 DUDLEY	-	-	-
674 DUDLEY	-	-	-
676 DUDLEY	-	-	-



**SEWER JUNCTION INFORMATION FROM SEWER VIDEO INSPECTION**

DISTANCE FROM S-MH60008393	DIAMETER	CLOCK
17.90	150	2:00
18.60	150	11:00
25.20	150	2:00
25.90	150	11:00
26.40	150	11:00
33.20	150	1:00
33.60	150	11:00
37.20	250	12:00
38.40	250	12:00
40.30	150	1:00
40.90	150	11:00
48.20	150	1:00
48.90	150	11:00
52.00	150	2:00
52.50	150	11:00
55.60	150	2:00
56.10	150	11:00
63.70	150	1:00
64.20	150	11:00
71.00	150	1:00
71.50	150	11:00
78.30	150	1:00
78.80	150	11:00
83.40	250	12:00
84.00	250	12:00
84.70	150	1:00
85.50	150	11:00

NOTE: CHAINAGES SHOWN ARE ALONG CENTRE LINE OF ROW

FOR INDEX SEE 13567



**METRIC**  
WHOLE NUMBERS INDICATE MILLIMETRES  
DECIMALIZED NUMBERS INDICATE METRES

**ENGINEERS GEOSCIENTISTS MANITOBA**  
Certificate of Authorization  
Stantec Consulting Ltd.  
No. 1301

LOCATION APPROVED UNDERGROUND STRUCTURES		B.M. ELEV.
SUPV. U/G STRUCTURES COMMITTEE	DATE	
NOTE: LOCATION OF UNDERGROUND STRUCTURES AS SHOWN ARE BASED ON THE BEST INFORMATION AVAILABLE BUT NO GUARANTEE IS GIVEN THAT ALL EXISTING UTILITIES ARE SHOWN OR THAT THE GIVEN LOCATIONS ARE EXACT. CONFIRMATION OF EXISTENCE AND EXACT LOCATION OF ALL SERVICES MUST BE OBTAINED FROM THE INDIVIDUAL UTILITIES BEFORE PROCEEDING WITH CONSTRUCTION.		
00	ISSUED FOR TENDER	2024.10.04 RS
NO.	REVISIONS	DATE BY

**Stantec**

DESIGNED BY	RS	CHECKED BY	RS
DRAWN BY	MR	APPROVED BY	RS
SCALE:		RELEASED FOR CONSTRUCTION	AD
HORIZONTAL	1:250		
VERTICAL	1:50		
DATE	2024.07.29	DATE	2024.10.01

ENGINEER'S SEAL  
CONSULTANT DRAWING NUMBER  
C-201

**THE CITY OF WINNIPEG**  
WATER AND WASTE DEPARTMENT  
ENGINEERING DIVISION

2024 SEWER MAIN RENEWALS AND EXTERNAL POINT REPAIRS

**CONTRACT 1**  
**DUDLEY AVENUE**  
COCKBURN STREET NORTH TO  
59.0 E OF HUGO STREET NORTH

SHEET 23 OF 28  
CITY DRAWING NUMBER  
13589