

Copyright Reserved

The Contractor shall verify and be responsible for all dimensions. DO NOT scale the drawing - any errors or omissions shall be reported to Stantec without delay. The Copyrights to all designs and drawings are the property of Stantec. Reproduction or use for any purpose other than that authorized by Stantec is forbidden.

Consultants

Legend

Notes

4			
3			
2			
1			
0	ISSUED FOR CONSTRUCTION	BH	BH 24.12.24
Revision		By	Appd. YF/AM/DD
E			
D			
C			
B			
A			
Issued		By	Appd. YF/AM/DD
File Name:	22050_mech_plumbing_ph3_20241122		24.11.23
		Dwn.	Chkd. Dign. YF/AM/DD

Permit-Seal

**ENGINEERS
 GEOSCIENTISTS
 MANITOBA**
 Certificate of Authorization
 Stantec Consulting Ltd.
 No. 1301



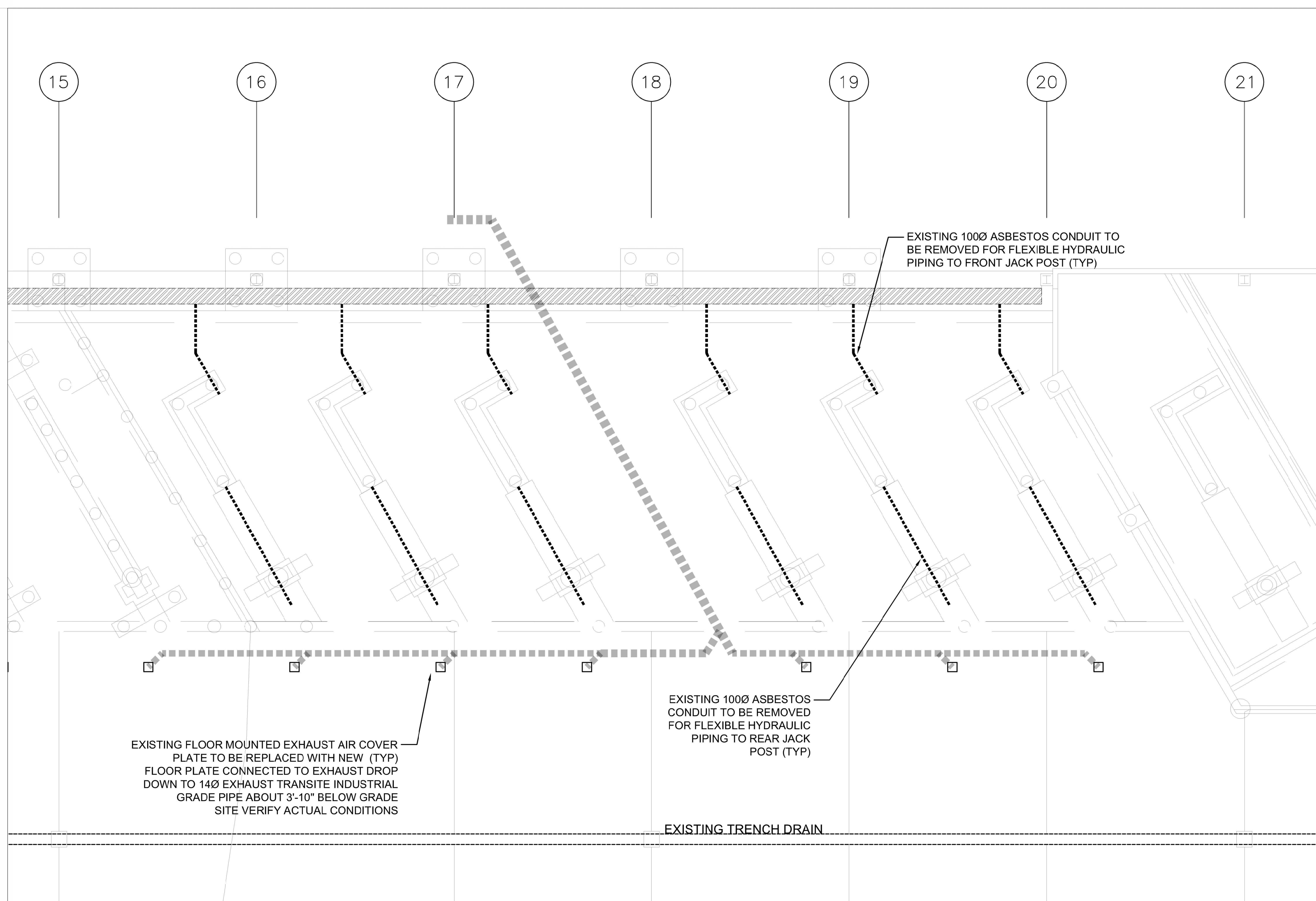
Client/Project

WINNIPEG TRANSIT
 GARAGE BUILDING
 HOIST REPLACEMENT PROGRAM
 PHASE 3 - HOISTS 2 - 7
 421 Osborne Street, Winnipeg Manitoba

Title

MAIN FLOOR SANITARY DRAINAGE
 AND VENTILATION DEMOLITION PLAN

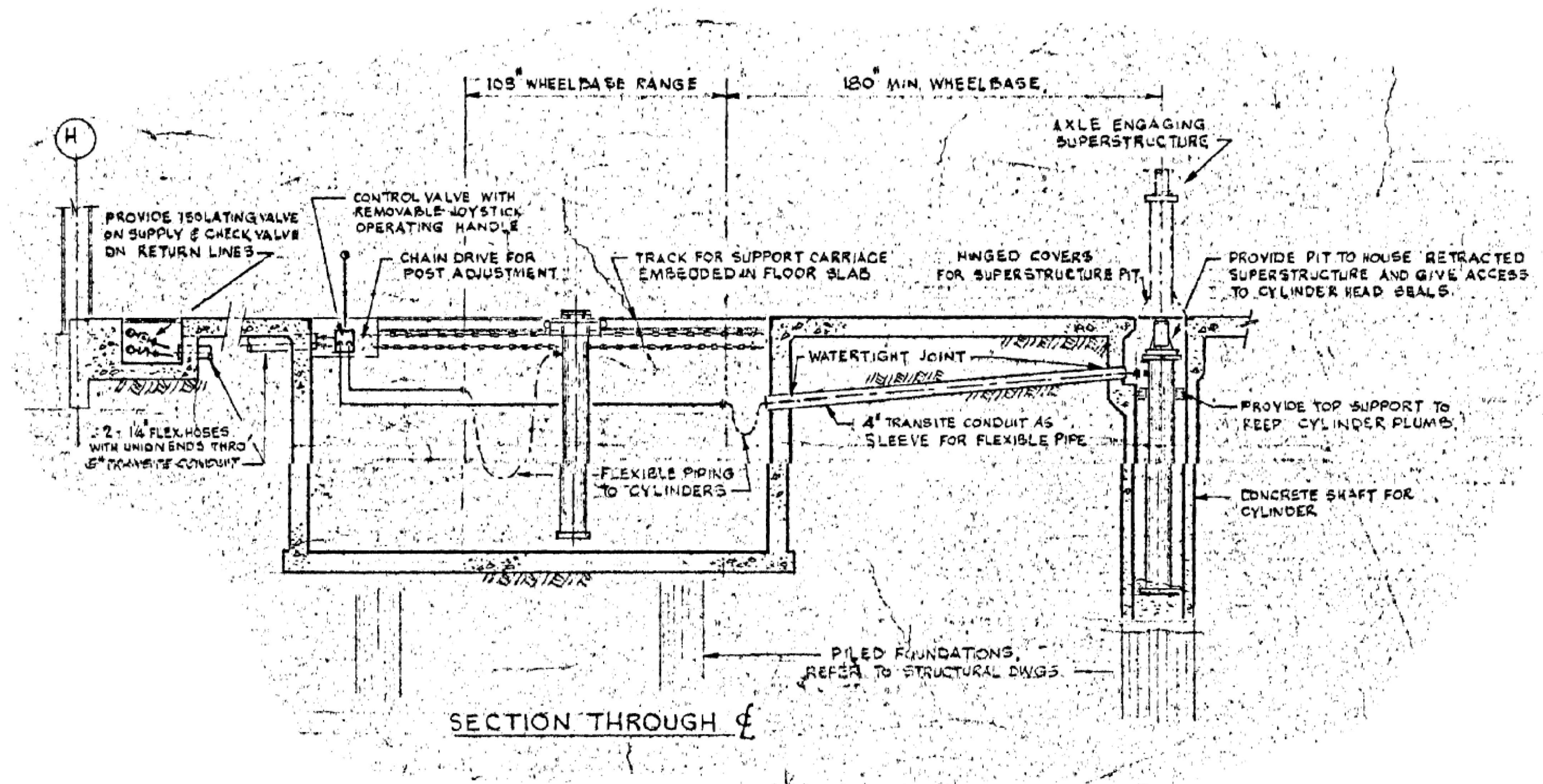
Project No.	Scale
115422050	1:100
Drawing No.	Sheet
	Revision



1 MAIN FLOOR PLUMBING DEMOLITION PLAN
 M-101 1:100

GENERAL NOTES

1. TRANSITE CONDUIT CONNECTING THE FRONT AND REAR OF THE EXISTING JACK TO THE SERVICE TRENCH HAS BEEN ASSESSED FOR ASBESTOS.
2. ALL CEMENTITIOUS DRAIN PIPES ARE TO BE CONSIDERED CONTAINING ASBESTOS.
3. REMOVAL OF PIPES INVOLVING JACK-HAMMERING OR CUTTING WILL NEED TO OCCUR IN A TYPE 2 ENCLOSURE TO CONTAIN THE SILICA DUST AND ANY ASBESTOS FIBRES THAT MAY BE RELEASED. IF ASBESTOS PIPING CAN BE REMOVED WITHOUT BEING DAMAGED, THEN ONLY A TYPE 1 ENCLOSURE WILL BE REQUIRED. (SEE APPENDIX). AS REFERENCE FROM PREVIOUS REPLACEMENT, FRONT TRANSITE CONDUIT WERE REMOVED IN TYPE 2 CONDITIONS WHILE REAR CONDUITS WERE REMOVED IN TYPE 1 CONDITIONS.
4. LOCATION OF EXISTING PIPES ARE ESTIMATIONS BASED ON OLD DRAWINGS. EXACT LOCATIONS ARE NOT AVAILABLE.
5. REMOVE EXISTING COMPRESSED AIR LINE FROM EACH LIFT PIT BACK TO MAIN COMPRESSED AIR BRANCH.
6. DRAIN HYDRAULIC LINES BACK TO SERVICE TRENCH. REMOVE EACH HYDRAULIC LINE FROM SERVICE TRENCH TO EACH CYLINDER IN ENTIRETY.



2 EXISTING TWO-POST BUS HOIST SECTION VIEW
 M-101 NTS