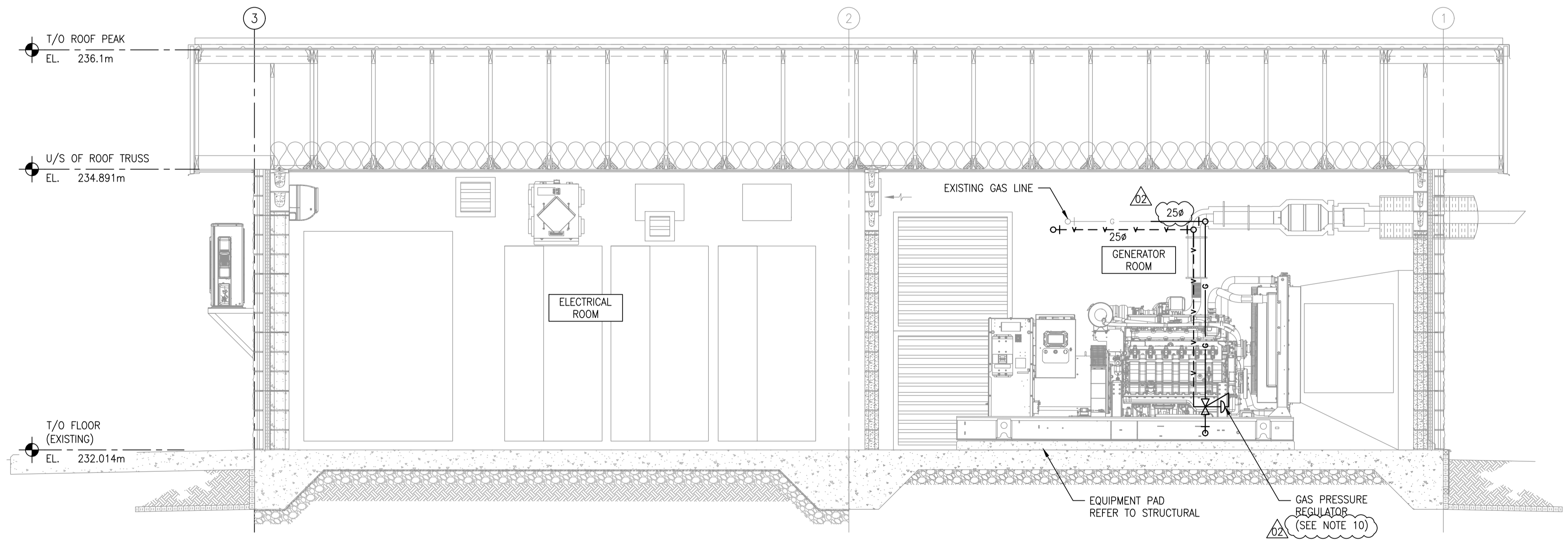
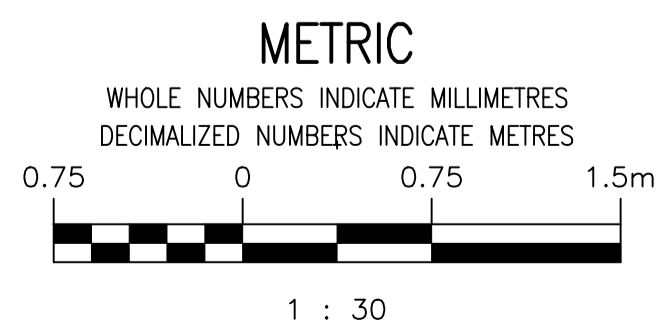


FLOOR PLAN
SCALE: 1:30



SECTION
SCALE: 1:30



**ENGINEERS
GEOSCIENTISTS
MANITOBA**

Certificate of Authorization
MPE, a division of Englobe Corp.
No. 4968 Date: DEC 17, 2024

NO.	REVISIONS	DATE	DESIGN	CHECK
02	REISSUED FOR CONSTRUCTION, B.O. 936-2024	2024-12-17	PPG	PPG
01	ISSUED FOR CONSTRUCTION, B.O. 936-2024	2024-11-13	PPG	PPG

MPE a division of Englobe	
DESIGNED BY: B. DRADER	CHECKED BY: P. GOERTZEN
DRAWN BY: J. BALVERDE	APPROVED BY: P. GOERTZEN
SCALE: 1:30	RELEASED FOR CONSTRUCTION BY: P. GOERTZEN
DATE: 2024-11-13	DATE:
CONSULTANT NO.:	8400-009-00

ENGINEER'S SEAL

2024-12-17

REV 02

THE CITY OF WINNIPEG
WATER AND WASTE DEPARTMENT

WINDSOR PARK STANDBY GENERATOR BUILDING
2025 UPGRADES
MECHANICAL PIPING PLAN AND SECTION
GENERATOR BUILDING
NEW WORK

CITY DRAWING NUMBER
1-0219L-M0001

SHEET REV. SIZE
001 02 A1

NOTES:

- CONTRACTOR TO FIELD CONFIRM ALL DIMENSIONS. NOTE ANY DISCREPANCIES WITH ENGINEER PRIOR TO FABRICATION OR CONSTRUCTION.
- DRAWINGS ARE DIAGRAMMATIC AND INDICATE INTENT ONLY. PROVIDE ALL VERTICAL AND HORIZONTAL OFFSETS NOT NECESSARILY IDENTIFIED IN THE DRAWINGS IN A MANNER THAT MEETS ALL CODE REQUIREMENTS.
- CONTRACTOR TO PROVIDE SUPPORT FOR PIPING AND FITTING AS PER'S MANUFACTURER RECOMMENDATION.
- ALL PENETRATIONS TO BE PROPERLY SEALED.
- DIAGRAMMATIC PIPING IS TO BE MOUNTED ON RACKS AND WALLS TO CARRY OUT WORK IN NEATEST POSSIBLE MANNER. CONTRACTOR TO CONFIRM ROUTING WITH ENGINEER PRIOR TO INSTALLATION.
- DRAINAGE LINES SHALL BE INSTALLED C/W SLOPES, VENTS, ETC. TO MEET ALL CODE REQUIREMENTS.
- MECHANICAL EQUIPMENT PROVIDED AND INSTALLED BY MECHANICAL CONTRACTOR TO PROVIDE AND INSTALL WIRING.
- EACH GAS CONNECTION TO AN APPLIANCE SHALL BE MADE WITH A UNION, ISOLATION GAS COCK AND DIRT LEG. GAS LINE TO BE SIZED TO CAN/CSA B149.1-20. INCLUDE GASTITE FLEX CONNECTION FOR RANGES. HARD PIPE ALL OTHER MECHANICAL EQUIPMENT.
- COORDINATE ADDITIONAL GAS LOAD WITH UTILITY.
- THE SPECIFIED GENERAC GENERATOR USED AS THE DESIGN BASIS IS RATED FOR 3,420 MBH AT A OPERATING PRESSURE OF 7-11 IN. W.C., HOWEVER, IT IS THE CONTRACTOR'S RESPONSIBILITY TO ENSURE THAT THE PRESSURE REGULATOR IS SUITABLE FOR THE GENERATOR PROVIDED AS ALTERNATIVE GENERATORS MAY HAVE DIFFERENT INPUT RATINGS.