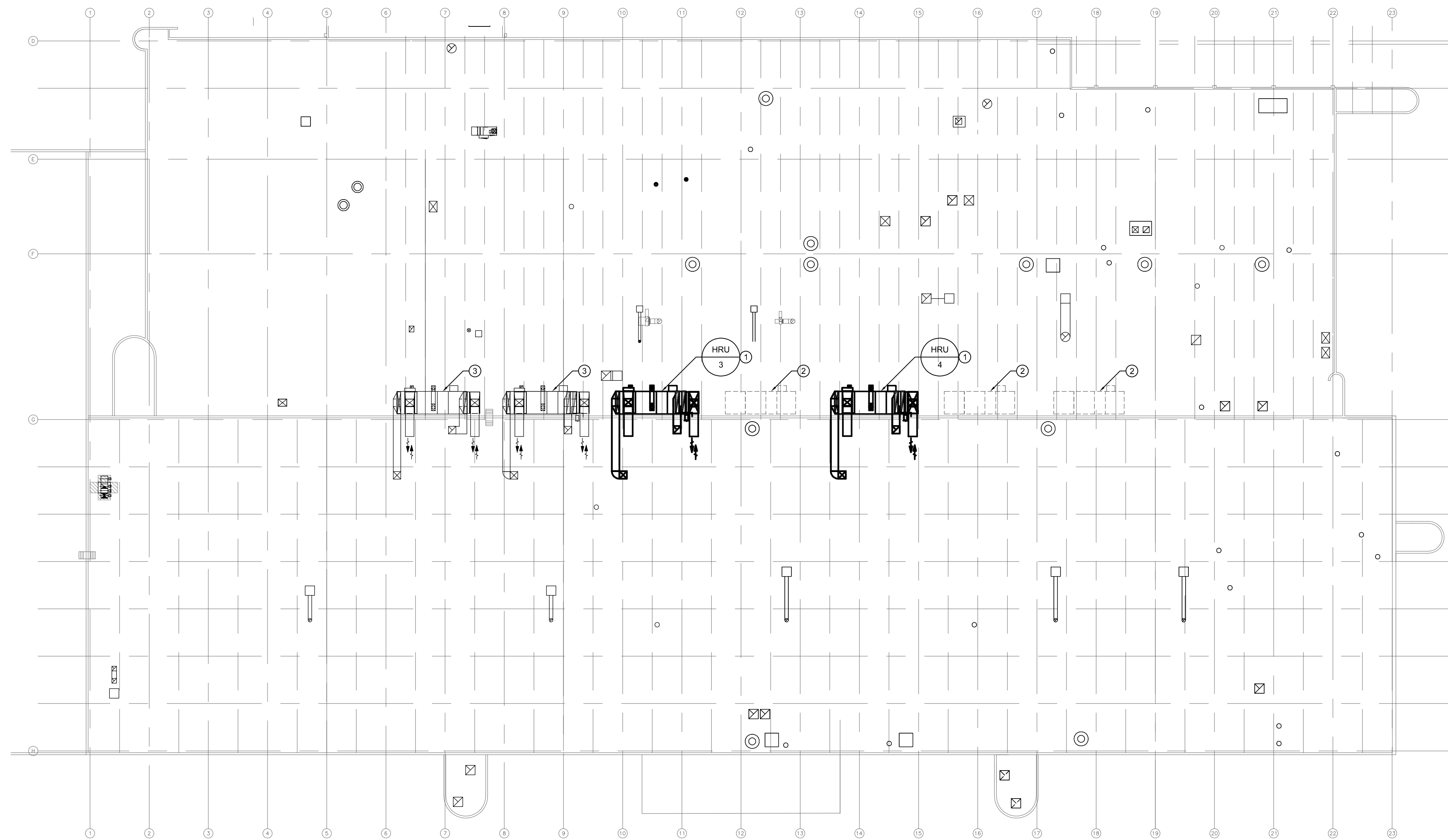
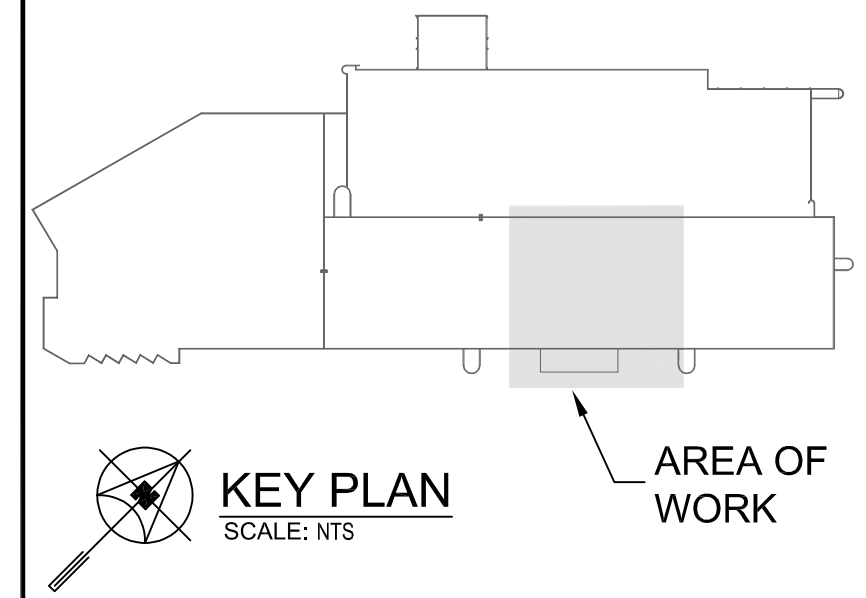


KEY NOTES

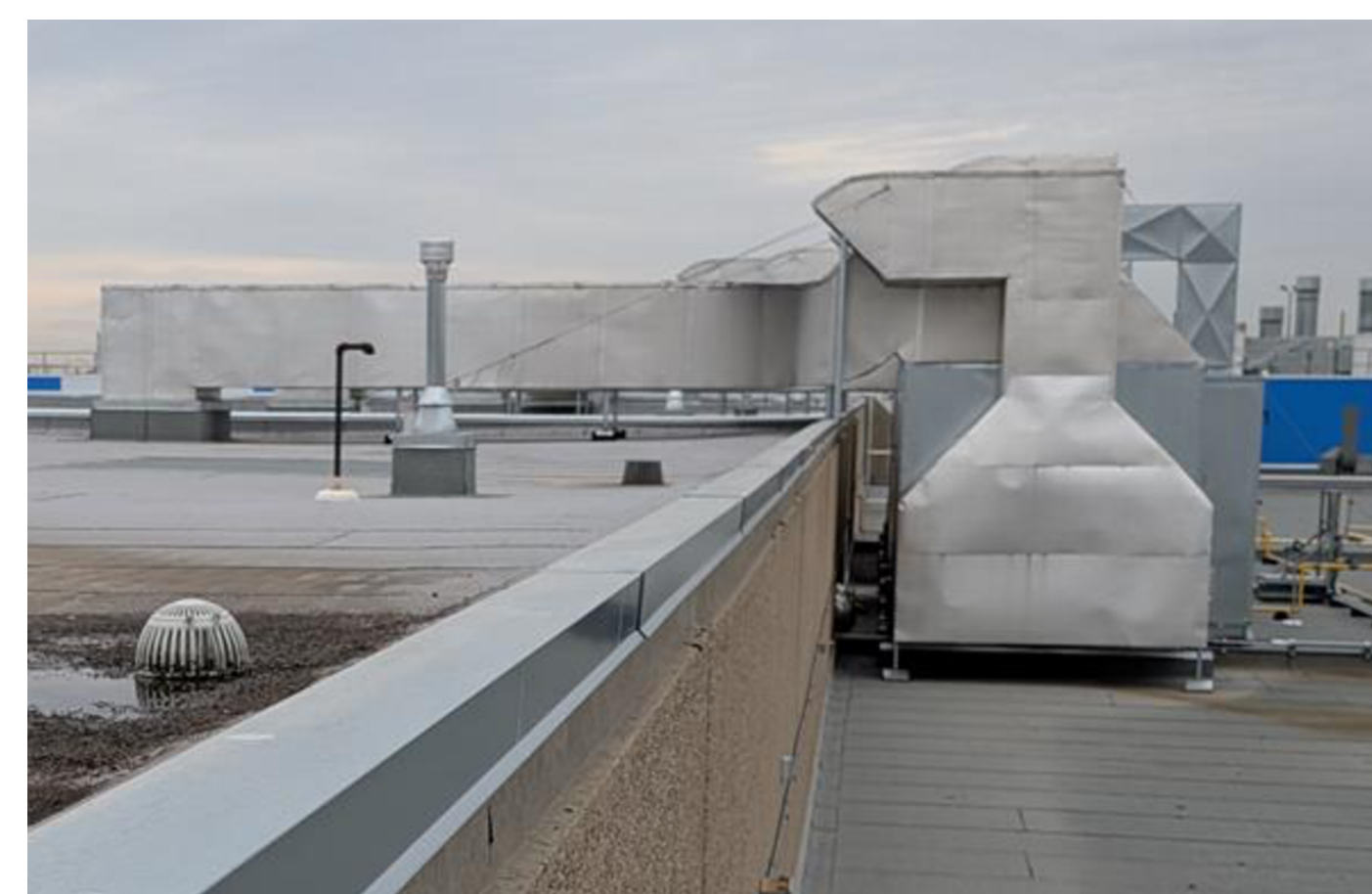
1. NEW HRUs TO BE SUPPLIED AND DELIVERED TO WINNIPEG FOR FUTURE CONSTRUCTION / INSTALLATION CONTRACT. LOCATIONS OF HRUs ON ROOF SHOWN FOR INFORMATION ONLY. NEW HRUs TO MATCH EXISTING HRUs AND HAVE THE SAME GENERAL DUCT WORK CONFIGURATION. REFER TO PHOTOS ON THIS SHEET.
2. LOCATION FOR FUTURE HRU ON ROOF. SHOWN FOR INFORMATION ONLY.
3. EXISTING HRU ON ROOF. SHOWN FOR INFORMATION ONLY.



1 ROOF PLAN - HVAC - NEW CONSTRUCTION
SCALE: 1/32"=1'-0"
M1.0

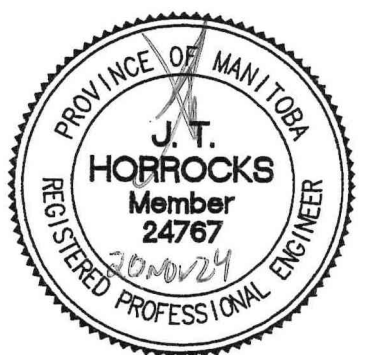


2 EXISTING HRU
SCALE: NTS
M1.0



4			
3			
2			
1			
0	ISSUED FOR CONSTRUCTION	JH	20/11/24
NO.	Description	BY	DDMMYY

**ENGINEERS
GEOSCIENTISTS
MANITOBA**
Certificate of Authorization
SMS Engineering Ltd.
No. 166



SMS Engineering
770 Bradford Street Winnipeg, Canada (204) 775-0291
24-256-01



Winnipeg Transit

Project Title
**TRANSIT MAINTENANCE AND
REPAIR BUILDING MECHANICAL
UPGRADE - CENTRE HIGH BAY**
WINNIPEG MANITOBA

Drawing Title
**ROOF PLAN - VENTILATION -
NEW CONSTRUCTION**

Drawn By AJ	Checked By JH	Approved By JH
Scale 1/32"=1'-0"	Date NOVEMBER 2024	Project No. 24-256-01
Revision Number 0	Drawing Number M1.0	Sheet Order 01 OF 01