

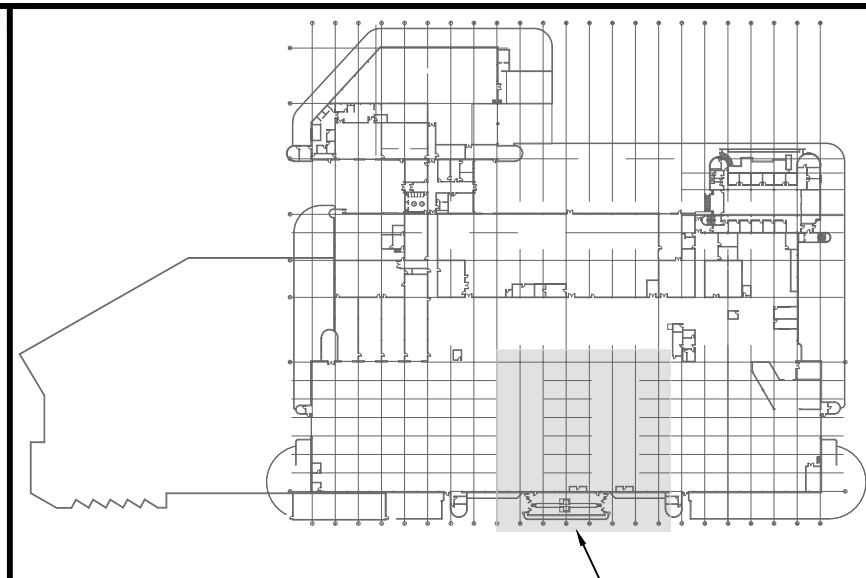
1 PARTIAL ROOF PLAN - PLUMBING - NEW CONSTRUCTION
 SCALE: 1/16"=1'-0"
 M2.2

GENERAL NOTES

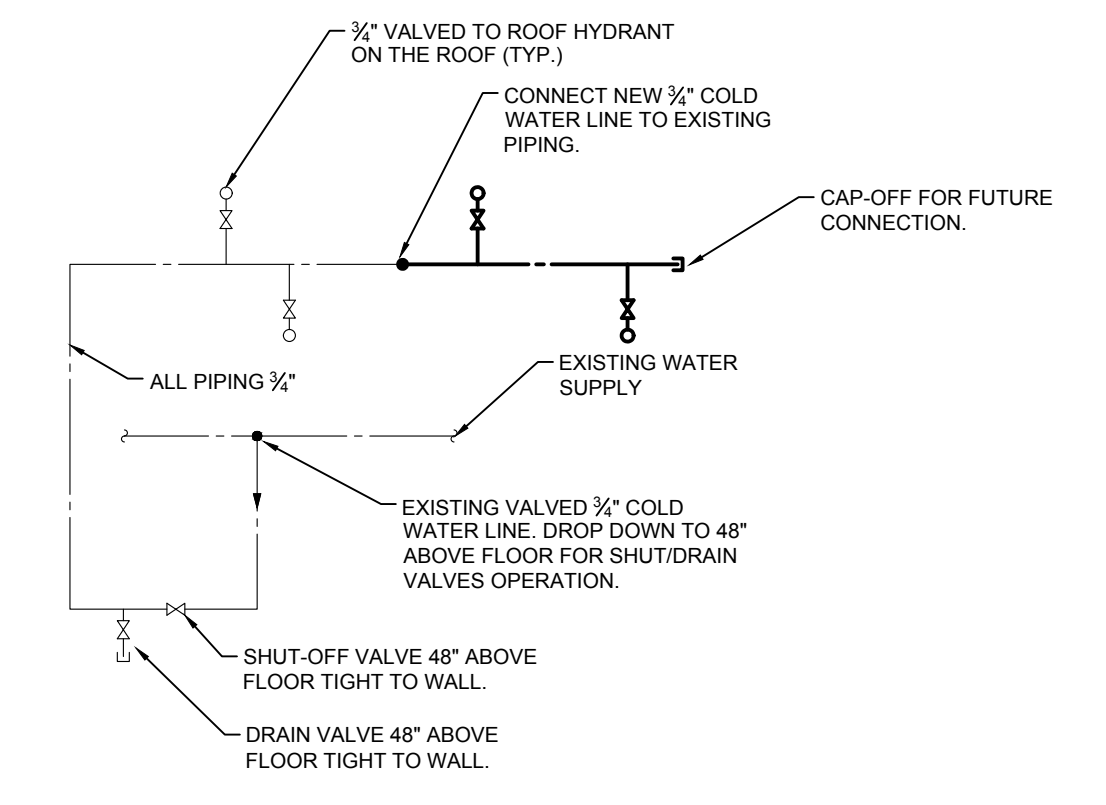
- A. ALL ABANDONED EQUIPMENT AND SERVICES WITHIN AREA OF WORK SHALL BE REMOVED.
- B. THIS BUILDING MAY CONTAIN ASBESTOS. REFER TO FRONT END SPECIFICATIONS FOR FURTHER INFORMATION.
- C. PRIOR TO DEMOLISHING AND REMOVAL OF THE EXISTING EQUIPMENT, COORDINATE WITH THE CITY. RETURN EQUIPMENT TO THE CITY AS REQUIRED.
- D. REFER TO ROOF DETAILS AND SPECIFICATIONS FOR ALL NEW AND CAPPED OPENINGS.
- E. FOR DRAWING CLARITY, NOT ALL MECHANICAL EQUIPMENT, PIPING AND DUCTWORK HAS BEEN SHOWN.

KEY NOTES

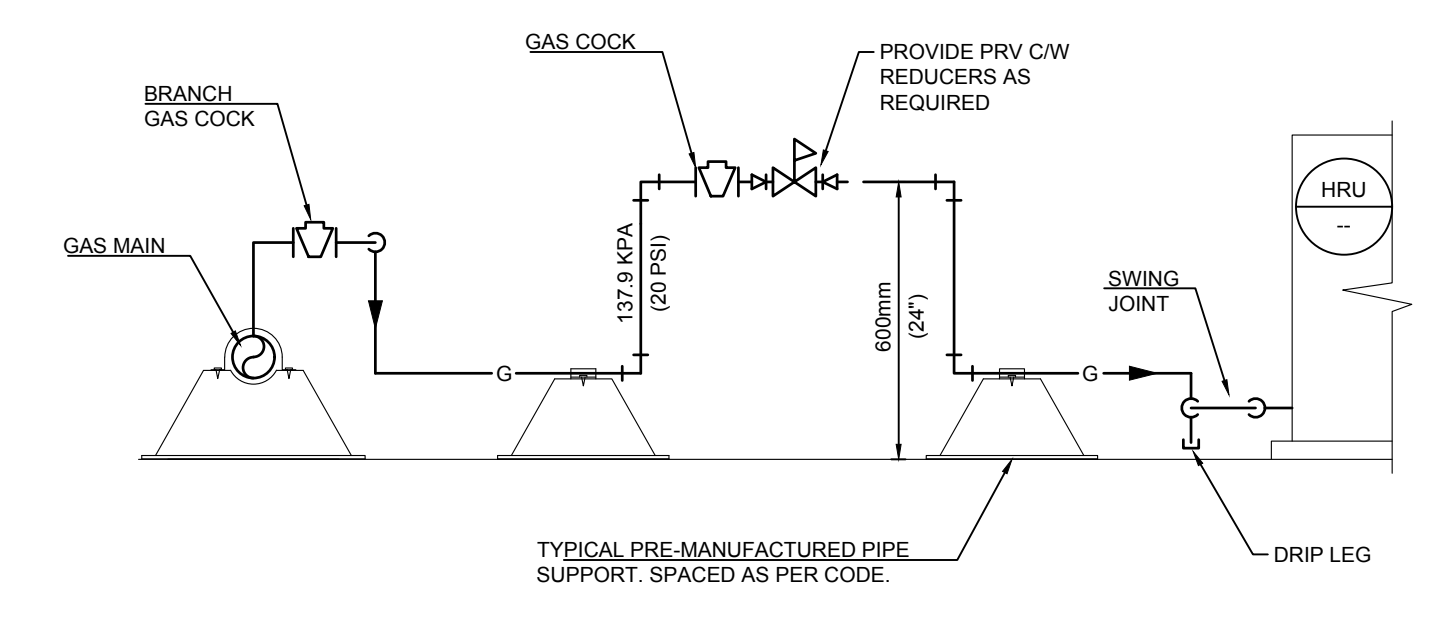
- 1. INSTALL NEW FLUE VENT IN ACCORDANCE WITH MANUFACTURER REQUIREMENTS. PROVIDE WEATHER TIGHT SEAL IN ACCORDANCE WITH ROOF DETAIL AND MATCH THE CONSTRUCTION AND FINISH FROM ADJACENT CONDITION. CONTRACTOR TO CONFIRM EXACT LOCATION ON SITE.
- 2. NEW COMBUSTION INTAKE THROUGH ROOF. PROVIDE WEATHER TIGHT SEAL IN ACCORDANCE WITH ROOF DETAIL AND MATCH THE CONSTRUCTION AND FINISH FROM ADJACENT CONDITION. CONTRACTOR TO CONFIRM EXACT LOCATION ON SITE.
- 3. NEW 20PSI NATURAL GAS PIPE FROM BELOW SERVING NEW HRU.
- 4. NEW NON FREEZE ROOF HYDRANT LOCATED BESIDE HRU. COORDINATE FINAL LOCATION ON SITE. REFER TO ROOF HYDRANT SCHEMATIC DETAIL ON THIS DRAWING.
- 5. PROVIDE CONDENSATE DRAIN TO DISCHARGE ONTO ROOF C/W HEAT TRACE (BY ELECTRICAL DIVISION) AND INSULATION.
- 6. NEW HRU. REFER TO DRAWING M4.2 FOR FURTHER INFORMATION.
- 7. NEW NATURAL GAS REGULATOR VENT THROUGH ROOF. PROVIDE WEATHER TIGHT SEAL. CONTRACTOR TO CONFIRM EXACT LOCATION ON SITE.



KEY PLAN
 SCALE: NTS



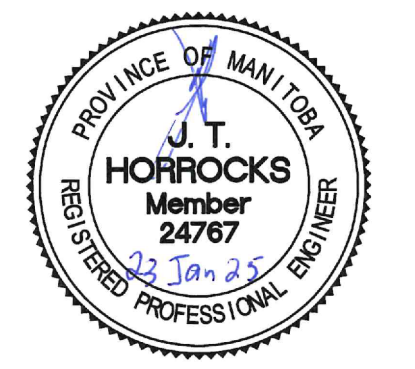
2 ROOF HYDRANT SCHEMATIC DETAIL
 SCALE: NTS



3 TYPICAL PRESSURE REDUCING VALVE DETAIL
 SCALE: NTS

6			
5			
4			
3			
2			
1			
0	ISSUED FOR CONSTRUCTION	JH	23/01/25
NO.	Description	BY	DDMMYY

**ENGINEERS
 GEOSCIENTISTS
 MANITOBA**
 Certificate of Authorization
SMS Engineering Ltd.
 No. 166



SMS Engineering
 770 Bradford Street Winnipeg, Canada (204) 775-0291
 24-256-01



Winnipeg Transit

Project Title
TRANSIT MAINTENANCE AND REPAIR BUILDING MECHANICAL UPGRADE - CENTRE HIGH BAY
 WINNIPEG MANITOBA

Drawing Title
PARTIAL ROOF PLAN - PLUMBING - NEW CONSTRUCTION

Drawn By	API/KS	Checked By	JH	Approved By	JH
Scale	AS INDICATED	Date	DECEMBER 2024	Project No.	24-256-01
Revision Number	0	Drawing Number	M2.2	Sheet Order	7 OF 10

FILE NAME AND PATH: C:\ProgramData\256 Transit Maintenance Building Phase 6 HVAC Upgrade\0 CAD - Revit\3.5 Mech\Phase 6\24-256-M2.2_PL_L1.rvt
 LAYOUT: M2.2
 LAST SAVED BY: akm
 DATE INDICATED: Thursday, April 29, 2021 10:02:02 AM