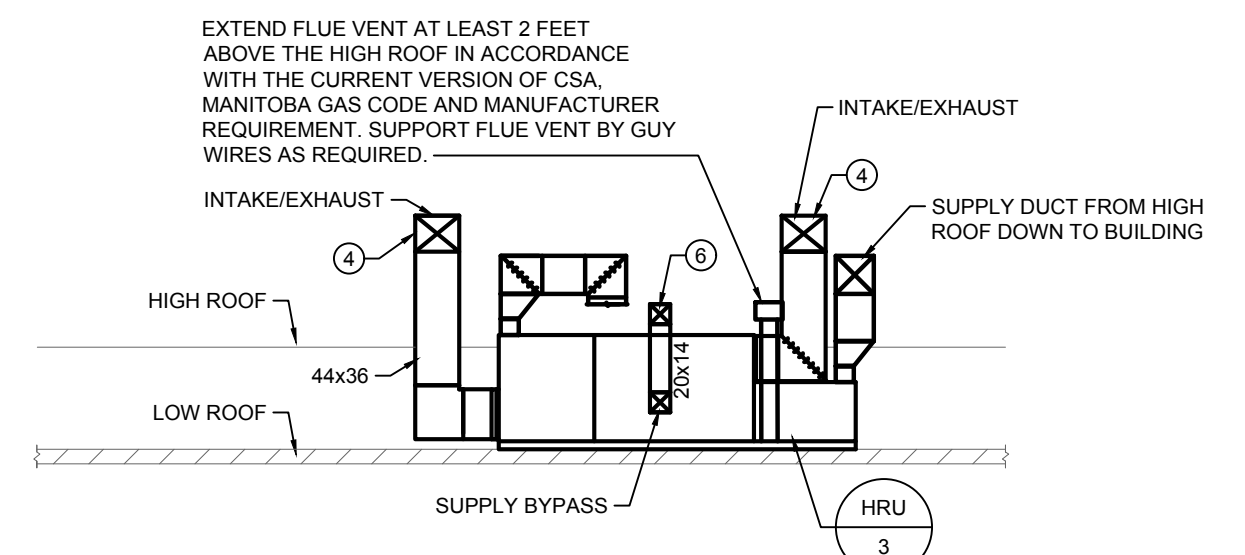
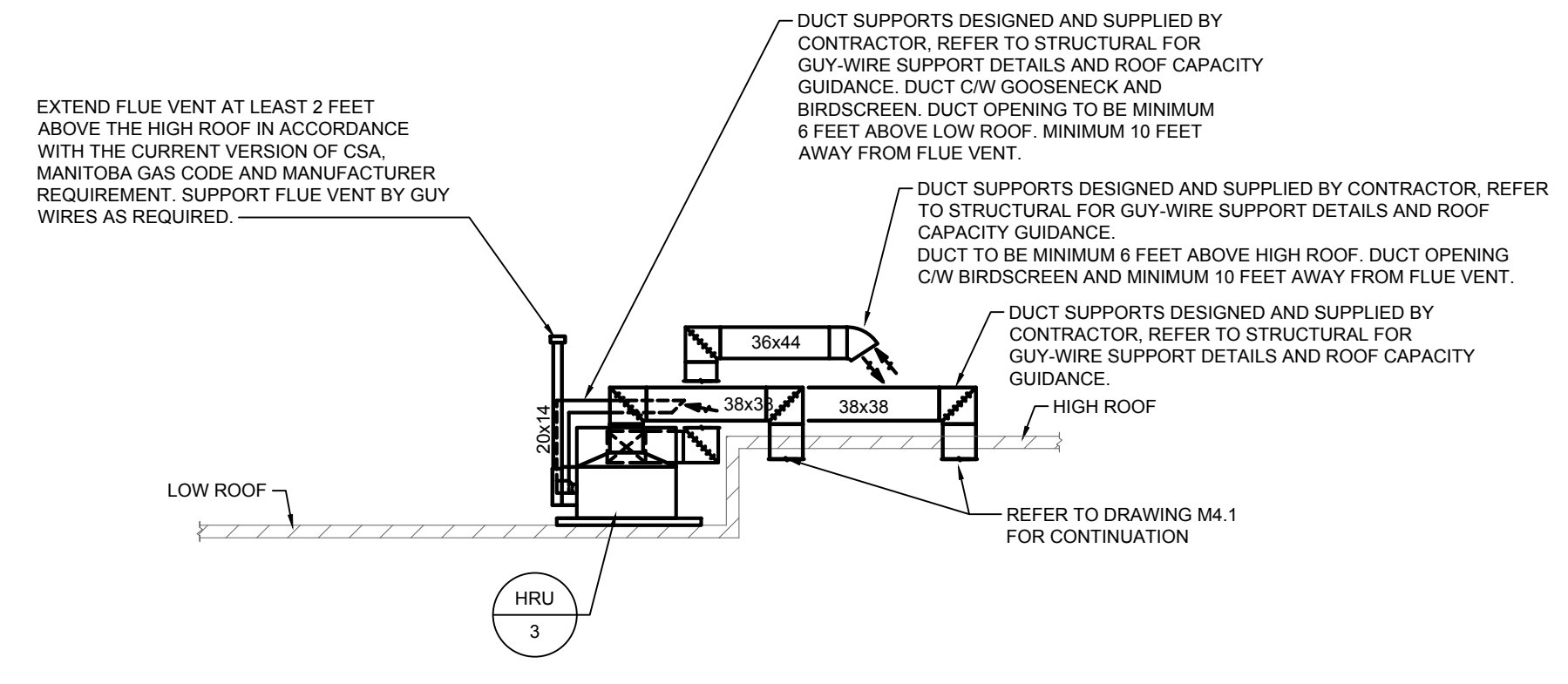


1 PARTIAL ROOF PLAN - VENTILATION - NEW CONSTRUCTION
 M4.2 SCALE: 1/16"=1'-0"



2 HRU SECTION VIEW
 M4.2 SCALE: NTS



3 HRU SECTION VIEW
 M4.2 SCALE: NTS



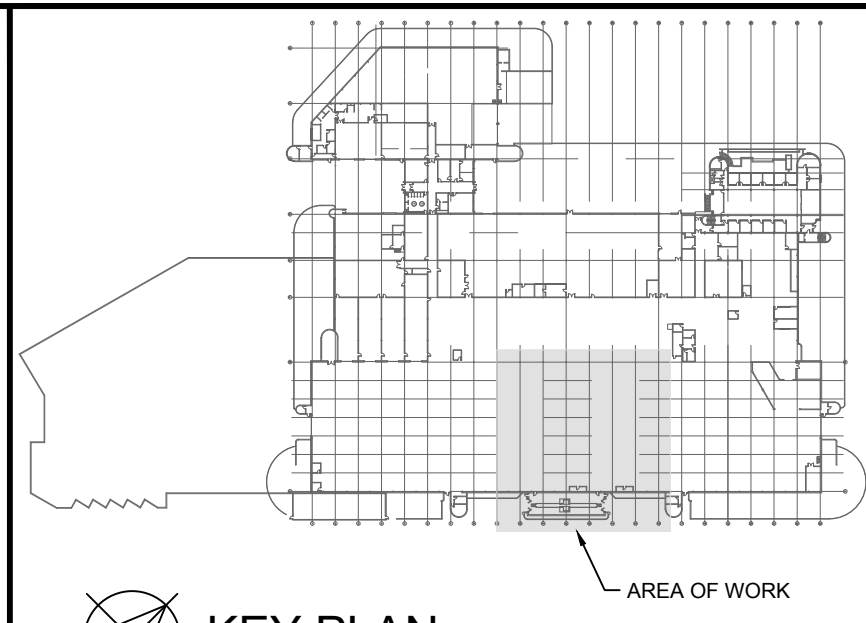
4 HRU CRANE LOCATION
 M4.2 SCALE: NTS

GENERAL NOTES

- A. ALL ABANDONED EQUIPMENT AND SERVICES WITHIN AREA OF WORK SHALL BE REMOVED.
- B. THIS BUILDING MAY CONTAIN ASBESTOS. REFER TO FRONT END SPECIFICATIONS FOR FURTHER INFORMATION.
- C. PRIOR TO DEMOLISHING AND REMOVAL OF THE EXISTING EQUIPMENT, COORDINATE WITH THE CITY. RETURN EQUIPMENT TO THE CITY AS REQUIRED.
- D. FOR DRAWING CLARITY, NOT ALL MECHANICAL EQUIPMENT, PIPING AND DUCTWORK HAS BEEN SHOWN.

KEY NOTES

- 1. NEW HRU; PRE-PURCHASED UNDER A SEPARATE SUPPLY AND DELIVERY CONTRACT. MECHANICAL CONTRACTOR SHALL ACCEPT DELIVERY OF UNITS AT SITE AND BE RESPONSIBLE FOR OFFLOADING THE UNITS.
- 2. REFER TO DETAIL DRAWINGS ON THIS SHEET.
- 3. REFER TO SPECIFICATION SECTION 238010 CLAUSE 2.3.2 FOR DUCT PRESSURE CLASS CONSTRUCTION REQUIREMENTS.
- 4. PROVIDE NEW DUCT TO HRU OPENING C/W GOOSENECK AND BIRDSCREEN.
- 5. EXTEND HRU FLUE VENT ABOVE HIGH ROOF. CONTRACTOR TO COORDINATE FINAL HEIGHT ON SITE.
- 6. PROVIDE NEW DUCT TO BYPASS INTAKE C/W GOOSENECK AND BIRDSCREEN.
- 7. CONTRACTOR IS RESPONSIBLE FOR COORDINATING DELIVERY OF HRU'S TO SITE AND ALL COSTS OF STORING THE HRU'S OFFSITE AS REQUIRED. THE NORTH SIDE OF EXISTING BUILDING MAY BE A SUITABLE LOCATION TO CRANE BUT WOULD REQUIRE FINAL REVIEW AND DISCUSSION WITH TRANSIT. CONTRACTOR SHALL BE RESPONSIBLE FOR ALL COSTS AND COORDINATE WITH THE CITY TO ACCOMPLISH CRANING PROCEDURES. NO ADDITIONAL PAYMENT WILL BE PROVIDED FOR OVERTIME WORK.
- 8. SUPPLY AIR DUCT DOWN TO THE BUILDING FROM HIGH ROOF. REFER TO DRAWING M4.1 FOR CONTINUATION.
- 9. EXHAUST AIR DUCT FROM BUILDING UP THROUGH HIGH ROOF. REFER TO DRAWING M4.1 FOR CONTINUATION.
- 10. LOCATION FOR FUTURE HRU ON ROOF. SHOWN FOR INFORMATION ONLY.
- 11. DUCT ON ROOF TO BE ELEVATED FROM FINISHED ROOFING.



KEY PLAN
 SCALE: NTS

6			
5			
4			
3			
2			
1			
0	ISSUED FOR CONSTRUCTION	JH	23/01/25
NO.	Description	BY	DD/MYY

**ENGINEERS
 GEOSCIENTISTS
 MANITOBA**
 Certificate of Authorization
SMS Engineering Ltd.
 No. 166

PROVINCE OF MANITOBA
J. T. HORROCKS
 Member
 24767
 23 Jan 25
 REGISTERED PROFESSIONAL ENGINEER

SMS Engineering
 770 Bradford Street Winnipeg, Canada (204) 775-0291
 24-256-01

Winnipeg Transit

Project Title
TRANSIT MAINTENANCE AND REPAIR BUILDING MECHANICAL UPGRADE - CENTRE HIGH BAY
 WINNIPEG MANITOBA

Drawing Title
PARTIAL ROOF PLAN - VENTILATION - NEW CONSTRUCTION

Drawn By	API/ KS	Checked By	JH	Approved By	JH
Scale	AS INDICATED	Date	DECEMBER 2024	Project No.	24-256-01
Revision Number	0	Drawing Number	M4.2	Sheet Order	10 OF 10

FILE NAME AND PATH: C:\ProgramData\256 Transit Maintenance Building Phase 6 HVAC Upgrade\01 CAD - Rev\03.5 Mech\PHASE 02\24256_M4.2_HV_A.dwg
 LAYOUT: M4.2 LAST SAVED BY: api LAST SAVED ON: 2024/12/20 10:03:22 AM