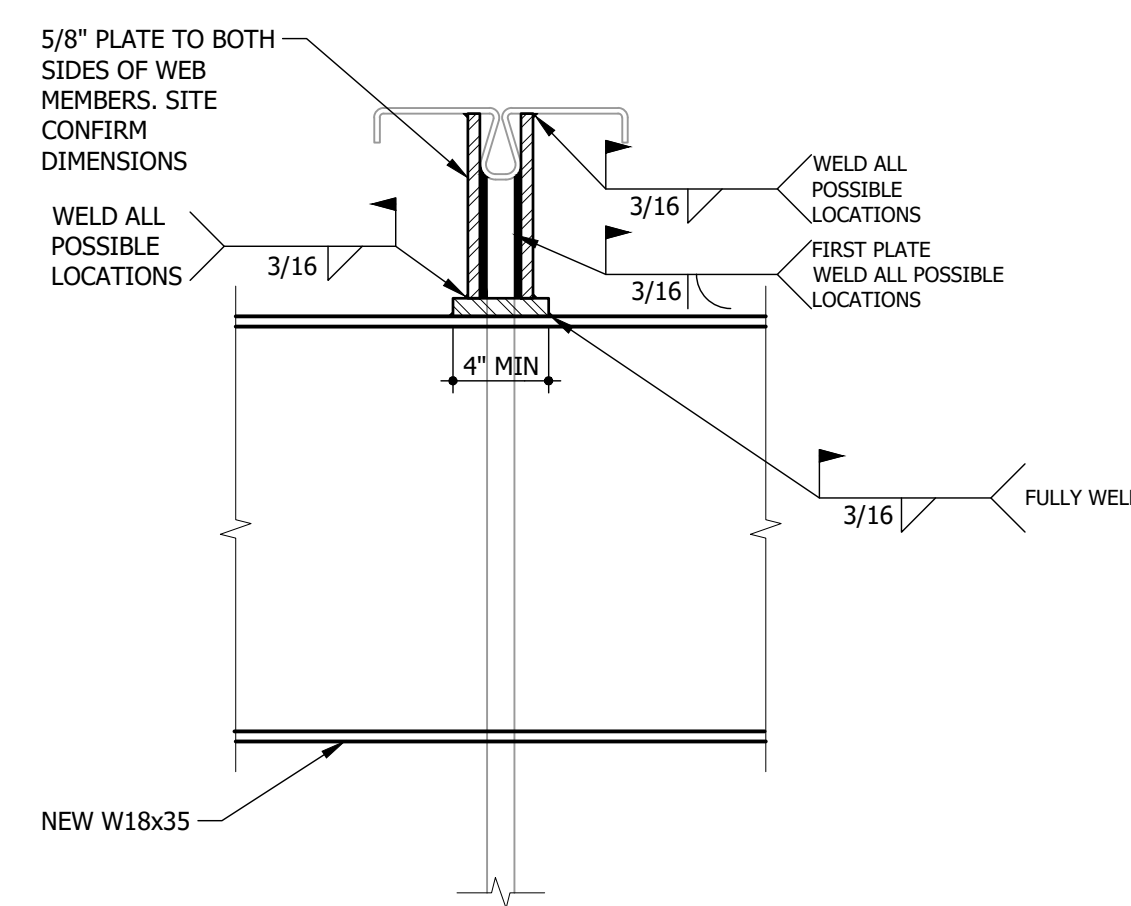
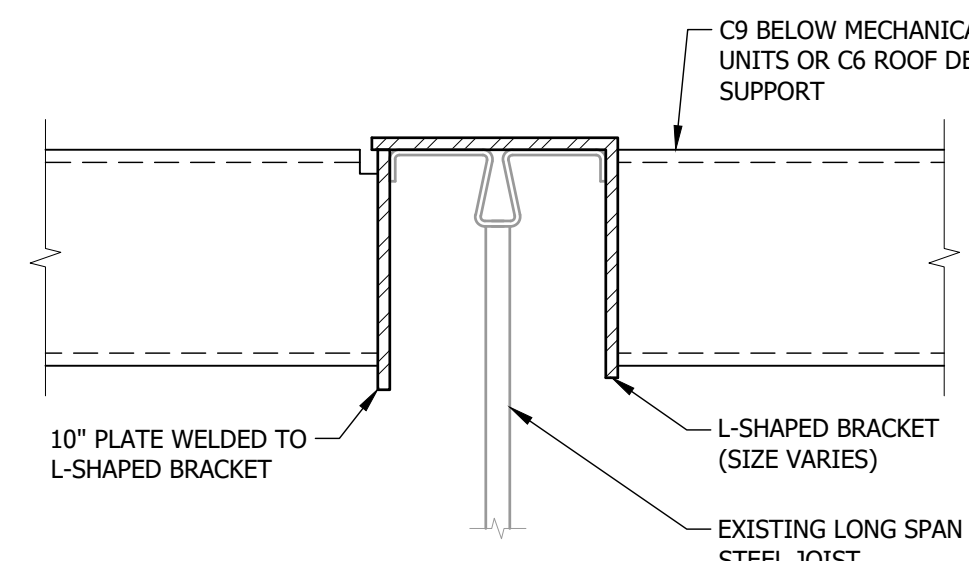


1 SECTION
S1.1 S2.1 3/8\"/>

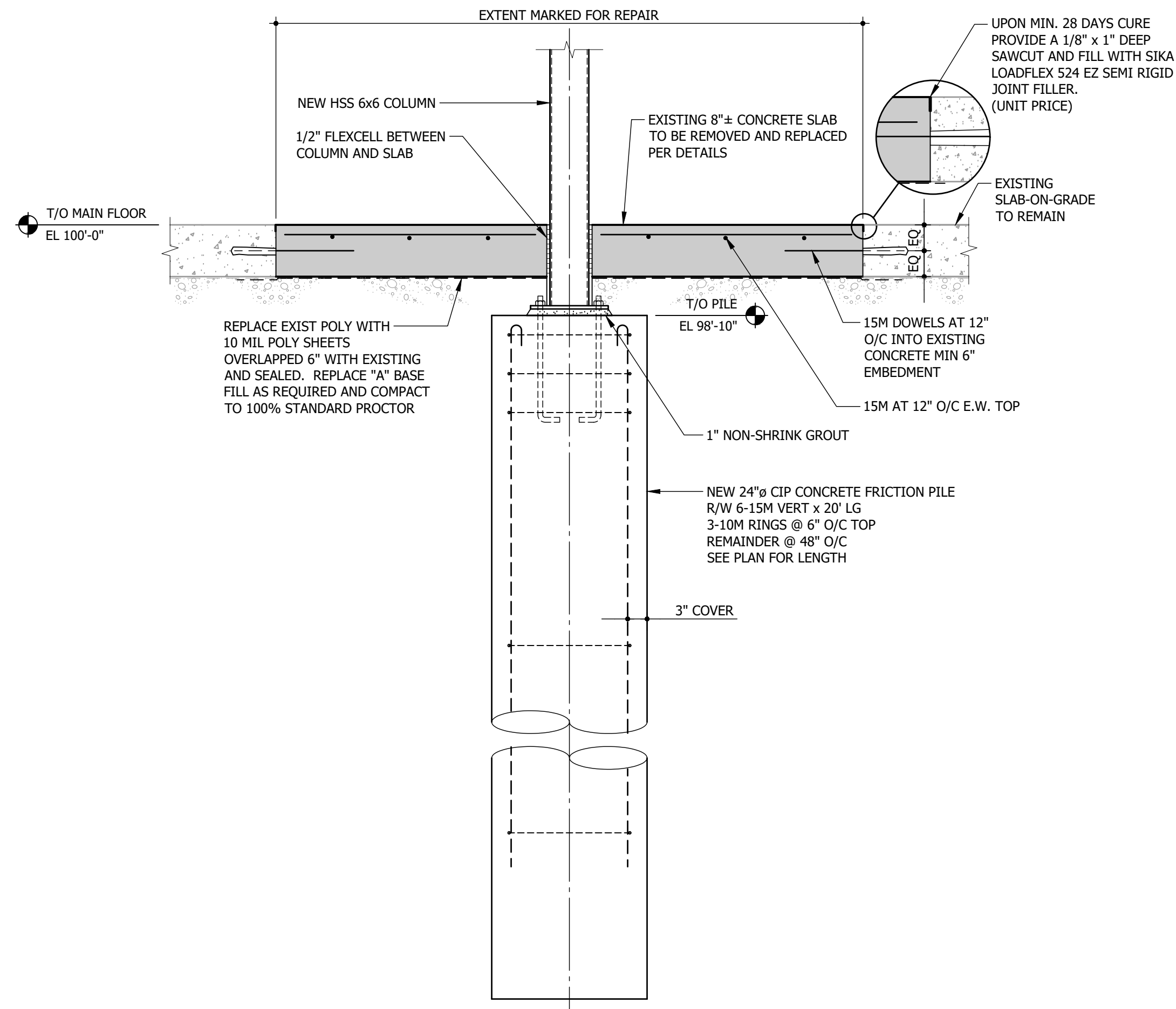


2 SECTION
S2.1 S2.1 1 1/2\"/>



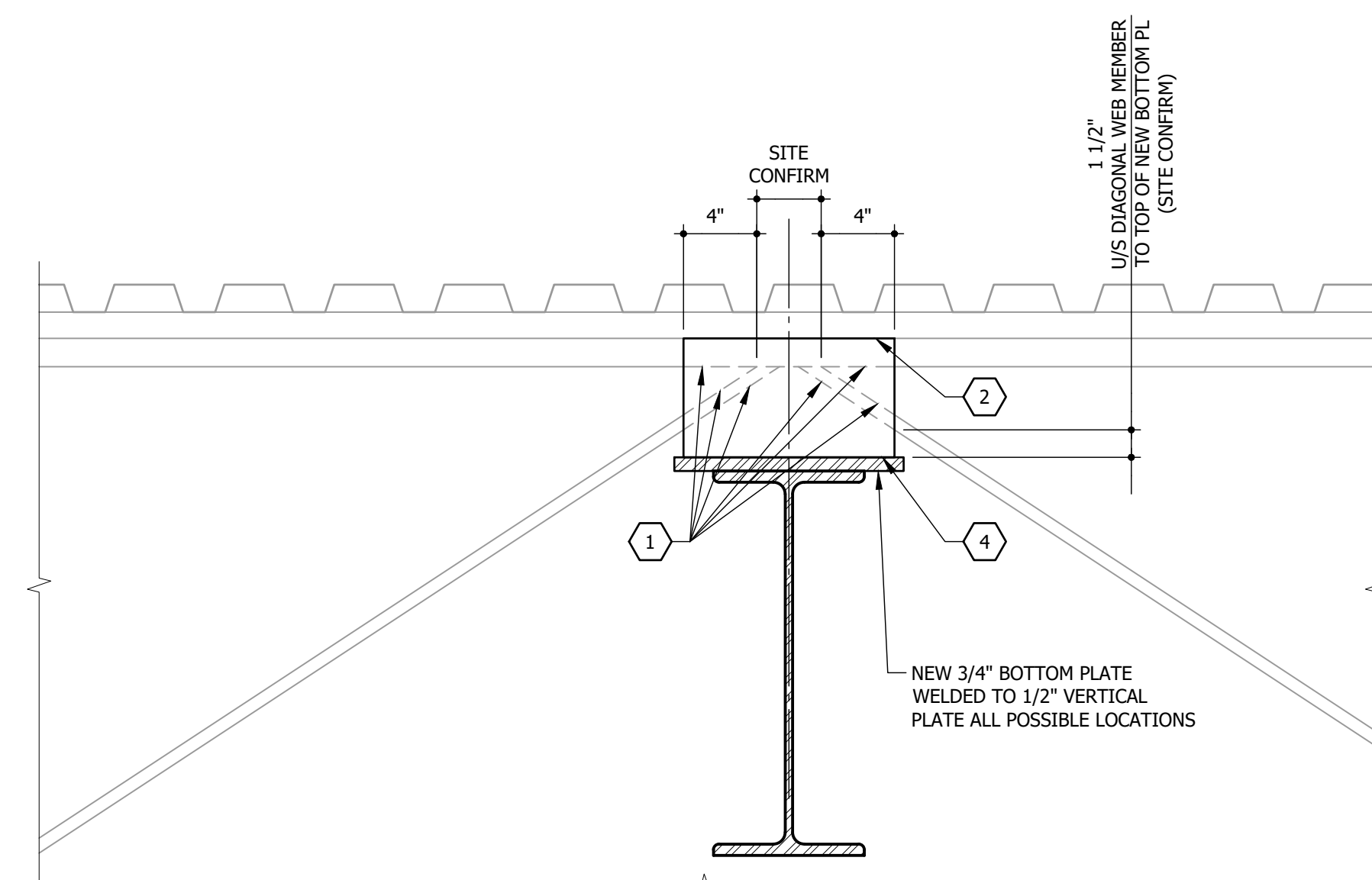
3 SECTION
S1.1 S2.1 1- 1/2\"/>

- TYPICAL CHANNEL TO EXISTING JOIST CONNECTION DETAIL
- EXISTING STEEL DECK NOT SHOWN FOR CLARITY



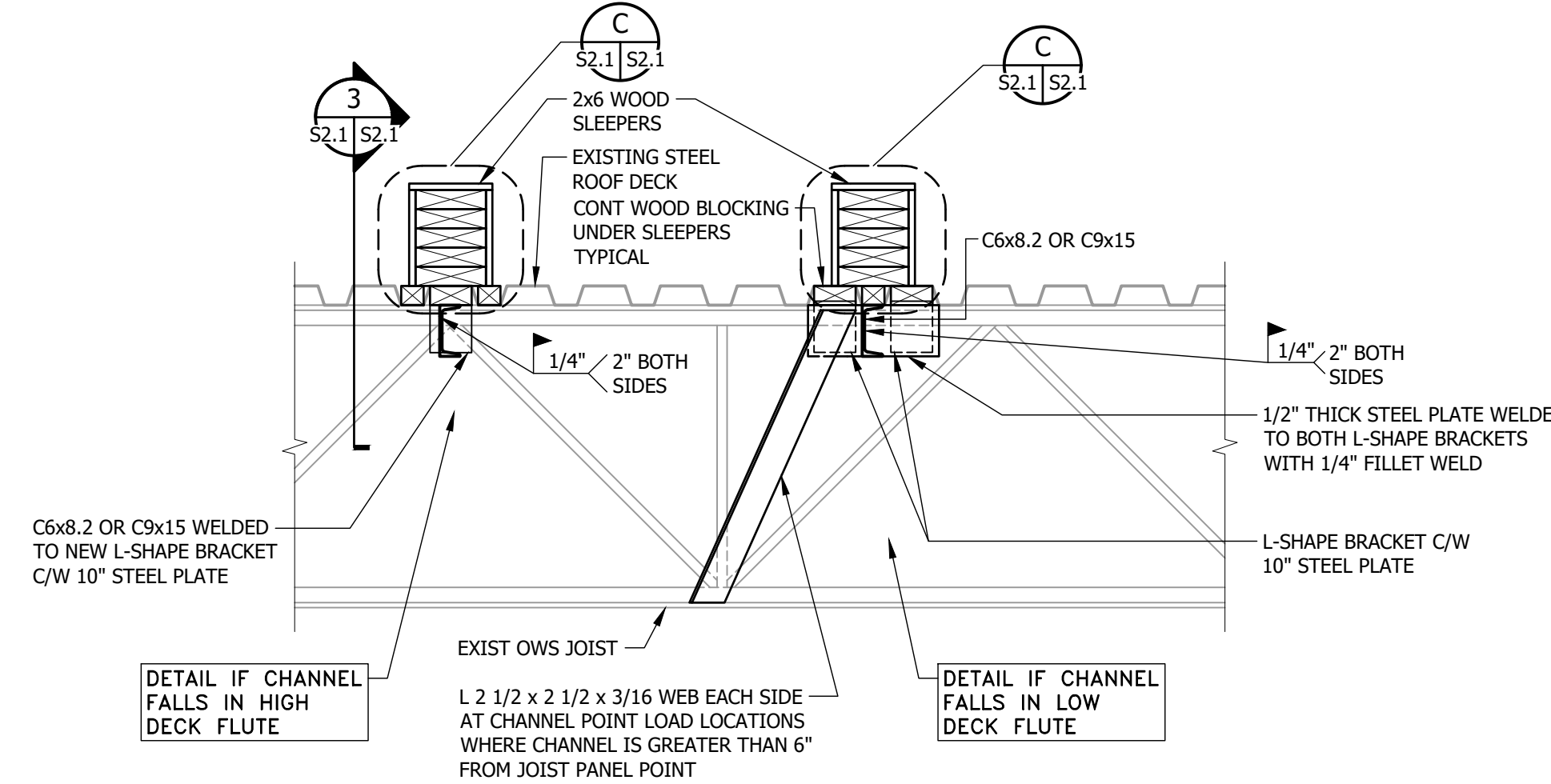
4 TYPICAL NEW PILE INSTALLATION AND SLAB-ON-GRADE INFILL DETAIL
S1.1 S2.1 3/4\"/>

- NOTES:
- PRIOR TO DEMOLITION, CONFIRM LOCATION(S) ANY OF EMBEDDED CONDUIT.
 - SAWCUT PERIMETER TO MIN 3/4\"/>

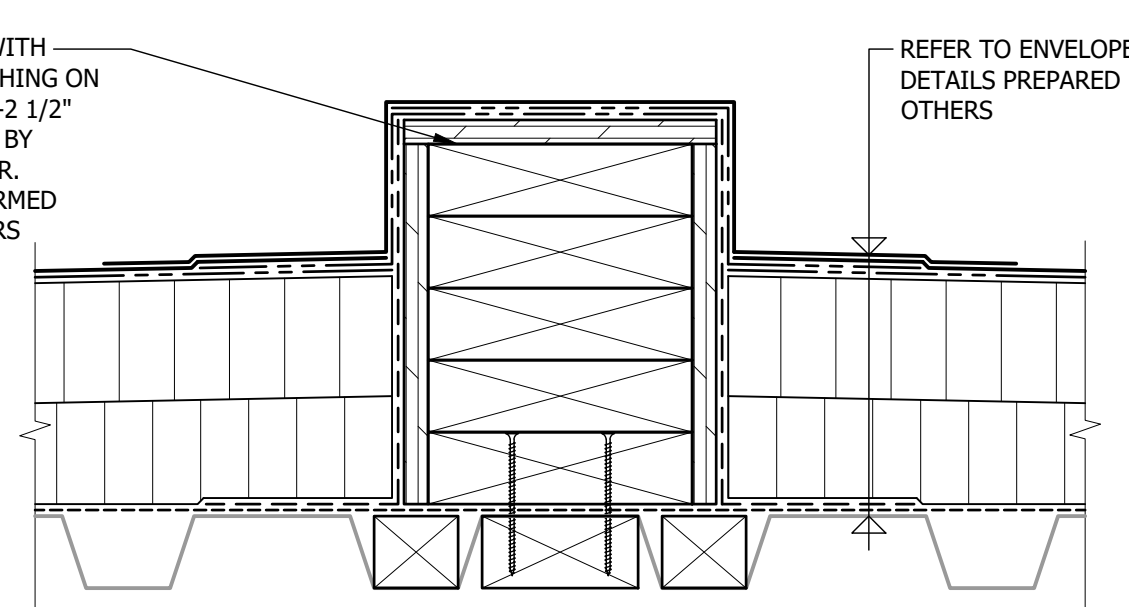


A SECTION DETAIL
S2.1 S2.1 1 1/2\"/>

- CONSTRUCTION SEQUENCE:
- INSTALL FIRST 5/8\"/>



B SUPPLEMENTAL STEEL SUPPORT BELOW MECHANICAL UNITS
S2.1 S2.1 1\"/>



C WOOD SLEEPER DETAIL
S2.1 S2.1 3\"/>



6		
5		
4		
3		
2		
1		
0	ISSUED FOR CONSTRUCTION	23/01/25
NO.	Description	BY



Project Title
TRANSIT MAINTENANCE AND REPAIR BUILDING MECHANICAL UPGRADE - CENTRE HIGH BAY

WINNIPEG MANITOBA
Drawing Title
JOIST REINFORCEMENT

JOIST ELEVATIONS, DETAILS & SECTIONS

Drawn By AJP	Checked By AL	Approved By JAL
Scale AS NOTED	Date JAN, 2025	Project No. 24-256-01
Revision Number 0	Drawing Number S2.1	Sheet Order 2 OF 2

FILE NAME AND PATH: C:\Users\jlp\OneDrive - Crozier Kilgour & Partners Ltd\Documents\2025\2025-01-23\24-256-01\24-256-01-01.dwg
 DATE: 2025-01-23 10:00:00 AM
 USER: jlp
 PLOT: 2025-01-23 10:00:00 AM
 PLOTTER: HP DesignJet T1300