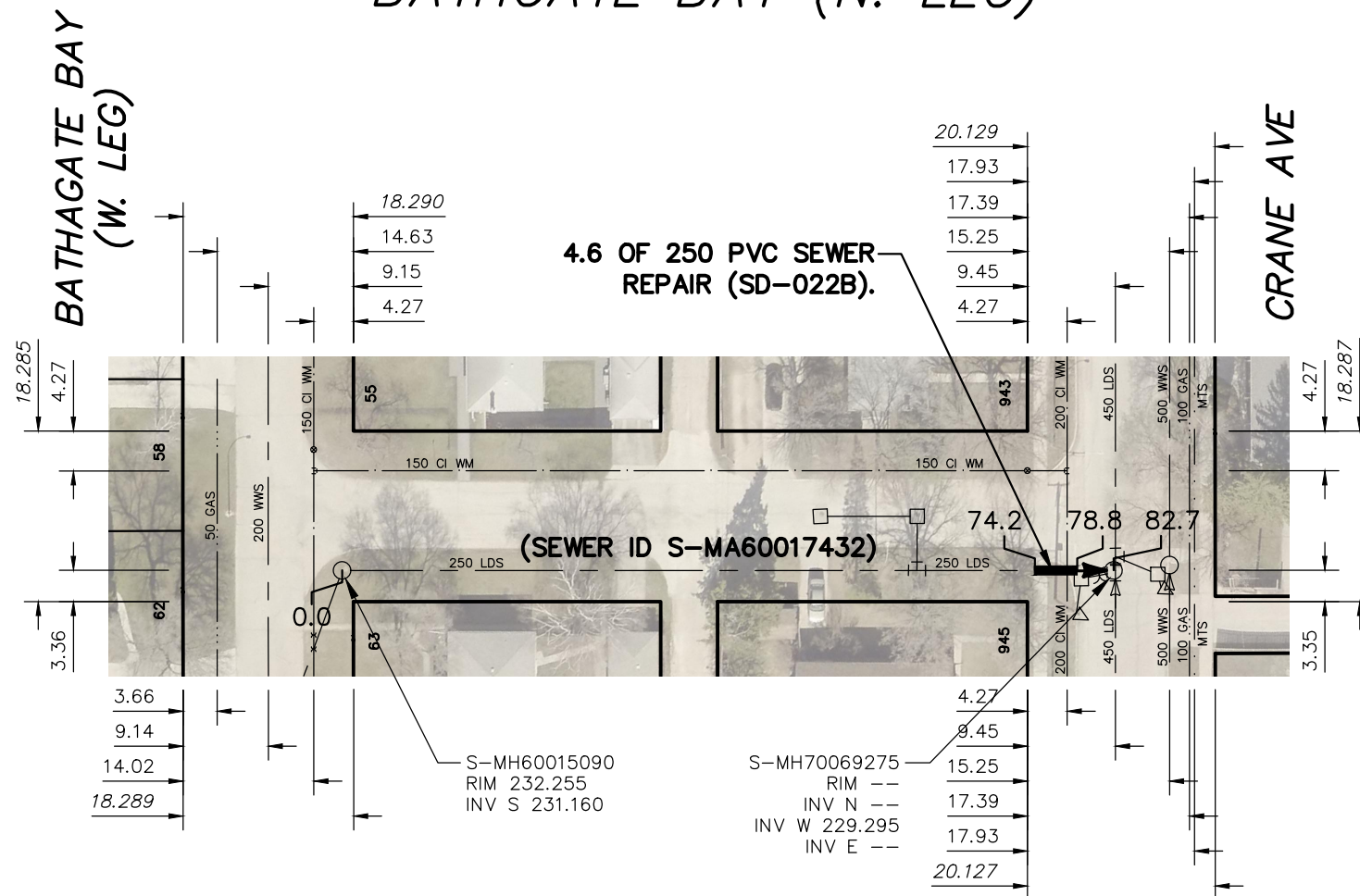
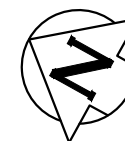


NOTE:
CROSSBORE CONDUIT.
COORDINATE WITH UTILITY
OWNER TO HAVE MOVED

BATHGATE BAY (N. LEG)



SEWER JUNCTION INFORMATION FROM SEWER VIDEO INSPECTION		
SEWER ID S-MA60017432		
DISTANCE FROM MH ID S-MH70069275	DIAMETER	CLOCK
****REVERSAL REQUIRED****		
****NO SERVICE JUNCTIONS***		

SEWER JUNCTION INFORMATION FROM SEWER VIDEO INSPECTION		
SEWER ID S-MA60017432		
DISTANCE FROM MH ID S-MH60015090	DIAMETER	CLOCK
****REVERSAL REQUIRED****		
****NO SERVICE JUNCTIONS***		

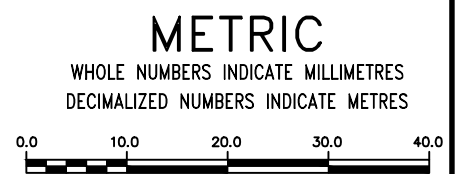
WARNING

IF POWER EQUIPMENT OR EXPLOSIVES ARE TO BE USED FOR EXCAVATION ON THIS PROJECT THE CONTRACTOR MUST:

- 1) NOTIFY THE GAS COMPANY OF THE PROPOSED LOCATION OF EXCAVATION.
- 2) TAKE PRECAUTION TO AVOID DAMAGE TO GAS COMPANY INSTALLATIONS.

SEE PROVINCIAL REGULATION 210/72 FOR DETAILS

FOR INDEX SEE 13387



LOCATION APPROVED UNDERGROUND STRUCTURES SUPV. U/G STRUCTURES COMMITTEE _____ DATE _____ NOTE: LOCATION OF UNDERGROUND STRUCTURES AS SHOWN ARE BASED ON THE BEST INFORMATION AVAILABLE BUT NO GUARANTEE IS GIVEN THAT ALL EXISTING UTILITIES ARE SHOWN OR THAT THE GIVEN LOCATIONS ARE EXACT. CONFIRMATION OF EXISTENCE AND EXACT LOCATION OF ALL SERVICES MUST BE OBTAINED FROM THE INDIVIDUAL UTILITIES BEFORE PROCEEDING WITH CONSTRUCTION.	B.M. ELEV.	DESIGNED BY RG CHECKED BY SC				THE CITY OF WINNIPEG WATER AND WASTE DEPARTMENT ENGINEERING DIVISION	SHEET 4 OF 33 CITY DRAWING NUMBER
	00 ISSUED FOR TENDER 2024/11/28 SC	DRAWN BY AJ APPROVED BY SC	SCALE: HORIZONTAL 1:750 VERTICAL				
NO. REVISIONS DATE BY	DATE 2024 11 28	DATE 2024 11 28	DATE	CONSULTANT DRAWING NUMBER	-	-	-