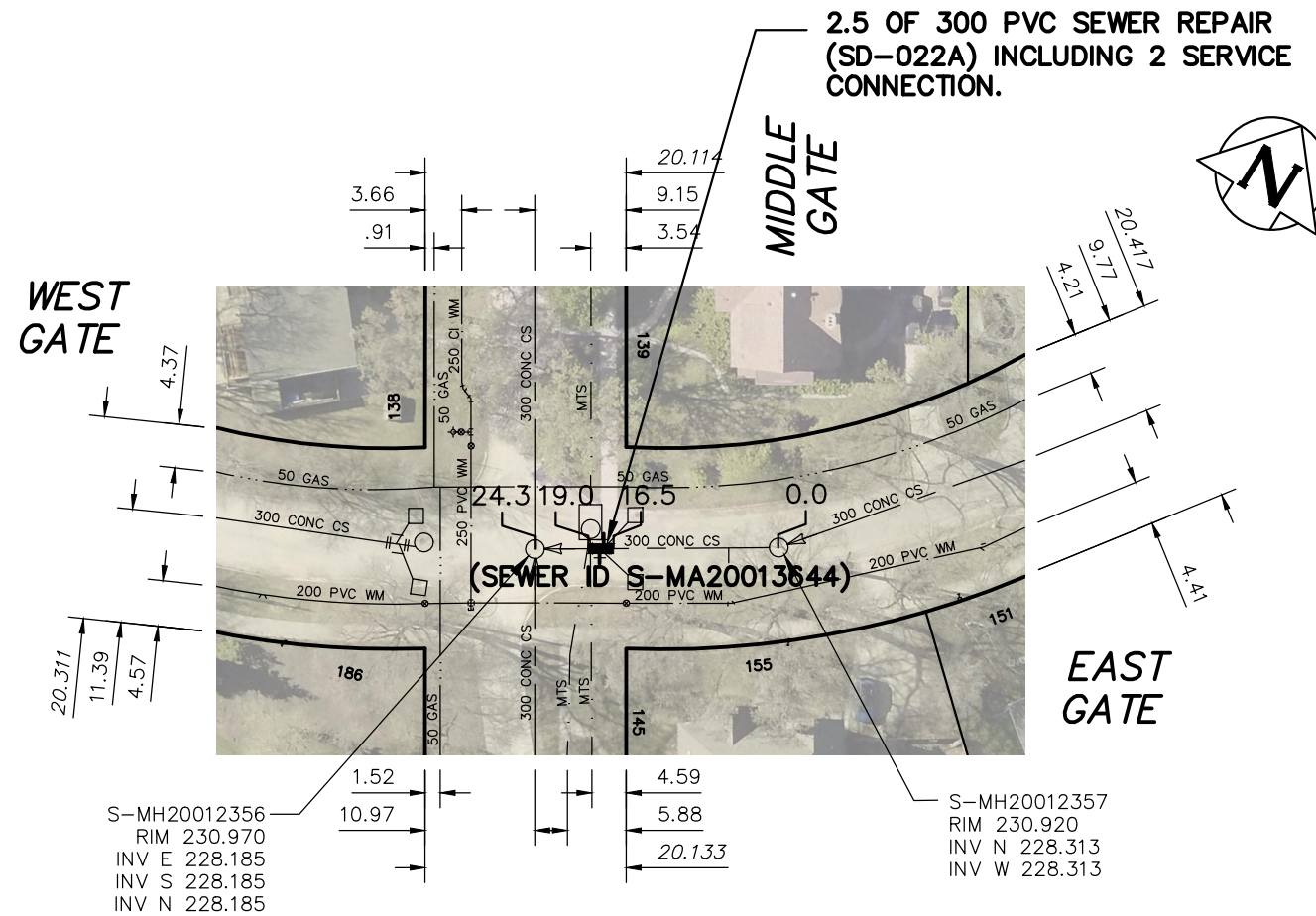


# EAST GATE



SEWER JUNCTION INFORMATION FROM SEWER VIDEO INSPECTION		
SEWER ID S-MA20013644		
DISTANCE FROM MH ID S-MH20012357		
DISTANCE	DIAMETER	CLOCK
5.0	150	9
17.5	300	3
17.9	300	9

## WARNING

IF POWER EQUIPMENT OR EXPLOSIVES ARE TO BE USED FOR EXCAVATION ON THIS PROJECT THE CONTRACTOR MUST:

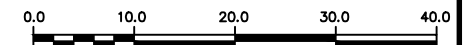
- 1) NOTIFY THE GAS COMPANY OF THE PROPOSED LOCATION OF EXCAVATION.
- 2) TAKE PRECAUTION TO AVOID DAMAGE TO GAS COMPANY INSTALLATIONS.

SEE PROVINCIAL REGULATION 210/72 FOR DETAILS

FOR INDEX SEE 13387

## METRIC

WHOLE NUMBERS INDICATE MILLIMETRES  
DECIMALIZED NUMBERS INDICATE METRES



### LOCATION APPROVED UNDERGROUND STRUCTURES

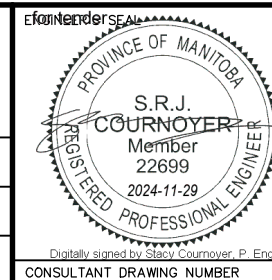
SUPV. U/G STRUCTURES COMMITTEE DATE

#### NOTE:

LOCATION OF UNDERGROUND STRUCTURES AS SHOWN ARE BASED ON THE BEST INFORMATION AVAILABLE BUT NO GUARANTEE IS GIVEN THAT ALL EXISTING UTILITIES ARE SHOWN OR THAT THE GIVEN LOCATIONS ARE EXACT. CONFIRMATION OF EXISTENCE AND EXACT LOCATION OF ALL SERVICES MUST BE OBTAINED FROM THE INDIVIDUAL UTILITIES BEFORE PROCEEDING WITH CONSTRUCTION.

B.M. ELEV.			
NO.	REVISIONS	DATE	BY
00	ISSUED FOR TENDER	2024/11/28	SC

DESIGNED BY	RG	CHECKED BY	SC
DRAWN BY	AJ	APPROVED BY	SC
SCALE:		RELEASED FOR CONSTRUCTION	
HORIZONTAL	1:750		
VERTICAL			
DATE	2024 11 28	DATE	



## THE CITY OF WINNIPEG

WATER AND WASTE DEPARTMENT  
ENGINEERING DIVISION

2024 SEWER RENEWALS  
and EXTERNAL POINT REPAIRS  
**EAST GATE**  
1ST MH E OF MIDDLE GT TO  
MH AT MIDDLE GT

SHEET 14 OF 33  
CITY DRAWING NUMBER

13399

PLOT DATE: 2024 11 28

BID OPPORTUNITY: 968-2024  
CONTRACT NUMBER: 7

FILE PATH: R:\DRAWINGS\SEWER\2024 RENEWALS\968-2024 Cont #7\CONSTRUCTION DWGS\  
FILE NAME: EAST\_GT\_S-MA20013644.dwg