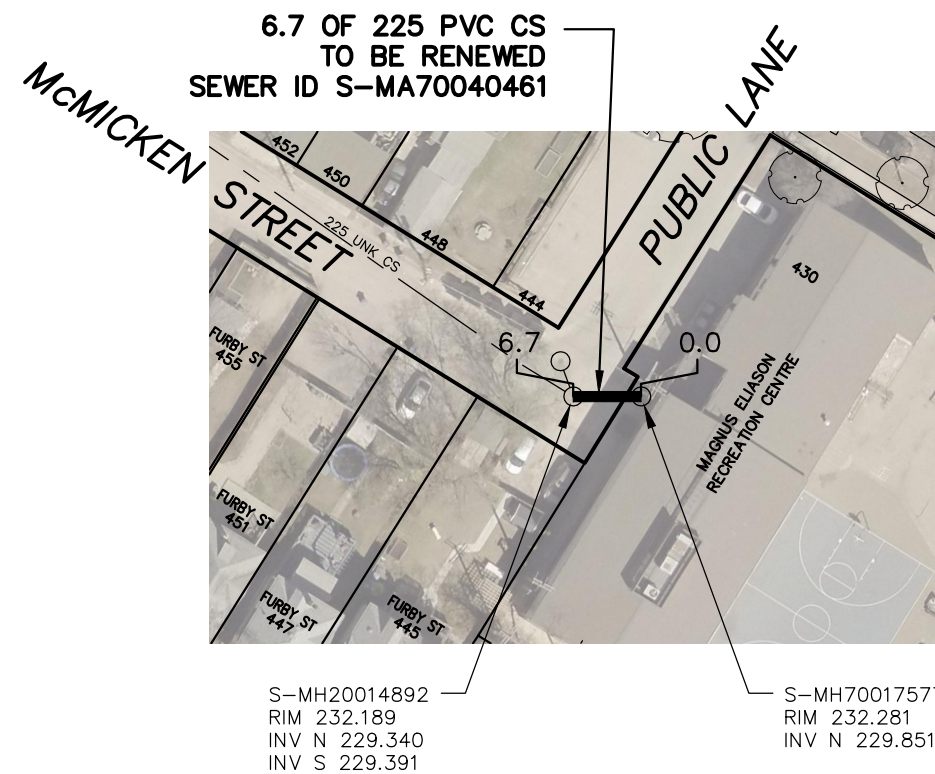


# McMICKEN STREET



SEWER JUNCTION INFORMATION FROM SEWER VIDEO INSPECTION		
SEWER ID S-MA70040461		
DISTANCE FROM MH ID MH-70017577		
DISTANCE	DIAMETER	CLOCK
*** NO SERVICE JUNCTIONS ***		

### WARNING

IF POWER EQUIPMENT OR EXPLOSIVES ARE TO BE USED FOR EXCAVATION ON THIS PROJECT THE CONTRACTOR MUST:

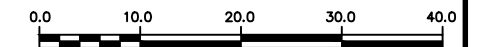
- 1) NOTIFY THE GAS COMPANY OF THE PROPOSED LOCATION OF EXCAVATION.
- 2) TAKE PRECAUTION TO AVOID DAMAGE TO GAS COMPANY INSTALLATIONS.

SEE PROVINCIAL REGULATION 210/72 FOR DETAILS

**FOR INDEX SEE  
13387**

### METRIC

WHOLE NUMBERS INDICATE MILLIMETRES  
DECIMALIZED NUMBERS INDICATE METRES



### LOCATION APPROVED UNDERGROUND STRUCTURES

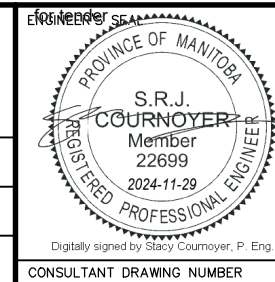
SUPV. U/G STRUCTURES COMMITTEE	DATE

#### NOTE:

LOCATION OF UNDERGROUND STRUCTURES AS SHOWN ARE BASED ON THE BEST INFORMATION AVAILABLE BUT NO GUARANTEE IS GIVEN THAT ALL EXISTING UTILITIES ARE SHOWN OR THAT THE GIVEN LOCATIONS ARE EXACT. CONFIRMATION OF EXISTENCE AND EXACT LOCATION OF ALL SERVICES MUST BE OBTAINED FROM THE INDIVIDUAL UTILITIES BEFORE PROCEEDING WITH CONSTRUCTION.

B.M. ELEV.	NO.	ISSUED FOR TENDER	DATE	BY

DESIGNED BY	RG	CHECKED BY	SC
DRAWN BY	AOM	APPROVED BY	SC
SCALE:		RELEASED FOR CONSTRUCTION	
HORIZONTAL	1:750		
VERTICAL			
DATE	2024 11 28	DATE	



## THE CITY OF WINNIPEG

WATER AND WASTE DEPARTMENT  
ENGINEERING DIVISION

2024 SEWER RENEWALS  
and EXTERNAL POINT REPAIRS  
**McMICKEN STREET**  
1ST MH S OF ELLICE AVENUE TO  
2ND MH S OF ELLICE AVENUE

SHEET 24 OF 33  
CITY DRAWING NUMBER

13410