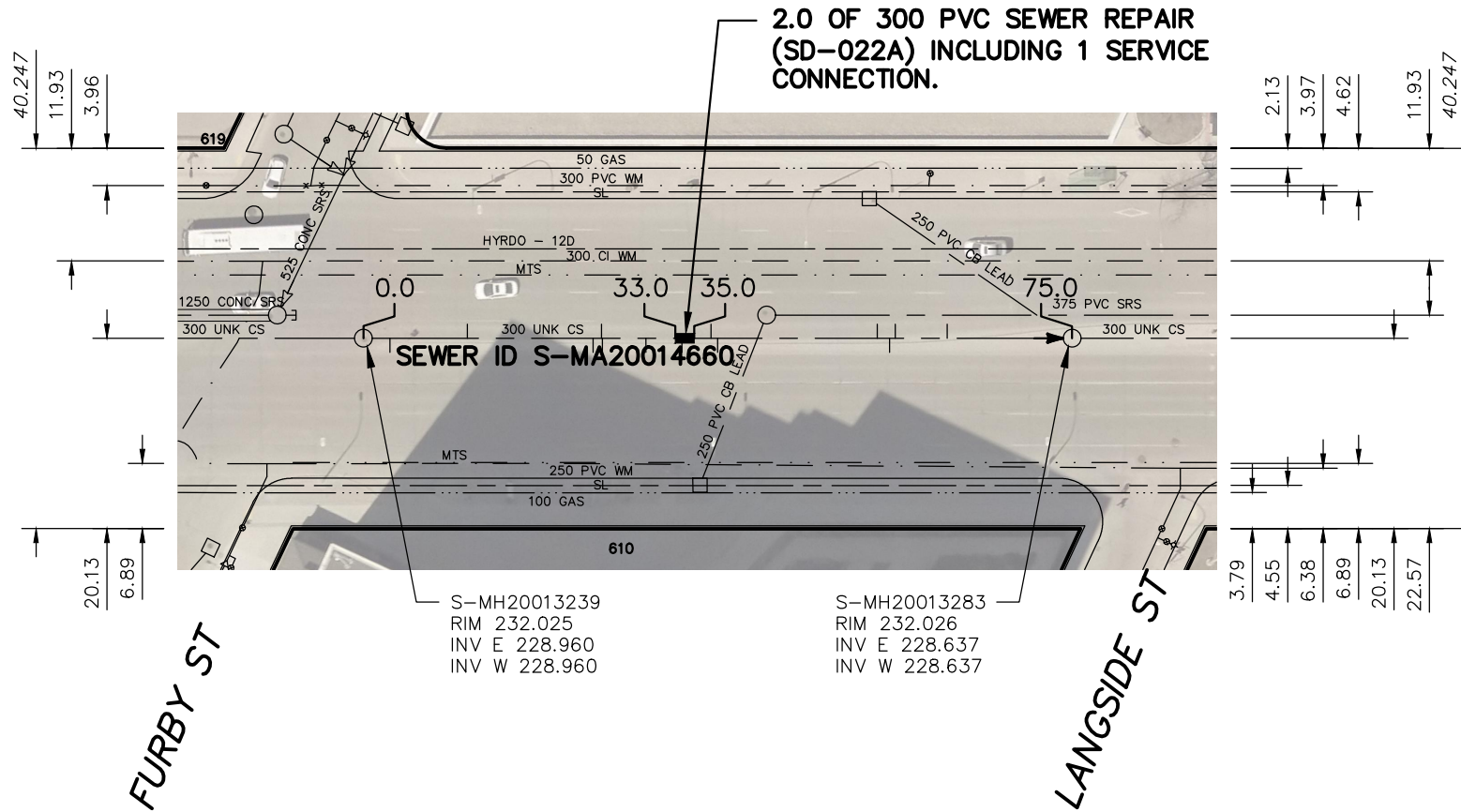


PORTAGE AVENUE (CL)

**NOTE:
REMOVE FLUSHER HEAD**



SEWER JUNCTION INFORMATION FROM SEWER VIDEO INSPECTION SEWER ID S-MA20014460		
DISTANCE FROM MH ID S-MH20013239		
DISTANCE	DIAMETER	CLOCK
2.8	250	2
11.0	150	11
24.3	150	1
25.2	150	10
25.3	150	2
29.9	150	1
33.7	250	2



SEWER JUNCTION INFORMATION FROM SEWER VIDEO INSPECTION SEWER ID S-MA20014460		
DISTANCE FROM MH ID S-MH20013283		
** REVERSAL REQUIRED **		
DISTANCE	DIAMETER	CLOCK
13.2	250	2
18.7	250	2
19.3	150	11
20.6	250	2
37.5	150	11
38.2	150	1

WARNING

IF POWER EQUIPMENT OR EXPLOSIVES ARE TO BE USED FOR EXCAVATION ON THIS PROJECT THE CONTRACTOR MUST:

- 1) NOTIFY THE GAS COMPANY OF THE PROPOSED LOCATION OF EXCAVATION.
- 2) TAKE PRECAUTION TO AVOID DAMAGE TO GAS COMPANY INSTALLATIONS.

SEE PROVINCIAL REGULATION 210/72 FOR DETAILS

FOR INDEX SEE
13387

METRIC

WHOLE NUMBERS INDICATE MILLIMETRES
DECIMALIZED NUMBERS INDICATE METRES



LOCATION APPROVED UNDERGROUND STRUCTURES

SUPV. U/G STRUCTURES COMMITTEE DATE

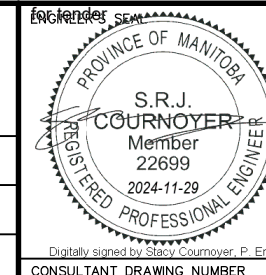
NOTE:

LOCATION OF UNDERGROUND STRUCTURES AS SHOWN ARE BASED ON THE BEST INFORMATION AVAILABLE BUT NO GUARANTEE IS GIVEN THAT ALL EXISTING UTILITIES ARE SHOWN OR THAT THE GIVEN LOCATIONS ARE EXACT. CONFIRMATION OF EXISTENCE AND EXACT LOCATION OF ALL SERVICES MUST BE OBTAINED FROM THE INDIVIDUAL UTILITIES BEFORE PROCEEDING WITH CONSTRUCTION.

B.M.
ELEV.

NO.	REVISIONS	DATE	BY
00	ISSUED FOR TENDER	2024/11/28	SC

DESIGNED BY	RG	CHECKED BY	SC
DRAWN BY	AOM	APPROVED BY	SC
SCALE:		RELEASED FOR CONSTRUCTION	
HORIZONTAL	1: 750		
VERTICAL			
DATE	2024 11 28	DATE	



THE CITY OF WINNIPEG

WATER AND WASTE DEPARTMENT
ENGINEERING DIVISION

2024 SEWER RENEWALS
and EXTERNAL POINT REPAIRS
PORTAGE AVENUE (CL)
MH AT FURBY STREET (E R) TO
1ST MH E OF FURBY STREET

SHEET 28 OF 33
CITY DRAWING NUMBER

13414

PLOT DATE: 2024 11 28

BID OPPORTUNITY: 968-2024
CONTRACT NUMBER: 7

FILE PATH: R:\DRAWINGS\SEWER\2024 RENEWALS\968-2024 Cont #7\CONSTRUCTION DWGS\
FILE NAME: PORTAGE AVE (CL)_S-MA20014660.dwg