

NOTES:

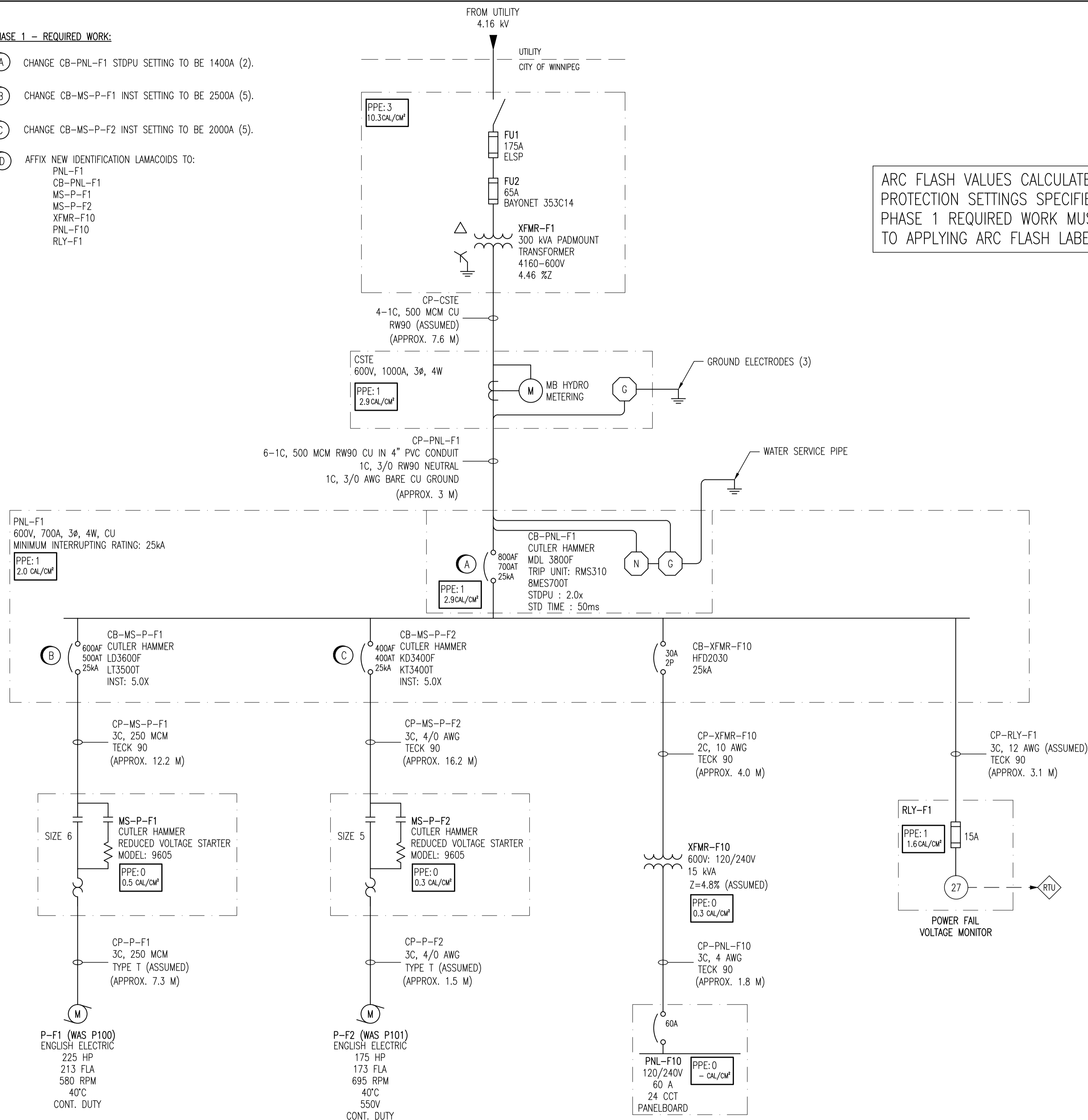
- 1. THIS DRAWING SUPERCEDES 1-04XXA-F-E0001.
- 2. THIS DRAWING CONTAINS UNVERIFIED INFORMATION FROM EXISTING DOCUMENTATION.
- 3. THE ENGINEER'S RESPONSIBILITY IS LIMITED TO THE ARC FLASH STUDY AND RECOMMENDED MITIGATION.

LEGEND:

PPE: 4 → HAZARD/RISK CATEGORY
 29 CAL/CM² → INCIDENT ENERGY

PHASE 1 - REQUIRED WORK:

- (A) CHANGE CB-PNL-F1 STDPU SETTING TO BE 1400A (2).
- (B) CHANGE CB-MS-P-F1 INST SETTING TO BE 2500A (5).
- (C) CHANGE CB-MS-P-F2 INST SETTING TO BE 2000A (5).
- (D) AFFIX NEW IDENTIFICATION LAMACOIDS TO:
 PNL-F1
 CB-PNL-F1
 MS-P-F1
 MS-P-F2
 XFMR-F10
 PNL-F10
 RLY-F1



ARC FLASH VALUES CALCULATED ARE BASED ON THE PROTECTION SETTINGS SPECIFIED IN THIS DRAWING. ALL PHASE 1 REQUIRED WORK MUST BE COMPLETED PRIOR TO APPLYING ARC FLASH LABELS.

<p>SNC-LAVALIN INC. 148 Nature Park Way Winnipeg, MB, Canada R3P 0X7 204-798-8080</p>				ENGINEER'S SEAL ORIGINAL DRAWING SEALED BY: C. J. REIMER SNC-LAVALIN MEMBER # 21968 2011/05/19 REV. 00		<p>THE CITY OF WINNIPEG WATER AND WASTE DEPARTMENT</p>	
DESIGNED BY: EXISTING DRAWN BY: S. COATES SCALE: NTS DATE: 2009/09/15 CONSULTANT NO.:				CHECKED BY: C. REIMER APPROVED BY: C. REIMER RELEASED FOR CONSTRUCTION BY: DATE:		COLONY FLOOD PUMPING STATION ARC FLASH STUDY SINGLE LINE DIAGRAM	
00 ISSUED FOR CITY USE 2011/05/19 APS CJR				CITY DRAWING NUMBER 1-0128F-E0001		SHEET REV. SIZE 001 00 A1	

NOTES:

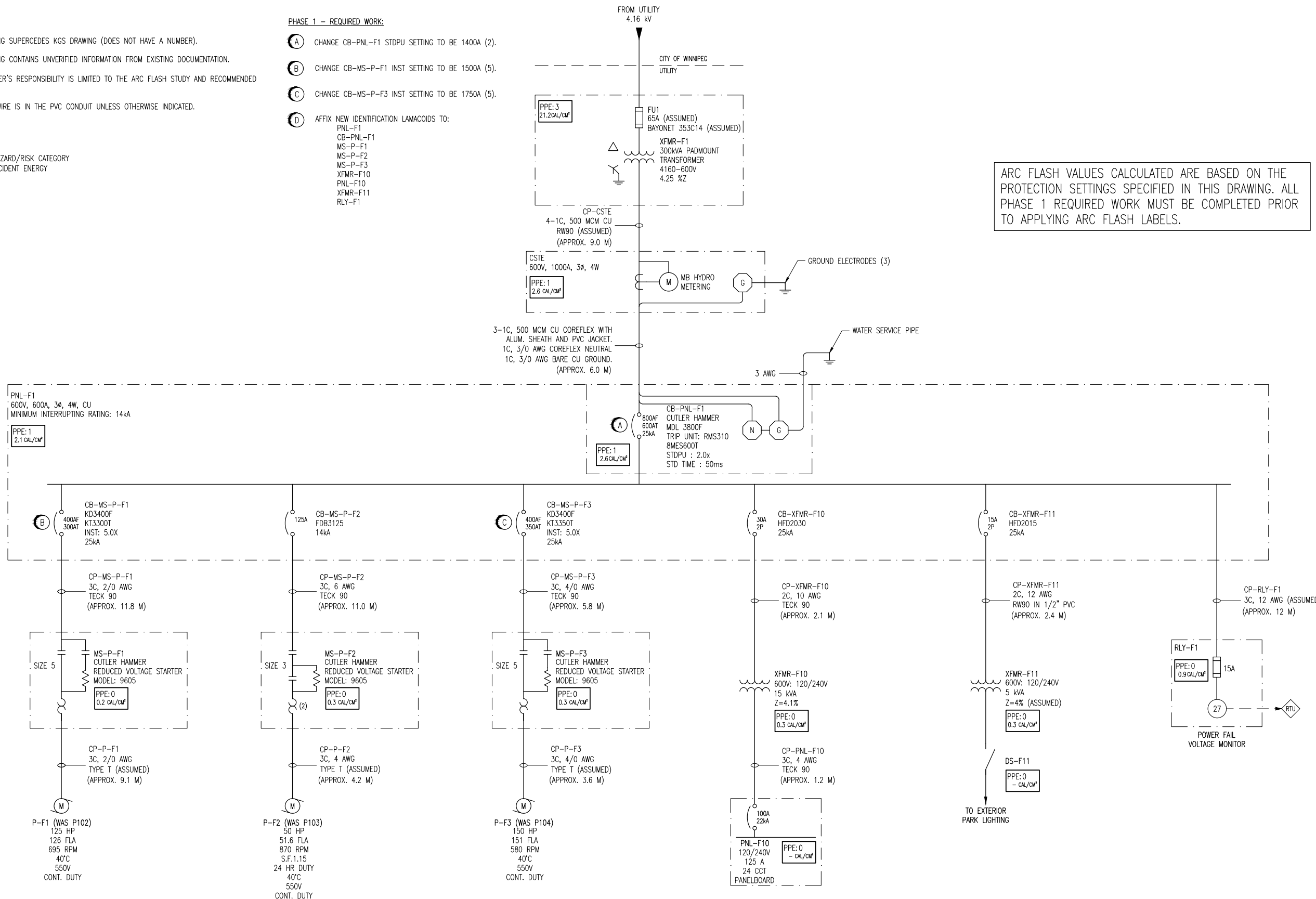
1. THIS DRAWING SUPERCEDES KGS DRAWING (DOES NOT HAVE A NUMBER).
2. THIS DRAWING CONTAINS UNVERIFIED INFORMATION FROM EXISTING DOCUMENTATION.
3. THE ENGINEER'S RESPONSIBILITY IS LIMITED TO THE ARC FLASH STUDY AND RECOMMENDED MITIGATION.
4. ALL RW90 WIRE IS IN THE PVC CONDUIT UNLESS OTHERWISE INDICATED.

LEGEND:

PPE-4 → HAZARD/RISK CATEGORY
 29 CAL/CM² → INCIDENT ENERGY

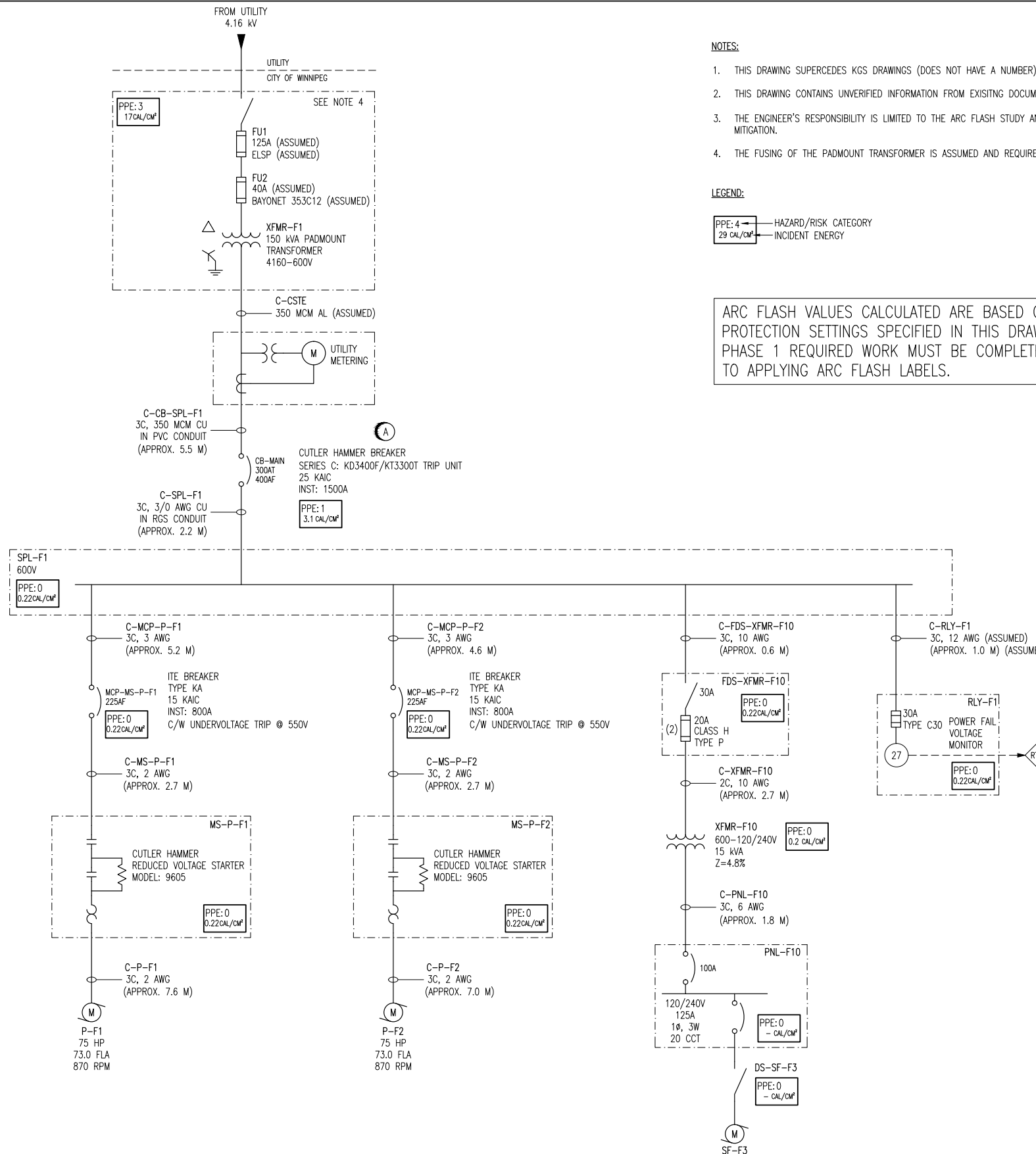
PHASE 1 - REQUIRED WORK:

- (A) CHANGE CB-PNL-F1 STDPU SETTING TO BE 1400A (2).
- (B) CHANGE CB-MS-P-F1 INST SETTING TO BE 1500A (5).
- (C) CHANGE CB-MS-P-F3 INST SETTING TO BE 1750A (5).
- (D) AFFIX NEW IDENTIFICATION LAMACOIDS TO:
 PNL-F1
 CB-PNL-F1
 MS-P-F1
 MS-P-F2
 MS-P-F3
 XFMR-F10
 PNL-F10
 XFMR-F11
 RLY-F1



ARC FLASH VALUES CALCULATED ARE BASED ON THE PROTECTION SETTINGS SPECIFIED IN THIS DRAWING. ALL PHASE 1 REQUIRED WORK MUST BE COMPLETED PRIOR TO APPLYING ARC FLASH LABELS.

<p>SNC-LAVALIN INC. 148 Nature Park Way Winnipeg, MB, Canada R3P 0X7 204-786-8080</p>				<p>ENGINEER'S SEAL</p>	
<p>DESIGNED BY: T. CHURCH</p>		<p>CHECKED BY: C. REIMER</p>		<p>ORIGINAL DRAWING SEALED BY: C. J. REIMER APPROVED BY: C. REIMER MEMBER #21968 2011/05/19 REV. 00</p>	
<p>DRAWN BY: S. COATES</p>		<p>APPROVED BY: C. REIMER</p>			
<p>SCALE: NTS</p>		<p>RELEASED FOR CONSTRUCTION BY: DATE:</p>			
<p>DATE: 2009/09/15</p>		<p>CONSULTANT NO.:</p>		<p>CITY DRAWING NUMBER 1-0132F-E0001</p>	
<p>00 ISSUED FOR CITY USE</p>		<p>2011/05/19</p>		<p>SHEET REV. SIZE 001 00 A1</p>	
<p>NO. REVISIONS</p>		<p>DATE DESIGN CHECK</p>		<p>1-0132F-E0001-001-00.dwg</p>	



NOTES:

1. THIS DRAWING SUPERCEDES KGS DRAWINGS (DOES NOT HAVE A NUMBER).
2. THIS DRAWING CONTAINS UNVERIFIED INFORMATION FROM EXISTING DOCUMENTATION.
3. THE ENGINEER'S RESPONSIBILITY IS LIMITED TO THE ARC FLASH STUDY AND RECOMMENDED MITIGATION.
4. THE FUSING OF THE PADMOUNT TRANSFORMER IS ASSUMED AND REQUIRES CONFIRMATION.

LEGEND:

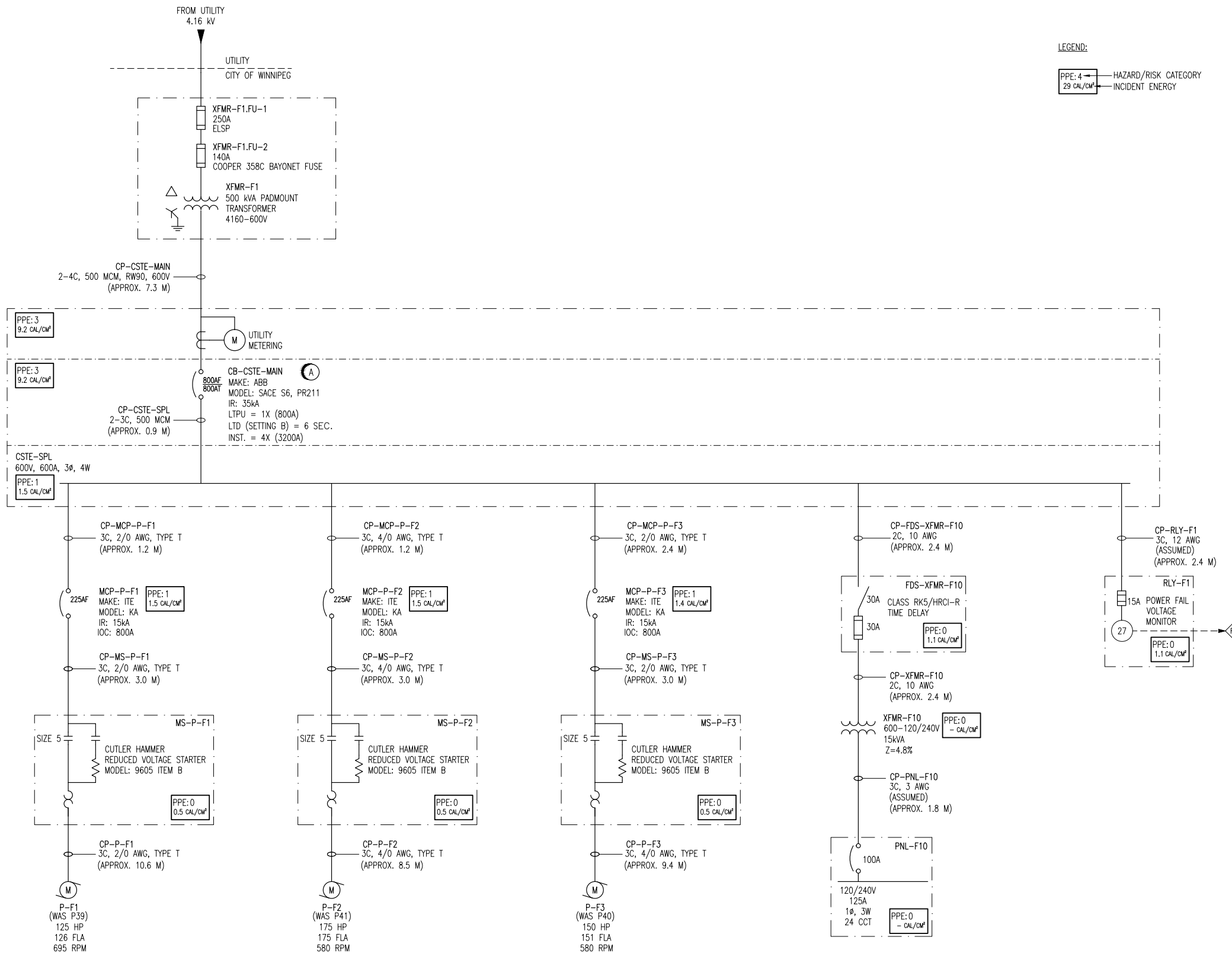
PPE: 4 — HAZARD/RISK CATEGORY
 29 cal/cm² — INCIDENT ENERGY

ARC FLASH VALUES CALCULATED ARE BASED ON THE PROTECTION SETTINGS SPECIFIED IN THIS DRAWING. ALL PHASE 1 REQUIRED WORK MUST BE COMPLETED PRIOR TO APPLYING ARC FLASH LABELS.

PHASE 1 REQUIRED WORK:

- (A) CHANGE CB-MAIN INST. SETTING TO 5X (1500A)
- (B) AFFIX NEW IDENTIFICATION LAMACOIDS TO:
 XFMR-F1
 CB-MAIN
 SPL-F1
 MCP-MS-P-F1
 MS-P-F1
 MCP-MS-P-F2
 MS-P-F2
 FDS-XFMR-F10
 XFMR-F10
 PNL-F10
 DS-SF-F3
 RLY-F1

<p>SNC-LAVALIN INC. 148 Notre Dame Street Winnipeg, MB, Canada R3P 0X7 204-786-8080</p>				<p>ENGINEER'S SEAL</p>	
<p>DESIGNED BY: D. RAMJEET</p>		<p>CHECKED BY: C. REIMER</p>		<p>ORIGINAL DRAWING SEALED BY: C. J. REIMER</p>	
<p>DRAWN BY: D. RAMJEET</p>		<p>APPROVED BY: C. REIMER</p>		<p>SNC-LAVALIN INC. MEMBER #21968 2011/12/01 REV. 00</p>	
<p>SCALE: NTS</p>		<p>RELEASED FOR CONSTRUCTION</p>		<p>CITY DRAWING NUMBER 1-0142F-E0001</p>	
<p>DATE: 2009/07/23</p>		<p>BY:</p>		<p>SHEET REV. SIZE 001 00 A1</p>	
<p>ISSUED FOR CITY USE</p>		<p>2011/11/23 DR CJR</p>		<p>CONSULTANT NO.:</p>	
<p>NO. REVISIONS</p>		<p>DATE DESIGN CHECK</p>		<p>1-0142F-E0001-001-00.dwg</p>	



LEGEND:
 PPE: 4 → HAZARD/RISK CATEGORY
 29 CAL/CM² → INCIDENT ENERGY

- NOTES:
- THIS DRAWING SUPERCEDES KGS DRAWING (DOES NOT HAVE A NUMBER).
 - THIS DRAWING CONTAINS UNVERIFIED INFORMATION FROM EXISTING DOCUMENTATION.
 - THE ENGINEER'S RESPONSIBILITY IS LIMITED TO THE ARC FLASH STUDY AND RECOMMENDED MITIGATION.

- PHASE 1 REQUIRED WORK:
- A** CHANGE CB-CSTE-MAIN SETTINGS TO BE:
 LTPU: 1X (800A)
 LTD: B (6 SEC.)
 INST: 4X (3200A)
 - B** AFFIX NEW IDENTIFICATION LAMACOIDS OR LABELS TO:
 CB-CSTE MAIN
 MCP-P-F1
 MS-P-F1
 P-F1
 MCP-P-F2
 MS-P-F2
 P-F2
 MCP-P-F3
 MS-P-F3
 P-F3
 FDS-XFMR-F10
 XFMR-F10
 PNL-F10
 RLY-F1

ARC FLASH VALUES CALCULATED ARE BASED ON THE PROTECTION SETTINGS SPECIFIED IN THIS DRAWING. ALL PHASE 1 REQUIRED WORK MUST BE COMPLETED PRIOR TO APPLYING ARC FLASH LABELS.

SNC-LAVALIN INC. 148 Nature Park Way Winnipeg, MB, Canada R3P 0X7 204-786-8080		ENGINEER'S SEAL ORIGINAL DRAWING SEALED BY: C. J. REIMER SNC-LAVALIN MEMBER #21968 2011/05/09 REV. 00	THE CITY OF WINNIPEG WATER AND WASTE DEPARTMENT MISSION FLOOD PUMPING STATION ARC FLASH STUDY SINGLE LINE DIAGRAM
DESIGNED BY: D. RAMJEET DRAWN BY: D. RAMJEET SCALE: NTS DATE: 2011/05/09 CONSULTANT NO.:	CHECKED BY: C. REIMER APPROVED BY: C. REIMER RELEASED FOR CONSTRUCTION BY: C. REIMER DATE:	CITY DRAWING NUMBER 1-0163F-E0001	SHEET 001
00 ISSUED FOR CITY USE 2011/05/09 TMC CJR	DATE 2011/05/09 DESIGN TMC CHECK CJR	REV. 00	SIZE A1