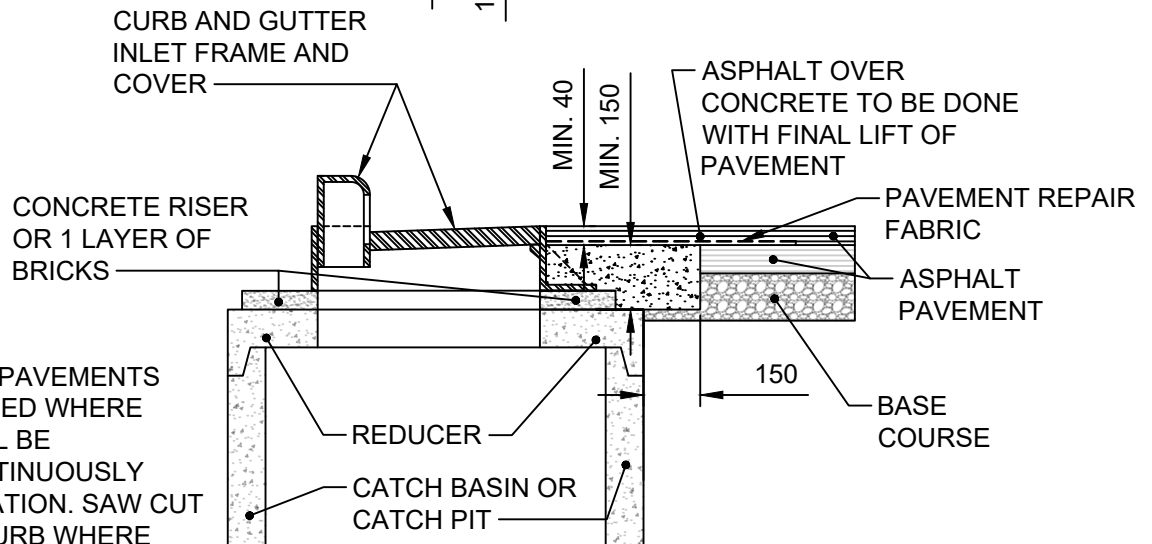
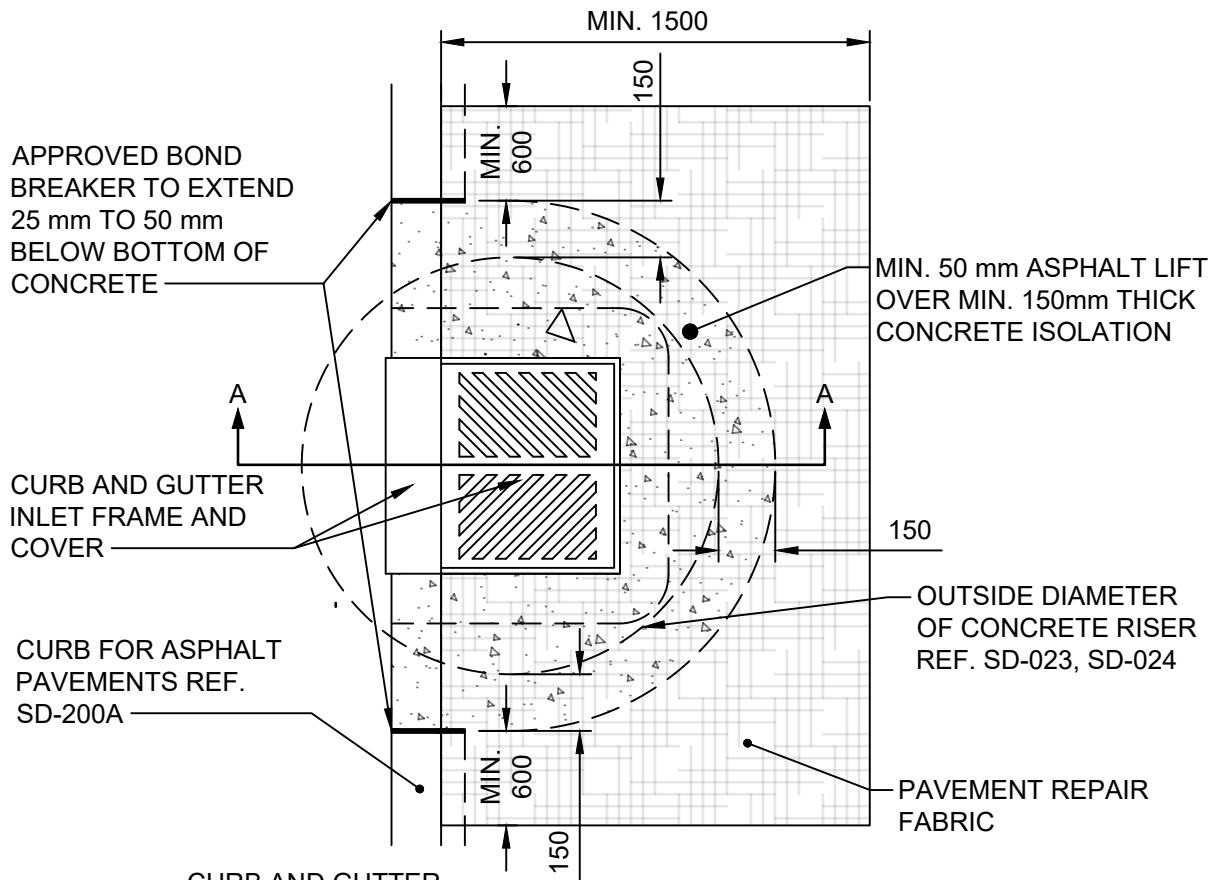


**APPENDIX 'G' – STANDARD DETAIL DRAWING FOR INLET ISOLATION FOR
ASPHALT PAVEMENTS: SD-220D**



NOTE:

CURB FOR ASPHALT PAVEMENTS SHALL BE SLIP FORMED WHERE POSSIBLE AND SHALL BE CONSTRUCTED CONTINUOUSLY THROUGH THE ISOLATION. SAW CUT AND REMOVE THE CURB WHERE ISOLATION WILL BE INSTALLED.

SECTION A-A

DIMENSIONS IN MILLIMETRES



THE CITY OF WINNIPEG
PUBLIC WORKS DEPARTMENT

Reference Spec. No.
CW 3325

Revisions

No.	Date	Description	By

INLET ISOLATION DETAIL FOR
ASPHALT PAVEMENTS

Designed By:
A.G.

Drawn By:
R.B.

Scale :
N.T.S.

Checked By:
B.K.

Date:
2023-2-16

Drawing No.
SD-220D

Approved:
PAVEMENT MANAGEMENT BRANCH

DRAFT