

- CONSTRUCTION NOTES**
- LIMIT OF RECONSTRUCTION
  - REMOVE EXISTING PAVEMENT AND CONSTRUCT NEW 125mm ASPHALT PAVEMENT AS PER TYPICAL CROSS SECTION
  - CONSTRUCT NEW 100mm CONCRETE SIDEWALK (SD-228A)
  - INSTALL NEW 1800mm CATCH BASIN WITH CURB AND GUTTER INLET FRAME (SD-024), AND CONNECT TO MANHOLE WITH 250mm Ø PVC PIPE AS PER CW 2130
  - REMOVE EXISTING APPROACH AND CONSTRUCT NEW 200mm REINFORCED CONCRETE APPROACH (SD-232)
  - CONSTRUCT MIN. 150mm CONCRETE ISOLATION AND INSTALL TYPE B PAVEMENT REPAIR FABRIC (SD-220D) (E.13)
  - INSTALL 6.0m - 150mm Ø SUB DRAINS (BOTH SIDES), CONNECT TO CATCH BASIN (SD-245) AND CAP ENDS AS PER CW 3120
  - INSTALL NEW FRAME AND SOLID COVER (AP-006, AP-007) AND ADJUST TO GRADE
  - CONSTRUCT CURB RAMP (SD-200A, SD-229C, SD-229D)
  - INSTALL DETECTABLE WARNING SURFACE TILES (SDE-229E)
  - ABANDON EXISTING CURB INLET AND EXISTING CATCH BASIN AS PER CW 2130
  - CONSTRUCT NEW MODIFIED BARRIER CURB (INTEGRAL) WITH 180mm CURB REVEAL (SD-203B)
  - INSTALL NEW FRAME & COVER AND ADJUST TO GRADE (AP-006, AP-007)
  - CONSTRUCT NEW BARRIER CURB AND REVERSE GUTTER, 180mm REVEAL, 450mm WIDTH, 150mm PLAIN CONCRETE PAVEMENT AS PER E.13

- GENERAL NOTES**
- PAVEMENT DIMENSIONS ARE TO BACK OF CURB
  - ALL CURB RADII UNDER 15.0m SHALL BE MODIFIED (SD-203B)
  - CURB REPLACEMENT AS DIRECTED BY CONTRACT ADMINISTRATOR
  - CONTRACTOR TO CONFIRM THE LOCATION OF ALL UTILITIES/SERVICES IN THE FIELD PRIOR TO CONSTRUCTION
  - ADJUST ALL EXISTING WATER VALVES AND CURB STOPS TO GRADE
  - PAVEMENT REPAIRS SHOWN ARE A REPRESENTATIVE SAMPLE OF THE TENDER QUANTITIES
  - ALL WATER SERVICES WITHIN THE LIMITS OF THE RECONSTRUCTION SHALL BE INSULATED AS PER SD-018

**ISSUED FOR TENDER**  
NOT TO BE USED FOR CONSTRUCTION

**METRIC**  
WHOLE NUMBERS INDICATE MILLIMETERS  
DECIMALIZED NUMBERS INDICATE METERS

TENDER NO. 1-2025

EXISTING	LEGEND - PLAN	PROPOSED	EXISTING	LEGEND - PLAN	PROPOSED	EXISTING	LEGEND - PROFILE	PROPOSED
⊕	HYDRANT	⊕	---	LDS/WWS	---	▨	CONCRETE	▨
⊙	VALVE	⊙	---	WATERMAIN	---	▨	CONCRETE SIDEWALK	▨
⊖	CURB STOP	⊖	---	GAS	---	▨	ASPHALT	▨
⊙	MANHOLE	⊙	---	TRAFFIC SIGNALS	---	▨	ELEVATIONS	(231.000)
⊖	CATCH BASIN	⊖	---	HYDRO/STREET LIGHT	---	▨	WATER SERVICE INSULATION	▨
△	CATCH PIT/CURB INLET	△	---	MTS/SHAW	---	▨	PAVEMENT REPAIR FABRIC	▨
⊖	HYDRO POLE	⊖	---	CURB RENEWAL	---	⊖	CHAIN LINK FENCE	⊖
⊖	LIGHT STANDARD	⊖	---	PROPERTY LINE	---	---	LEGEND - PLAN	---
⊖	TRAFFIC SIGNAL POLE	⊖	---	RAMP CURB	---	---	WEST GUTTER	---
⊕	SURVEY BAR	⊕	---	ANCHOR / GUY WIRE	---	---	CENTER LINE	---
⊕	BOLLARD	⊕	---	TREE	---	---	EAST GUTTER	---

**LOCATION APPROVED UNDERGROUND STRUCTURES**

DATE: \_\_\_\_\_

NOTE: LOCATION OF UNDERGROUND STRUCTURES AS SHOWN ARE BASED ON THE BEST INFORMATION AVAILABLE, BUT NO GUARANTEE IS GIVEN THAT ALL EXISTING UTILITIES ARE SHOWN OR THAT THE GIVEN LOCATIONS ARE EXACT. CONFIRMATION OF EXISTENCE AND EXACT LOCATION OF ALL SERVICES MUST BE OBTAINED FROM THE INDIVIDUAL UTILITIES BEFORE PROCEEDING WITH CONSTRUCTION.

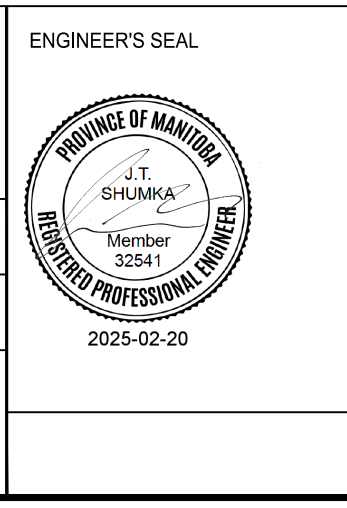
NO.	REVISIONS	DATE	BY
2.	ISSUED FOR TENDER	02/25/25	T.L.
1.	SUBMIT FOR PLAN APPROVAL	01/24/25	T.L.

B.M. IB @SW PROPERTY CORNER OF 21 AIKINS ST  
ELEV. 232.025m

**ENGINEERING DIVISION  
TECHNOLOGY SERVICES BRANCH  
106 - 1155 PACIFIC AVE**

DESIGNED BY	T.L.	CHECKED BY	J.S., E.H., R.W.
DRAWN BY	T.L.	APPROVED BY	Jason Shumka

HOR. SCALE: 1 : 250  
VERTICAL: 1 : 10  
DATE: 2025/02/20



**THE CITY OF WINNIPEG  
PUBLIC WORKS DEPARTMENT**

**AIKINS STREET**  
CONCRETE PAVEMENT RECONSTRUCTION  
FROM STA. 1+00 TO STA. 2+20

CITY DRAWING NUMBER SE-25-200  
SHEET 1 OF 9  
1