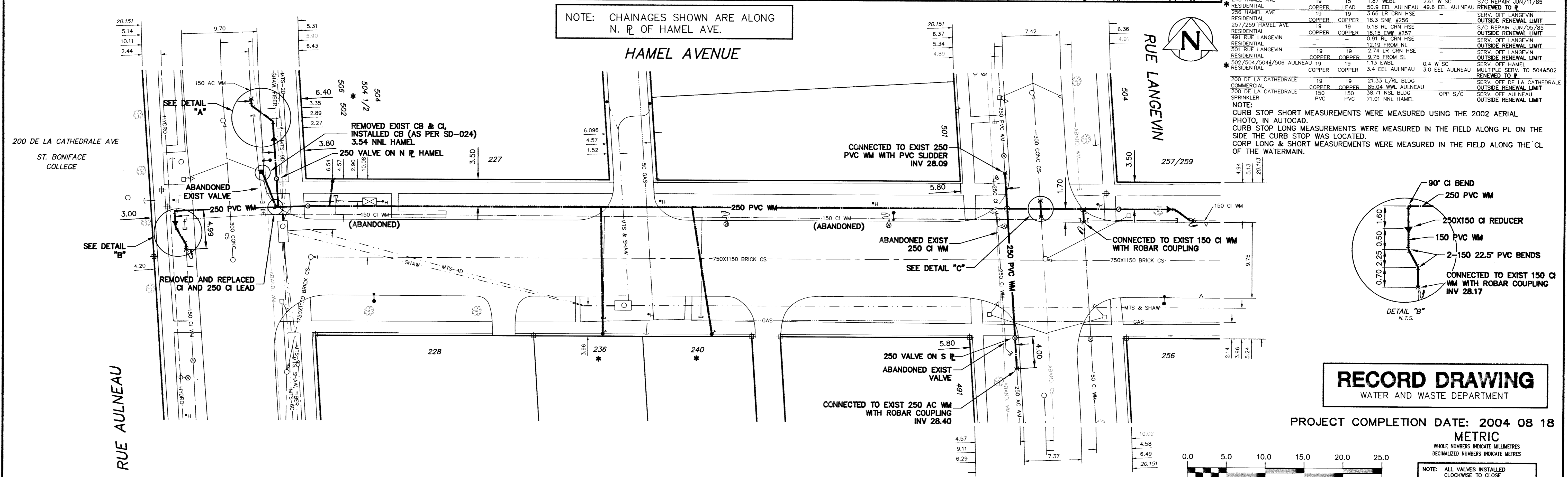
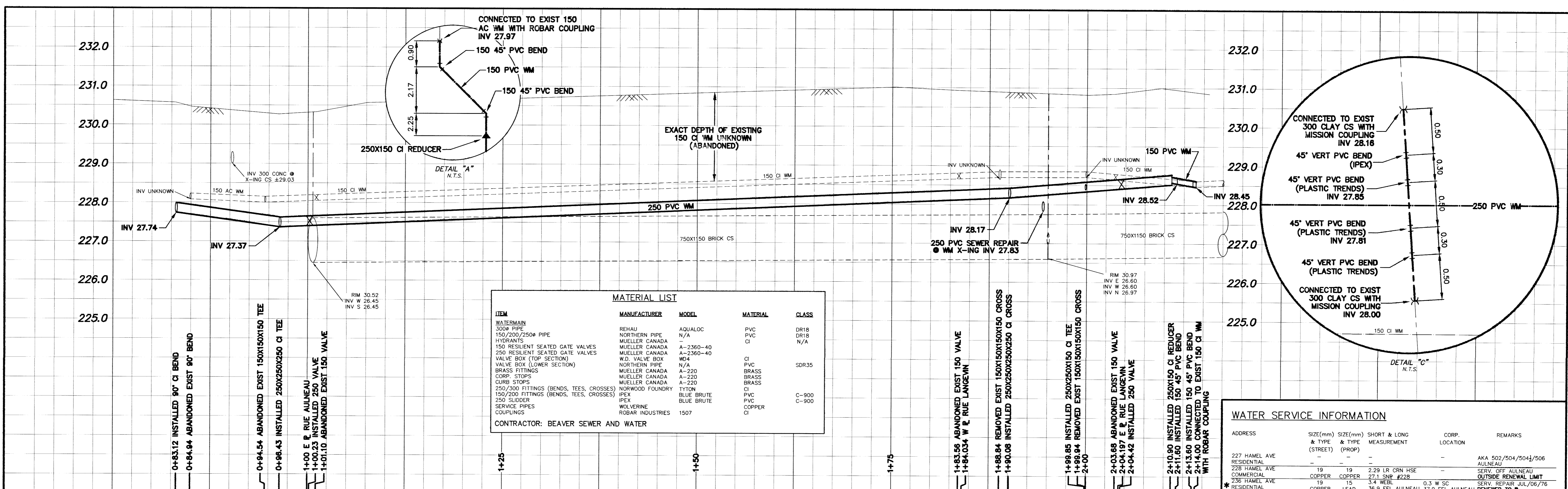


APPENDIX 'E'
RECORD DRAWINGS



200 WM	WATERMAIN	200 WM	SL, HYDRO	150 WM	WATERMAIN	150 WM
⊕	HYDRANT	⊕	MTS	⊕	HYDRANT	⊕
⊙	VALVE	⊙	TRAFFIC SIGNALS	⊙	VALVE	⊙
525 LDS	LAND DRAINAGE SEWER	525 LDS	GAS	300 LDS	LAND DRAINAGE SEWER	300 LDS
375 WWS	WASTEWATER SEWER	375 WWS	SURVEY BAR	250 WWS	WASTEWATER SEWER	250 WWS
○	MANHOLE	○	FENCE	⊖	PROFILE	⊖
□	CATCH BASIN	□	POLE - HYDRO, MTS	⊖	GROUND ABOVE PIPE	⊖
▽	CURB INLET	▽	CURB STOP			
△	REDUCER	△	GUY ANCHOR			
⊗	COUPLING	⊗	LIGHT STANDARD			
⊕	ANODE	⊕	TREE			
EXISTING	LEGEND-PLAN	PROPOSED	LEGEND-PLAN	PROPOSED	EXISTING	LEGEND-PROFILE

LOCATION APPROVED
UNDERGROUND STRUCTURES

DATE: _____

NOTE: LOCATION OF UNDERGROUND STRUCTURES AS SHOWN ARE BASED ON THE BEST INFORMATION AVAILABLE BUT NO GUARANTEE IS GIVEN THAT ALL EXISTING UTILITIES ARE SHOWN OR THAT THE GIVEN LOCATIONS ARE EXACT. CONFIRMATION OF EXISTENCE AND EXACT LOCATION OF ALL SERVICES MUST BE OBTAINED FROM THE INDIVIDUAL UTILITIES BEFORE PROCEEDING WITH CONSTRUCTION.

B.M. ELEV.	FIELD BOOK #

CITY OF WINNIPEG
WATER AND WASTE
ENGINEERING DIVISION

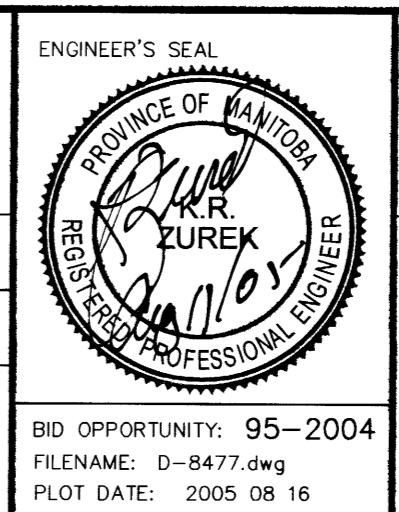
DESIGNED BY: DS/CJH
CHECKED BY: TW

DRAWN BY: CJH
APPROVED BY: KZ

HOR. SCALE: 1:250
VERTICAL: 1:50

RELEASED FOR CONSTRUCTION

DATE: 2004.03.19



THE CITY OF WINNIPEG
WATER AND WASTE DEPARTMENT

2004 WATERMAIN RENEWALS

HAMEL AVENUE
RUE AULNEAU TO
RUE LANGEVIN

SHEET 5 OF 10
CITY DRAWING NUMBER: D-8477

PROJECT COMPLETION DATE: 2004 08 18
METRIC
WHOLE NUMBERS INDICATE MILLIMETRES
DECIMALIZED NUMBERS INDICATE METRES

NOTE: ALL VALVES INSTALLED CLOCKWISE TO CLOSE

WATER SERVICE INFORMATION

ADDRESS	SIZE(mm) & TYPE	SIZE(mm) & TYPE	SHORT & LONG MEASUREMENT	CORP. LOCATION	REMARKS
227 HAMEL AVE	19	19	2.29 LR CRN HSE	AKA 502/504/504/506	
228 HAMEL AVE	19	19	27.1 SNR #228		SERV. OFF AULNEAU OUTSIDE RENEWAL LIMIT
236 HAMEL AVE	19	15	3.4 WEBL	0.3 W SC	SERV. REPAIR JUL/06/76 RENEWED TO #
240 HAMEL AVE	19	15	1.87 WEBL	2.61 W SC	S/C REPAIR JUN/11/85 RENEWED TO #
256 HAMEL AVE	19	19	3.66 LR CRN HSE		SERV. OFF LANGEVIN OUTSIDE RENEWAL LIMIT
257/259 HAMEL AVE	19	19	5.18 LR CRN HSE		S/C REPAIR JUN/05/85 OUTSIDE RENEWAL LIMIT
491 RUE LANGEVIN	19	19	16.15 EMP #257		SERV. OFF LANGEVIN OUTSIDE RENEWAL LIMIT
501 RUE LANGEVIN	19	19	0.91 LR CRN HSE		SERV. OFF LANGEVIN OUTSIDE RENEWAL LIMIT
502/504/504/506 AULNEAU	19	19	12.19 FROM NL		SERV. OFF HAMEL OUTSIDE RENEWAL LIMIT
200 DE LA CATHEDRALE	19	19	1.13 EMBE	0.4 W SC	SERV. OFF HAMEL MULTIPLE SERV. TO 504&502 RENEWED TO #
200 DE LA CATHEDRALE	19	19	21.33 L/R BLDG		SERV. OFF DE LA CATHEDRALE OUTSIDE RENEWAL LIMIT
200 DE LA CATHEDRALE	150	150	85.04 WWL AULNEAU		OPP S/C SERV. OFF AULNEAU OUTSIDE RENEWAL LIMIT
	150	150	38.71 NSL BLDG		
	PVC	PVC	71.01 NNL HAMEL		

NOTE: CURB STOP SHORT MEASUREMENTS WERE MEASURED USING THE 2002 AERIAL PHOTO, IN AUTOCAD.
CURB STOP LONG MEASUREMENTS WERE MEASURED IN THE FIELD ALONG PL ON THE SIDE OF THE CURB STOP WAS LOCATED.
CORP LONG & SHORT MEASUREMENTS WERE MEASURED IN THE FIELD ALONG THE CL OF THE WATERMAIN.

RECORD DRAWING
WATER AND WASTE DEPARTMENT

PROJECT COMPLETION DATE: 2004 08 18

METRIC
WHOLE NUMBERS INDICATE MILLIMETRES
DECIMALIZED NUMBERS INDICATE METRES

NOTE: ALL VALVES INSTALLED CLOCKWISE TO CLOSE