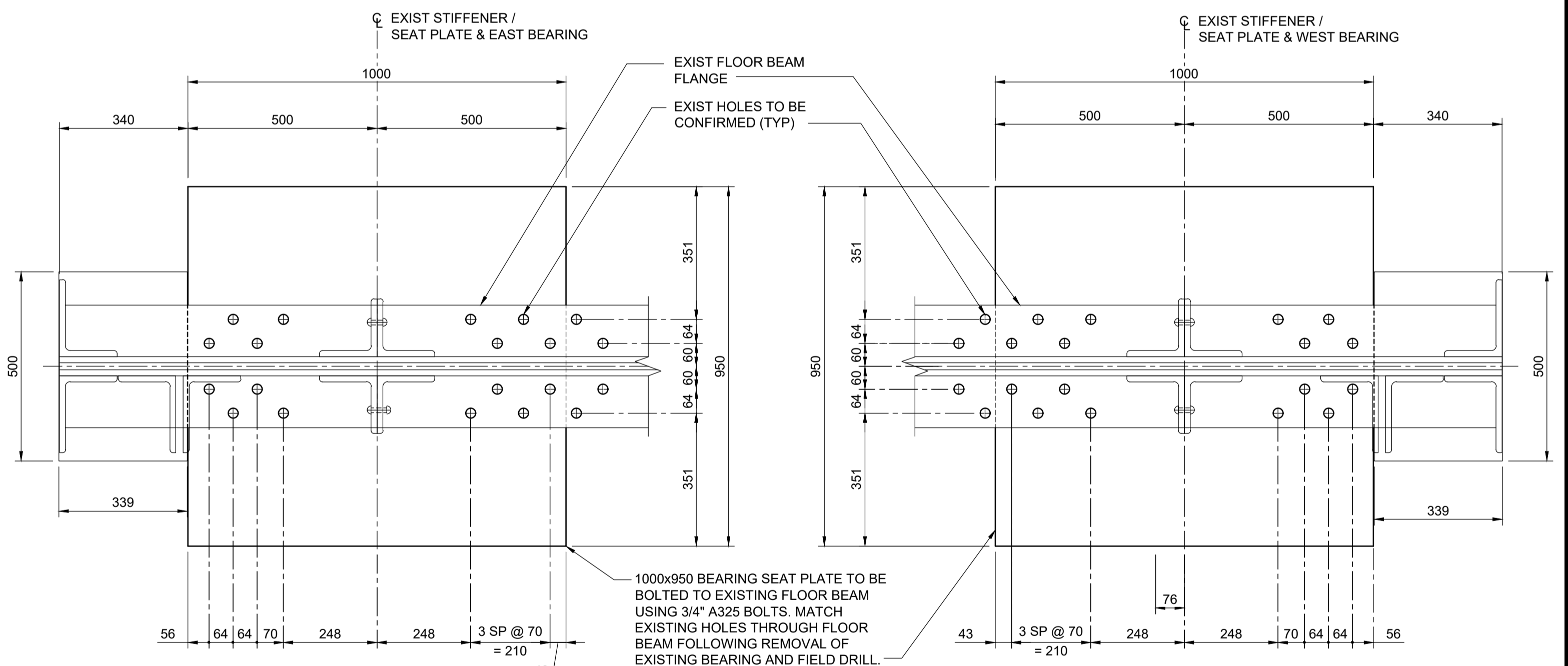
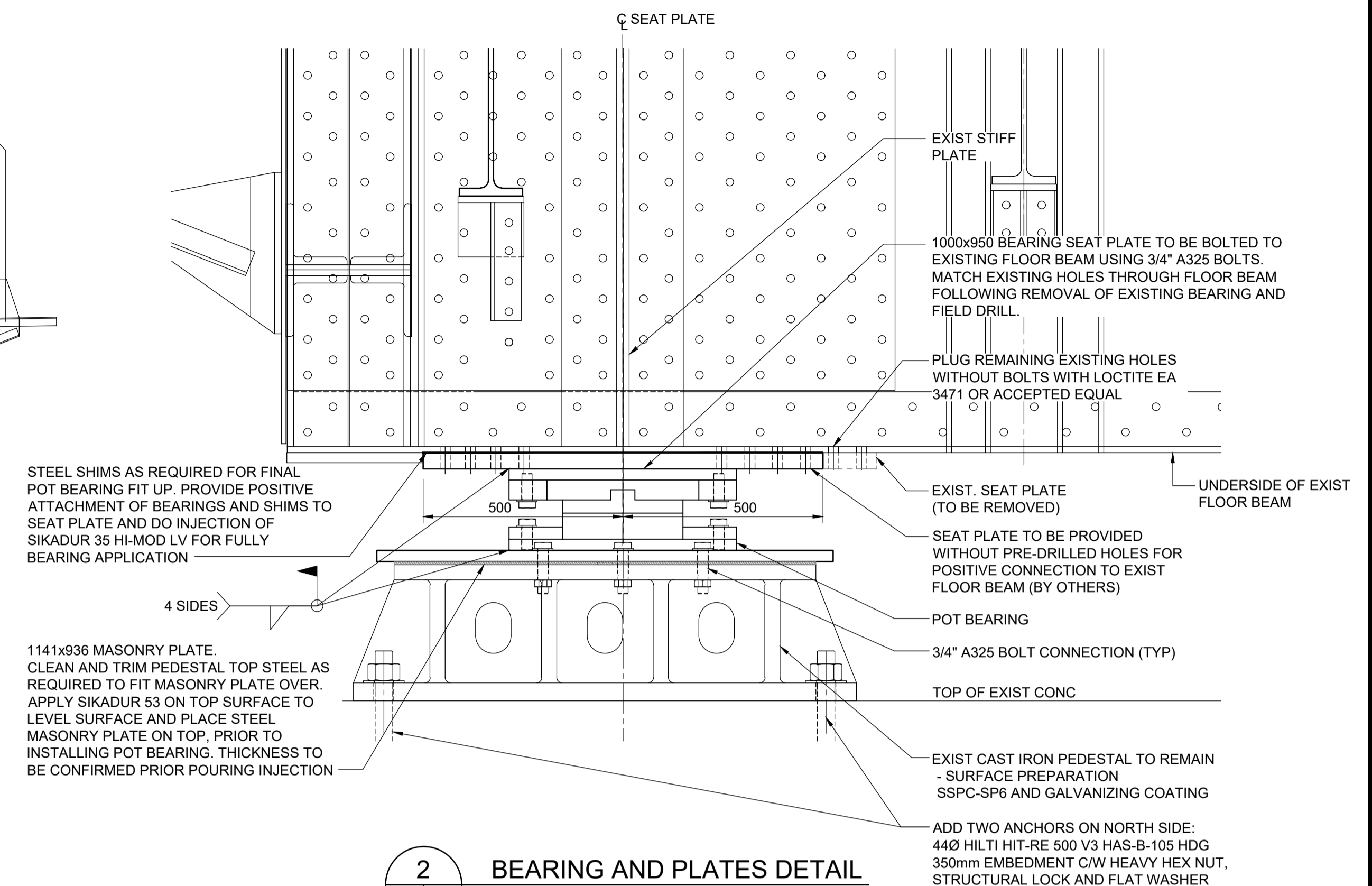
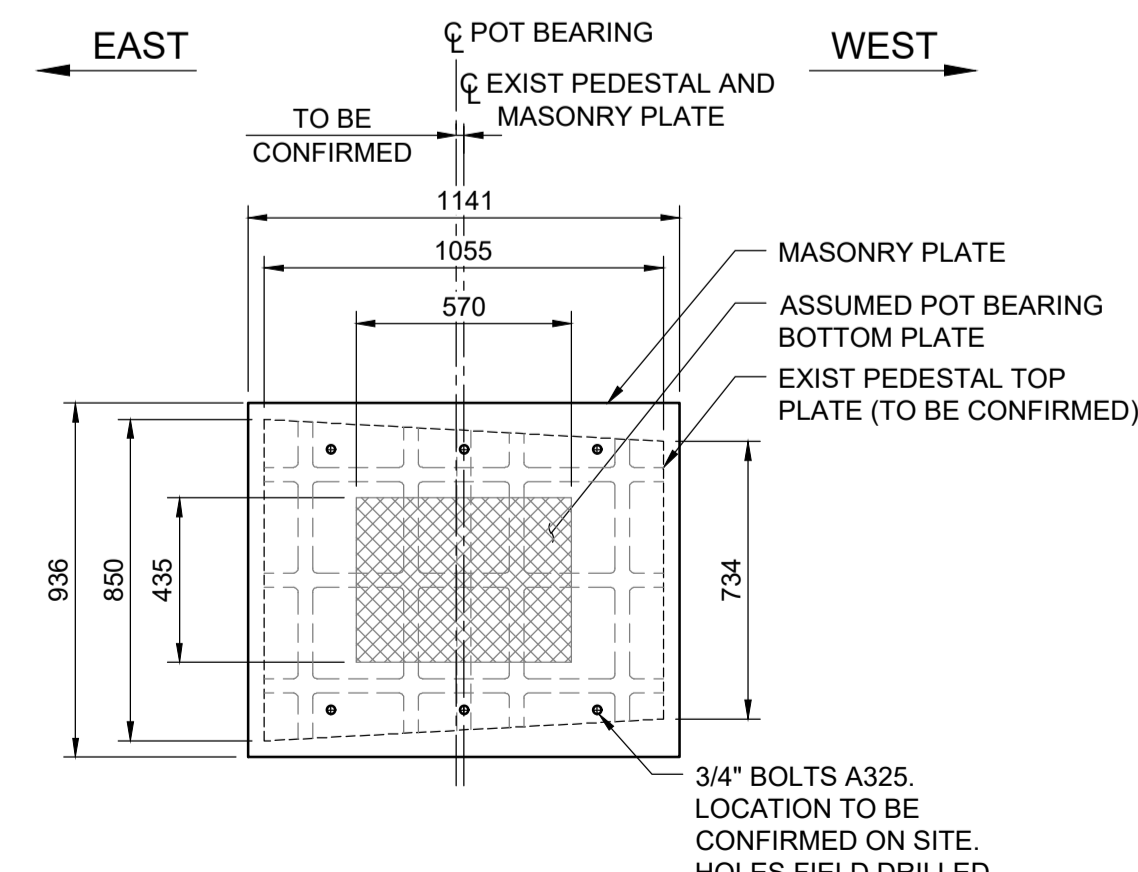
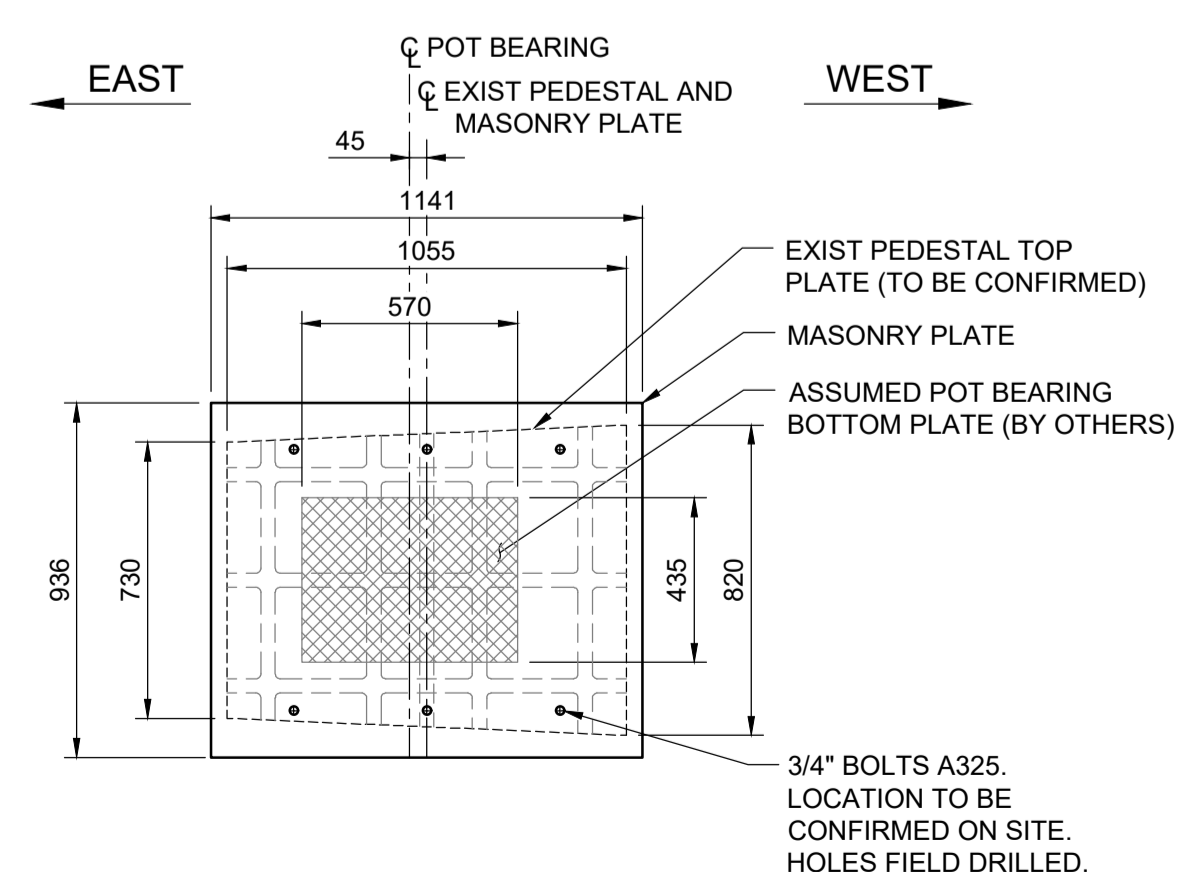
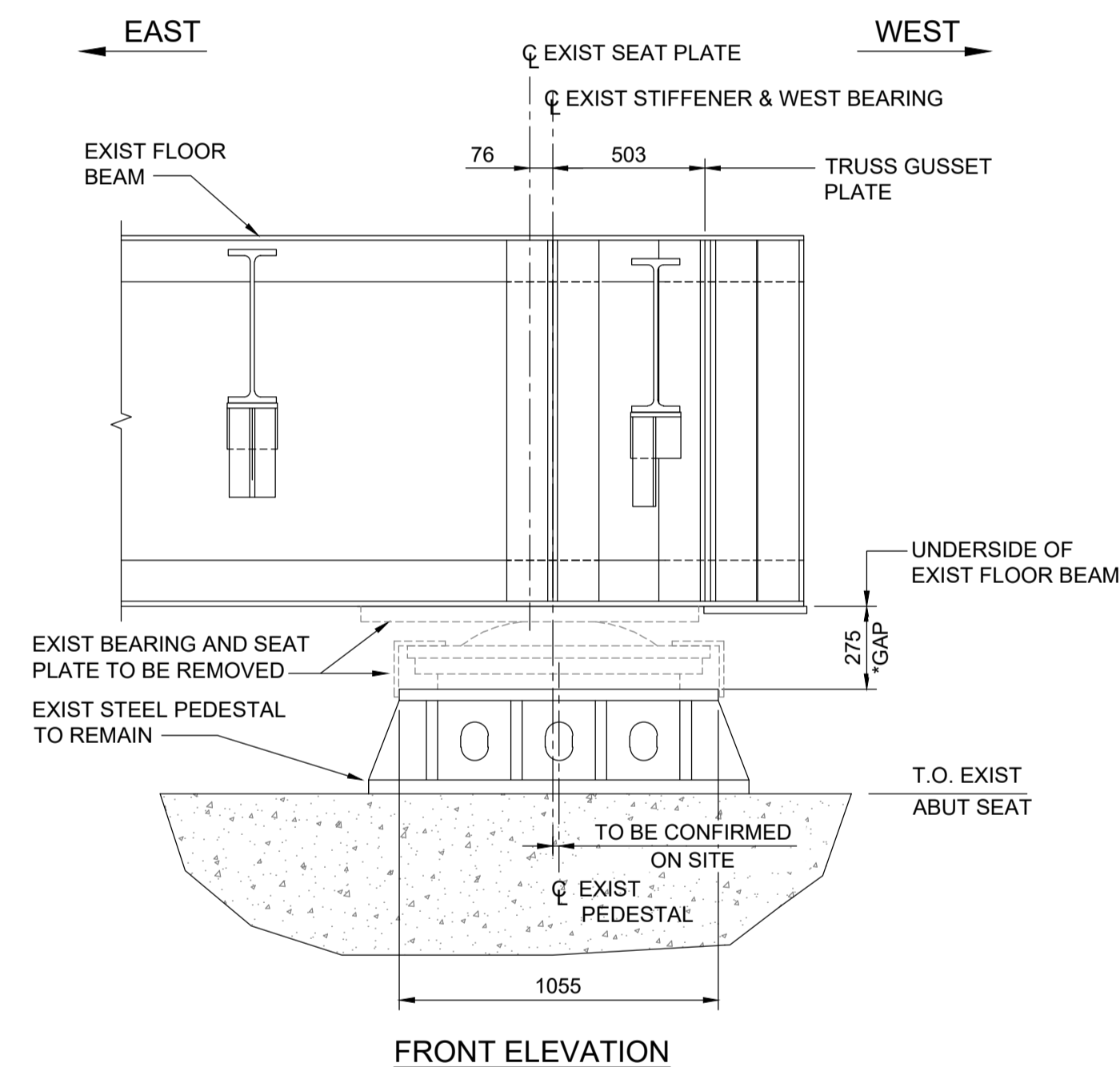
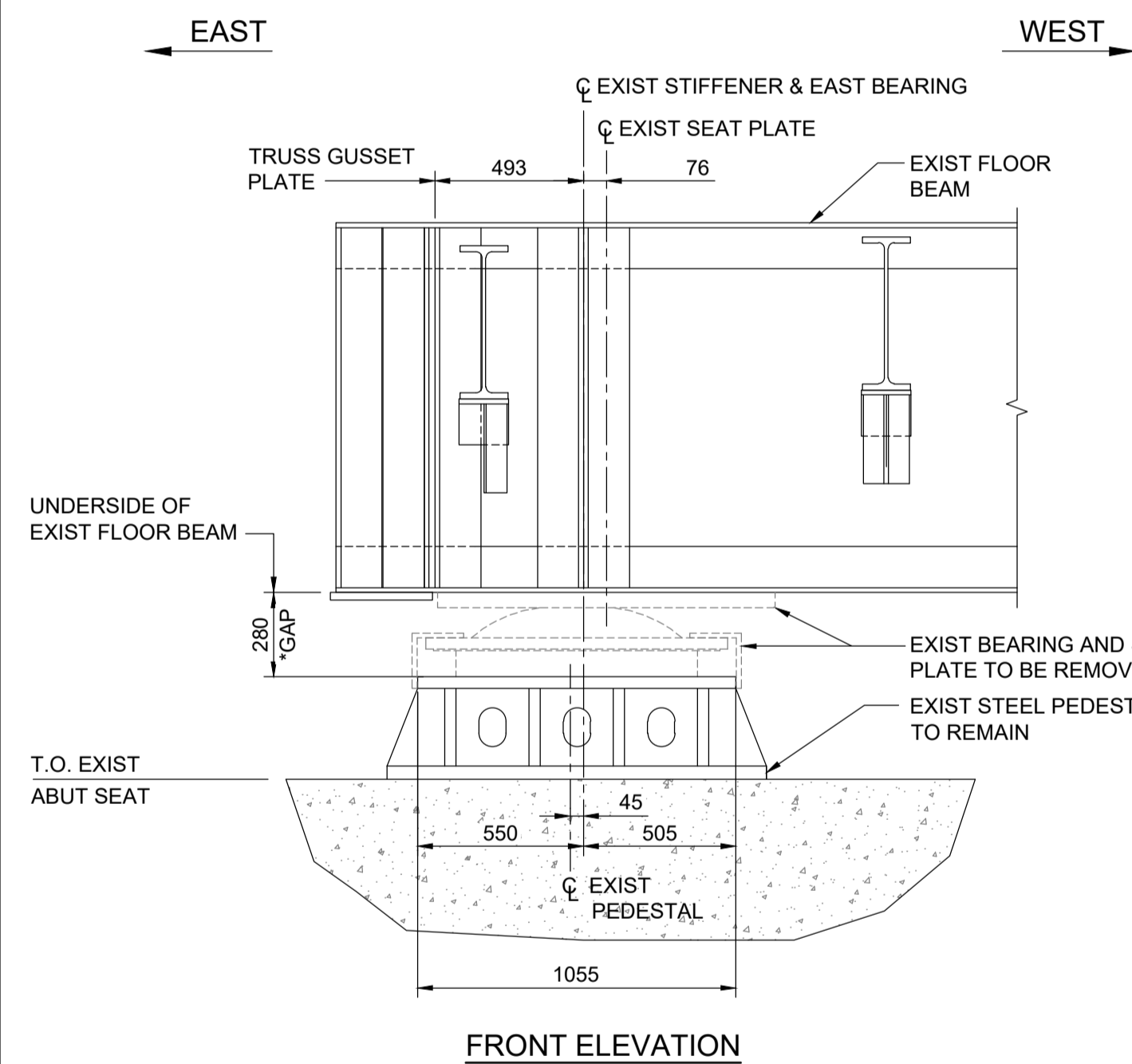


NOTE:
* GAP BETWEEN PEDESTAL AND FLOOR BEAM MUST REMAIN UNCHANGED AFTER BEARING REPLACEMENT



**ENGINEERS
GEOSCIENTISTS
MANITOBA**
Certificate of Authorization
Tetra Tech Canada Inc.
No. 6499

B.M. ELEV.			
0	ISSUED FOR TENDER	25.11.14	ZM
NO.	REVISIONS	DATE	BY
		25.11.14	

TETRA TECH			
DESIGNED BY	ZM	REVIEWED BY	TN / SA
DRAWN BY	BM / GI / AM	APPROVED BY	MB
SCALE:	AS NOTED	ACCEPTED BY	DATE
		CAM WARD, P.ENG.	25.11.14

CONSULTANT DRAWING NO.	704-INF-MB103029.01-DWG-S1007
------------------------	-------------------------------

THE CITY OF WINNIPEG PUBLIC WORKS DEPARTMENT	
LOUISE BRIDGE SUBSTRUCTURE REHABILITATION WORKS - PHASE 1	CITY DRAWING NUMBER B107-25-007 SHEET 7 OF 23
SU.1 BEARING REPLACEMENT DETAILS	
7	