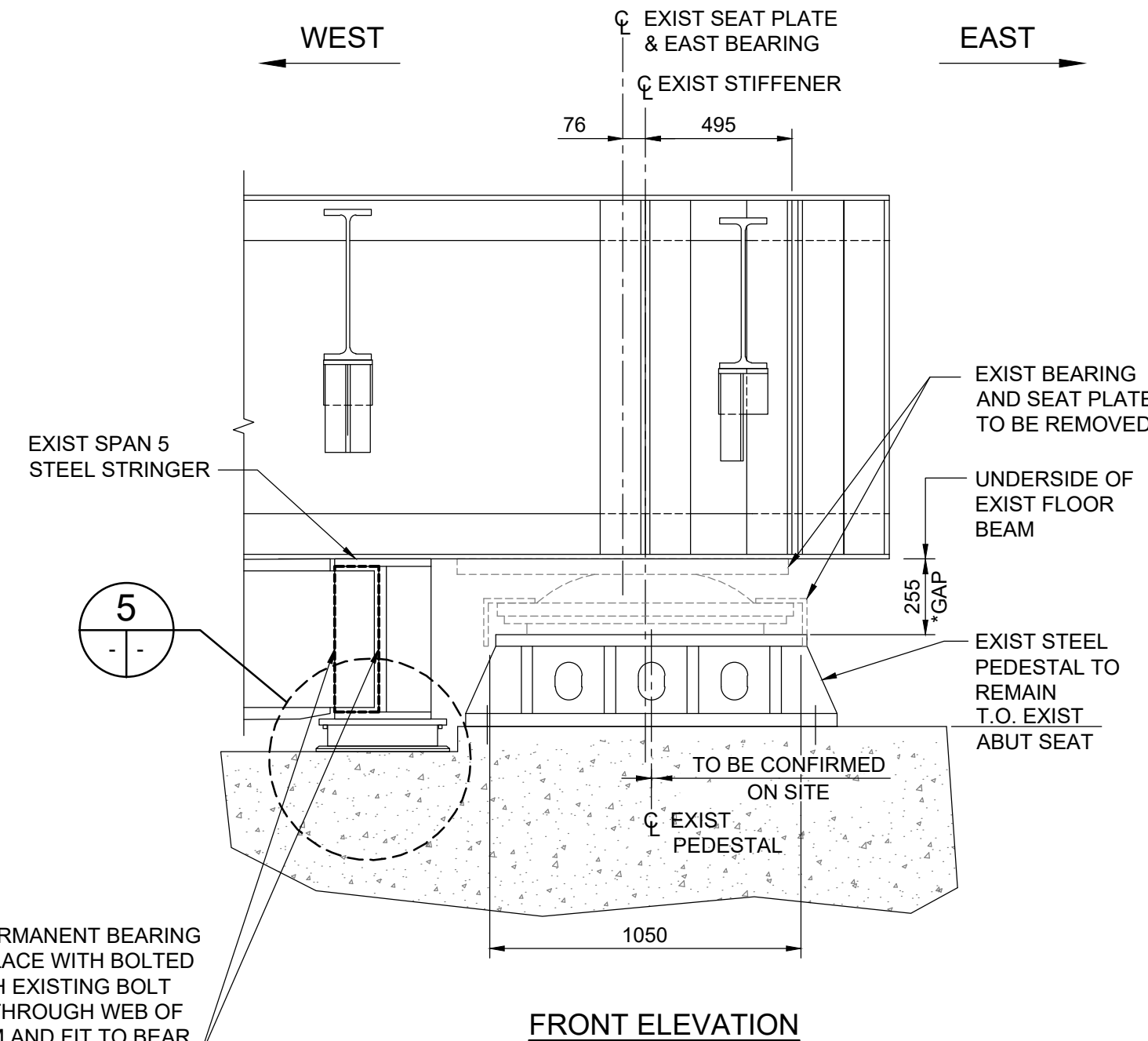
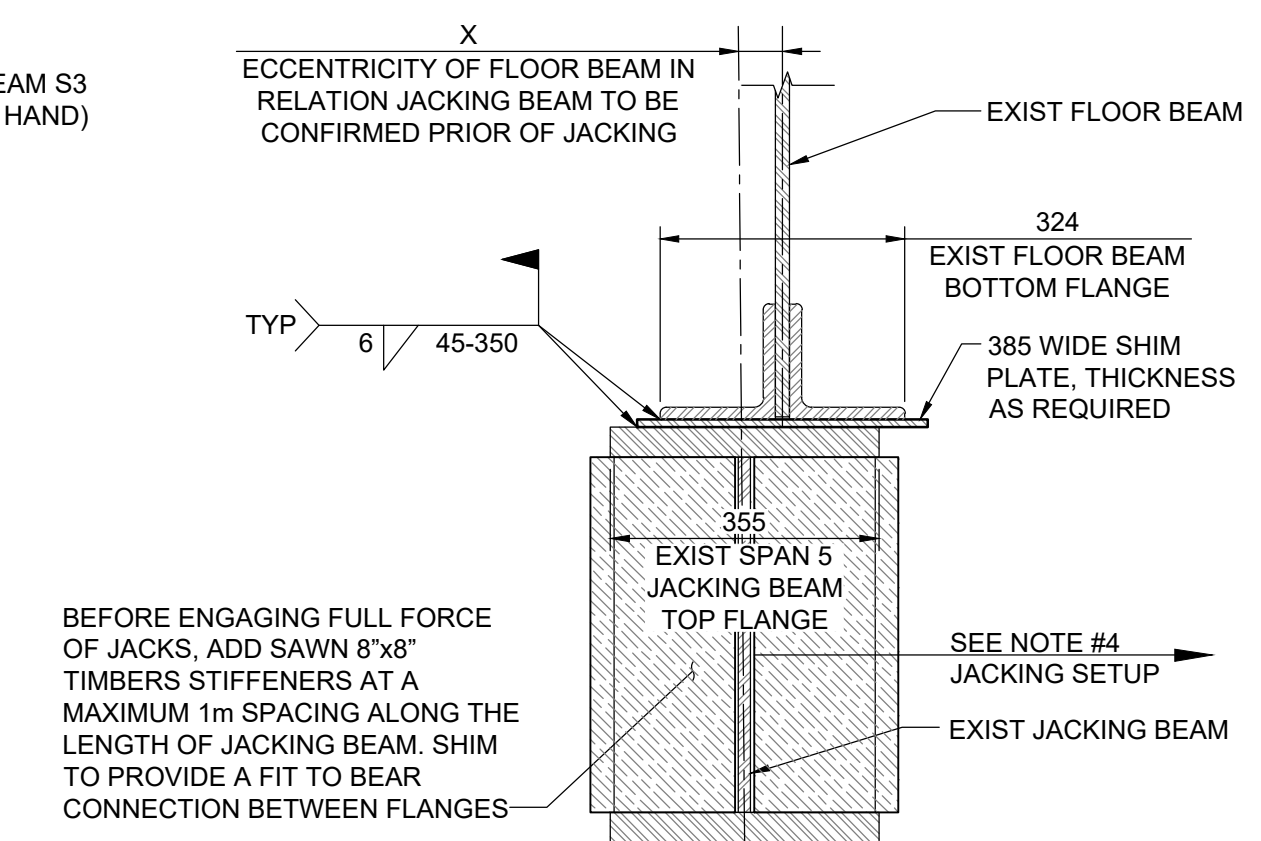


2 BEARING AND PLATES DETAIL  
1 : 10



3 SU.5 - EXISTING WEST BEARING  
1 : 20  
- EXISTING RIVETS NOT SHOWN FOR CLARITY

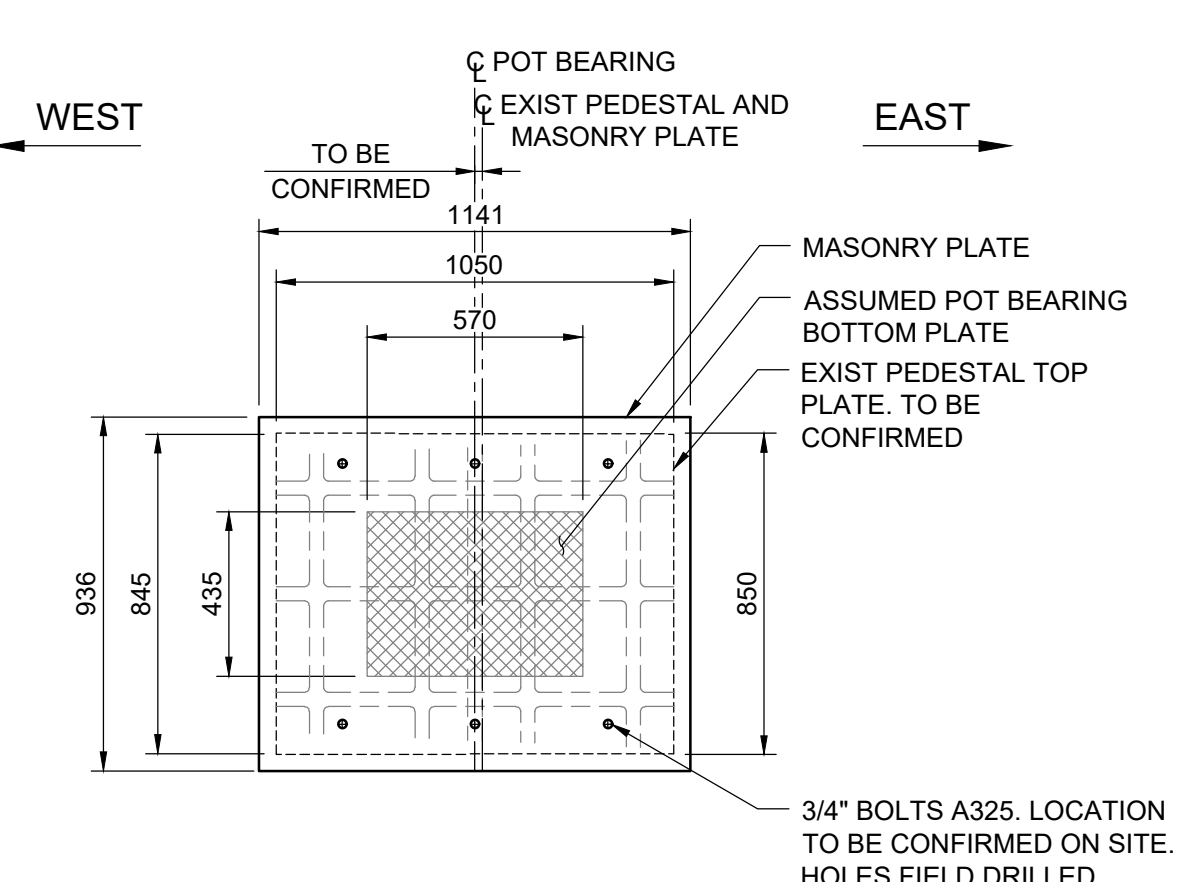
4 SU.5 - EXISTING EAST BEARING  
1 : 20  
- EXISTING RIVETS NOT SHOWN FOR CLARITY



5 DETAIL OF SU.5 END STRINGERS  
1:10

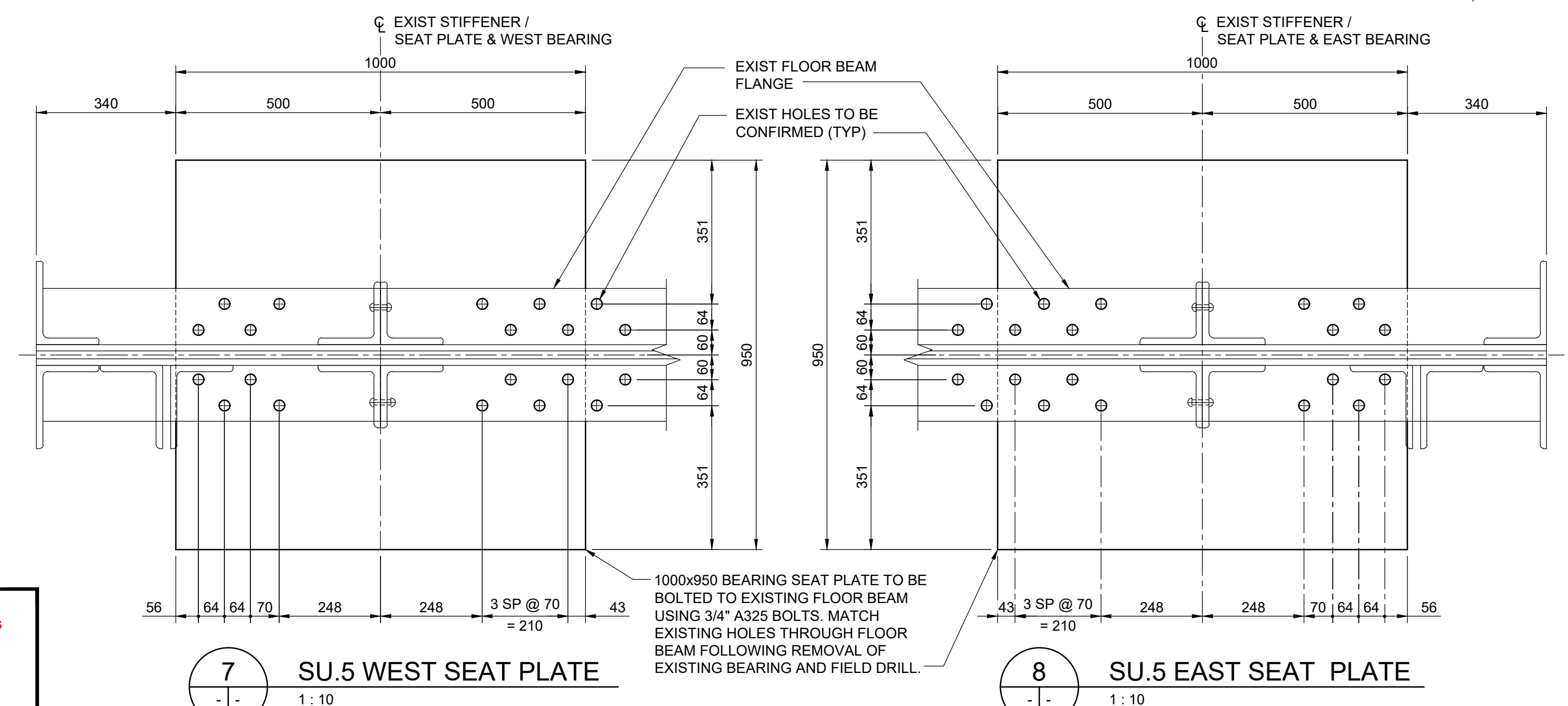
SECTION - TEMPORARY  
CONNECTION DETAIL

- ## JACKING SETUP NOTES:
1. PLACE JACKS BELOW EXISTING JACKING BEAM AND ENGAGE THEM FOR SUPPORT.
  2. RELEASE/REMOVE BOLTS AT CONNECTION BETWEEN JACKING BEAM AND EXISTING STRINGER INCLUDING SINGLE ANGLE CONNECTION FOR S3/S4.
  3. REMOVE EXPANSION JOINT SEAL (IF REQUIRED) BETWEEN SPAN 4 AND SPAN 5.
  4. JACKING BEAM NEEDS TO BE POSITION IN CL OF EXISTING FLOOR BEAM PRIOR TO JACKING AND RETURNED TO EXISTING POSITION WITH ADDITIONAL SINGLE ANGLE AT THE NORTH SIDE AND SAME CONNECTION DETAIL FROM SOUTH SIDE.
  5. LEVEL JACKING BEAM TO BE EQUAL OFFSET WITH EXISTING END BEAM FOR SHIMMING.
  6. SHIM BETWEEN EXISTING JACKING BEAM AND EXISTING END BEAM
  7. USE TEMPORARY CONNECTION DETAIL BETWEEN EXISTING JACKING BEAM AND EXISTING END BEAM.
  8. USE REVERSE PROCEDURE FOR LEVELING DOWN ALL STRUCTURE AND REMOVE TEMPORARY CONNECTION.
  9. FOR JACKING LOADS, SEE SHEET 6.



9 SU.5 WEST MASONRY PLATE DETAIL  
- - 1 : 20

10 SU.5 EAST MASONRY PLATE DETAIL  
1 : 20




7 SU.5 WEST SEAT PLATE  
- - 1 : 10


8 SU.5 EAST SEAT PLATE  
1:10



B.M. ELEV.			
0	ISSUED FOR TENDER	25.11.14	ZM
NO	REVISIONS	DATE	BY

 <b>TETRA TECH</b>	
DESIGNED BY	ZM  REVIEWED BY
DRAWN BY	TM / SA  APPROVED BY
SCALE:	MB  ACCEPTED BY
DATE	DATE CAM WARD, P.ENG. 25.11.14
25.11.14	

[illegible]

 <div style="text-align: center;"> <h1 style="margin: 0;">THE CITY OF WINNIPEG</h1> <h2 style="margin: 0;">PUBLIC WORKS DEPARTMENT</h2> </div>	
LOUISE BRIDGE SUBSTRUCTURE REHABILITATION WORKS - PHASE 1	CITY DRAWING NUMBER <div style="text-align: center; font-size: 1.2em;">B107-25-008</div>
	<div style="display: flex; justify-content: space-between;"> <span>SHEET</span> <span>8</span> <span>OF</span> <span>23</span> </div>
SU.5 BEARING REPLACEMENT DETAILS	8