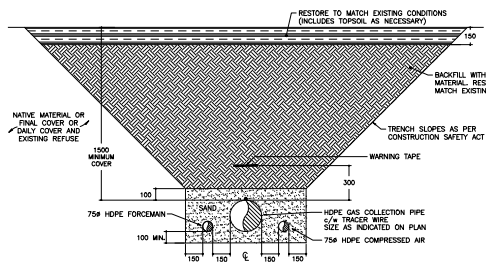
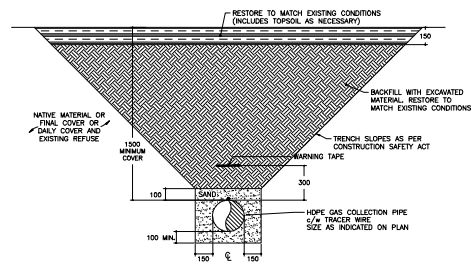


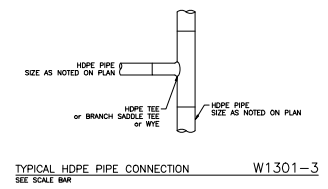
January 27, 2025 12:23 PM



EXISTING THREE (3) PIPE TRENCH DETAIL W1301-1
SEE SCALE BAR

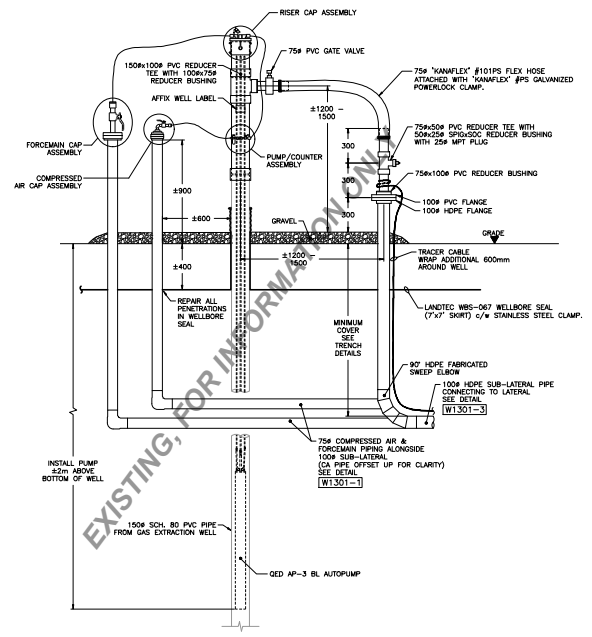


NEW ONE (1) PIPE TRENCH DETAIL W1301-2
SEE SCALE BAR



TYPICAL HDPE PIPE CONNECTION W1301-3
SEE SCALE BAR

TRENCH DETAIL NOTES:
 1. THE CONTRACTOR IS RESPONSIBLE FOR THE REPAIR OF ANY EXISTING SUBSURFACE PIPING DAMAGED, INCLUDING WARNING TAPE, TRACER WIRE AND PIPES REMOVED, DURING THE INSTALLATION OF NEW PIPES.
 2. WHERE ENCOUNTERED, RE-COMPACT CLAY COVER TO 85% S.P.D.
 3. SAND PIPE BEDDING EXCEPT AT ALL ROAD CROSSINGS WHERE PIPE BEDDING TO BE UNSHRINKABLE FILL. FILL TO EXTEND 2M PAST ROAD EDGES.



EXISTING DUAL-PURPOSE LANDFILL GAS EXTRACTION WELL VALVE AND MONITORING PORT ASSEMBLY W1301-4
SEE SCALE BAR

NO.	REVISION	DATE	DES.	DWN.	CHK.
1	ISSUED FOR REVIEW	Nov. 7, 2024	JDP	JDP	LB
2	ISSUED FOR TENDER	Nov. 20, 2024	JDP	JDP	LB
3	RE-ISSUED FOR TENDER	Jan. 27, 2025	JDP	JDP	LB

APEGN
 Certificate of Authorization
 Comcor Environmental Limited
 No. 4454 Date: Jan. 27 2025

PROFESSIONAL ENGINEER
 J.D. RETSCH
 Member 49106
 Jan. 27/25

NOTES:
 1. ALL DIMENSIONS ARE IN MILLIMETRES UNLESS NOTED OTHERWISE.
 2. ALL PIPE SIZES ARE IPS UNLESS NOTED OTHERWISE.
 3. ALL HDPE GAS COLLECTION PIPING IS DR11.
 4. ALL HDPE COMPRESSED AIR PIPING & FORCE MAIN PIPING IS DR11.
 5. ALL PVC PIPING IS SCHEDULE 80.
 6. PROVIDE SHOP DRAWINGS FOR APPROVAL OF THE ENGINEER PRIOR TO FABRICATION OR CONSTRUCTION.

COMCOR
 ENVIRONMENTAL LIMITED
 Consulting Engineers and Landfill Gas Specialists
 320 Pinebush Road, Suite 12, Cambridge, Ontario N1T 1Z6
 tel (519) 621-6669 • fax (519) 621-9944

City of Winnipeg
 Brady Road
 Resource Management
 Facility

2025 BRADY ROAD LANDFILL GAS SYSTEM REPAIRS - LATERAL 5
 CITY DWG NO. 1-0400L-C0004-001 COMCOR DWG NO. W1301
 TRENCH & SYSTEM DETAILS

Z:\ACAD\DWG\CAD 2016\DWG - 2025\2025 Landfill Expansion\06 - W1301\DWG\W1301-4.dwg - 486.1 - W1301-4.dwg