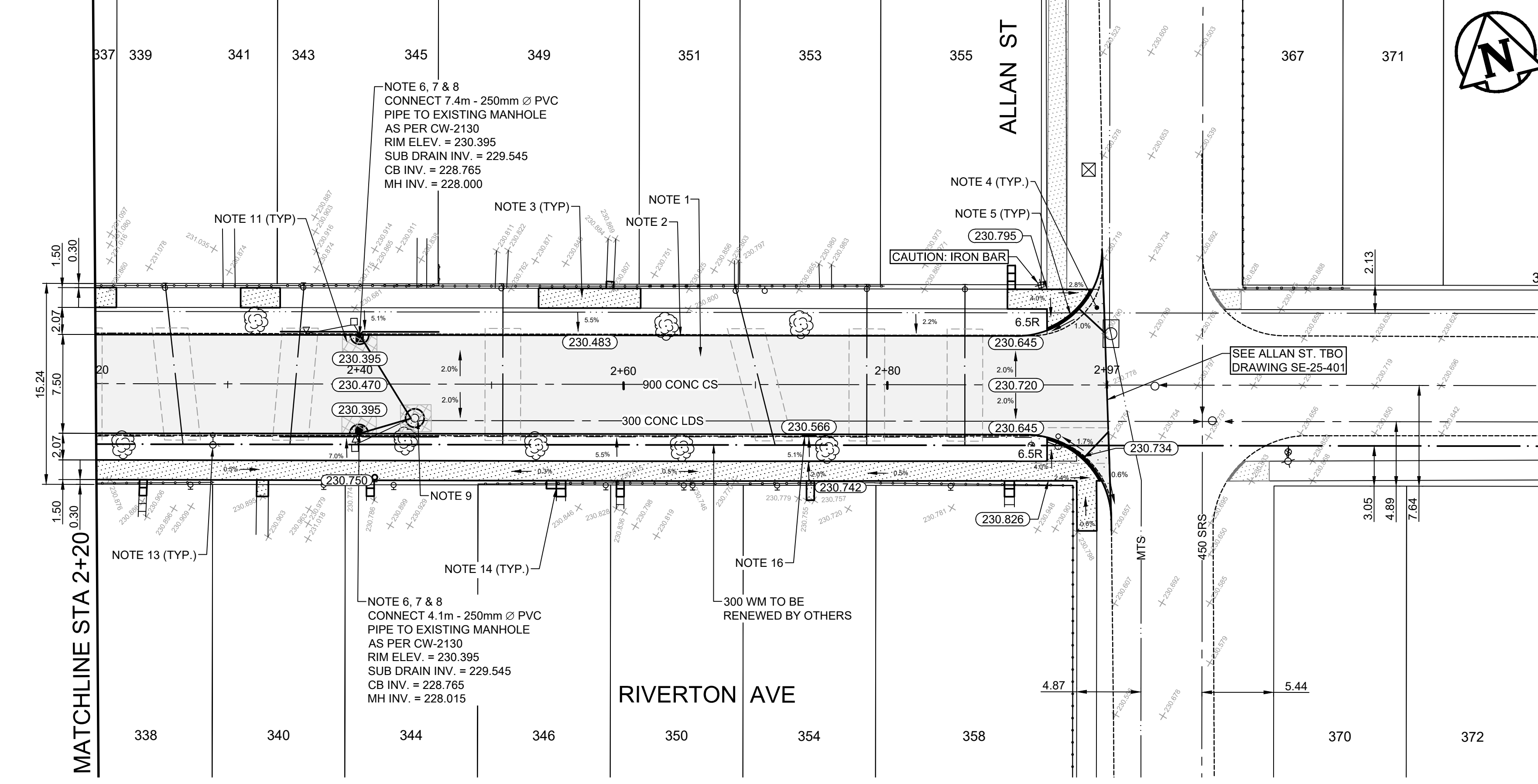


- NOTES:**
- REFER TO SPECIFICATION E# BARRIER CURB AND REVERSED GUTTER FOR ASPHALT PAVEMENT OF THE TENDER DOCUMENT
 - TRANSVERSE JOINT SAW CUT EVERY 3.0m TO A MAXIMUM DEPTH OF 25mm



- CONSTRUCTION NOTES**
- REMOVE EXISTING PAVEMENT AND CONSTRUCT NEW 110mm ASPHALT PAVEMENT AS PER TYPICAL CROSS SECTION
 - CONSTRUCT NEW CONCRETE CURB FOR ASPHALT PAVEMENT (SD-200AA, E19)
 - RENEW EXISTING CONCRETE SIDEWALK (SD-228A)
 - REMOVE EXISTING PAVEMENT AND CONSTRUCT 150mm REINFORCED CONCRETE PAVEMENT WITH MODIFIED BARRIER CURB
 - CONSTRUCT NEW CURB RAMP (SD-229F, E19)
 - ABANDON EXISTING CATCH BASIN & EXISTING CB LEAD AS PER CW2130
 - INSTALL NEW 1800 CATCH BASIN WITH CURB AND GUTTER INLET FRAME (SD-024, E24), AND CONNECT TO SEWER WITH 250mm Ø PVC PIPE AS PER CW 2130
 - INSTALL 6.0m - 150mm Ø SUB DRAINS (BOTH SIDES), CONNECT TO CATCH BASIN (SD-245, E25) AND CAP ENDS AS PER CW 3120
 - INSTALL NEW FRAME AND SOLID COVER (AP-006, AP-007) AND ADJUST TO GRADE
 - LIMIT OF RECONSTRUCTION
 - CONSTRUCT MIN. 150mm CONCRETE ISOLATION AND INSTALL TYPE B PAVEMENT REPAIR FABRIC (SD-220D, E11)
 - REMOVE EXISTING APPROACH AND CONSTRUCT NEW 150mm REINFORCED CONCRETE APPROACH WITH LIP CURB FOR ASPHALT PAVEMENT (SD-252)
 - LIGHT STANDARD TO BE RELOCATED BY OTHERS
 - RE-GRADE EXISTING PRECAST SIDEWALK BLOCKS
 - RE-GRADE EXISTING PAVING STONES
 - CONSTRUCT 1.0m CURB CUT WITH 25mm CURB REVEAL

- GENERAL NOTES**
- PAVEMENT DIMENSIONS ARE TO BACK OF CURB
 - ALL CURB RADII UNDER 15.0m SHALL BE MODIFIED (SD-203C, E19)
 - CURB REPLACEMENT AS DIRECTED BY CONTRACT ADMINISTRATOR
 - CONTRACTOR TO CONFIRM THE LOCATION OF ALL UTILITIES/SERVICES IN THE FIELD PRIOR TO CONSTRUCTION
 - ADJUST ALL EXISTING WATER VALVES AND CURB STOPS TO GRADE
 - PAVEMENT REPAIRS SHOWN ARE A REPRESENTATIVE SAMPLE OF THE TENDER QUANTITIES
 - ALL WATER SERVICES WITHIN THE LIMITS OF THE RECONSTRUCTION SHALL BE INSULATED AS PER SD-018

ISSUED FOR TENDER
NOT TO BE USED FOR CONSTRUCTION

METRIC
WHOLE NUMBERS INDICATE MILLIMETERS
DECIMALIZED NUMBERS INDICATE METERS
TENDER NO. 11-2025

EXISTING	LEGEND - PLAN	PROPOSED	EXISTING	LEGEND - PLAN	PROPOSED	EXISTING	LEGEND - PROFILE	PROPOSED
⊕	HYDRANT	⬆	---	LDS/WWS	---	▒	CONCRETE	▒
⊗	VALVE	⬆	---	WATERMAIN	---	▒	CONCRETE SIDEWALK	▒
⊙	CURB STOP	⬆	---	GAS	---	▒	ASPHALT	▒
⊚	MANHOLE	⬆	---	TRAFFIC SIGNALS	---	▒	PAVEMENT REPAIR FABRIC	▒
⊠	CATCH BASIN	⬆	---	HYDRO/STREET LIGHT	---	▒	WATER SERVICE INSULATION	▒
△	CATCH PIT/CURB INLET	⬆	---	MTS/SHAW	---	▒	PAVING STONES	▒
⊙	HYDRO POLE	⬆	---	CURB RENEWAL	---	---	NORTH GUTTER	---
⊙	LIGHT STANDARD	⬆	---	PROPERTY LINE	---	---	CENTER LINE	---
⊙	TRAFFIC SIGNAL POLE	⬆	---	RAMP CURB	---	---	SOUTH GUTTER	---
⊕	SURVEY BAR	⬆	---	ELEVATIONS	(231.000)	---		
⊕	GEODETIC BENCH MARK	⬆	---	TREE	---	---		

LOCATION APPROVED	DATE	COMMITTEE
IB NW CORNER RIVERTON & ALLAN	230.795	

NOTE:
LOCATION OF UNDERGROUND STRUCTURES AS SHOWN ARE BASED ON THE BEST INFORMATION AVAILABLE. BUT NO GUARANTEE IS GIVEN THAT ALL EXISTING UTILITIES ARE SHOWN OR THAT THE GIVEN LOCATIONS ARE EXACT. CONFIRMATION OF EXISTENCE AND EXACT LOCATION OF ALL SERVICES MUST BE OBTAINED FROM THE INDIVIDUAL UTILITIES BEFORE PROCEEDING WITH CONSTRUCTION.

NO.	REVISIONS	DATE	BY
2.	ISSUED FOR TENDER	25/03/07	V.S.
1.	SUBMIT FOR PLAN APPROVAL	25/02/10	C.W.

ENGINEERING DIVISION
TECHNOLOGY SERVICES BRANCH
106 - 1155 PACIFIC AVE

DESIGNED BY: C.W.
CHECKED BY: G.K., R.W.

DRAWN BY: C.W.
APPROVED BY: J.T.S.

HOR. SCALE: 1 : 250
VERTICAL: 1 : 10
DATE: 2025/03/04

THE CITY OF WINNIPEG
PUBLIC WORKS DEPARTMENT

RIVERTON AVENUE
FROM STRADACONA STREET TO ALLAN STREET
ASPHALT PAVEMENT RECONSTRUCTION AND RESURFACING
FROM STA. 2+20 TO STA. 2+97

CITY DRAWING NUMBER SE-25-416
SHEET 17 OF 23
2